

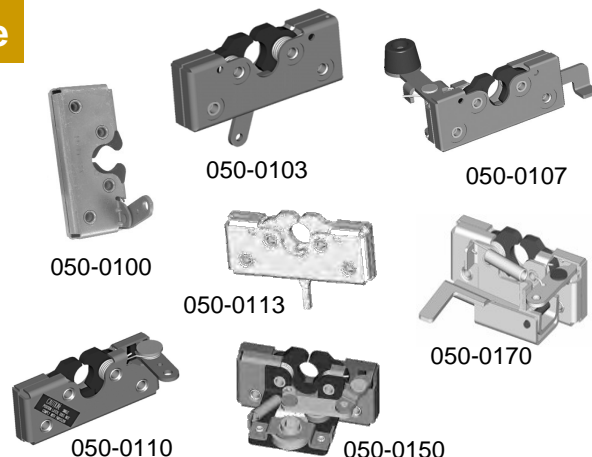
# Table of Contents

## Latches

## Page

### Two-Rotor

050-0100 Two-Rotor Latch .....	10
050-0103 Two Rotor Latch 2-Position Intertrip .....	11
050-0107 Two-Rotor Latch With Coaxial Trip .....	11
050-0110 Two-Rotor Single-Position Latch .....	11
050-0113 Two-Rotor Latch Single Position Intertrip .....	11
050-0150 Two-Rotor Latch & Release Linkage .....	12
050-0170 Two-Rotor Latch With Bellcrank Linkage .....	13



### Single-Rotor

050-0200 Slimline Rotary Latch .....	14
050-0204 Slimline Latch With Inline Trip Lever .....	15
050-0210 Slimline Rotary Latch Single-Position .....	15
050-0250 Single Rotor Latch & Linkage Assembly .....	16
050-0275 Slimline Cargo Latch .....	17
050-0300 Single Rotor Latch .....	18
050-0400 Floating Striker Single Rotor Latch .....	19
050-0410 Floating Striker Single Position Rotor Latch .....	20
050-0500 Single Rotor Mini-Latch .....	21
050-0600 Single Rotor Compartment Latch .....	22
050-0700 12mm Single Rotor Latch .....	23
050-0710 Direct Push Button/Remote Inside Release .....	24
050-0750 Remote Exterior/On-Latch Inside Release Lever .....	24
050-0760 Remote Exterior/Remote Inside Release .....	24
050-0810 Single Rotor Latch Logic .....	25
050-0850 TriGuard Heavy Duty Latch Module With Slam Cam Option .....	26
050-1100 6mm Single Rotor Latch .....	27
050-1200 Single Rotor Panel Latch .....	28
050-1600 TriGuard Heavy Duty Single Rotor Latch .....	29



### Sliding Bolt

060-0100 Plunger Bolt .....	30
060-0500 Plunger Bolt .....	31
060-0900 Recessed Mount Plunger Bolt .....	32
060-0901 Low Profile Plunger Bolt .....	33
060-1200 RV Screen Door Latch .....	34

### Dead Bolt

060-1300 Flush Mount Security Lock .....	35
------------------------------------------	----

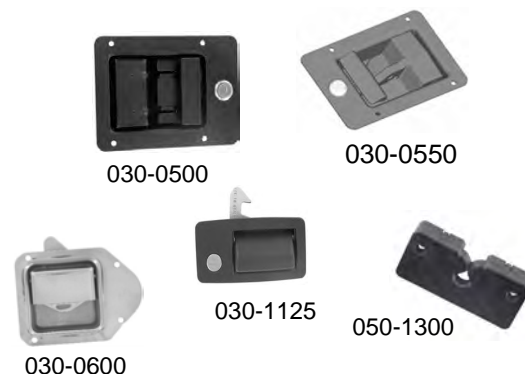
# Table of Contents

## Latches

## Page

### Slam Action (hook, pivoting & rotating catch)

030-0500 Pivoting Catch Compartment Latch .....	36
030-0550 Heavy Duty Pivoting Catch Compartment Latch .....	37
030-0600 Rotating Catch Compartment Latch .....	38
030-0625 2-Point Rotating Catch Compartment Latch .....	38
030-1125 Paddle Handle With Hook.....	39
050-1300 Plastic Slam Latch .....	40

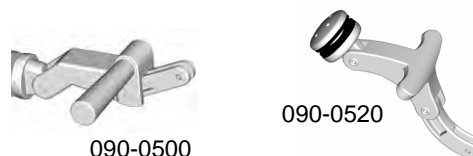


### Compression

080-0200 Lever Style Compression Latch .....	41
080-0400 CompOne™ Compression Latch .....	42

### Over-Center

090-0500 Window Hold-Open .....	43
090-0520 Window Hold-Open .....	43



### Pin Type

130-0100 Dual Release Door Hold-Open .....	44
130-0110 Single Release Door Hold-Open .....	45



## Handles

## Page

### Paddle

030-0100 Single Rotor Compartment Latch .....	46
030-0150 Heavy Duty Compartment Latch.....	47
030-0175 Stamped Steel Compartment Latch .....	48
030-0185 Stamped Steel 2-Point Paddle Handle .....	49
030-0200 Paddle Handle .....	50
030-0250 Paddle Handle With Inside Release Lever .....	50
030-0800 Flush Mounted Paddle Handle .....	51
030-0825 Flush Mounted Paddle Handle With Inside Release .....	52
030-0850 Flush Mounted Paddle Handle .....	53
030-0860 Flush Mounted Paddle Handle With Inside Lock Knob .....	54
030-0875 Free-Float Flush Mounted Paddle Handle .....	55
030-0900 Motor Home Entrance Door Hardware With Dead Bolt .....	56
030-1000 Motor Home Entrance Door Hardware .....	57
030-1050 Motor Home Entrance Door Hardware With Dead Bolt .....	57
030-1100 2-Point Paddle Handle .....	58
030-1125 Paddle Handle With Hook.....	59

# 050-0100 Two-Rotor Latch

This versatile two-rotor latch is designed for medium to heavy-duty applications for on or off-highway entrance doors, compartments and access panels. It features a variety of trip lever and mounting axles for ease of mounting and applications and is FMVSS 206 compliant.

- Door thicknesses of 1-7/8" (47.6mm) or greater
- Door weights of 50-200 lbs (23-91 kg)
- Door seal pressures of 50-150 lbs (23-68 kg) (suggested for best results)

## AVAILABLE:

- In left or right hand configurations (right hand shown)
- With (4) 1/4-20 UNC or M6 X 1 threaded axles
- With trip lever options
- Straddle mount option

## INSTALLATION:

- Four 1/4-20 UNC grade 5 or M6 X 1 class 8.8 or better fasteners are required (not included).
- Tighten to the fastener manufacturers' recommended torque value, however, do not exceed 120 in-lbs (13.3 N-m)
- Fastener mounting holes diameter should not exceed .281" (7.1mm)

## FINISH:

- Zinc plated, clear chromate steel components



## MATERIAL:

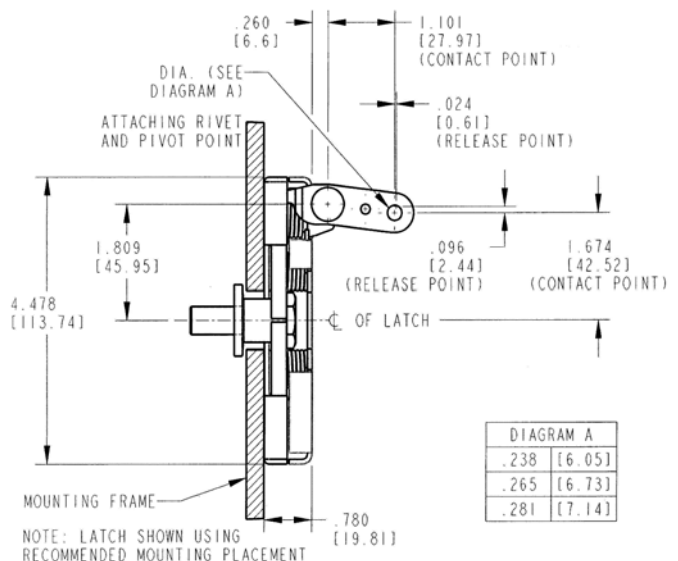
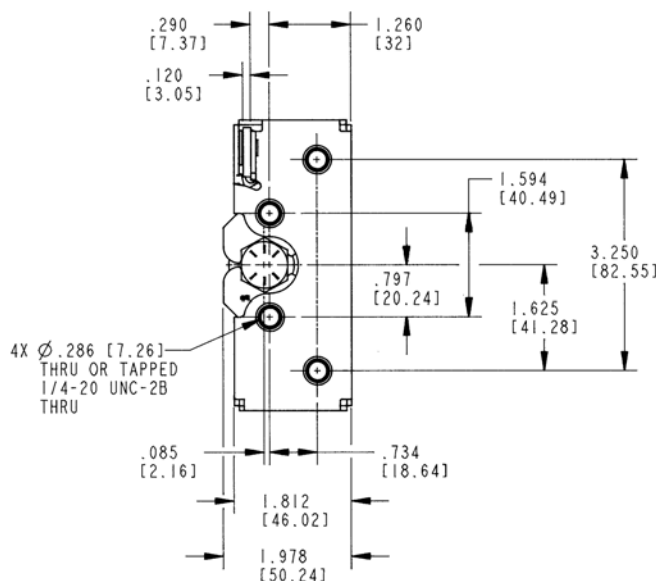
- Internal latch components: heat treated, smooth edge stamped steel
- Case halves: high strength steel
- Springs: non-corrosive stainless steel

## INTERNAL LUBRICATION

- Oven-cured dry lubricant is applied at factory on all critical moving parts

NOTE: Two position, double rotor latches comply with FMVSS 206 in primary and secondary latching positions when tested with approved TriMark FMVSS 206 compliant striker bolts in accordance with SAE J839.

For more information visit  
[www.trimarkcorp.com](http://www.trimarkcorp.com)



# Other 050-0100 Two-Rotor Latches

## DESIGNED FOR:

- Medium to heavy weight doors for on or off-highway applications
- Applications where it is desirable to have the release mechanism in-line with the latch (050-0103 Two-Rotor Latch 2-Position Intertrip)
- Applications where it is desirable to provide additional support to the trip lever (050-0107 Two-Rotor Latch With Coaxial Trip)
- Applications where it is desirable to have a single position rotary latch (050-0110 Two-Rotor 1-Position Latch)
- Door thicknesses of 1-7/8" or greater (47.6mm)
- Door weights of 50-200 lbs. (23-91kg)
- Door seal pressures of 50-150 lbs. (23-68kg) (suggested for best results)

## AVAILABLE:

- In left or right hand configurations
- With (4) 1/4-20 UNC, M6 X 1 threaded axles or .286" (7.3mm) diameter "thru" axles
- With trip lever options
- With a torsion return spring (050-0107)
- Straddle mount option (050-0110)

## FINISH:

- Zinc plated, clear chromate steel components

## MATERIAL:

- Internal latch components: heat treated, smooth edge stamped steel
- Case halves: high strength steel
- Springs: non-corrosive stainless steel

## INTERNAL LUBRICATION:

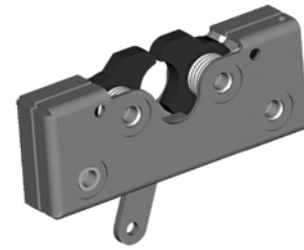
- Oven-cured dry lubricant is applied at factory on all critical moving parts

## INSTALLATION:

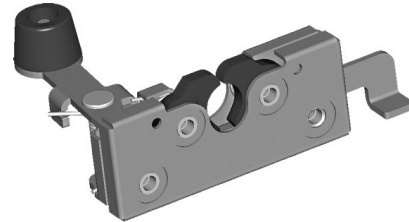
- Four 1/4-20 UNC grade 5 or M6 X 1 class 8.8 or better fasteners are required (not included)
- Tighten to the fastener manufacturers' recommended torque value, however, do not exceed 120 in-lbs. (13.3 N-m)
- Fastener mounting holes diameter should not exceed .281 (7.1 mm)

**CAUTION:** Single position, double rotor latches do not comply with FMVSS 206 requirements.

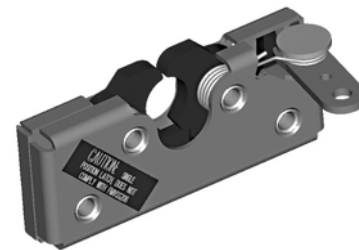
Latch with 2 position rotors complies with FMVSS 206 in primary and secondary latching positions when tested with approved TriMark FMVSS 206 compliant striker bolts in accordance with SAE J839



**050-0103 Two-Rotor Latch 2-Position Intertrip**



**050-0107 Two-Rotor Latch With Coaxial Trip**



**050-0110 Two-Rotor Single-Position Latch**



**050-0113 Two-Rotor Latch Single Position Intertrip**

# 050-0150 Two-Rotor Latch & Release Linkage

This two-rotor latch is designed for medium to heavy-duty applications for off-highway entrance doors. It features an integrated linkage that allows for direct L-handle actuation and provides for ease of mounting and applications.

## DESIGNED FOR:

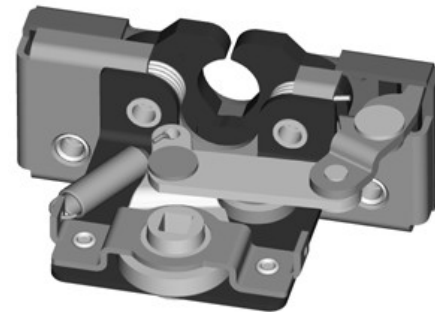
- Door thicknesses of 1-7/8" or greater
- Door weights of 50-200 lbs.
- Door seal pressures of 50-150 lbs. (suggested for best results)

## AVAILABLE:

- In left or right hand configurations (right hand shown)
- With drive bar receiver parallel to striker bolt or rotated in 15° increments (as illustrated)

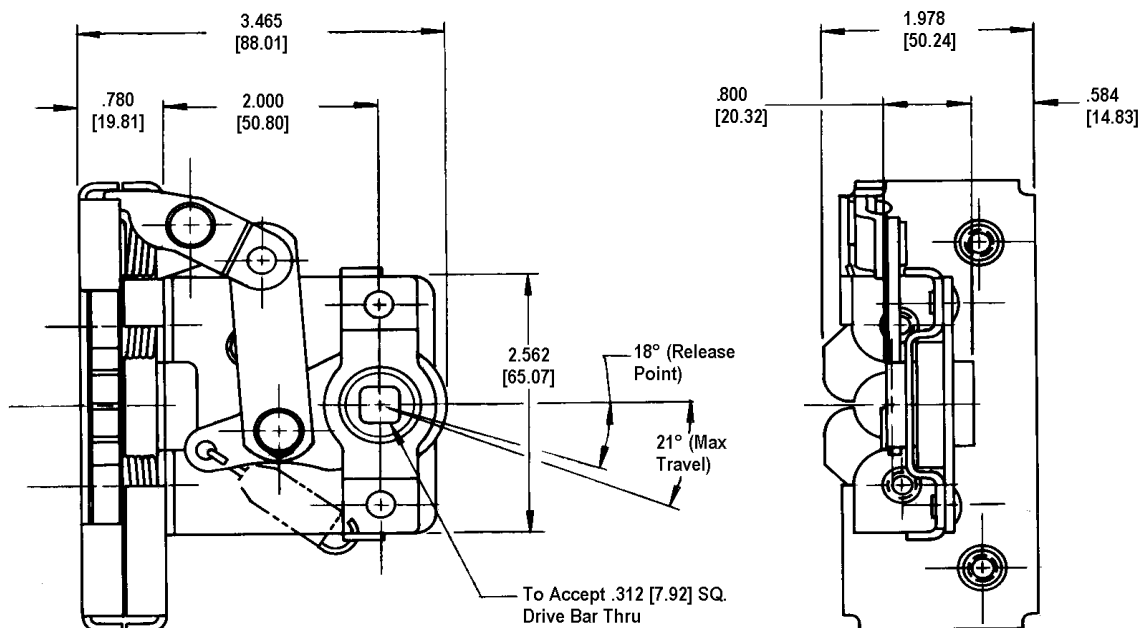
## INSTALLATION:

- Four 1/4-20 UNC grade 5 mounting fasteners (not included). Tighten to the fastener manufacturers' recommended torque value, however, do not exceed 120 in-lbs
- Maximum .312 (7.9mm) diameter mounting holes



**CAUTION:** Linkage does not comply with locking requirements of FMVSS 206.

**NOTE:** Latch complies with FMVSS 206 in primary and secondary latching positions when tested with approved TriMark striker bolts in accordance with SAE J839.





# 050-0170 Two-Rotor Latch With Bellcrank Linkage

This two-rotor latch is designed for medium to heavy-duty applications for off highway entrance doors where push button handle actuation is desired. It features an integrated linkage that allows for direct push button actuation and direct inside release and provides for ease of mounting and applications.

## DESIGNED FOR:

- Door thicknesses of 1-7/8" (47.6mm) or greater
- Door weights of 50-200 lbs. (23-91 kg)
- Door seal pressures of 50-150 lbs. (23-68 kg) (suggested for best results)

## AVAILABLE:

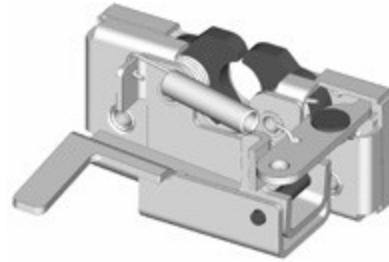
- In left or right hand configurations (left hand shown)
- With (4) 1/4-20 UNC or M6 X 1 threaded axles
- With inside release lever options and trip lever options

## INSTALLATION:

- Four 1/4-20 UNC grade 5 or M6 X 1 class 8.8 mounting fasteners (not included).
- Tighten to the fastener manufacturers' recommended torque value, however, do not exceed 120 in-lbs (13.3 N-m)
- Maximum .281 (7.1mm) diameter mounting holes

## FINISH:

- Zinc plated, clear chromate steel components



## MATERIAL:

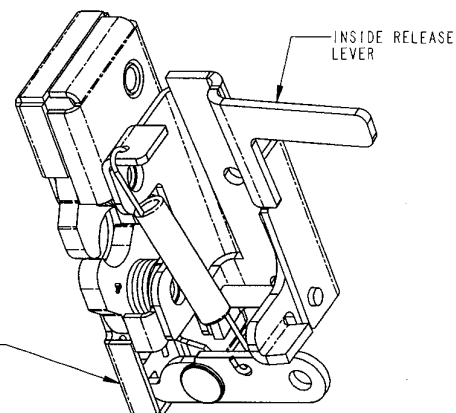
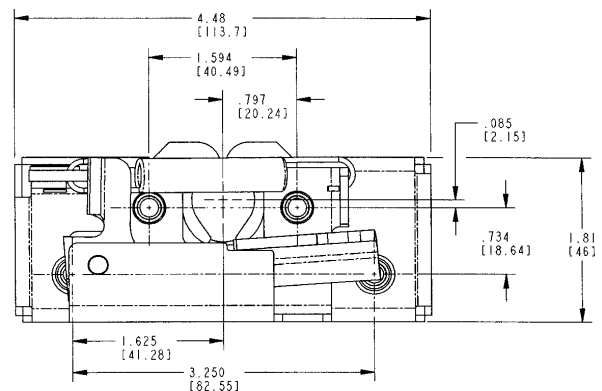
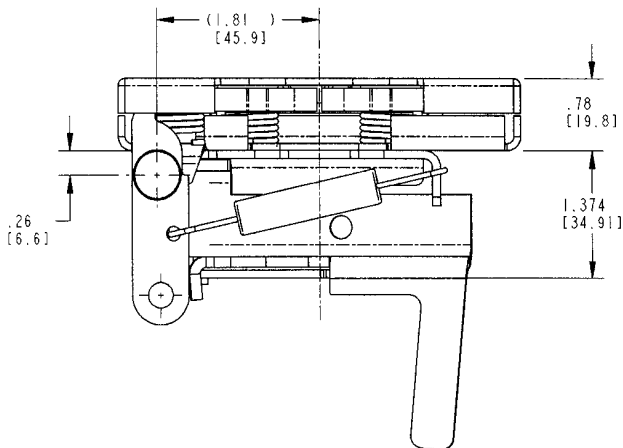
- Internal latch components: heat treated, smooth edge stamped steel
- Case halves: high strength steel
- Springs: non-corrosive stainless steel

## INTERNAL LUBRICATION:

- Oven-cured dry lubricant is applied at factory on all critical moving parts

**CAUTION:** Linkage does not comply with locking requirements of FMVSS 206.

**NOTE:** Latch complies with FMVSS 206 in primary and secondary latching positions when tested with approved TriMark striker bolts in accordance with SAE J839.



For more information visit  
[www.trimarkcorp.com](http://www.trimarkcorp.com)

050-0170 SERIES  
TWO-ROTOR LATCH  
WITH BELLCRANK  
LINKAGE

# 050-0200 Slimline Rotary Latch

This compact single rotor latch is designed for light to medium applications for on or off-highway entrance doors, compartments and access panels. It features a variety of trip levers and mounting axles for ease of mounting and applications and is FMVSS 206 compliant.

- Door weights up to 75 lbs. (37 kg)
- Door seal pressures of 20-25 lbs. (9-11 kg) recommended for best results (not to exceed 50 lbs. [23 kg])
- Visible surface installation or concealed installation

## AVAILABLE:

- Left or right hand configurations (left hand shown)
- With standard .265" (6.7mm) diameter "thru" axles as shown, 1/4-20 UNC threaded axles or M6 X 1.0 threaded axles

## FINISH:

- Zinc plated, clear chromate steel components
- Stainless steel

## MATERIAL:

- Internal latch components: heat treated smooth edge stamped steel
- Springs: non-corrosive stainless steel
- Case halves: high strength steel



## INSTALLATION:

- Three 1/4-20 UNC grade 5-type or M6 X 1 class 8.8 or better fasteners are recommended
- Vertical mounting with support ramp at top is required for proper alignment and subsequent engagement of locking pawl and striker bolt
- Tighten to the fastener manufacturers' recommended torque value, however, do not exceed 120 in-lbs. (13.3 N-m)

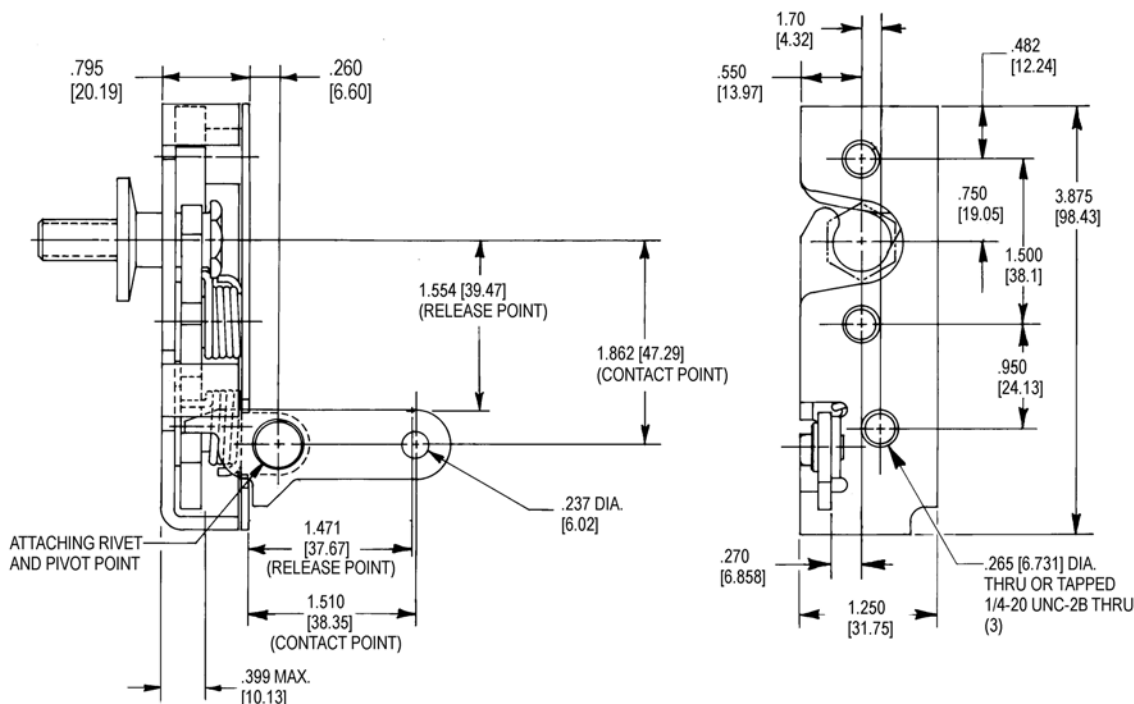
## INTERNAL LUBRICATION:

- Oven-cured dry lubricant is applied on all critical moving parts

**NOTE:** Two position rotor latches comply with FMVSS 206 in primary and secondary latching positions when tested with approved TriMark striker bolts in accordance with SAE J839.

**U.S. Patent No. 7,156,430 and**

**U.S. Patent No. 7,320,488**



# Other 050-0200 Slimline Latches

## DESIGNED FOR:

- Thinner, light or medium weight door applications requiring resistance to dust and vibration
- Door weights up to 75 lbs. (34 kg)
- Door seal pressures of 20-25 lbs. (9-11 kg) recommended for best results. Not to exceed 50 lbs. (23 kg)
- Visible surface installation or concealed installation
- Applications where it is desirable to have the release mechanism in line with the latch (050-0204)
- Applications where it is desirable to have a single position rotor latch (050-0210)

## AVAILABLE:

- Left or right hand configurations
- With standard .265 (6.7mm) diameter "thru" axles as shown, 1/4-20 UNC threaded axles or M6 X 1.0 threaded axles

## FINISH:

- Zinc plated, clear chromate steel components

## MATERIAL:

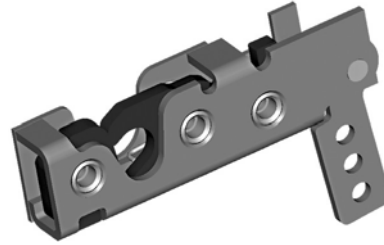
- Internal latch components: heat treated smooth edge stamped steel
- Springs: non-corrosive stainless steel
- Case halves: high strength steel

## INSTALLATION:

- Three 1/4-20 UNC grade 5-type or M6 X 1 class 8.8 or better fasteners are recommended
- Vertical mounting with support ramp at top is required for proper alignment and subsequent engagement of locking pawl and striker bolt
- Tighten to the fastener manufacturers' recommended torque value, however, do not exceed 120 in-lbs. (13.3 N-m)

## INTERNAL LUBRICATION:

- Oven-cured dry lubricant is applied on all critical moving parts



**050-0204 Slimline Latch With Inline Trip Lever**



**050-0210 Slimline Rotary Latch With Single Position**

**CAUTION:** Single position rotary latches do not comply with FMVSS 206 requirements

**NOTE:** Two position rotary latches complies with FMVSS 206 in primary and secondary latching positions when tested with approved TriMark striker bolts in accordance with SAE J839.

For more information visit  
[www.trimarkcorp.com](http://www.trimarkcorp.com)



# 050-0250 Single Rotor Latch & Linkage Assembly

This latch and linkage system is intended for occupant or exit/entry doors for recreational vehicles including motor homes and travel trailers and specialty vehicles including ambulance, fire/rescue and off-highway vehicles (light duty) that require compliance to FMVSS 206 standards. The flexible design allows for internal or external door mounting and provides automotive logic function with remote activating handles.

- Door weights up to 75 lbs. (34 kg)
- Door seal pressures of 20-25 lbs. (9-11 kg) recommended for best results (not to exceed 50 lbs. [23 kg])

## AVAILABLE:

- Right or left hand configurations (left hand shown)
- Spacer plate is available to facilitate interior door mounting
- Improved versions are available with increased mechanical advantage that reduce the release efforts at the exterior and interior handles. These versions are retrofits with previous part numbers but may require connecting rod revisions, due to the increased length of the linkage and slightly revised rod connections points.

## FINISH:

- Zinc plated clear chromate steel components

## MATERIAL:

- Internal latch components: heat treated, smooth edge stamped steel
- Springs: non-corrosive stainless steel
- Case halves: high strength steel



Latch shown with optional state sensing. State sensing option adds an electrical switch to the latch to sense the door open and door closed state.

## INSTALLATION:

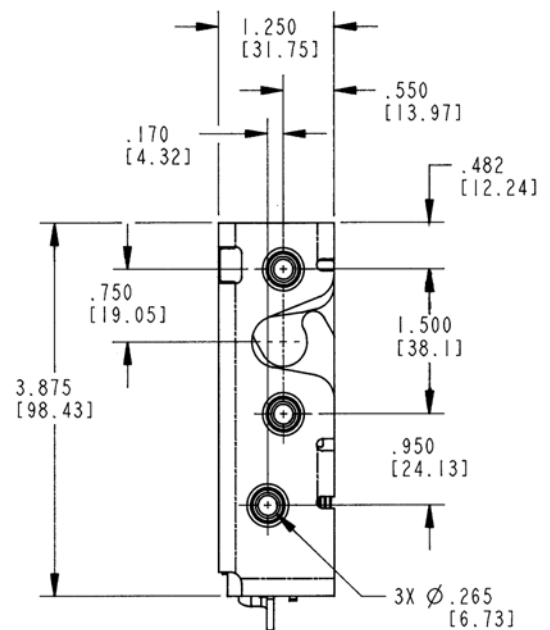
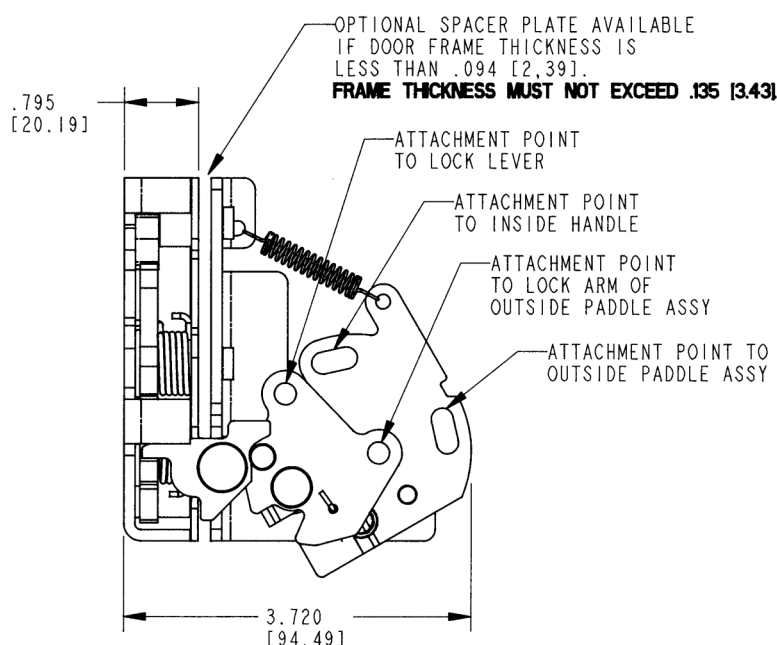
- Can be mounted inside or outside of door edge
- Three 1/4-20 UNC grade 5-type or better fasteners are recommended (not included). Tighten to the manufacturers' recommended torque value, however, do not exceed 120 in-lbs (13.3 N-m)

## INTERNAL LUBRICATION:

- Oven-cured dry lubricant is applied on all critical moving parts

**NOTE:** Latch and linkage complies with FMVSS 206 when tested with approved TriMark Striker Bolts in accordance with SAE J839.

**U.S. Patent No. 7,156,430 and  
U.S. Patent No. 7,320,488**



# 050-0275 Slimline Cargo Latch

This compact single rotor latch is designated for light duty applications for on-road utility cargo doors. This latch is not designed to comply with FMVSS 206 requirements.

- Thinner, light weight door applications
- Door weights up to 75 lbs. (34 kg)
- Door seal pressures of 20-25 lbs. (9-11 kg) recommended for best results
- Non FMVSS 206 applications

## FEATURES/BENEFITS:

- Compact size allows for more head clearance in a cargo door application
- The case design allows the latch to be mounted closer to the door top and bottom edge for non-protruding striker details
- Allows for use with a hoop type striker (not available at this time — please inquire)

## AVAILABLE:

- Left or right hand configurations (left hand shown)
- With 1/4-20 axles as shown or (optional) .265 "thru" axles or M6 X 1.0 threaded axles
- Other actuation levers are available — please inquire

## FINISH:

- Zinc plated, clear chromate steel components
- Stainless steel springs



## FINISH:

- Zinc plated, clear chromate steel components
- Stainless steel springs

## INSTALLATION:

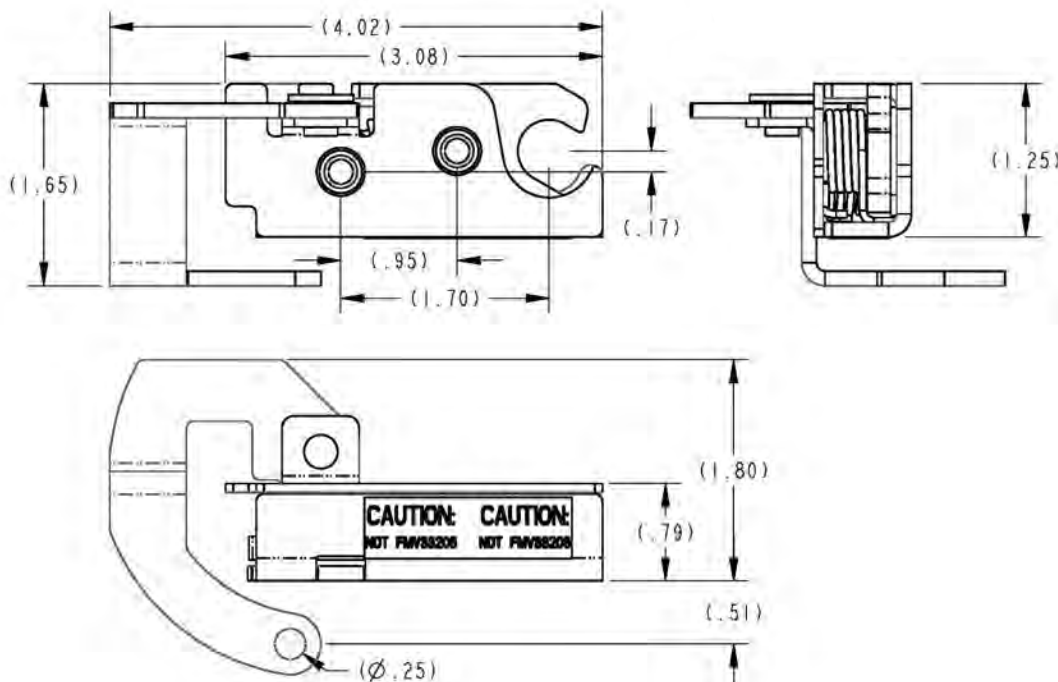
- Two 1/4-20 UNC or M6 X 1 fasteners are recommended
- Tighten to the fastener manufacturers' recommended torque value, however, do not exceed 120 in-lbs. (13.3 N-m)

## INTERNAL LUBRICATION:

- Oven-cured dry lubricant is applied on all critical moving parts

**CAUTION:** Latch does not comply with FMVSS 206 requirements

For more information visit  
[www.trimarkcorp.com](http://www.trimarkcorp.com)



# 050-0300 Single Rotor Latch

This compact single rotor latch is designed for light to medium applications for on or off-highway compartment doors and access panels. It features a single or two-position compact rotary and is available in a variety of trip levers and mounting axles for ease of mounting applications

- Most storage, compartment and access doors
- Windows
- Any application where finger or remote release is desired

## **MATERIAL:**

- Strike, rotor and rotor catch: heat treated, smooth edge stamped steel
- Case halves: zinc plated, mild steel components

## **AVAILABLE:**

- Latch is non-handed, but trip lever handing is available
- With (2) 1/4-20 UNC or M6 X 1.0 threaded axles or .265 (6.7mm) diameter "thru" axles



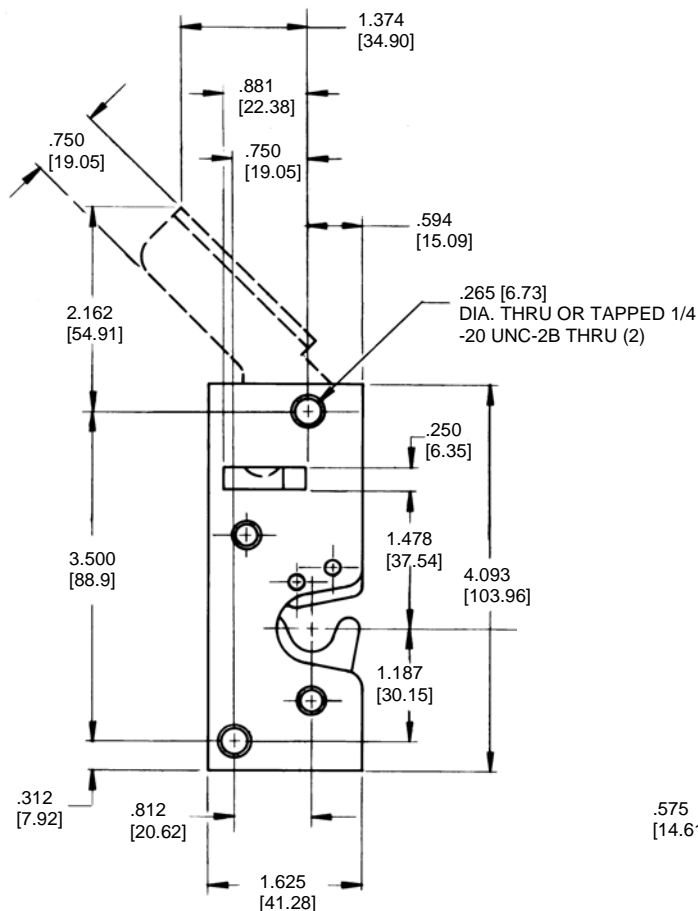
## **INSTALLATION:**

- Two 1/4-20 UNC grade 5-type or M6 X 1.0 class 8.8 or better fasteners are required fasteners (not included)
- Tighten to fastener manufacturers' recommended torque value, however, do not exceed 120 in-lbs. (13.3 N-m)

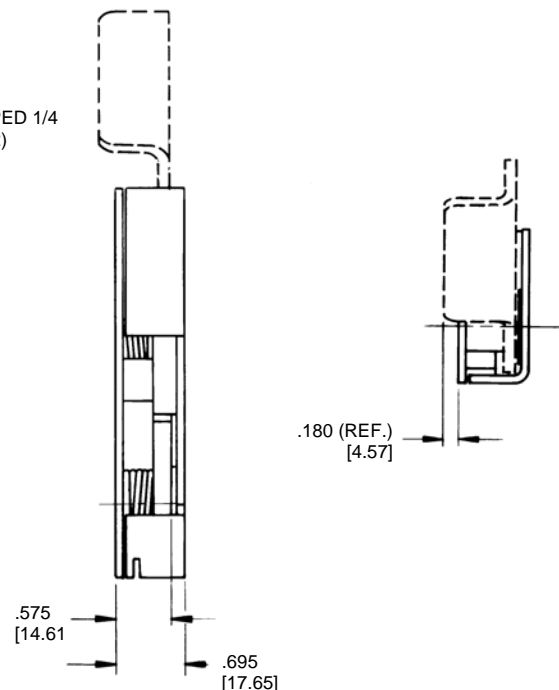
## **INTERNAL LUBRICATION:**

- Oven-cured dry lubricant is applied to catch and rotor

**CAUTION:** LLatch does not meet FMVSS 206 load requirements.



For more information visit  
[www.trimarkcorp.com](http://www.trimarkcorp.com)



# 050-0400 Floating Striker Single Rotor Latch

This robust single rotor latch is designed for medium to heavy-duty applications for on or off highway entrance doors, compartments and access panels. It features a vertical clearance rotor for high vibration applications and is available in a variety of trip levers and mounting axles for ease of mounting and applications and is FMVSS 206 compliant.

- Door thicknesses of 1-7/8" (47.6mm) or greater
- Door weights of 50-200 lbs. (23-91 kg)
- Door seal pressures of up to 150 lbs. (68 kg) (< 50 lbs. (23 kg) suggested for best results)
- Visible surface installation or concealed inside installation

## FEATURES/BENEFITS:

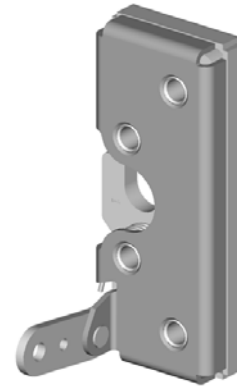
- Allows for  $\pm .143$  (3.63) strike travel from .789
- Ideal for applications with high vibration loading and where controlled travel between the latch and strike is characteristic of the application
- Single-position rotary style latching

## FINISH:

- Zinc plated, clear chromate steel components

## MATERIAL:

- Internal latch components: heat treated, smooth edge stamped steel
- Case halves: high strength steel
- Springs: non-corrosive stainless steel



## INSTALLATION:

- Four 1/4-20 UNC grade 5 or M6 X 1 class 8.8-type fasteners are required (not included)
- Tighten to the fastener manufacturers' recommended torque value, however, do not exceed 120 in-lbs. (13 N-m)
- Fastener mounting holes diameter should not exceed .281 (7.1mm)

## AVAILABLE:

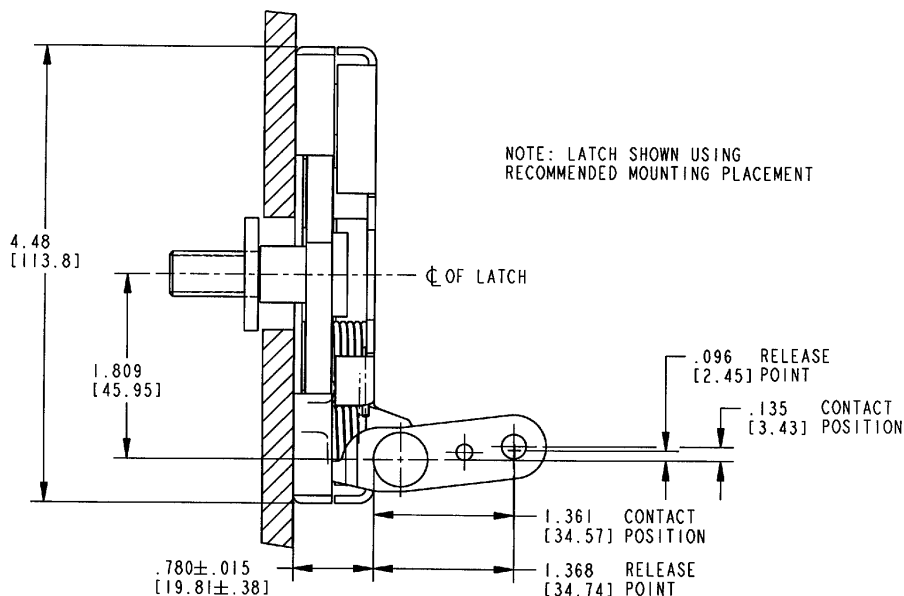
- In left or right hand configurations (right hand shown)
- With (4) 1/4-20 UNC, M6 X 1 threaded axles or .286 (7.3mm) through axles
- With trip lever options

## INTERNAL LUBRICATION:

- Oven-cured dry lubricant is applied at factory on all critical moving parts

**NOTE:** Complies with FMVSS 206 in primary and secondary latching positions when tested with approved TriMark FMVSS 206 compliant striker bolts in accordance with SAE J839.

For more information visit  
[www.trimarkcorp.com](http://www.trimarkcorp.com)



# 050-0410 Floating Striker Single Rotor Latch-Single Position

This single rotor latch is a sub-platform to the proven 050-0400 series latch and is designed for medium to heavy-duty applications for on or off-highway compartments and access panels where it is desirable to have a single position latch

- Applications requiring resistance to vibration
- Door thicknesses of 1-7/8" or greater
- Door weights of 50-200 lbs.
- Door seal pressures of up to 150 lbs. (< 50 lbs. suggested for best results)
- Visible surface installation or concealed inside installation

## FEATURES/BENEFITS:

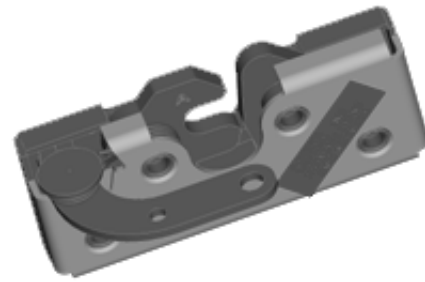
- Allows for  $\pm .143$  (3.63) strike travel from .789 (19.91) locating dimension
- Ideal for applications with high vibration loading and where controlled travel between the latch and strike is characteristic of the application
- Single position rotary style latching action

## FINISH:

- Zinc plated, clear chromate steel components

## MATERIAL:

- Internal latch components: heat treated, smooth edge stamped steel
- Case halves: high strength steel
- Springs: non-corrosive stainless steel



## INSTALLATION:

- Four 1/4-20 UNC grade 5 or M6 X 1 class 8.8-type fasteners are required (not included).
- Tighten to the fastener manufacturers' recommended torque value, however, do not exceed 120 in-lbs. (13 N-m)
- Fastener mounting holes diameter should not exceed .281 (7.1 mm)

## AVAILABLE:

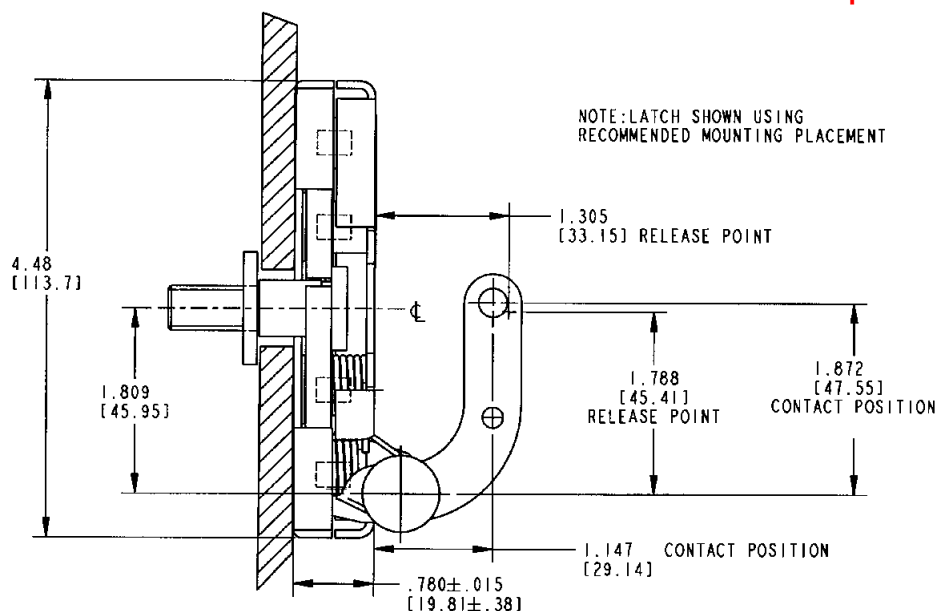
- In left or right hand configurations (right hand shown)
- With (4) 1/4-20 UNC, M6 x 1 threaded axles or .286 through axles
- With trip lever options

## INTERNAL LUBRICATION:

- Oven-cured dry lubricant is applied at factory on all critical moving parts

**CAUTION:** Latch does not comply with FMVSS 206 requirements.

For more information visit  
[www.trimarkcorp.com](http://www.trimarkcorp.com)





# 050-0500 Single Rotor Mini-Latch

Designed for small compartment and access doors where low cost slam action latching is desired. It features a single or two-position compact rotary and is available in a variety of trip levers and mounting axles for ease of mounting and applications

- Pickup box lids and cross bed tool boxes
- Light weight door applications
- RV baggage doors
- Door closing forces of 15-20 lbs. (6.8-9 kg) recommended for best results (not to exceed 50 lbs. [23 kg])
- Release efforts are approximately proportional to door closing forces

## FEATURES/BENEFITS:

- Compact size
- Low cost
- Single position rotary style latching action
- Double position also available

## AVAILABLE:

- Right and left hand configurations (left hand shown)
- With 1/4-20 UNC threaded axles
- Base mount
- With rod collars attached

## MATERIAL:

- Internal latch components and case halves: high-strength steel
- Springs: non-corrosive stainless steel



## FINISH:

- Zinc plated, clear chromate
- Stainless steel

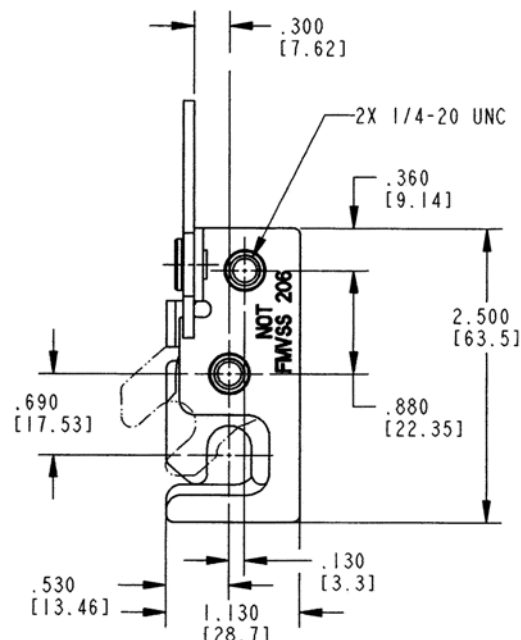
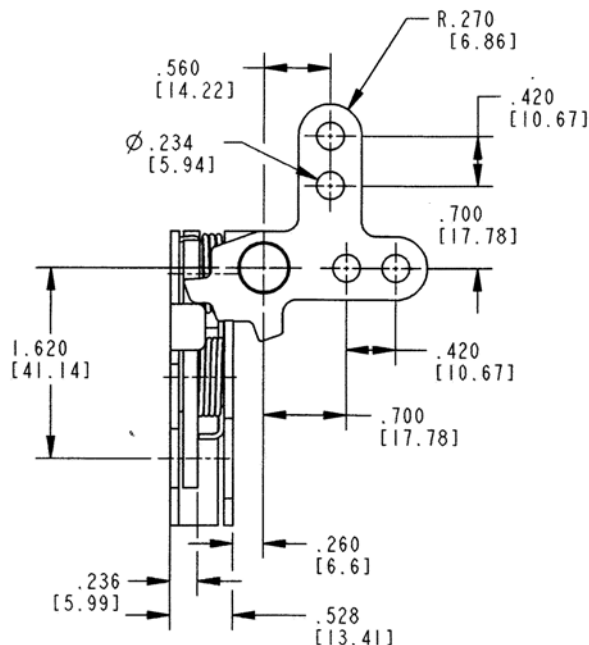
## INSTALLATION:

- Two 1/4-20 UNC mounting fasteners (not included)
- Custom mounting brackets and release levers upon request
- Tighten to the manufacturers' recommended torque value, however, do not exceed 100 in-lbs. (11.2 N-m)

**NOTE:** Rod collars are not intended or recommended for use in applications that require FMVSS 206 compliance or applications that have heavy or extreme striker bolt loads (> 25 lbs. / 11 kg) and/or high to extreme usage (> 100,000 door cycles/life).

**CAUTION:** Latch does not comply with FMVSS 206 requirements.

For more information visit  
[www.trimarkcorp.com](http://www.trimarkcorp.com)



# 050-0600 Single Rotor Compartment Latch

This new latch is intended for storage and compartment doors for off-road vehicles including agricultural and construction equipment. The robust construction and compact size at a very cost effective price make it a great choice for light to medium duty compartment door applications.

- Access panels and hoods for off-highway vehicle applications
- Applications where it is desirable to have a single rotor latch that offers robust construction and compact size for a very cost effective price

## FEATURES/BENEFITS:

- Compact size
- Use with 12mm diameter striker or standard bar stock
- Mounts with (2) M8 X 1.25 fasteners (not included)
- Threaded axle version provides ease of installation



## AVAILABLE:

- Right or left hand configurations (left hand shown)
- Single or two position rotary style latching function
- Several standard release actuators are available

## INSTALLATION:

- Installed with (2) M8 X 1.25 bolts (not included)
- Tighten to the manufacturers' recommended torque value, however, do not exceed 22.2 N-m (180 in-lbs)

## FINISH:

- Zinc plated, clear chromate steel components

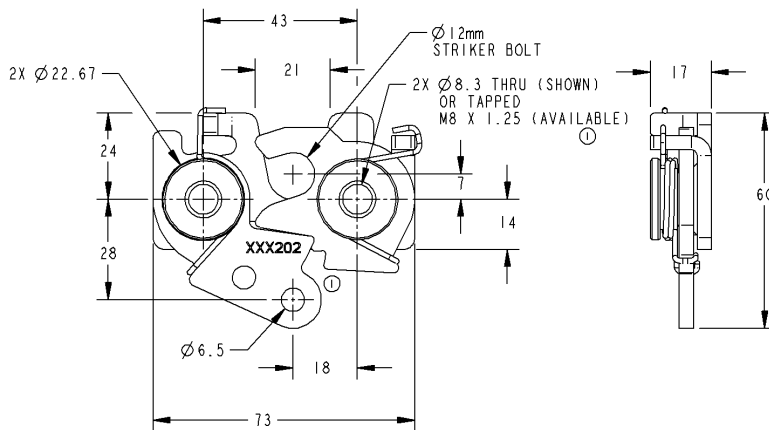
## MATERIAL:

- Case and actuator: high strength steel
- Springs: non-corrosive stainless steel

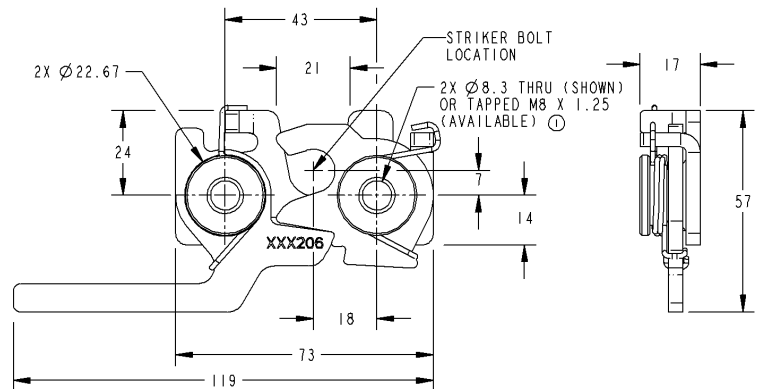
**CAUTION:** Latch does not comply with FMVSS 206 requirements

The following drawings show standard versions of the 050-0600 and do not depict all of the configurations available. Please refer to the website for additional information.

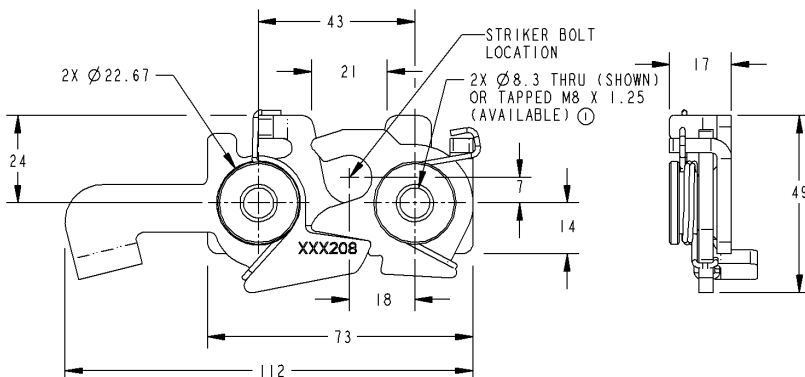
### Version A



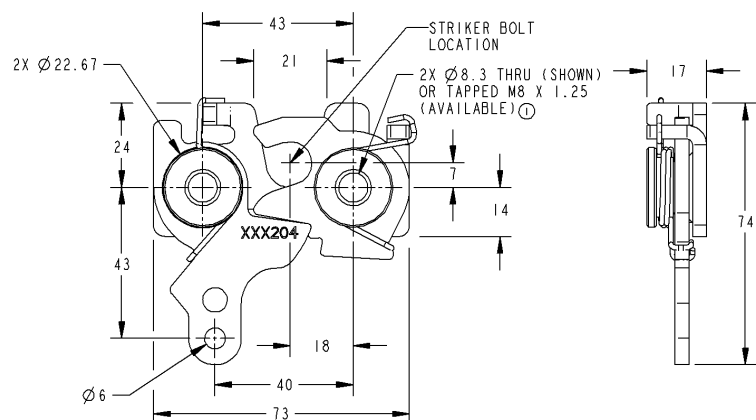
### Version C



### Version B



### Version D



# 050-0700 12mm Single Rotor Latch

This compact single rotor latch is designed for use on light to medium duty operator and compartment doors for on- or off-highway applications. There are a number of variants allowing it to interface with TriMark's range of external and internal methods of activation for application flexibility.

- Operator and compartment door applications for on and off-highway vehicles
- Light to medium duty doors up to 25 kg (55 lbs.) with door seal pressures no greater than 20 kg (44 lbs.)
- 12mm diameter striker bolt

## FEATURES/BENEFITS:

- Compact size and shape; allows maximum visibility and use of door space
- Four standard variants; provides application flexibility
- Black finish reduces the need for secondary painting or covers

## MATERIAL:

- Rotor: Heat treated steel
- Case halves: High strength steel
- Springs: Non-corrosive stainless steel
- Inside release knob: Black PVC plastic
- Push button bellcrank: Die cast zinc alloy

## FINISH:

- Zinc plated steel components with black chromate



## INSTALLATION:

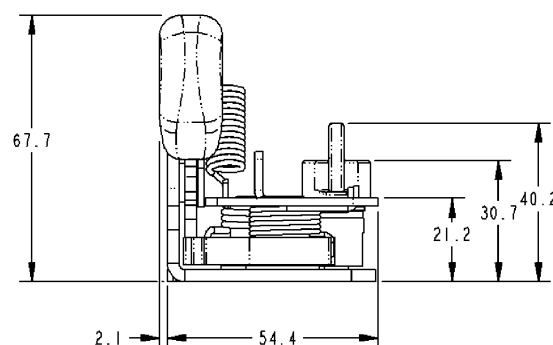
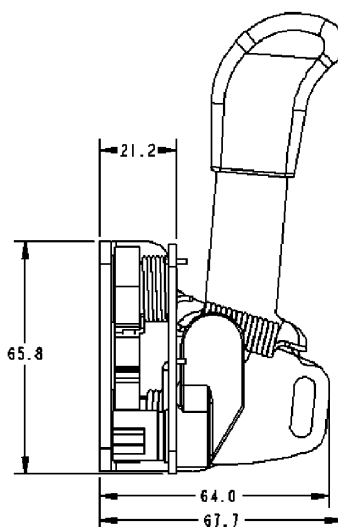
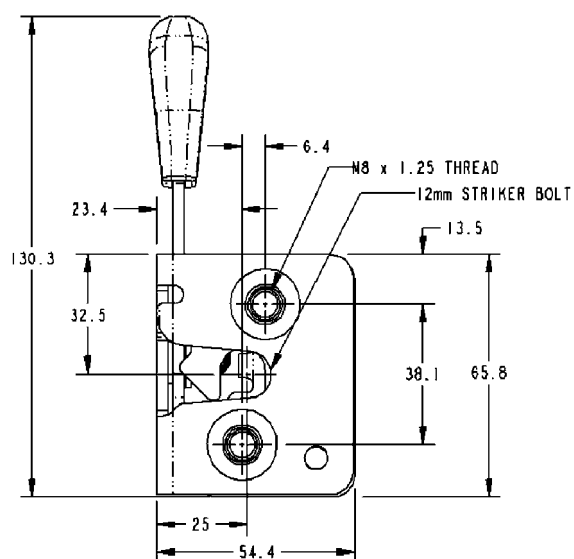
- M8 x 1.25 threaded axle; provides ease of installation (Tighten to the fastener manufacturer's recommended torque value)

## AVAILABLE:

- Versions are available to allow direct or remote actuation from exterior handles and interior release
- Standard left and right hand versions; allows use in either orientation (right hand shown)
- Standard M8 X 1.25 threaded axles as shown or 8.4mm diameter "thru" axles

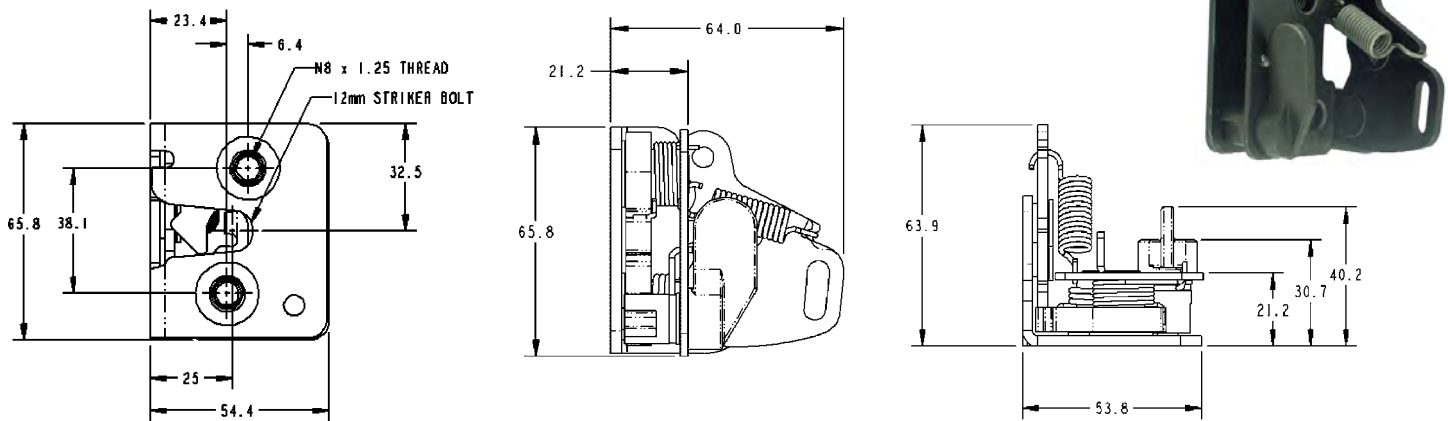
**CAUTION:** Latch does not comply with FMVSS 206 requirements

For more information visit  
[www.trimarkcorp.com](http://www.trimarkcorp.com)



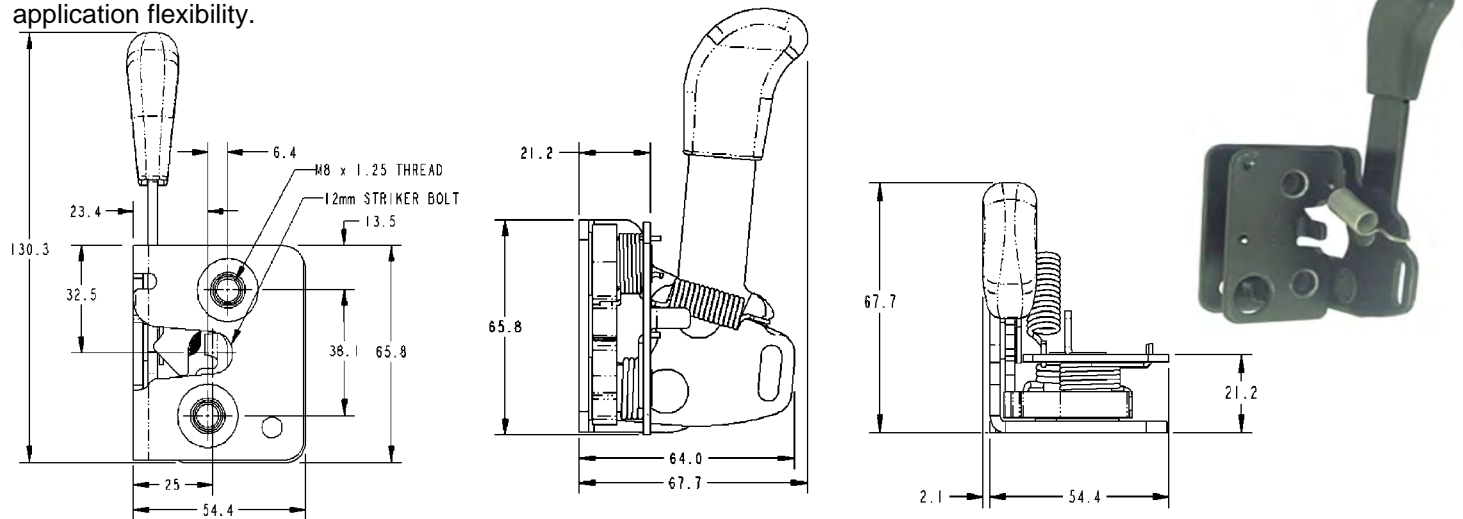
# 050-0710 Direct Push Button / Remote Inside Release

The 050-0710 version features an integrated bellcrank for direct push button handle release and a separate remote inside release for application flexibility.



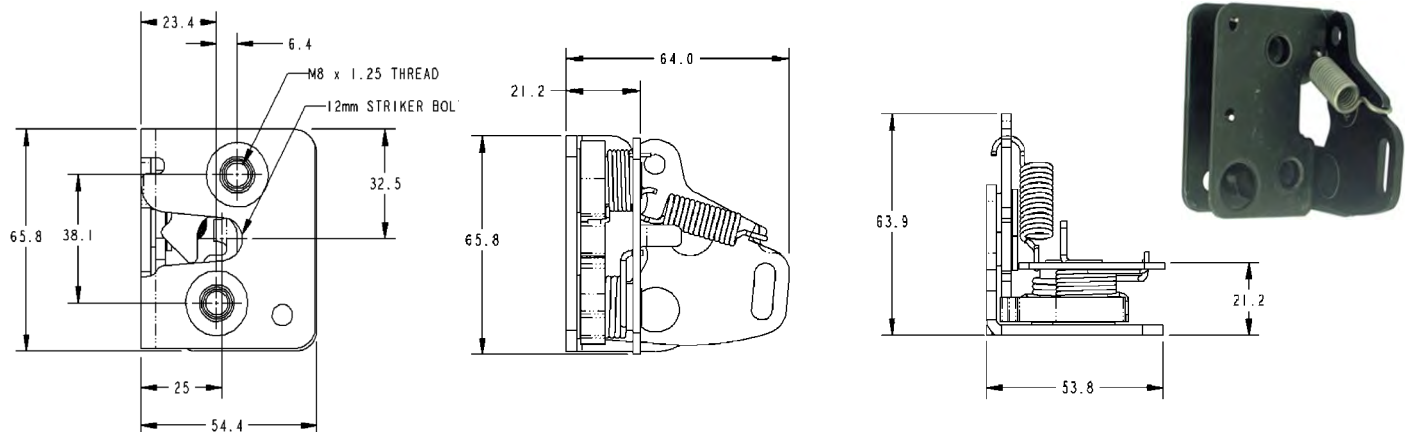
# 050-0750 Remote Exterior / On-Latch Inside Release

The 050-0750 version features an on-latch inside release lever with provision for remote exterior release for application flexibility.



# 050-0760 Remote Exterior / Remote Inside Release

The 050-0760 version features a single actuator that provides remote inside and exterior release for the ultimate in simplicity and application flexibility.



# 050-0810 Single Rotor Latch Logic

This new latch system is intended for occupant or exit/entry doors for specialty vehicles including ambulance, fire/rescue and off-highway vehicles (light duty) that require compliance to FMVSS 206 standards. The flexible design allows for internal or external door mounting and provides automotive logic function with remote activating handles.

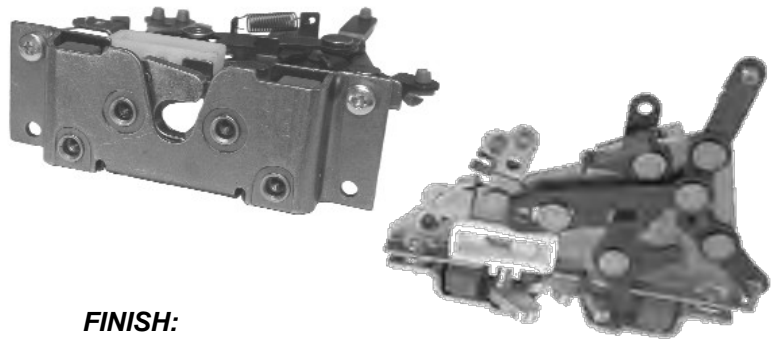
- Applications where it is desirable to have the ability to electronically lock the door
- Medium to heavy weight door applications
- Door weights up to 150 lbs. (68 kg) maximum
- Door seal pressures of 25-50 lbs. (11-23 kg) recommended for best results

## FEATURES/BENEFITS:

- Provides automotive locking logic function
- Mounts in doors requiring latch location remote from activating handles
- Latch and logic has a no lock-out detail that will not allow you to lock the door unless it is closed. This eliminates the possibility of inadvertently locking the keys in the vehicle.
- The logic provides an over-ride function that automatically unlocks the door when the inside door handle is operated. This feature provides egress without having to manually unlock the door before operating the handle.

## AVAILABLE:

- Right or left hand configurations (right hand shown)
- With (4) 1/4-20 UNC or M6 X 1 threaded axles
- Linkage rods available for your specific applications



## FINISH:

- Zinc plated clear chromate steel components
- Linkage components are Nitrotec® treated for wear resistance

## MATERIAL:

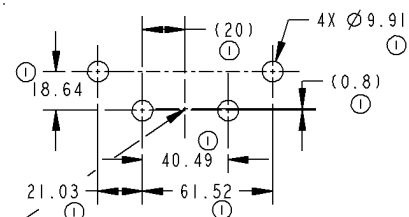
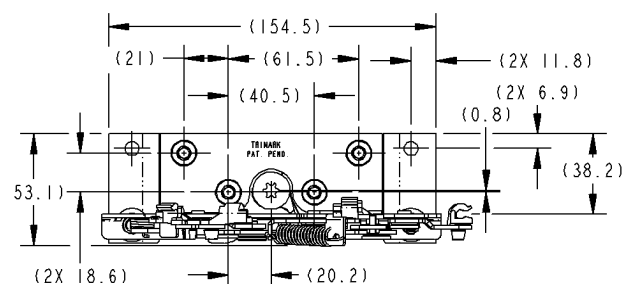
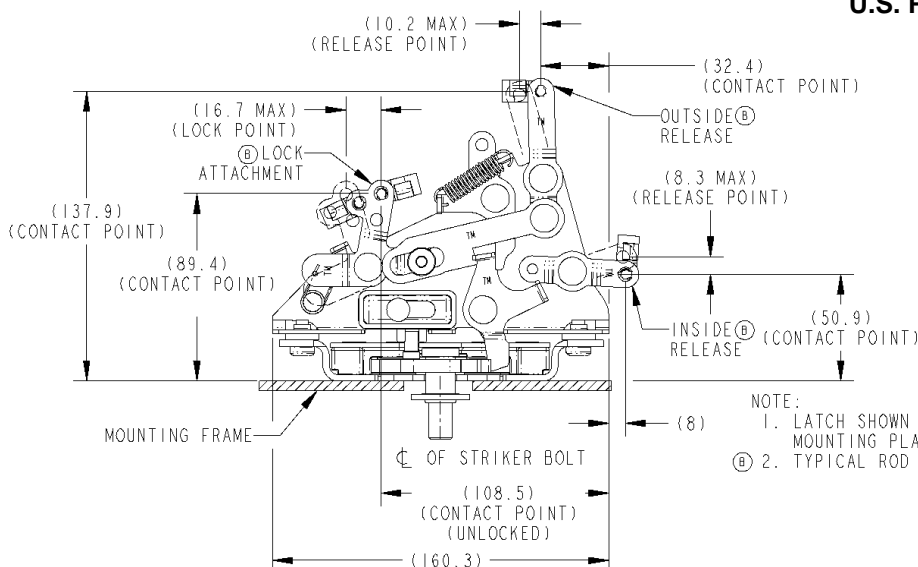
- Plastic encapsulated metal rotor and catch reduces friction and deadens the door closing sound
- Springs: non-corrosive stainless steel
- Case halves: high strength steel

## INSTALLATION:

- Can be mounted inside or outside of door edge
- Four 1/4-20 UNC grade 5 or M6 X 1 class 8.8 or better fasteners are recommended (not included)
- Tighten to the manufacturers' recommended torque value, however, do not exceed 72 in-lbs. (8 N-m)

**NOTE:** Latch and linkage complies with FMVSS 206 when tested with approved TriMark striker bolts in accordance with SAE J839.

**U.S. Patent No. 6,494,506 and  
U.S. Patent No. 6,695,361**



LOCATION OF STRIKER BOLT  
FOR CUSTOMER REFERENCE.



# 050-0850 TriGuard Heavy Duty Latch Module With Slam Cam

This heavy duty latch module is designed for medium to heavy-duty armored vehicle entrance and rear door applications. It features a proven single rotor latch design and high strength 8 gauge (4.2mm) front mounting plate with flange mounting

- Medium to heavy duty doors of 23-91 kg (50-200 lbs.) with door seal pressures of 23-60 kg (50-150 lbs.)

## FEATURES/BENEFITS:

- Heavy duty modular construction — survives in punishing environment
- Can be used on retrofit, up-armour applications or new surface mount vehicle construction
- Heavy duty latch/striker provides rotor/cam assist to heavy doors/armour, hinges and compensates for door sag

## AVAILABLE:

- Right or left hand configurations (right hand shown)
- Replaceable striker alignment lift blocks
- Custom configured release levers
- Striker with self-aligning "slam clam"

## FINISH:

- Zinc plated, clear chromate steel components



## MATERIAL:

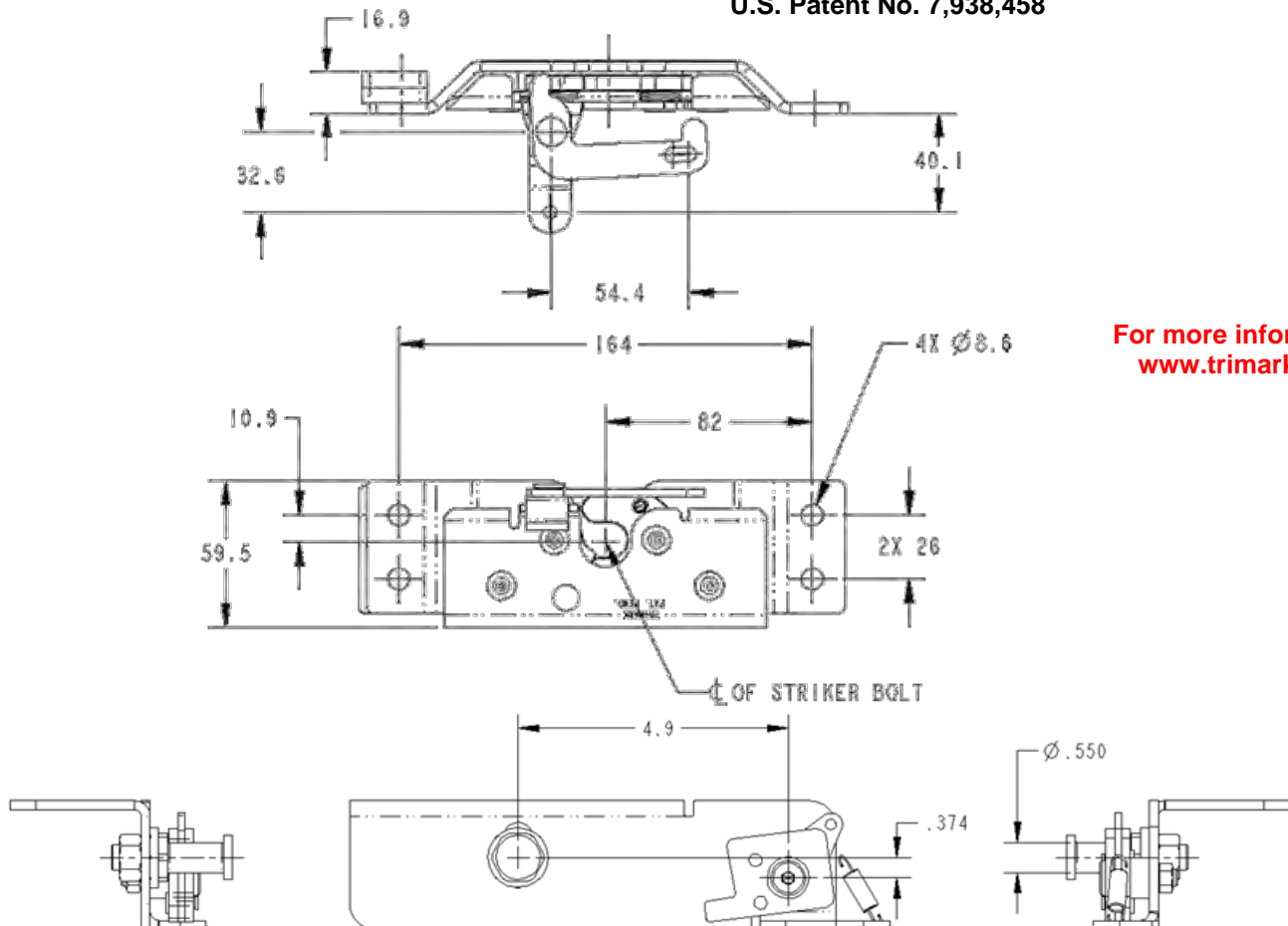
- Case halves are high strength steel
- Springs are non-corrosive stainless steel

## INSTALLATION:

- Four M8 X 1.25 class 8.8 or better fasteners are recommended (not included)
- Tighten to the manufacturers' recommended torque value

**NOTE:** Latch complies with FMVSS206 when tested with approved TriMark Striker Bolts in accordance with SAE J839

U.S. Patent No. 7,938,458



For more information visit  
[www.trimarkcorp.com](http://www.trimarkcorp.com)

# 050-1100 6mm Single Rotor Latch

This robust automotive style single rotor latch is designed for medium to heavy-duty applications for on or off-highway entrance doors, compartments and access panels. It features a hybrid rotor and catch alleviating high operational efforts by eliminating metal to metal contact. The modular design allows ease of interface with TriMark's range of external and internal methods of activation for application flexibility.

- Operator and compartment door applications
- Interior door thickness of 44mm (1.73 in.) or greater
- Medium to heavy duty doors of 23-91kg (50-200 lbs.) with door seal pressures of 23-60kg (50-150 lbs.)
- 6mm diameter striker loop

## FEATURES/BENEFITS:

- Rotor provides for vertical clearance of strike allowing for door sag, misalignment and ease of installation
- Compact size and shape; allows maximum use of door space and minimizes visibility issues
- Modular case design provides for multiple latch actuation direction and locations for application flexibility

## AVAILABLE:

- Versions are available to allow direct or remote actuation from exterior handles and interior releases
- Platform allows for reuse of existing actuation trip levers (050-0100)
- Multiple actuation directions and locations
- Standard 8.4mm diameter through axles or optional M8 X 1.25 threaded axles



## MATERIAL:

- Metal/plastic composite rotor reduces friction and deadens the door closing sound
- Case halves: High strength steel
- Spring: Non-corrosive stainless steel

## FINISH:

- Zinc plated, clear chromate steel components

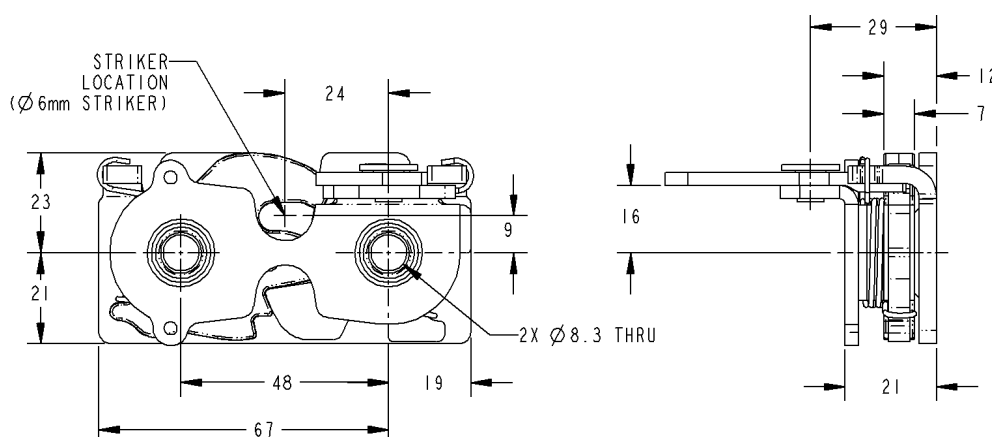
## INSTALLATION:

- Easy to install, mounts with (2) M8 X 1.25 or 5/16 fasteners (not included)
- Tighten to the manufacturers' recommended torque value, however, do not exceed 22.2 N-m (180 in-lbs.)

**CAUTION:** Latch does not comply with FMVSS 206 requirements

**Patent Pending**

For more information visit  
[www.trimarkcorp.com](http://www.trimarkcorp.com)



# 050-1200 Single Rotor Panel Latch

This product is designed for light to medium duty compartment doors, access panels and hoods for off-highway vehicle applications. The single rotor latch offers robust construction and compact size for a very cost effective price.

- Applications where it is desirable to have a single rotor latch that offers robust construction and compact size for a very cost effective price

## FEATURES/BENEFITS:

- Compact size
- Use with 8mm diameter striker or standard bar stock
- Mounts with (2) M8 fasteners (not included)

## AVAILABLE:

- Single handed configuration
- Single position rotary style latching function
- Direct or remote release actuators available
- Direct actuation - via hex drive 13mm A/F with slot
- Remote actuation - via 4.5mm diameter hole on catch

## INSTALLATION:

- Installed with (2) M8 fasteners (not included)
- Tighten to the manufacturers' recommended torque value
- Dual mounting faces



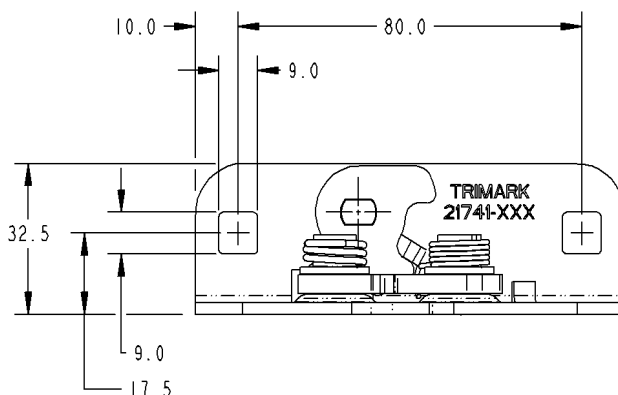
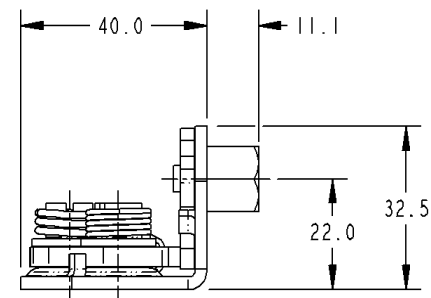
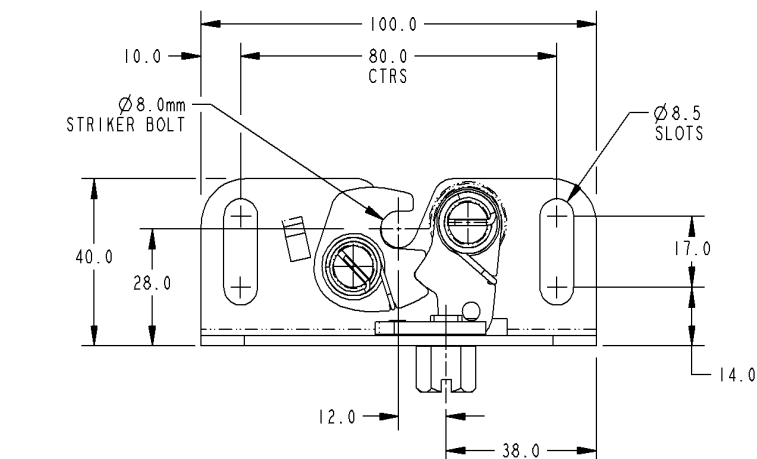
## FINISH:

- Zinc plated, clear chromate steel components

## MATERIAL:

- Actuator: stainless steel
- Springs: non-corrosive stainless steel
- Rotor and catch: hardened carbon steel

**CAUTION:** Latch does not comply with FMVSS 206 requirements



For more information visit  
[www.trimarkcorp.com](http://www.trimarkcorp.com)

# 050-1600 TriGuard Heavy Duty Single Rotor Latch

This heavy duty latch is designed for medium to heavy-duty vehicle entrance and rear door applications. It features a proven single rotor latch design, high strength 8 gauge (4.2mm) front mounting plate and robust straddle mount release lever. The slim design mounts into 2.00" (50.8mm) doors and retrofits competitive single rotor wedge style rotary latches

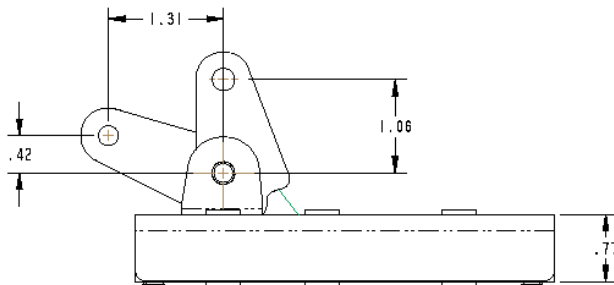
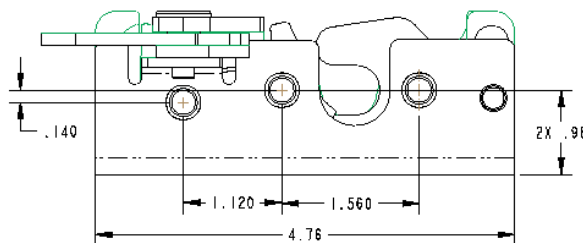
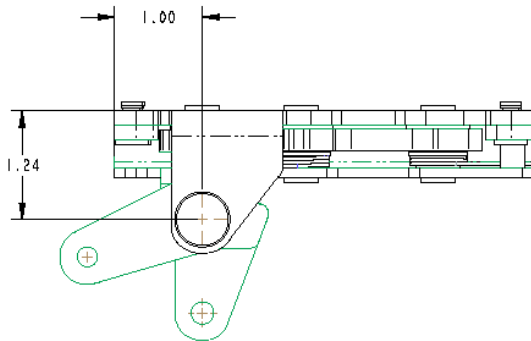
- Medium to heavy duty doors of 23-91 kg (50-200 lbs.) with door seal pressures of 23-60 kg (50-150 lbs.)

## FEATURES/BENEFITS:

- Heavy duty modular construction — survives in punishing environments
- Can be used on retrofit or new surface mount vehicle construction
- .550 (13.9mm) diameter striker bolt

## AVAILABLE:

- Right or left hand configurations (left hand shown)
- Custom configured release levers
- Other mount options (please inquire)
- Heavy duty latch/striker provides rotor/cam assist to heavy doors, hinges, and compensates for door sag



## MATERIAL:

- Case halves: High strength steel
- Springs: Non-corrosive stainless steel
- Rotor and catch: Heat treated high strength steel with dry lube coating

## FINISH:

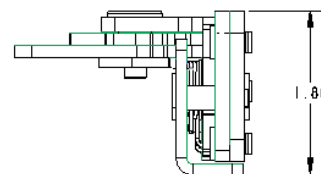
- Standard: RoHS compliant zinc plated, clear chromate steel components
- Optional: Powder coated or CARC finish in custom colors

## INSTALLATION:

- Three M8 x 1.25 class 8.8 or 5/16-18 UNC grade 8 or better fasteners are recommended (not included)
- Tighten to the manufacturers' recommended torque value

Latch complies with FMVSS206 when tested with approved TriMark Striker Bolts in accordance with SAE J839

Patent Pending



For more information visit  
[www.trimarkcorp.com](http://www.trimarkcorp.com)

# 060-0100 Plunger Bolt

This latch was designed for lightweight compartment and access doors for on or off-highway equipment where low cost slam action latching with L handle actuation is desired. It features a robust steel plunger bolt for durability and a base mount that allows for ease of installation

## FEATURES/BENEFITS:

- Minimal door seal pressures
- Easily installed using your choice of mounting fasteners (not included)
- Slotted mounting holes for easy adjustment (mounting surface must be completely flat)

## AVAILABLE:

- In left or right-handed configurations (right-hand shown)
- 90° or 20° orientation of 5/16" square drive bar opening



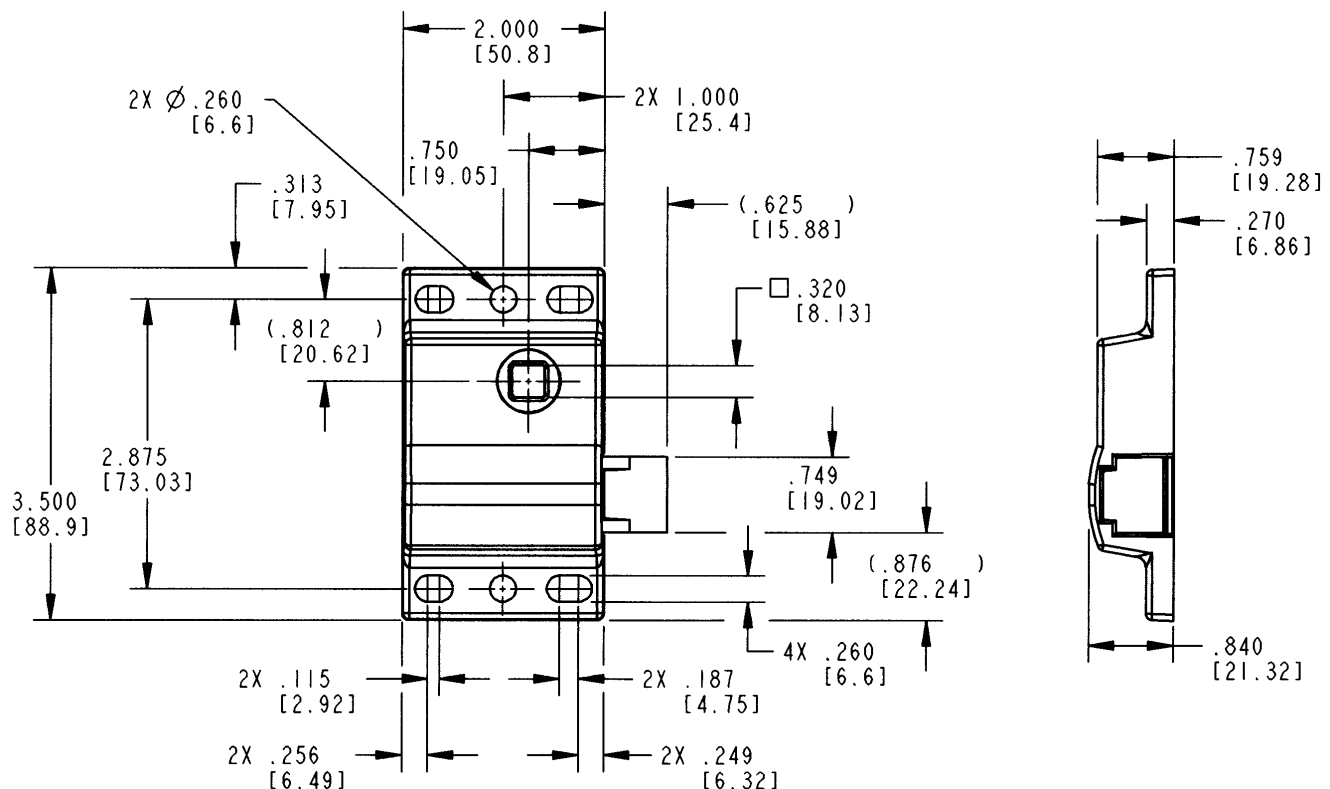
## FINISH:

- Mill--unplated
- Zinc plated
- Black powder coated

## MATERIAL:

- Housing: die cast zinc alloy
- Plunger bolt: powder metal/steel
- Back plate: zinc plated steel

For more information visit  
[www.trimarkcorp.com](http://www.trimarkcorp.com)





# 060-0500 Plunger Bolt

This latch was designed for small compartment and access doors where low cost slam action latching is desired. It features a plastic plunger bolt for ease of closing/opening and is available with rod collars and a direct release knob for installation and ease of use.

## FEATURES/BENEFITS:

- Unique, economical, single piece cover design
- .625" (15.87mm) allowable travel
- Low operating efforts
- Corrosion resistant
- Slotted mounted holes for ease of installation
- Precision placed mounting holes allow pre-drilling of holes in mating parts
- Optional inside release feature
- Non-metallic plunger bolt
- Optional collar and setscrew for easy rod attachment and adjustment

## FINISH:

- Cover and link - zinc plated with clear chromate conversion coating
- Collar - clear chromate dip

## MATERIAL:

- Cover and link: cold rolled steel
- Plunger bolt: black nylon
- Collar: zinc die cast alloy



## INSTALLATION:

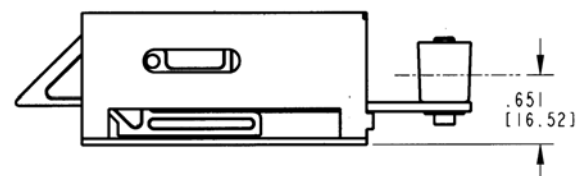
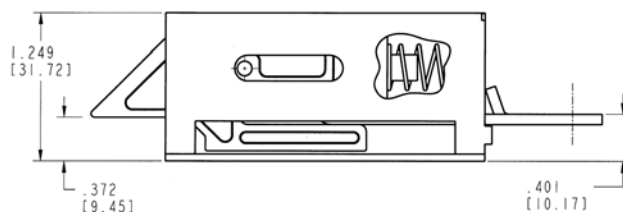
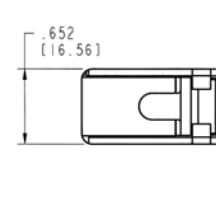
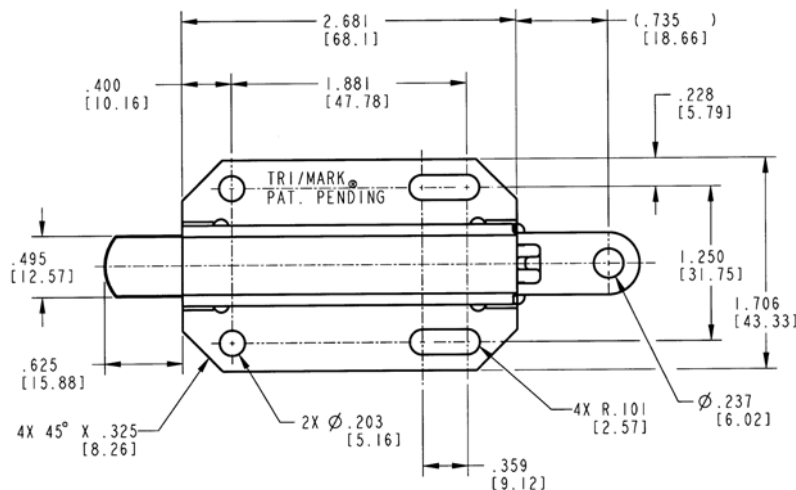
- Recommended use of #10-24 or #10-32 type D, F, G, or T thread cutting, self-threading screws (not included)

## AVAILABLE:

- With or without collar and setscrew as shown below (please inquire)
- Operated with cables or rods
- Custom rods up to .219 diameter (5.4mm)
- Optional nose configurations available (requires tooling)

**NOTE:** Rod collars are not intended or recommended for use in applications that require FMVSS 206 compliance or applications that have heavy or extreme striker bolt loads (> 25 lbs. / 11 kg) and/or high to extreme usage (> 100,000 door cycles/life).

**U.S. Patent No. 5,360,355**



**As Shown With Die Cast Collar**

# 060-0900 Plunger Bolt

This latch was designed for small compartment and access doors where low cost slam action latching is desired. It features a plastic plunger bolt for ease of closing/opening and a flange mount that allows for internal door mounting (recessed).

## FEATURES/BENEFITS:

- .500" (12.7mm) allowable travel
- Low operating efforts
- Corrosion resistant
- Non-metallic plunger bolt
- Flange mount allows for internal door mounting (recessed)

## FINISH:

- Black painted finish



## MATERIAL:

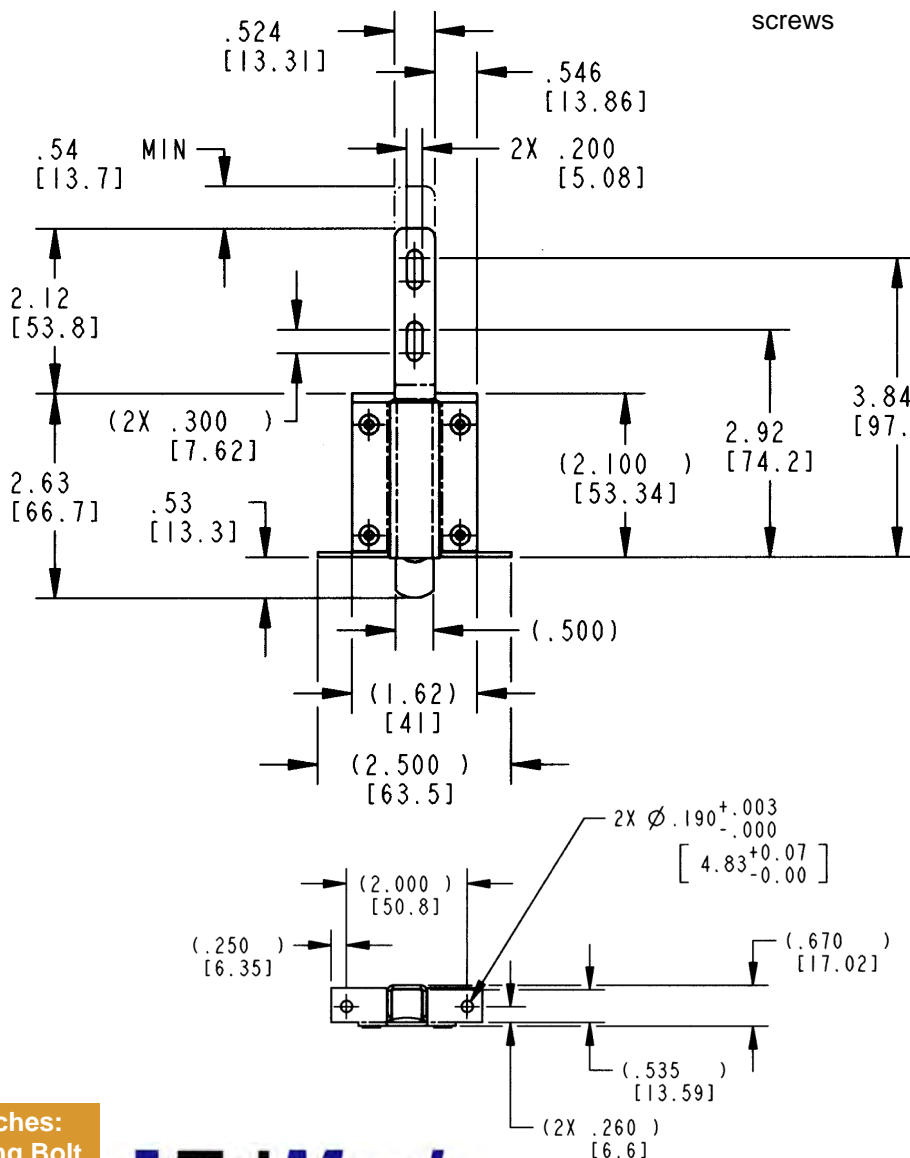
- Base, cover, slide: cold rolled steel
- Spring: stainless steel
- Plunger: nylon

## AVAILABLE:

- Custom rods up to .188 diameter (4.5mm)

## INSTALLATION:

- Recommended use of (2) 3/16 diameter (4.5mm) pop rivets or #12 type AB, B or BP steel thread forming screws



For more information visit  
[www.trimarkcorp.com](http://www.trimarkcorp.com)

# 060-0901 Low Profile Plunger Bolt

This latch was designed for small compartment and access doors where low cost slam action latching is desired. It features a robust steel plunger bolt for durability and a base mount that allows for ease of installation.

- Light duty baggage doors
- Door weights up to 30 lbs. (13.6 kg)
- Door seal load up to 15 lbs. (6.8 kg)

## FEATURES/BENEFITS:

- Plunger bolt retraction is independent of link
- .500" (12.7mm) allowable travel
- Low operating efforts
- Corrosion resistant
- Slotted mounting holes for ease of installation

## FINISH:

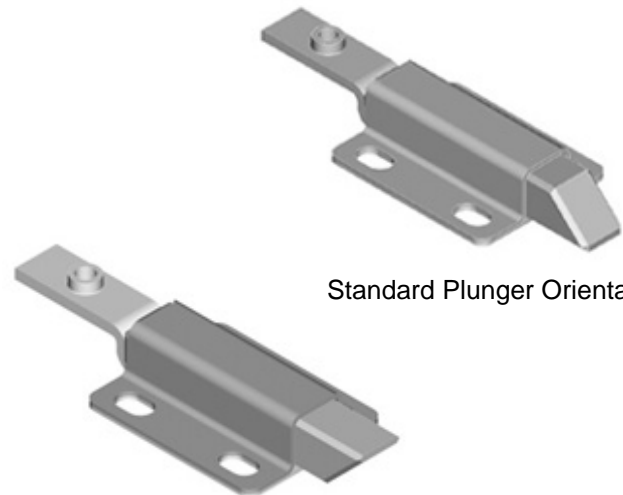
- Cover, link, plunger bolt - zinc plated with clear chromate conversion coating

## MATERIAL:

- Cover and link: cold rolled steel or 304 stainless steel
- Plunger bolt: powder metal
- Spring and base plate: stainless steel

## INSTALLATION:

- Recommended use of 1/4-20 or M6 type fasteners



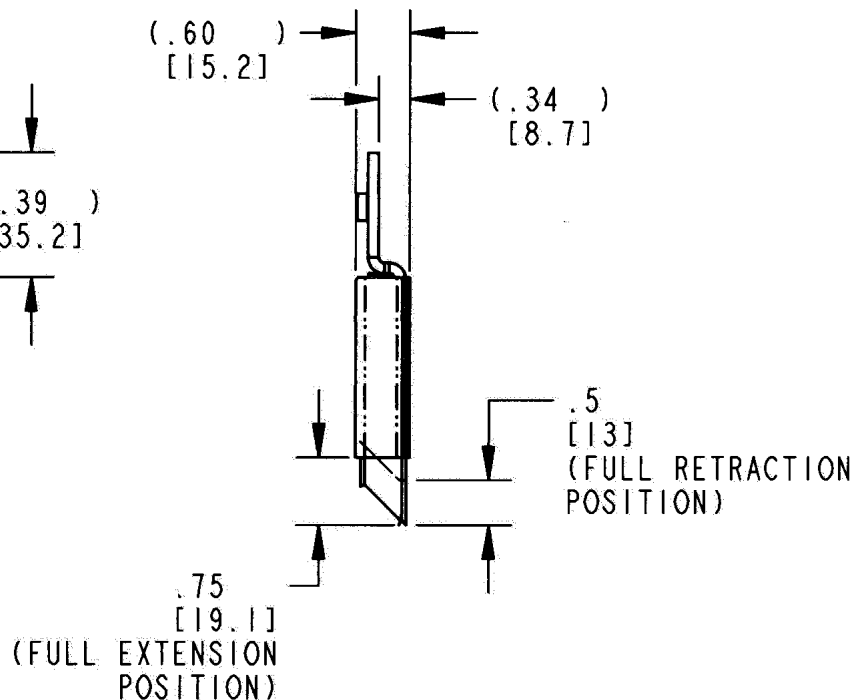
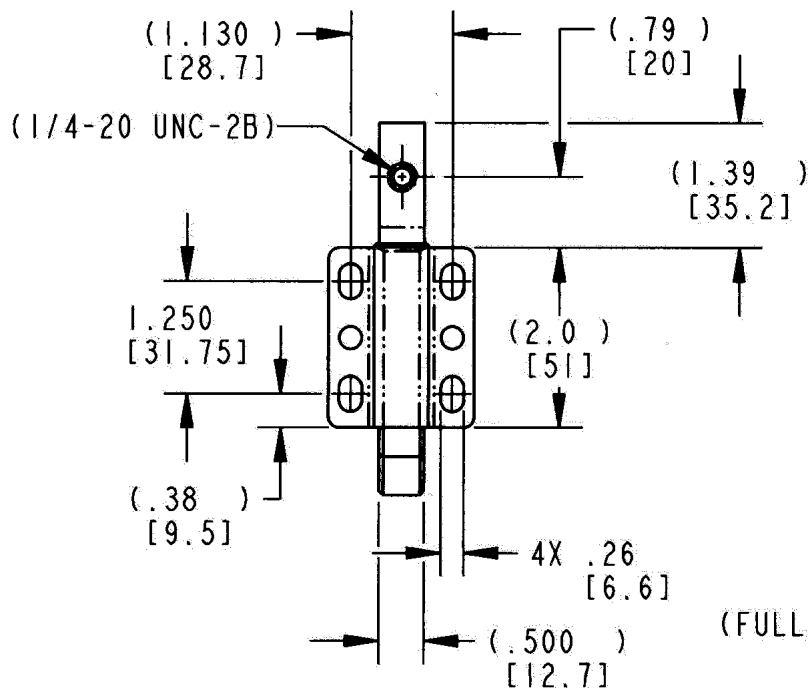
Standard Plunger Orientation

Reverse Plunger Orientation

## AVAILABLE:

- Reverse plunger for inward swinging doors (please inquire)

**CAUTION:** Does not meet FMVSS206 requirements.



# 060-1200 RV Screen Door Latch

This product is designed for securing of screen doors for RV motor homes and travel trailers. It features sturdy die cast zinc construction for years of trouble free use.

## FEATURES/BENEFITS:

- Dual function -- latch secures the screen door to the exterior door as well as the door jamb
- Allows for one hand operation with positive slam action latching function
- Low profile design will work with a wide variety of doors

## AVAILABLE:

- Right hand and left hand versions (right hand shown)
- Door latch and strike are included for a total system solution

## INSTALLATION:

- Easy to install with (6) #8 fasteners (included)



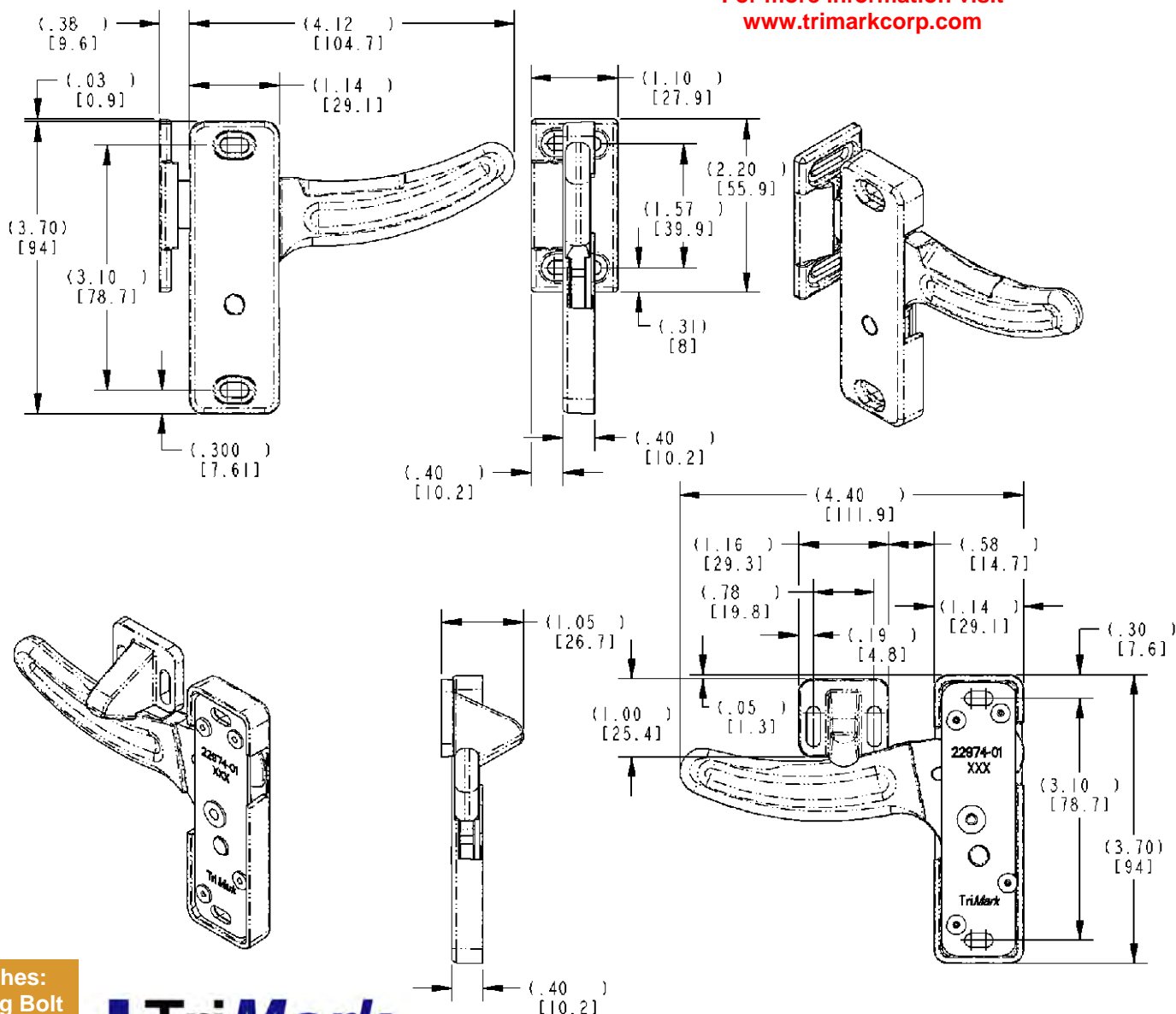
## MATERIAL:

- Sturdy die cast zinc alloy
- Non-corrosive stainless steel spring
- Door strike and keeper—engineered plastic

## FINISH:

- Black powder coated

For more information visit  
[www.trimarkcorp.com](http://www.trimarkcorp.com)



# 060-1300 Flush Mount Security Lock

This redesigned security lock is intended for recreational vehicle entrance doors including motor homes and travel trailers where it is advantageous to use a remote mounted security lock. It features a serviceable KeyOne™ Plus lock cylinder and provides for easier installation.

- Entrance door applications in travel trailers and motor homes with thicknesses of 1-1/2" (38.1mm) to 2-1/2" (63.5mm)

## FEATURES/BENEFITS:

- Can be mounted on either hollow or solid core door on travel trailers and motor homes
- Universal round design allows for use on left or right hand doors
- Dead bolt locks into the fully extended position for true dead bolt functioning
- Adaptable to powerlock actuation
- KeyOne™ Plus lock allows for serviceable lock cylinder



## AVAILABLE:

- Keyed random with 100 key codes
- Standard 5-1/2" (139.7mm) backset
- Lock can be keyed to match other TriMark door products with KeyOne™ Plus for a single-key system, keyed alike or provided non-locking



## INSTALLATION:

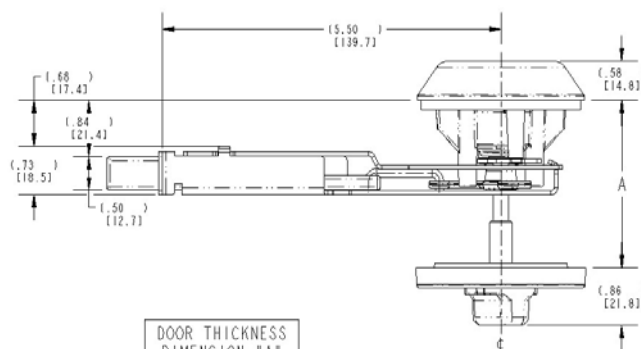
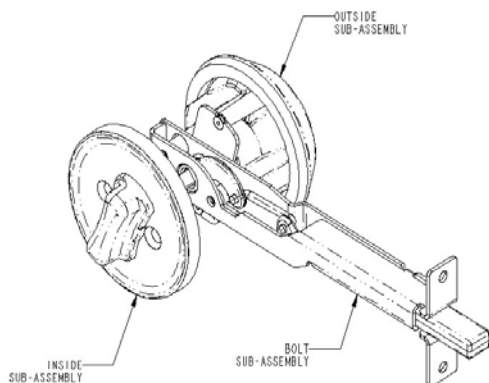
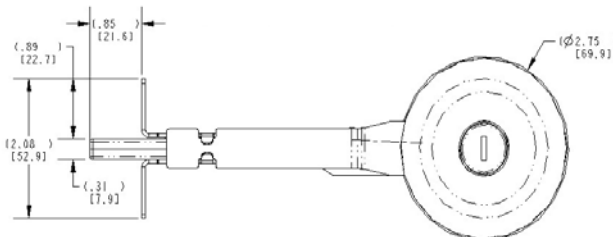
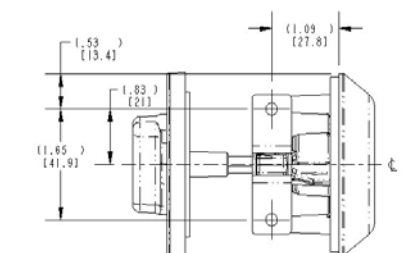
- Security lock sub-assemblies (3) are easy to install with supplied fasteners
- Supplied with gasket already applied under recess in housing flange for simple, clean installation

## MATERIAL:

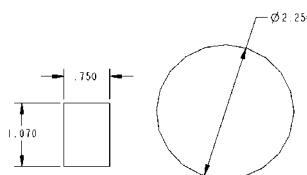
- Interior/exterior housing, lock knob and deadbolt - die cast zinc alloy
- Stamped steel deadbolt carrier

## FINISH:

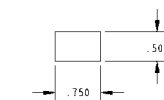
- Black powder coated and chrome
- Zinc plated clear chromate steel components
- Additional colors and finishes available — please inquire



DOOR THICKNESS DIMENSION "A"
1.50 [38.1]
2.00 [50.8]
2.50 [63.5]



DOOR CUTOUT



JAMB CUTOUT



# 030-0500 Pivoting Catch Compartment Latch

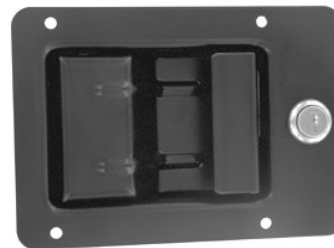
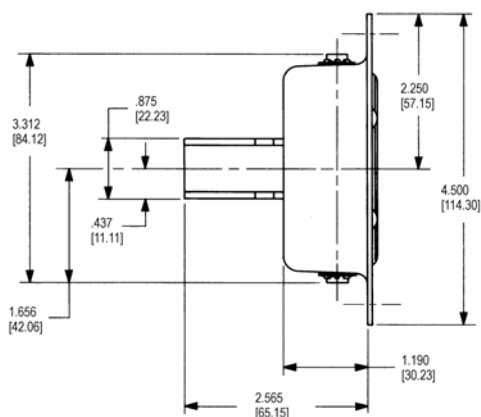
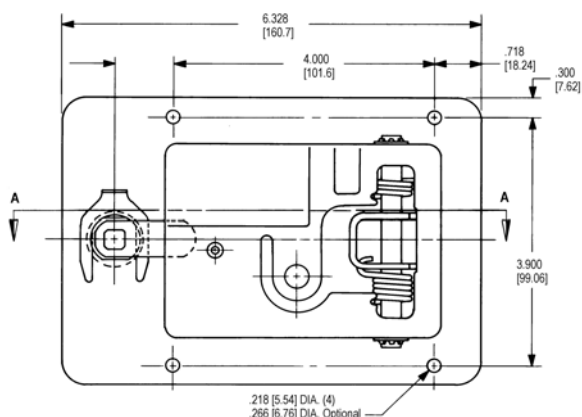
This latch was specifically designed for storage and compartment doors for off-road vehicles including agricultural and construction equipment and industrial enclosures. It features a pivoting hook latching design and a reverse paddle design that is suited for top hinged doors and resistance to the insertion on foreign objects.

- Service and utility truck body doors
- Electrical switch and transformer boxes

## FEATURES/BENEFITS:

- Pivoting catch allows relative movement between the door and frame when the vehicle frame flexes
- Components are spring loaded internally to minimize effects of vibration
- Reverse paddle design of the compartment latch is suited for top hinged doors and provides resistance to insertion of foreign objects
- Two levels of performance/duty: the heavy duty version (030-0550) provides a higher level of resistance to vibration and wear

For more information visit  
[www.trimarkcorp.com](http://www.trimarkcorp.com)



## AVAILABLE:

- Key locking - keyed alike with most common key codes to match paddle actuators used for operator enclosures
- Non-locking
- Padlockable for increased security
- Optional hole patterns

## MATERIAL:

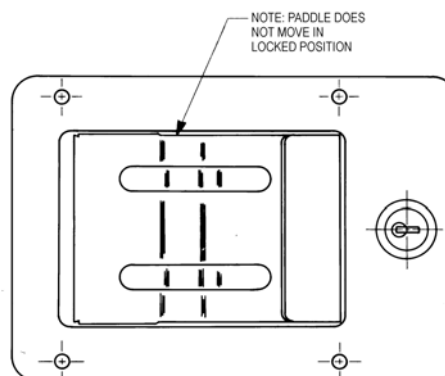
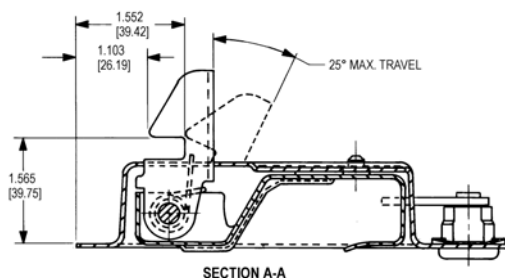
- All steel reinforced construction

## FINISH:

- Zinc plate, clear chromate conversion coat for maximum paint adhesion and resistance to rust
- Black powder coat

## INSTALLATION:

- Lock cylinder may be installed after the latch has been assembled into the door and painted
- Four 3/16" M4 diameter steel "pop" rivets or 1/4-20 M6 screws (not included)



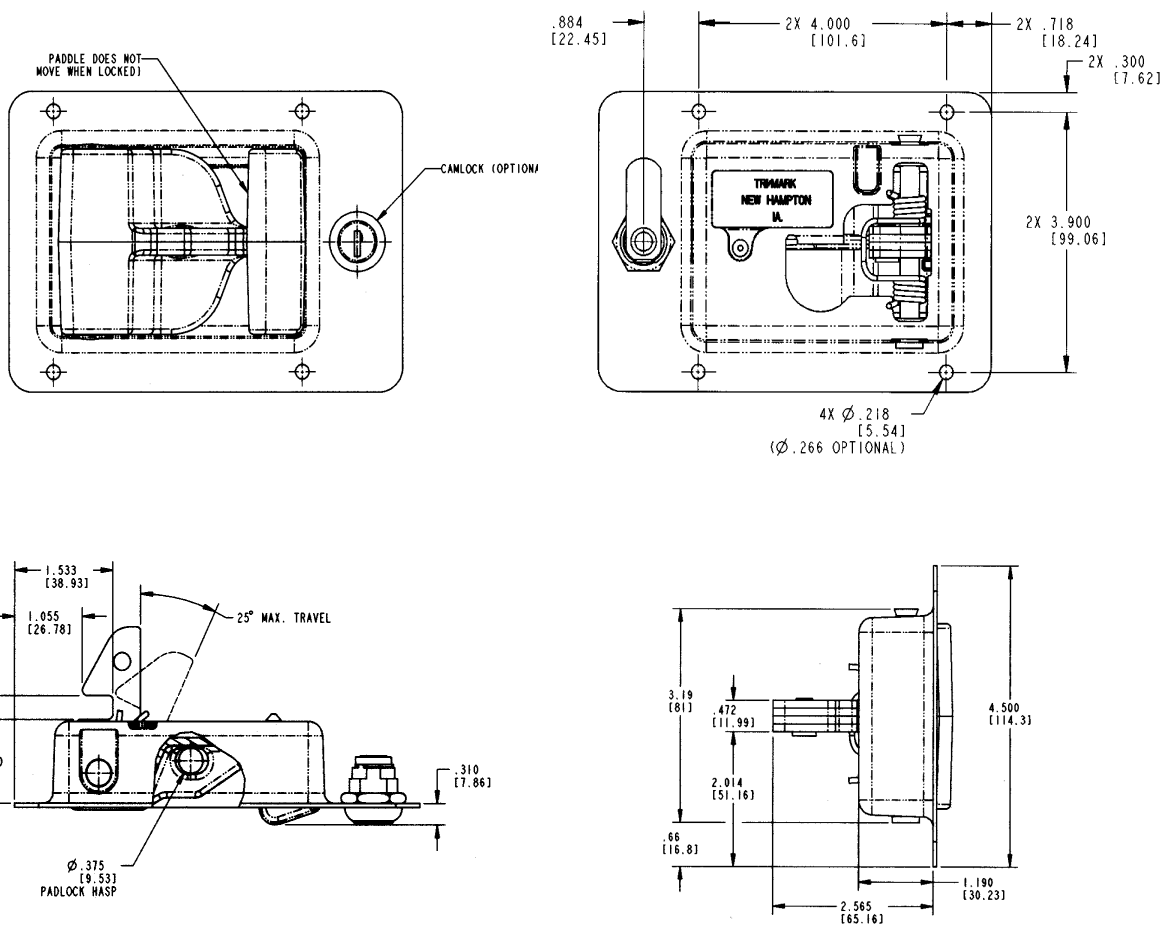
# 030-0550 Heavy Duty Pivoting Catch Compartment Latch

## 030-0550 FEATURES:

- The high strength steel laminated hook resists wear and increases strength
- Heavy duty zinc die-cast paddle resists deformation
- Retrofits the same cutout as the 030-0500 Pivoting Catch Compartment Latch

**CAUTION:** Compartment latch does not meet FMVSS 206 load requirements.

For more information visit  
[www.trimarkcorp.com](http://www.trimarkcorp.com)



# 030-0600 / 030-0625 Rotating Catch Compartment Latch

## DESIGNED FOR:

- Single lid or gull wing cross bed tool boxes or similar storage boxes and lockers

## FEATURES/BENEFITS:

- Simplified design allows for easy opening and closing force that does not require opening the paddle before closing the lid
- When locking latch is in the locked mode and connected remotely, other latch will be inoperable

## AVAILABLE:

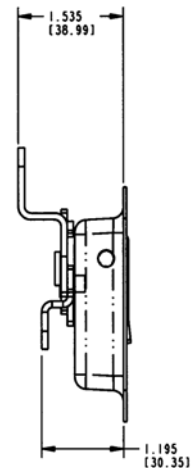
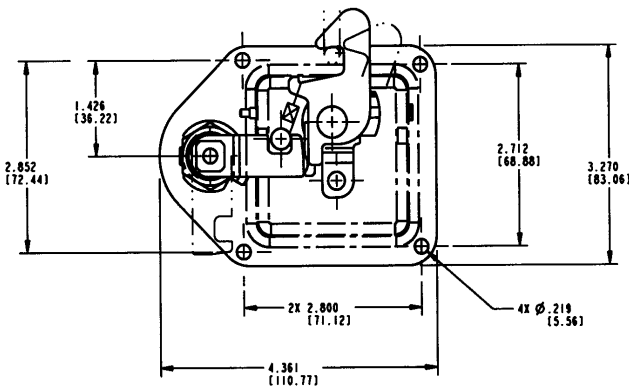
- Non-locking or locking versions available with up to 10 different key codes with shuttered keyway
- Two standard mounting hole patterns
- Two-point option
- Optional neoprene foam gasket is available for under the flange of housing

- Supplied cam lock can be packaged unassembled or assembled to the latch with a clip or nut depending on cutout and panel thicknesses

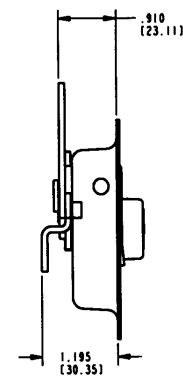
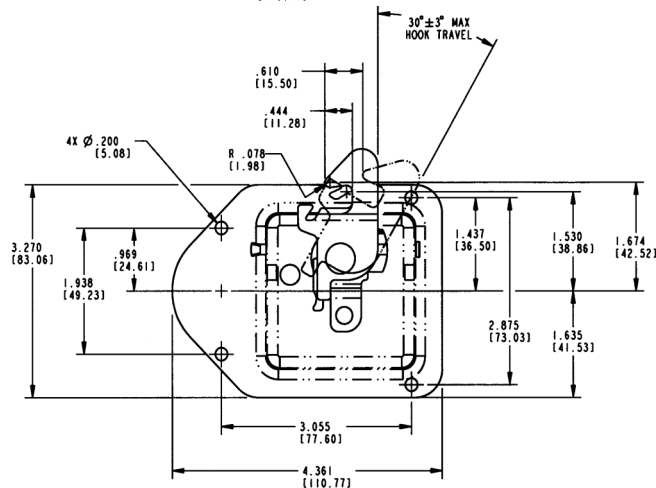
U.S. Patent No. 5,042,854



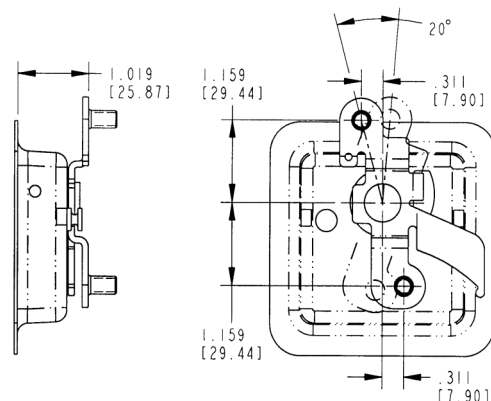
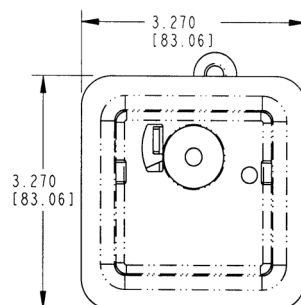
**LOCKING ASSEMBLY SHOWN WITH OFFSET HOOK AND OPTIONAL HOLE PATTERN**



**NON-LOCKING ASSEMBLY SHOWN WITH FLAT HOOK AND STANDARD HOLE PATTERN**



**030-0625 2-POINT PIVOT SHOWN WITH OPTIONAL HOUSING**



# 030-1125 Paddle Handle With Hook

This compartment latch was designed for light to medium duty storage and compartment doors. This non-handed product features a pivoting hook latching design.

- Cross bed tool boxes
- Truck topper and lift gate doors
- Most storage, compartment, and access doors with single or 2-point latch system

## FEATURES/BENEFITS:

- Water resistant
- Sleek automotive styling
- Paddle is rigid when locked
- Shuttered key cylinder
- Keying security
- Flush mount -- contoured surface
- Corrosion resistant
- Slam action -- hook operates independent of paddle

## AVAILABLE:

- Non-locking or locking with shuttered keyway
- Keyed alike or keyed random. 50 key codes -TM901-TM950
- Slam action version
- With rod collars



## MATERIAL:

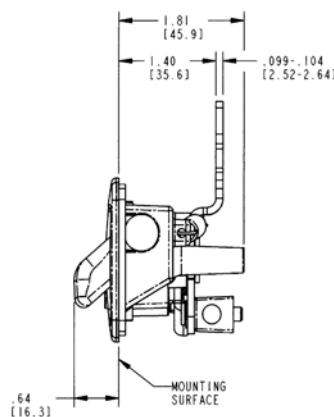
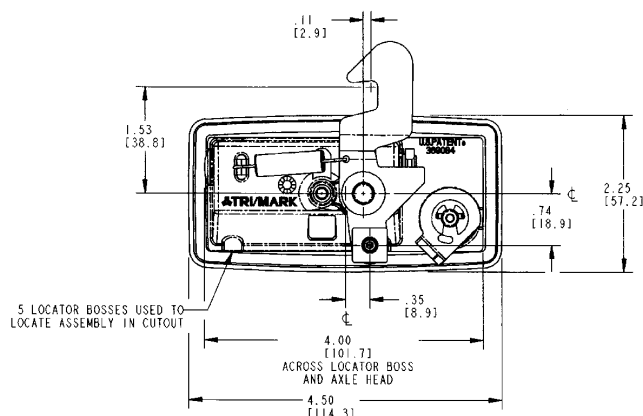
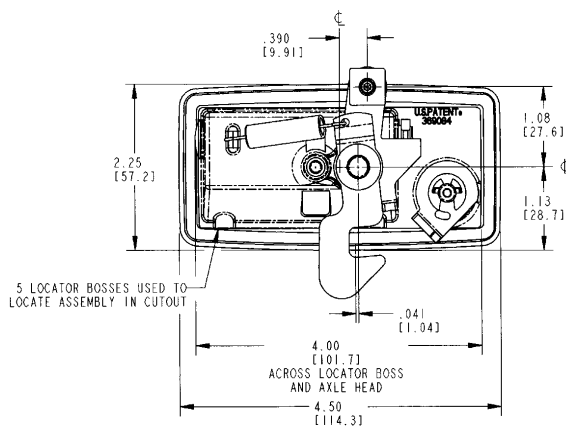
- Housing and paddle: die cast zinc alloy
- All steel parts (axles, pivot arm, pivot plate, lock cam): cold rolled steel with zinc plate clear chromate for corrosion resistance

## FINISH:

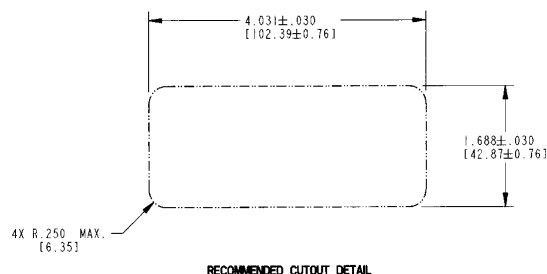
- Black powder coated

## INSTALLATION:

- Supplied with gasket already applied under recess in housing flange for simple, clean installation
- Blind mounting with one #10-24 UNC mounting fastener
- Optional mounting brackets (please inquire)
- Optional hook designs (13980-01 please inquire)



For more information visit  
[www.trimarkcorp.com](http://www.trimarkcorp.com)



# 050-I 300 Plastic Slam Latch

TriMark's NEW 050-1300 plastic slam latch is designed to secure a variety of storage, compartment and access doors.

## FEATURES/BENEFITS:

- Slam action latch is non-handed
- Small size will work in a variety of small compartments and applications
- Simple, cost-effective latch offers an alternative to standard rotary latches
- Operation - dual plungers allow the rod to enter into the latch as normal slam action, then the rods must be retracted to allow for the release
- Reduced operating efforts under load
- Reduced operating noise and rattle when compared to zinc/steel products
- Engineered plastic withstands corrosion and has a lower coefficient of friction, reducing closing and operating efforts
- Striker diameter –.375 (9.5mm)



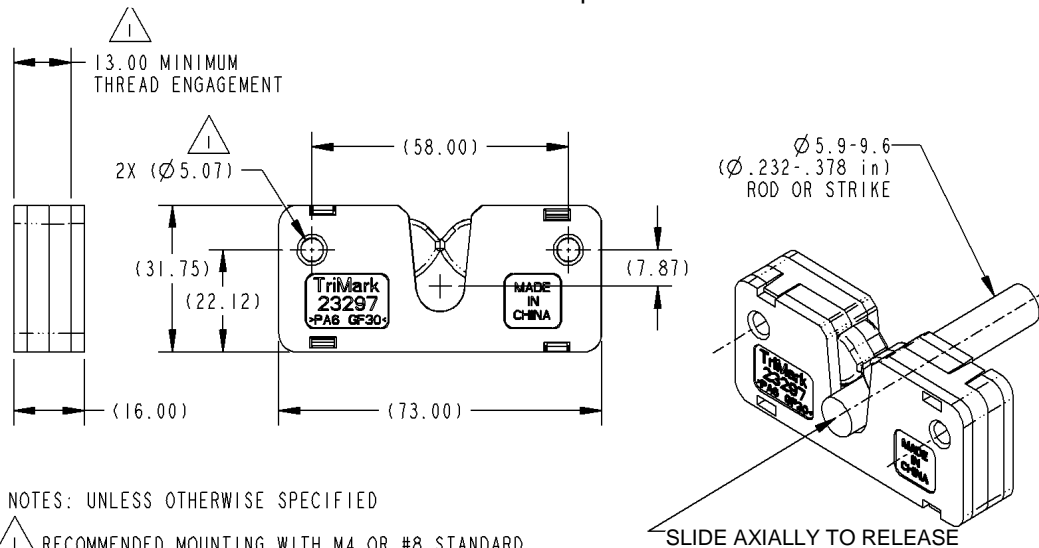
## INSTALLATION:

- Easy to install with two (2) M6 thread forming fasteners (available) or two (2) M4 bolts (not included)

## MATERIAL:

- Engineered injection molded plastic
- Non-corrosive stainless steel springs
- Internal cold rolled stamped steel reinforcement plate (zinc plated, clear chromate)

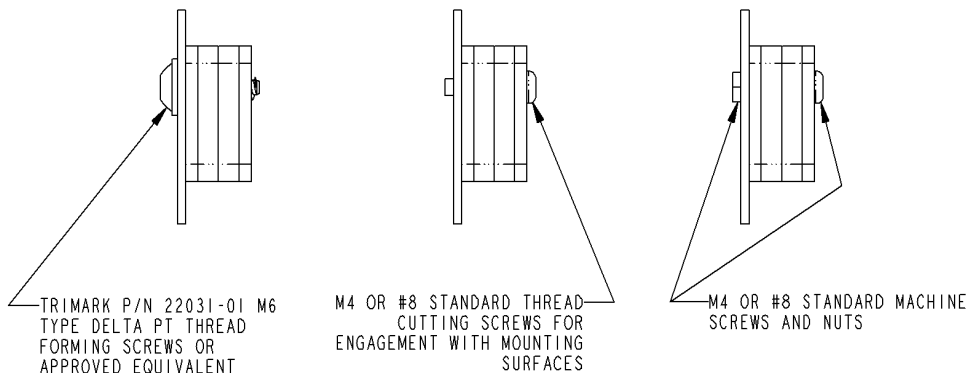
**CAUTION:** Latch does not comply with FMVSS 206 requirements



NOTES: UNLESS OTHERWISE SPECIFIED

1. RECOMMENDED MOUNTING WITH M4 OR #8 STANDARD THROUGH BOLTS OR TRIMARK P/N 22031-01 M6 TYPE DELTA POINT THREAD FORMING SCREWS OR APPROVED EQUIVALENT WITH 13.00mm MINIMUM THREAD ENGAGEMENT

## MOUNTING OPTIONS





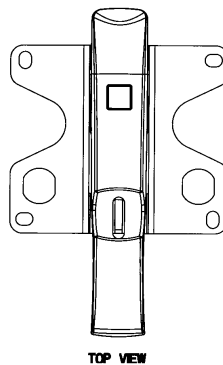
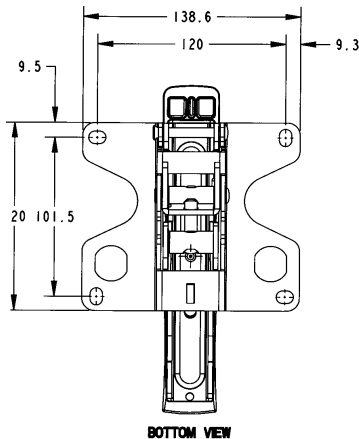
# 080-0200 Lever Style Compression Latch

This product is designed for light to medium duty compartment doors, access panels and hoods for off-highway vehicle applications. This heavy duty lever action fixed grip compression latch offers a long lever handle for increased door closing leverage, simplicity of operation and comfortable grip

- Light to medium duty compartment doors, access panels and hoods for off-highway vehicle applications
- Applications where it is desirable to have a heavy duty lever action fixed grip compression latch

## FEATURES/BENEFITS:

- Robust design provides long lever handle for increased door closing leverage, simplicity of operation and comfortable grip in heavy duty applications
- Double cam design works with strikers up to 10mm in diameter providing a high level of resistance to vibration and wear
- Over-center action prevent accidental opening due to shock or vibration
- 4 mm compression dampens vibration and helps reduce noise and rattle
- Stylish handle cover provides a comfortable grip



## AVAILABLE:

- Standard padlock hasp
- Key locking provision to add a cam lock for increased security

## MATERIAL:

- Robust all steel reinforced construction
- Handle cover: Black engineered plastic
- Springs: Non-corrosive stainless steel

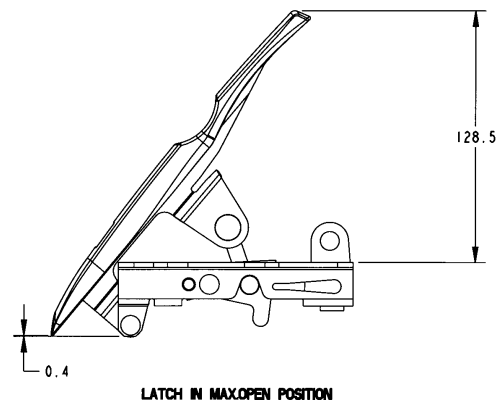
## FINISH:

- Zinc plated steel components with black chromate

## INSTALLATION:

- Four M6 or 1 / 4 in. fasteners (not included)
- Latch mounts from inside of door panel providing a clean
- Lock cylinder may be installed after the latch has been assembled into the door

For more information visit  
[www.trimarkcorp.com](http://www.trimarkcorp.com)



# 080-0400 CompOne™ Compression Latch

This compression lock is a redesign of the popular TriMark West Alloy brand 6680. Featuring 5mm of compression with a 180° turn of the key, this robust lock is intended for gasketed doors, is fully adjustable, water resistant and easy to install.

## DESIGNED FOR:

- Light to medium on or off-highway panel and compartments where door gaskets require a compression lock to pull-in for a firm seal

## FEATURES/BENEFITS:

- The KeyOne™ Plus locking system allows the operation of multiple onboard locking hardware with a single key or the option to key differently
- Key-operated compression lock provides 5mm of compression with 180° turn of the key, helps reduce or eliminate noise and rattles caused by vibration.
- Internal and external gasket resists water infiltration through the door
- Cam mounting allows for 8mm [.315 in.] adjustment and cams are rotatable in 45° increments

## AVAILABLE:

- With various fixing kits consisting of mounting gasket, panel nut, anti-vibration mount washer, 2 cam nuts/washers and standard cam
- Special cams are available upon request



## MATERIAL:

- Sturdy die cast zinc alloy
- Fixing kits: steel

## FINISH:

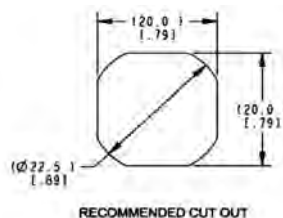
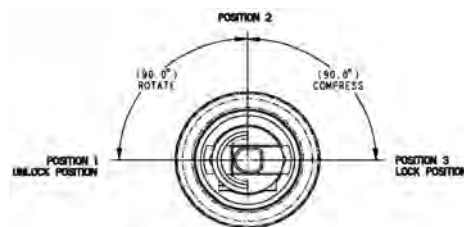
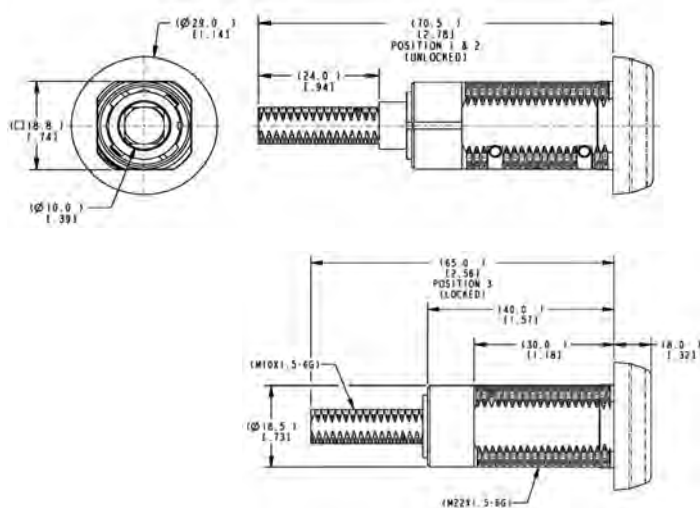
- Head: black chromate or chrome plated
- Steel components: Zinc plate and clear chromate conversion coat

## INSTALLATION:

- The product installs easily in a panel with supplied panel nut and vibration washer through a single mounting hole
- Panel thickness range up to 22mm [.866 in.]
- Maximum mounting nut torque 30 N-m [22.1 Lbs-Ft]

For more information visit  
[www.trimarkcorp.com](http://www.trimarkcorp.com)

Patent Pending



# 090-0500 / 090-0520 Window Hold-Open

This easy to operate window hold-open is designed for top and side hinged venting windows for on and off-highway vehicles. It features an over-center design that orientates the window at fully closed and fully open positions and an optional quick release pin.

- Mushroom window fixings designed for 5mm or 6mm glass thickness
- Non-handed style will work on windows in any orientation
- Easy to install with window fixings (optional)

## AVAILABLE:

- With or without quick release pin

## INSTALLATION:

- Installs through 18mm dia. hole

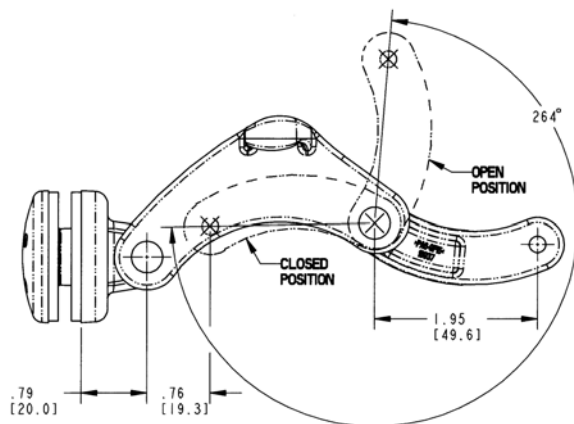
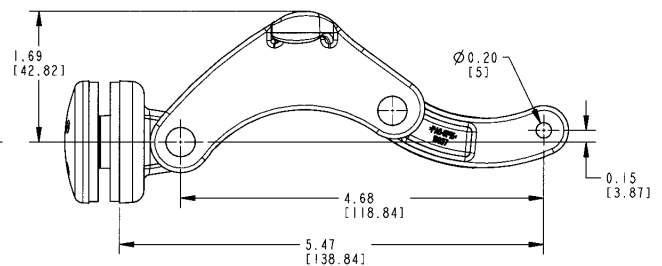
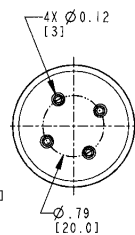
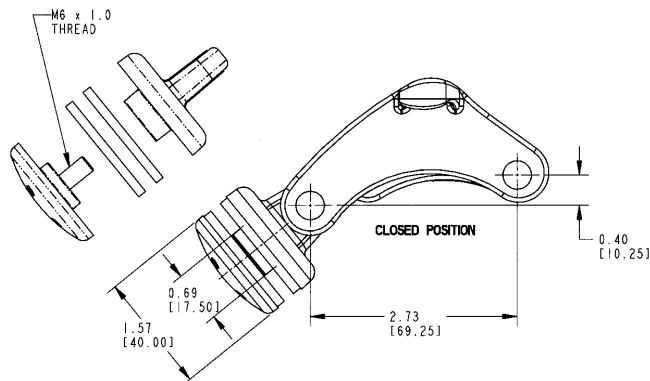
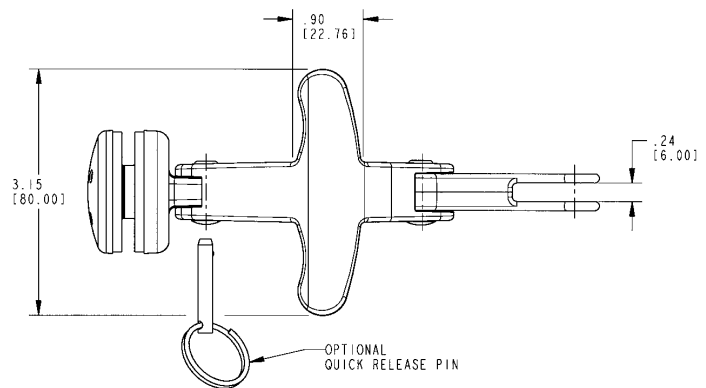
## MATERIAL:

- Glass reinforced nylon (black)

Design Patent No. D443,809



090-0520 Window Hold-Open



## 090-0500 WindowHold-Open

This window hold-open is designed for top and side hinged venting windows for on and off-highway vehicles. It is available with over-center design (fully closed/fully open) or detented arm to position the window at intermediate positions and quick release pin.

# I 30-0100 Dual Release Door Hold-Open

This product is designed for light to medium duty agricultural, construction personnel doors or any door that needs to be held in an open position. The simple rotating knob design allows for the door to be released from the open position from either the inside of the cab or from the ground level.

- Any application where it is desirable to hold or retain a hinged door in an open position

## FEATURES/BENEFITS:

- Simple, easy to use, rotating knob/pin latch
- Engineered to withstand vibration, shock, dust, dirt and moisture
- Ergonomic knob design
- Two-stage lead in helps align the striker and receiver to compensate for door sag
- Universal design
- Rotating knob(s) allows for the door to be released from the open position from either the inside of the cab or from the ground level
- Durability in tough applications
- Easy to install
- Easily adaptable to a wide variety of door/cab configurations
- Fills a niche between the low cost "friction type" hold-opens and top end rotary and bayonet style products presently available



## MATERIAL:

- Engineered plastic withstands corrosion and UV exposure and has a lower coefficient of friction, reducing closing and operation efforts
- Striker shroud is the thermoplastic rubber (TPR) to help absorb door shock loads

## INSTALLATION:

- Easy to install with special thread forming screws (included)
- Flange mounting and self adhesive gaskets (included) permits through glass mounting

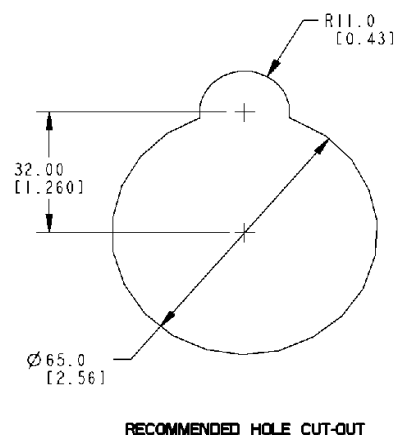
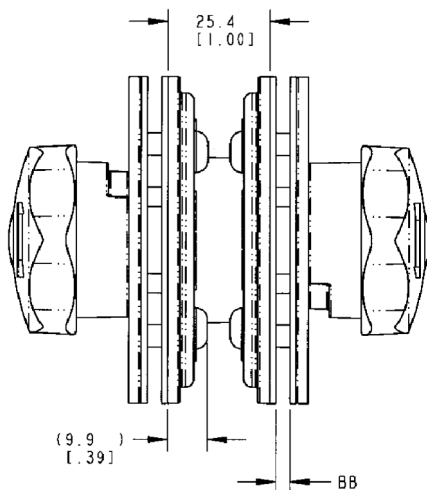
## AVAILABLE:

- With gasket options to adapt to a wide range of door/cab thickness (3mm-6mm [.118-.236])

**CAUTION:** Door hold-open is not designed to secure a door in the closed position and does not comply with FMVSS 206

For more information visit  
[www.trimarkcorp.com](http://www.trimarkcorp.com)

U.S. Patent No. 6,357,078



# 130-0110 Single Release Door Hold-Open

This product is designed for light to medium duty agricultural, construction personnel doors or any door that needs to be held in an open position. Using the same simple rotating knob design as the 130-0100, the fixed receiver on this product provides a lower cost solution where release from inside the vehicle is not a requirement.

- The 130-0110 fixed receiver is designed for use with TriMark's 130-0100-01-XX Striker Assembly. This component provides for a lower cost solution for light to medium duty agricultural, construction or other equipment personnel doors that need to be held in an open position and where release from inside the vehicle is not a requirement

## FEATURES/BENEFITS:

- New shroud design provides a means to absorb shock loads and provide door release
- Revised mounting provides easier installation and alignment
- Simple, easy to use, rotating knob/pin latch
- Engineered to withstand vibration, shock, dust, dirt and moisture
- Ergonomic knob design
- Two-stage lead in helps align the striker and receiver to compensate for door sag
- Universal design
- Durability in tough applications
- Easy to install
- Easily adaptable to a wide variety of door/cab configurations
- Fills a niche between the low cost "friction type" hold-opens and top end rotary and bayonet style products presently available



## MATERIAL:

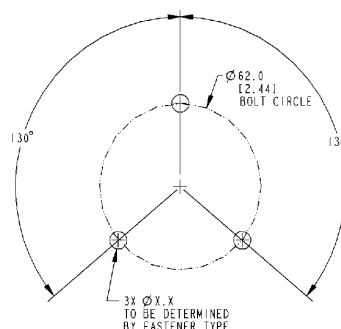
- Engineered plastic withstands corrosion and UV exposure and has a lower coefficient of friction, reducing closing and operating efforts

## INSTALLATION:

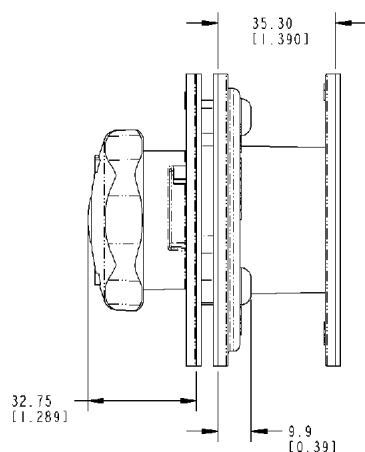
- Flange mounting and gasket (included)
- Easy to install with (3) M6 fasteners (not included)

**CAUTION:** Door hold-open is not designed to secure a door in the closed position and does not comply with FMVSS 206

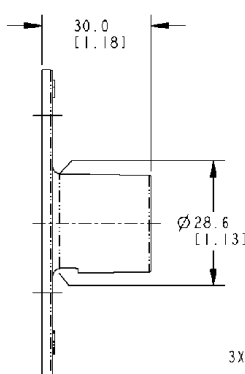
**U.S. Patent No. 6,357,078**



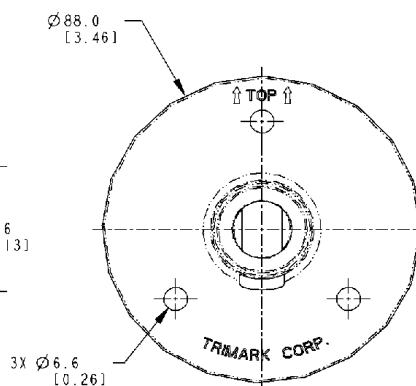
## RECOMMENDED HOLE CUT-OUT FOR THE RECEIVER



STRIKER / DOOR SIDE



RECEIVER / DOOR SIDE



FIXED RECEIVER