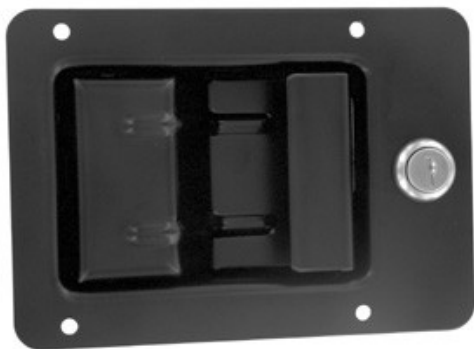


030-0500
Pivoting Catch
Compartment Latch
030-0550 Heavy Duty Pivoting
Catch Compartment Latch



This latch was specifically designed for storage and compartment door for off-road vehicles including agricultural and construction equipment and industrial enclosures. It features a pivoting hook latching design and a reverse paddle design that is suited for top hinged doors and resistance to the insertion of foreign objects.

DESIGNED FOR:

- On or off-highway vehicle applications - construction, mining, agricultural
- Service and utility truck body doors
- Most storage, compartment and access doors
- Electrical switch and transformer boxes



www.trimarkcorp.com

TriMark Corporation

500 Bailey Avenue

P.O. Box 350

New Hampton, Iowa 50659

United States

Tel: 641-394-3188

Fax: 641-394-2392

1-800-447-0343

www.trimarkcorp.com

10002707 QM08 ISO 9001: 2008
10002707 TS09 ISO/TS 16949: 2009



TriMark Corporation

TriMark Europe

Cedar Court

Walker Road

Bardon Hill

Coalville LE67 1TU

United Kingdom

Tel: +44(0)1530 512460

Fax: +44(0)1530 512461

www.trimarkeu.com

427961 QM08 ISO 9001 : 2008
427961 UM ISO 14001 : 2004



TriMark Europe Ltd.



FEATURES/BENEFITS:

- Pivoting catch allows relative movement between the door and frame when the vehicle frame flexes
- Components are spring loaded internally to minimize effects of vibration
- Reverse paddle design of the compartment latch is suited for top hinged doors and provides resistance to insertion of foreign objects
- Two levels of performance/duty: the heavy duty version (030-0550) provides a higher level of resistance to vibration and wear

AVAILABLE:

- Key locking - keyed alike with most common key codes to match paddle actuators used for operator enclosures

MATERIAL:

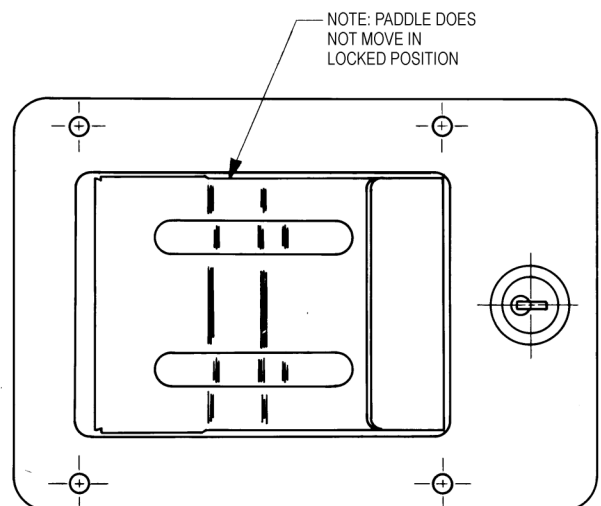
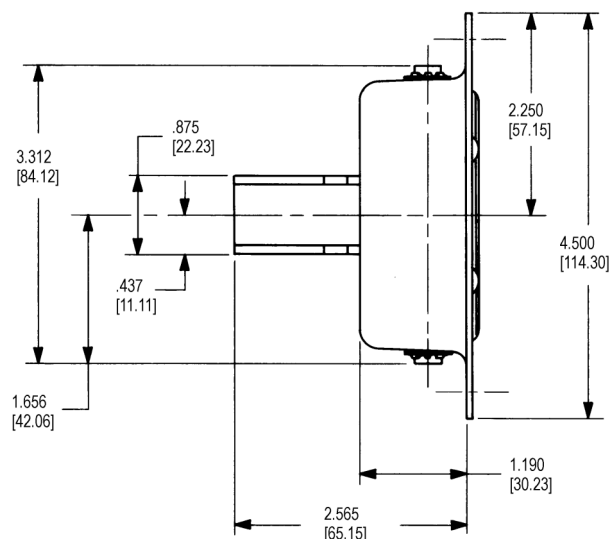
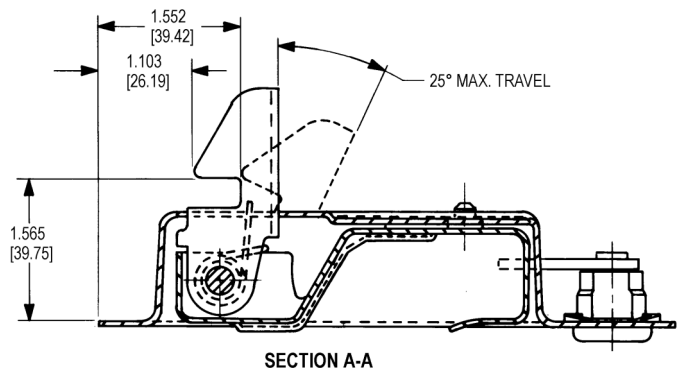
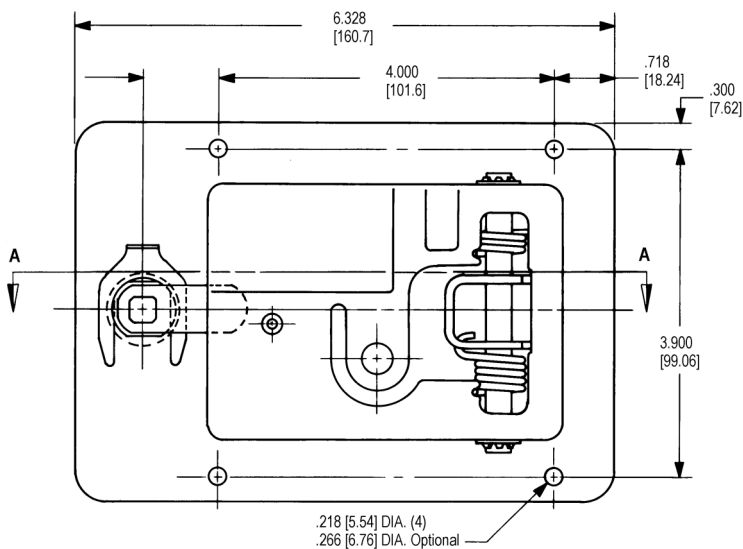
- All steel reinforced construction

FINISH:

- Zinc plate, clear chromate conversion coat for maximum paint adhesion and resistance to rust
- Black powder coat

INSTALLATION:

- Lock cylinder may be installed after the latch has been assembled into the door and painted
- Four 3/16" M4 diameter steel "pop" rivets or 1/4-20 M6 screws (not included)

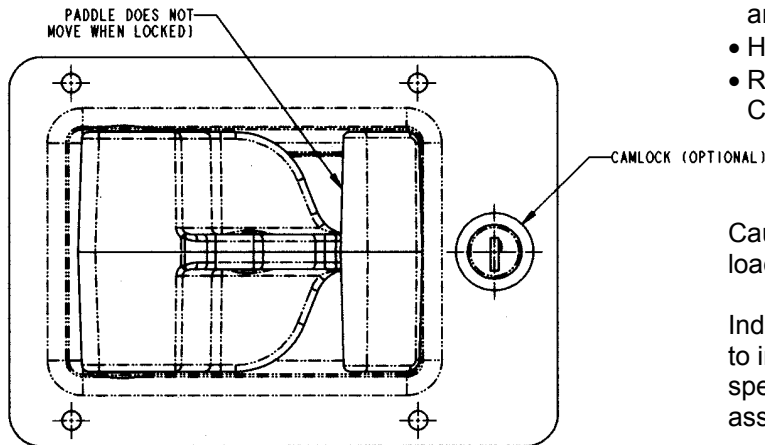


030-0550

Heavy Duty Pivoting Catch Compartment Latch

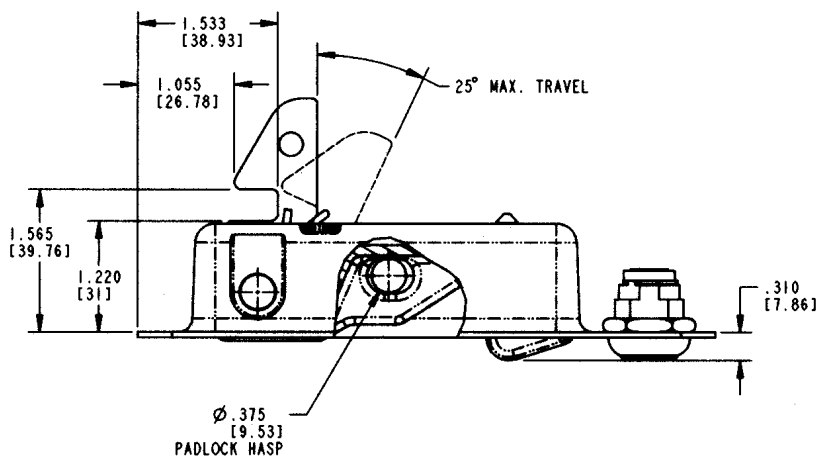
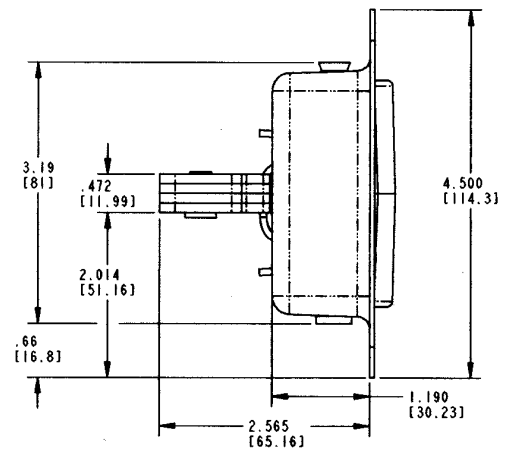
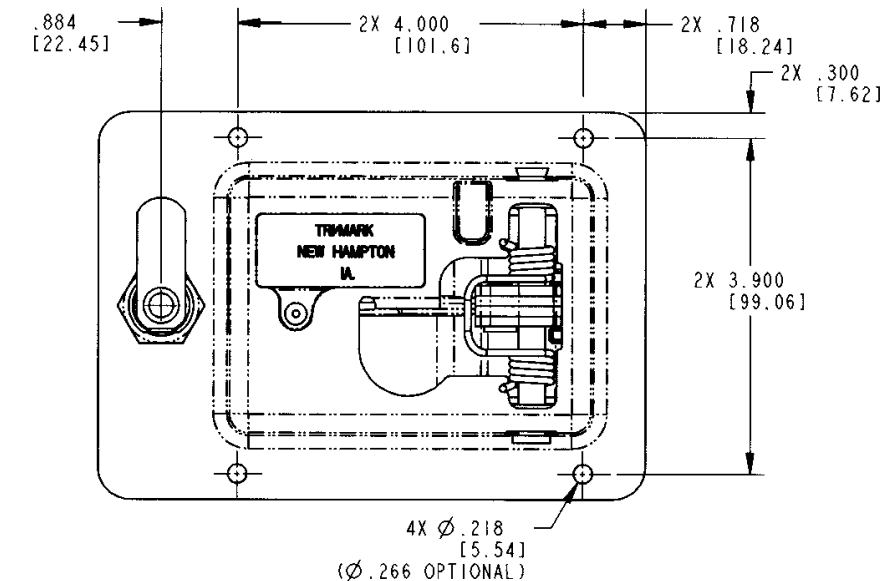
030-0550 FEATURES:

- The high strength steel laminated hook resists wear and increases strength
- Heavy duty zinc die-cast paddle resists deformation
- Retrofits the same cutout as the 030-0500 Pivoting Catch Compartment Latch

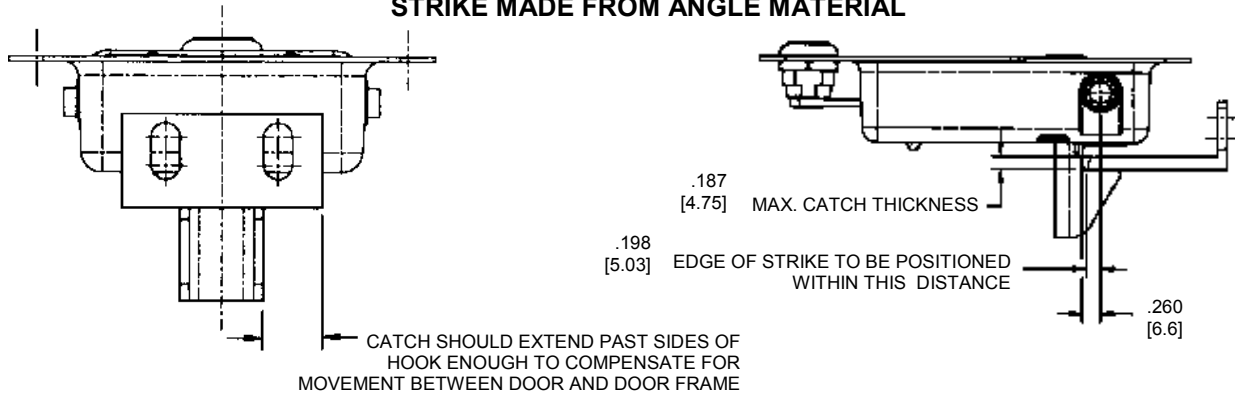


Caution: Compartment latch does not meet FMVSS 206 load requirements.

Individual part dimensions are for reference only. Refer to individual part drawings for complete dimensions, specifications, and installation procedures. Engineering assistance and application drawings are available.



RECOMMENDATIONS FOR SIZE AND POSITION OF STRIKE MADE FROM ANGLE MATERIAL



RECOMMENDATIONS FOR SIZE AND POSITION OF STRIKE MADE FROM ANGLE MATERIAL

