

060-1100 Bar Lock Latch



DESIGNED FOR:

- Securing bar locks on cargo doors for utility trailers and travel trailers

FEATURES/BENEFITS:

- Offers modernized styling
- Easy to operate: latch accepts the handle of the bar lock by sliding into the latch hook (slam action). Release is obtained by pushing in on the finger area on the latch hook.
- Accepts bar lock handles up to .250 (12.5mm) by 1.338 (34.0mm)
- Bar lock handle covers the fasteners when locked, prohibiting access to the fasteners for security



www.trimarkcorp.com

TriMark Corporation

500 Bailey Avenue
P.O. Box 350
New Hampton, Iowa 50659
United States
Tel: 641-394-3188
Fax: 641-394-2392
1-800-447-0343
www.trimarkcorp.com



TriMark Europe

Cedar Court
Walker road
Bardon Hill
Coalville LE67 1TU
United Kingdom
Tel: +55 (0)1530 512460
Fax: +44(0)1530 512461
www.trimarkeu.com





060-1100 Bar Lock Latch

AVAILABLE:

- Lock can be keyed to match other TriMark door products with KeyOne™ Plus for a single-key system, keyed alike or provided non-locking

INSTALLATION:

- Handle is easy to install with (3) 1/4" or M6 fasteners (not supplied)
- Latch mounts on any flat surface

FINISH:

- Supplied painted in a low gloss black or cascade silver

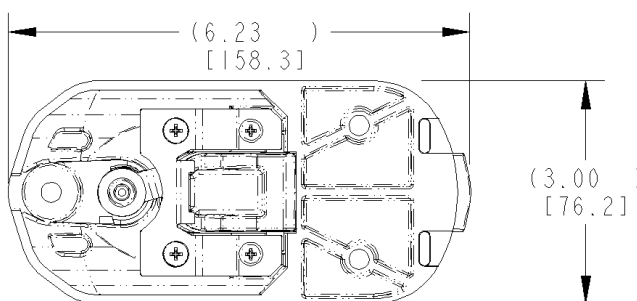
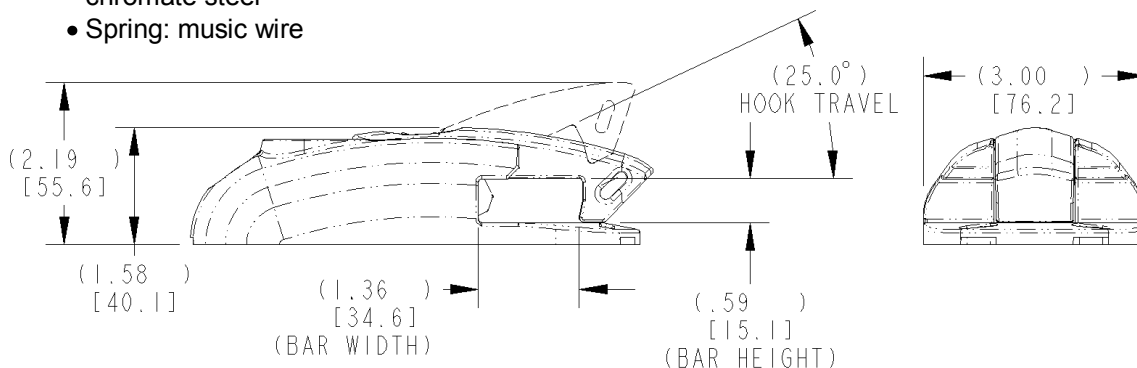
MATERIAL:

- Sturdy aluminum die cast alloy housing and latch hook
- All interior latch components: zinc plated, clear chromate steel
- Spring: music wire

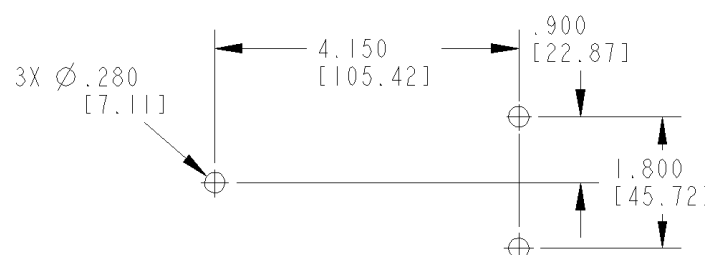
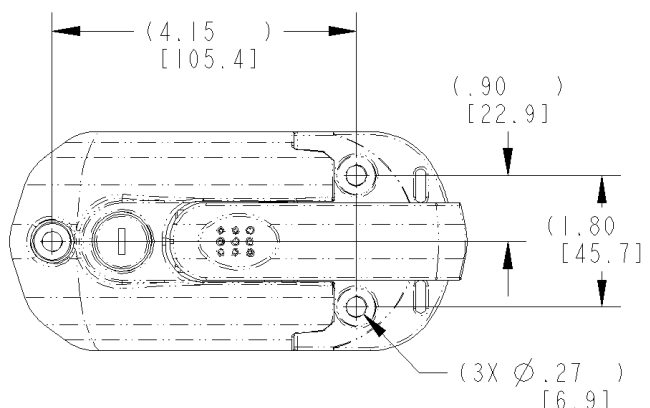
Design Patent No. D524,139

Individual part dimensions are for reference only. Refer to individual part drawings for complete dimensions, specifications, and installation procedures. Engineering assistance and application drawings are available.

The KeyOne™ system allows the operation of multiple onboard locking hardware with a single key. KeyOne™ Plus features include a reversible key for ease of operation and a larger body diameter for enhanced security. Please call for more information.



LOCKED POSITION



RECOMMENDED MOUNTING HOLE LOCATION

For more information visit
www.trimarkcorp.com