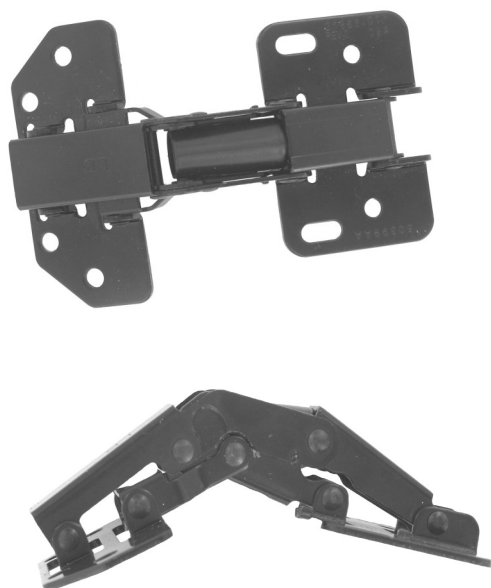


# 200-0200 Cabinet Hinge



Cabinet hinge is a concealed hinge that surface mounts for ease of installation and totally hidden applications. The concealed hinge action has a rotational axis outside of the physical door (up and out) and provides for flush doors when closed.

#### **FEATURES/BENEFITS:**

- Spring-biased over-center detent holds the door in the open position and assists in closing action



[www.trimarkcorp.com](http://www.trimarkcorp.com)

#### **TriMark Corporation**

500 Bailey Avenue  
P.O. Box 350  
New Hampton, Iowa 50659  
United States  
Tel: 641-394-3188  
Fax: 641-394-2392  
1-800-447-0343  
[www.trimarkcorp.com](http://www.trimarkcorp.com)



#### **TriMark Europe**

Cedar Court  
Walker Road  
Bardon Hill  
Coalville LE67 1TU  
United Kingdom  
Tel: +44(0)1530 512460  
Fax: +44(0)1530 512461  
[www.trimarkeu.com](http://www.trimarkeu.com)



**MATERIAL:**

- Robust, stamped steel construction

**FINISH:**

- Black e-coat

**AVAILABLE:**

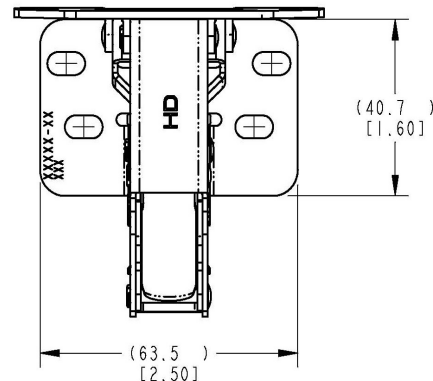
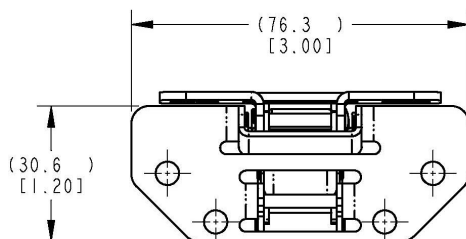
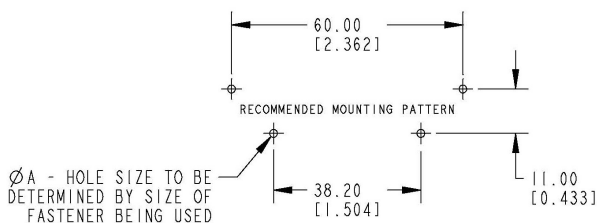
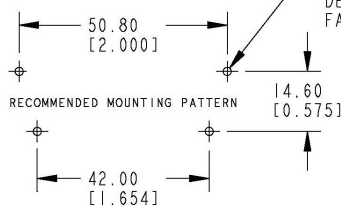
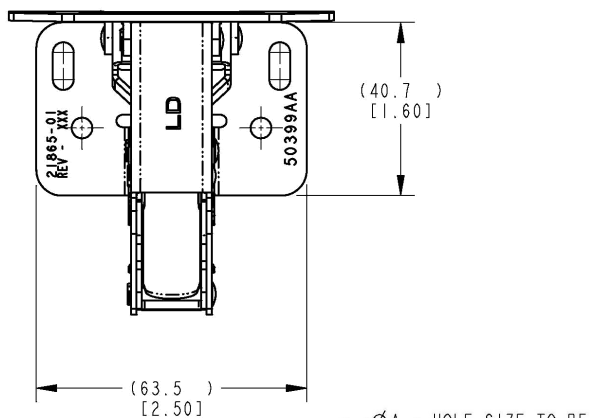
- Alternative mounting patterns
- 3 versions:
  - ◇ Light duty  $4 \pm 1$  lbf ( $1.8 \pm .45$  kgf)
  - ◇ Heavy duty 33 lbf (15 kgf)
  - ◇ Heavy duty with dampener 33 lbf (15 kgf)
- Application assistance available — please inquire

**INSTALLATION:**

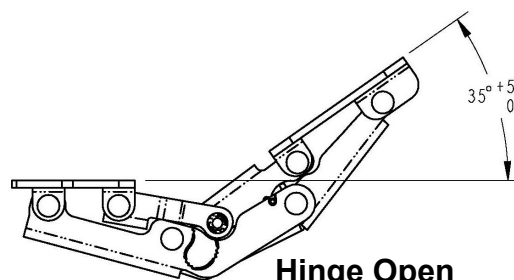
- Easy installation with (8) #8 or M4 fasteners (not included). Slotted mounting holes allow for tolerance and adjustability.

Individual part dimensions are for reference only. Refer to individual part drawings for complete dimensions, specifications, and installation procedures. Engineering assistance and application drawings are available.

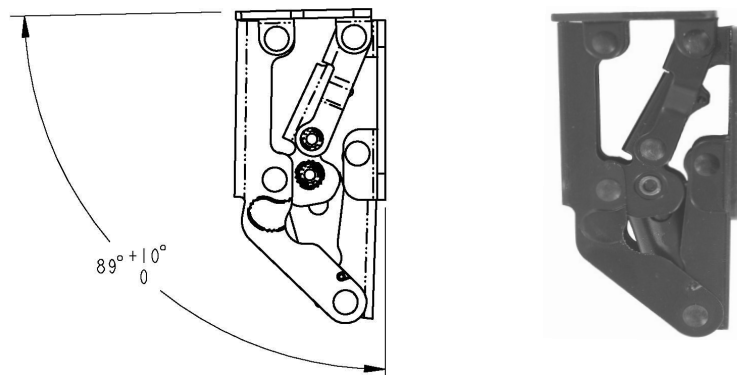
For more information visit  
[www.trimarkcorp.com](http://www.trimarkcorp.com)



Alternate Mounting



Hinge Open



Hinge Closed