

# 500-1000 e-ASK System (Electronic Access and Security Keyless-entry)



## DESIGNED FOR:

- TriMark's e-ASK systems consist of a selection of compatible components that allow for complete keyless entry for on or off-highway vehicle applications
- Incorporation into TriMark mechanical latches, handles and systems by providing keyless entry, security and convenience for access door systems through a RF remote fob electronics interface



[www.trimarkcorp.com](http://www.trimarkcorp.com)



500 Bailey Avenue  
P.O. Box 350  
New Hampton, Iowa 50659  
United States  
Tel: 641-394-3188  
Fax: 641-394-2392  
1-800-447-0343  
[www.trimarkcorp.com](http://www.trimarkcorp.com)



## TriMark Europe

Cedar Court  
Walker Road  
Bardon Hill  
Coalville LE67 1TU  
United Kingdom  
Tel: +44 (0)1530 512460  
Fax: +44 (0)1530 512461  
[www.trimarkeu.com](http://www.trimarkeu.com)



# 500-1000 e-ASK System (Electronic Access and Security Keyless-entry)

## FEATURES/BENEFITS:

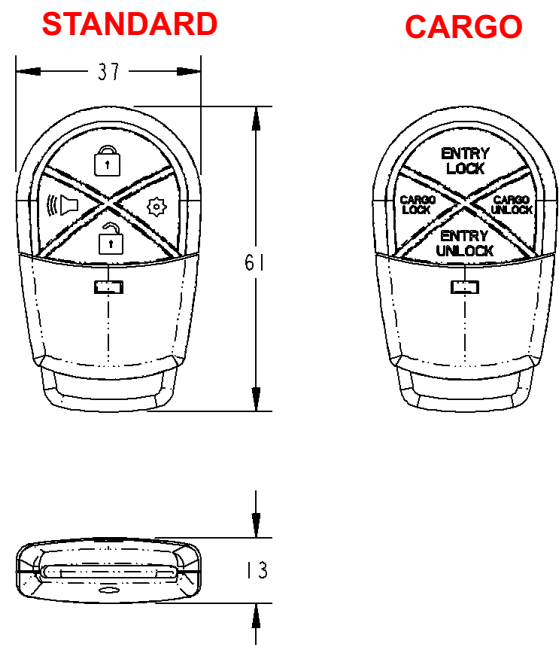
- Keyless-entry security and convenience for access door systems through an electrical interface that includes both a touch pad and remote fob transmitter for the ultimate in end user convenience and functionality
- Easy and intuitive to operate
- Rugged and durable construction
- Compliant to on-road, off-road, and industrial environmental requirements
- Increased vehicle security with multiple triggers and outputs
- I/O module with on-board locking and unlocking relays
- Can control up to 20 entry/compartments doors (expandable)
- Independent control of multiple door zones
- Staggered door control for minimized current draw
- Multiplexing communications
- Locking/unlocking confirmation
- Ignition controlled auto-locking
- Starter deactivation available for increased security
- Lighting and auxiliary output control
- Ability to provide 5 OEM definable functions from keypad, including ability to unlock one side of motor home baggage doors at a time
- 3 security system inputs (ability to sense entry door(s) and baggage door(s), and other security system devices such as glass break and motion detectors)
- 3 variable timed light activation output (porch, compartment or interior lighting)

## e-FOB

- Reliable radio frequency (RF) transmission
- High security with code hopping technology
- FCC-Part 15 compliant
- 4-button standard fob (other configurations available)
- Customized graphics possible (buttons and logos)
- Can add up to 4 fob transmitters to vehicle

## AVAILABLE:

- Standard kit make up includes: keypad, 2 pre-trained RF remote fob transmitters, RF receiver, IO module, harness connecting receiver and IO module, gasket, push button switch, and LED assembly key rings and manual
- Optional kits can include: any wiring harnesses for all connection points of system, extra relays, switches, door contacts, actuators, mounting hardware, mounting brackets, door latches, and door paddle handles
- Fob transmitters with independent entry and compartment control
- Fob transmitter with control of auxiliary features
- Vertical and horizontal keypad
- Customized wire harnesses
- Additional fob transmitters
- 2 different programming functions; standard mode, and cargo mode. Modes provide customized remote fob transmitter use. Standard mode allows for the lock/unlocking of doors plus panic mode and one auxiliary output (controls lighting, opens compartment etc.). Cargo mode allows for the lock/unlocking of main personnel doors plus independent control of many cargo/compartments doors.



**USE WITH:**

**Mechanical**

- TriMark 030-0175 Stamped Steel Compartment Latch
- TriMark 030-0185 Stamped Steel 2-Point Paddle Handle
- TriMark 030-0400 Paddle Handle
- TriMark 030-0425 Inside Bezel & Release Lever Assembly
- TriMark 030-0450 2-Point Paddle Handle
- TriMark 030-0850 Flush Mounted Paddle Handle
- TriMark 030-0860 Flush Mounted Paddle Handle With Inside Lock Knob
- TriMark 030-0900 Motor Home Entrance Door Hardware With Dead Bolt
- TriMark 030-1100 2-Point Paddle Handle
- TriMark 030-2000 2-Point Free Float Baggage Lock
- TriMark 050-0250 Single Rotor Latch & Linkage Assembly

**Electronic Products and Accessories**

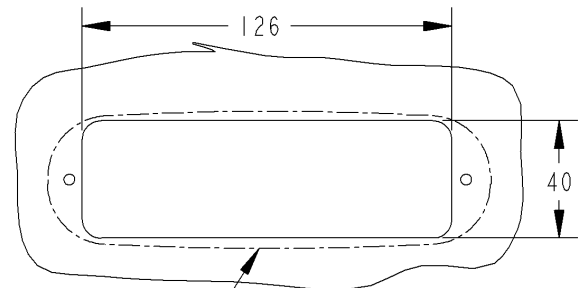
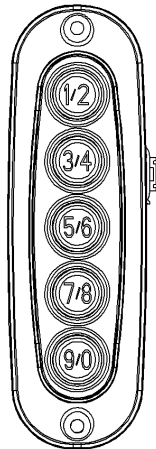
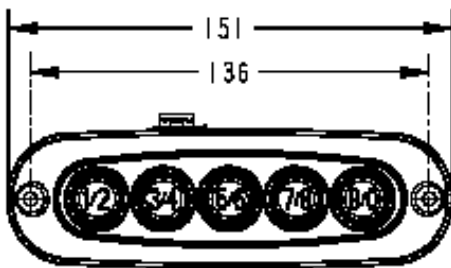
- TriMark 550-0100 Power Actuators
- TriMark 550-0200 Solenoids
- TriMark 590-0100 Wire Harnesses
- TriMark 590-0200 Door Contacts
- TriMark 590-0300 Relays
- TriMark 590-0400 Sirens
- TriMark 590-0500 Rocker Switches
- TriMark 590-0600 Plunger Switches
- TriMark supplied or existing OEM security system components (e.g. motion detectors, door-ajar detectors, glass break sensors)

**U.S. PATENT NO. 7,034,655**

**U.S. PATENT NO. 7,119,709**

Please refer to individual product codes and part drawings for complete dimensions, specifications, and installation procedures. Engineering assistance and application drawings are available.

e-ASK SYSTEM 5001000-ABC-D			
A	B	C	D
Function	Communication	e-PAD Orientation	Special Options
1 = Standard Mode	1 = Multiplex	1 = Horizontal	0 = None
2 = Cargo Mode	2 = Discrete	2 = Vertical	



**e-PAD**

- Tactile, visual, and audio feedback
- Over 3000 code combinations with tamper lock-out feature
- Lighted keypad for more effective night time usage
- Vertical and horizontal orientations
- 5 user codes can be assigned
- Multiple layer code control
- Multiple keypads integration

**RECOMMENDED KEYPAD CLEARANCE CUTOUT**

**INSTALLATION:**

- I/O module is easily installed with (4) 1/4" or M6 screws (not included) and can be mounted in a concealed location
- Keypad is easy to install with (2) #8 or M4 flat head screws (not included)
- Keypad can be installed in a wide range of locations in door - either horizontal or vertical orientation
- Standard 12 VDC power
- Easy to install and program

