



500 Bailey Avenue
P.O. Box 350
New Hampton, Iowa 50659 U.S.A.
Tel: 641-394-3188
Fax: 641-394-2392
www.trimarkcorp.com

Teaching Keypad Authority / Access Codes – Early Systems

The memory for codes is NON VOLATILE and will not be erased if power is removed.

Assign authority code:

1. Cycle (short then open) the S1 pins of I/O module learn connector (see page 3, left hand side). System will continually beep.
2. Hold the 9/0 button for 10 seconds until keypad quits beeping.
3. Press the middle (5/6) button for 5 seconds, then release after the keypad provides a confirmation beep.
4. Enter the following sequence of button presses
 - (1 / 2) first button
 - (1 / 2) first button
 - (5 / 6) middle button
 - (9 / 0) last button
 - (9 / 0) last button
5. Enter a new 5-digit authority code. Keypad will provide confirmation beeps when 5-digit authority code has been entered.
6. Re-enter your new 5-digit authority code. Keypad will provide confirmation beeps, then the keypad will exit learn mode and revert back to its default operation mode.

The authority code does not enable secure functions (lock/unlock doors, etc.). The authority code is only used to assign access codes.

Authority Code				
Digit 1	Digit 2	Digit 3	Digit 4	Digit 5

Assign access codes:

With a valid authority code (see previous), access codes can be programmed with the following instructions.

1. Press the middle (5/6) button for 5 seconds, then release after the keypad provides a confirmation beep. The backlighting LED of the keypad will flash indicating the learn mode.
2. Enter in the 5-digit authority code (see previous page). Keypad will provide confirmation beeps.
3. Press and release the button that corresponds to the access number (see below). For example, press (1/2) first button for access #1 and press (3/4) second button for access #2. During this activity you are defining 1 of 5 access numbers. A subsequent code will be assigned to this access #. The keypad will provide a confirmation beep after this single button press.
4. Enter in your new 5-digit access code (for access # established in previous step). The keypad will provide confirmation beeps.
5. Re-enter new access code. The keypad will provide confirmation beeps.

Up to 5 different access codes can be assigned at one time. As additional access codes are defined, pre-existing access codes are over-written. For example, if a new access code is assigned for access #3, the previous access #3 code is no longer valid. The following area can be used to document the access code assignment.

Access #	User Name	Digit 1	Digit 2	Digit 3	Digit 4	Digit 5
1						
2						
3						
4						
5						

TRIMPOT A— Sets Timed Dome/Porch Light Output (CW Increases Duration)

TRIMPOT B—Sets Timed Aux 1 output (CW Increases Duration)

TRIMPOT C—Sets Timed Aux 2 Compartment Light Output (CW Increases Duration)

J11 INPUTS: Inputs For RF Receiver And Vehicle Status— Pin Assignments:

- PIN 9: Power/Ground (connect to +12 or ground, depends if pins 7 and 8 are sinks or sources)
- PIN 8: Engine Running
- PIN 7: Key Inserted
- PIN 6: Panic Mode From RF Receiver
- PIN 5: * Button from RF Receiver
- PIN 4: Unlock from RF Receiver
- PIN 3: Lock from RF Receiver
- PIN 2: +12 VDC to RF Receiver
- PIN 1: Ground to RF Receiver

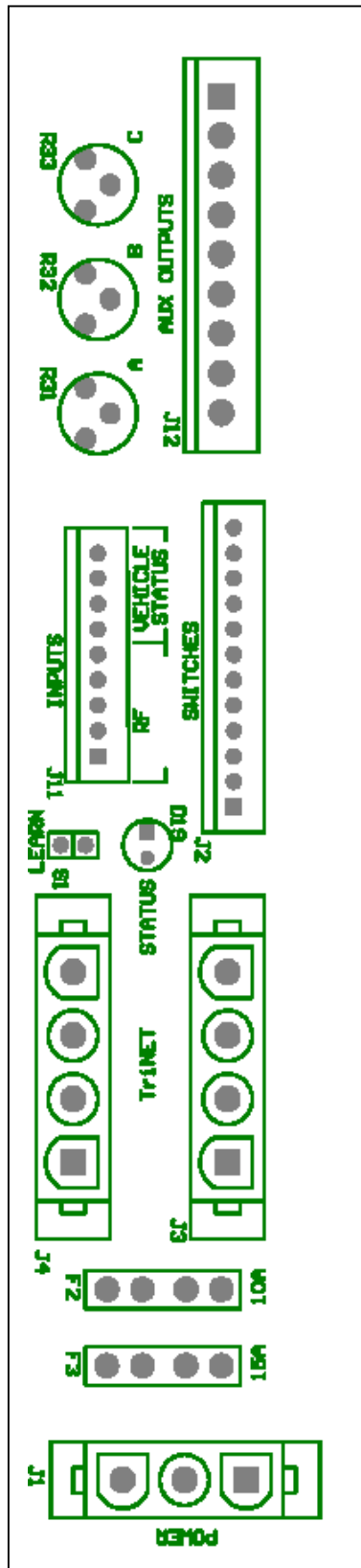
S1 LEARN INPUT: Input To Reset Keypad Codes

D19 STATUS LED

J3 AND J4 TriNet: Keypad Connectors

- PIN 4: TriNet B
- PIN 3: TriNet A
- PIN 2: Ground
- PIN 1: +12 Volts

J1 CONNECTOR: Connect to a Reliable Power Source



J12 AUX OUTPUT: Relay Driver Outputs - Pin Assignments

- PIN 1: +12 v
- PIN 2: Horn
- PIN 3: Headlight Or Marker Lights
- PIN 4: Interior Light / Porch light
- PIN 5: Auxiliary 1
- PIN 6: Auxiliary 2-Compartment Lights
- PIN 7: Entry Door Ajar
- PIN 8: Compartment Door Ajar
- PIN 9: Siren

NOTE: Pins 2-9 Sink To Ground Upon Activation. Pin 1 To Be Used As (+12 V) Opposite Side Of Relay Coil.

J2 SWITCH: (connect to ground to activate) Pin Assignments:

- PIN 12: Security System
- PIN 11: Compartment Door Ajar
- PIN 10: Entry Door Ajar
- PIN 9: Auxiliary 2 Toggle
- PIN 8: Auxiliary 1 Toggle
- PIN 7: Actuate Zone 6
- PIN 6: Depends On Dip Switch Config.
- PIN 5: Depends On Dip Switch Config.
- PIN 4: Depends On Dip Switch Config.
- PIN 3: Depends On Dip Switch Config.
- PIN 2: Depends On Dip Switch Config.
- PIN 1: Depends On Dip Switch Config.

NOTE: PINS 1-6 Provide Different Locking And Unlocking Functions. Their Relay Bank Assignment Depends On S2 DIP Switch Setting. The Connection Of Both Pin 8 (Aux 1 Toggle) And Pin 7 (Actuate Zone 6) Is Not Recommended.

F2: RED 10-amp fuse protects Trinet Communications (Power And Communication) to the keypad.

F3: BLUE 15-amp fuse protects the power actuator outputs of the I/O module.