

060-0201  
Trailer Latch  
060-0251 With Deadbolt



**DESIGNED FOR:**

- Travel trailer entrance doors
- RV baggage doors or utility trailer
- All doors with thickness of 1-1/4" to 1-1/2" (other door thicknesses available -- please inquire)
- Universal applications--either right or left handed



**TriMark Corporation**

500 Bailey Avenue  
P.O. Box 350  
New Hampton, Iowa 50659  
United States  
Tel: 641-394-3188  
Fax: 641-394-2392  
1-800-447-0343  
[www.trimarkcorp.com](http://www.trimarkcorp.com)

10002707 QM08  
10002707 TS09



ISO 9001: 2008  
ISO/TS 16949: 2009

TriMark Corporation

**TriMark Europe**

Cedar Court  
Walker Road  
Bardon Hill  
Coalville LE67 1TU  
United Kingdom  
Tel: +44(0)1530 512460  
Fax: +44(0)1530 512461  
[www.trimarkeu.com](http://www.trimarkeu.com)

427961 QM08  
427961 UM



ISO 9001 : 2008  
ISO 14001 : 2004

TriMark Europe Ltd.



# 060-0201 Trailer Latch 060-0251 With Dead Bolt

## FEATURE/BENEFITS:

- Paddle can be locked before door is shut
- Paddle is rigid when locked
- Automotive styling
- Comfortable finger access
- Inside assist for easy door closing
- Water resistant

## AVAILABLE:

- With optional built-in dead bolt (060-0251 Series)
- Reversible key for ease of operation
- With or without inside release (060-0201 Series)
- Reverse plunger for inward swinging doors (optional)
- KeyOne™ Plus



For more information visit  
[www.trimarkcorp.com](http://www.trimarkcorp.com)

## INSTALLATION:

- Requires (4) #8-32 thread forming fasteners (Available-please inquire)

## MATERIAL:

- Major components: die cast zinc alloy
- Strike plate (standard version): die cast zinc alloy
- Strike plate (optional dead bolt version): Steel or non-corrosive stainless steel
- Non-metallic plunger

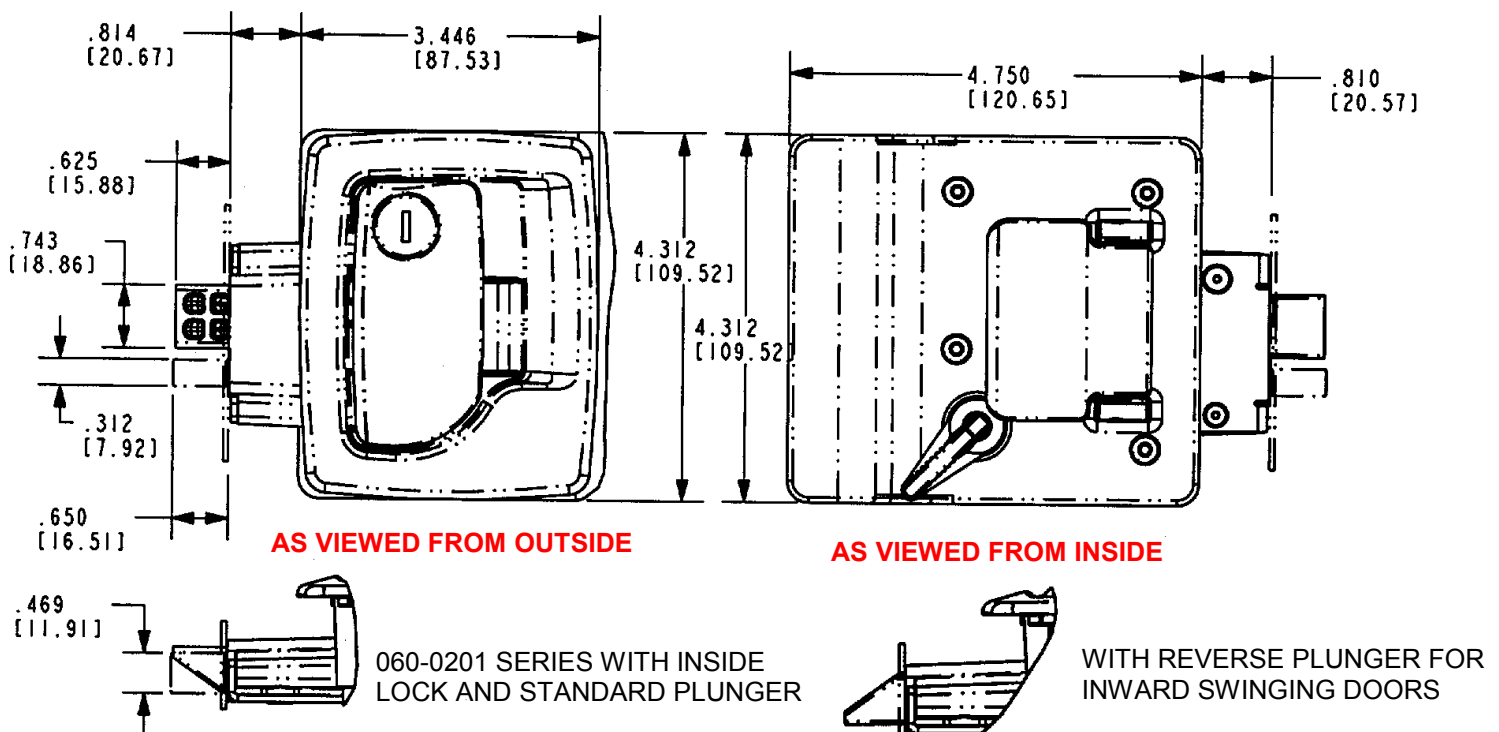
## FINISH:

- Black powder coated or white
- Strike plate (standard version): black powder coating
- Strike plate (optional deadbolt version): zinc plated

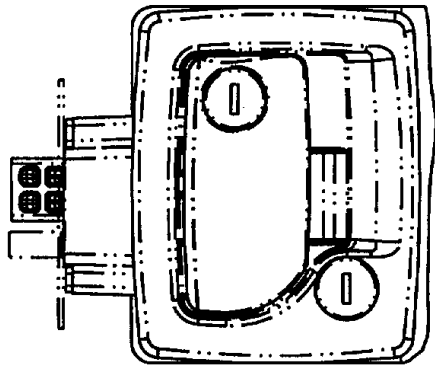
U. S. Patent No. 6,409,234 / 5,927,773  
Design Patent No. D419,421

**CAUTION:** Latch does not meet FMVSS 206 load requirements.

## 060-0201 With Inside Lock



## 060-0251 With Built-In Dead Bolt Lock

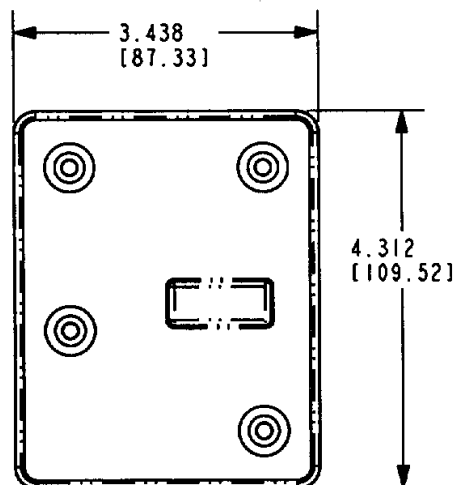
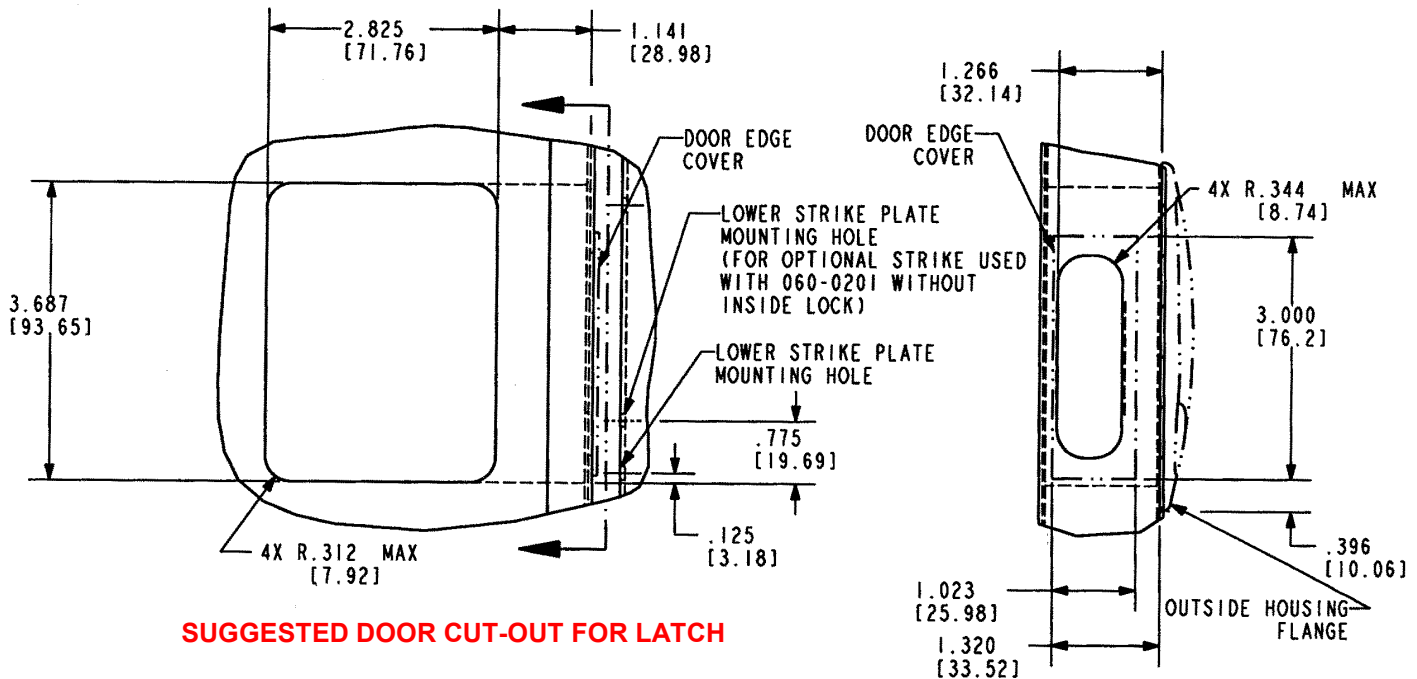


**AS VIEWED FROM OUTSIDE**

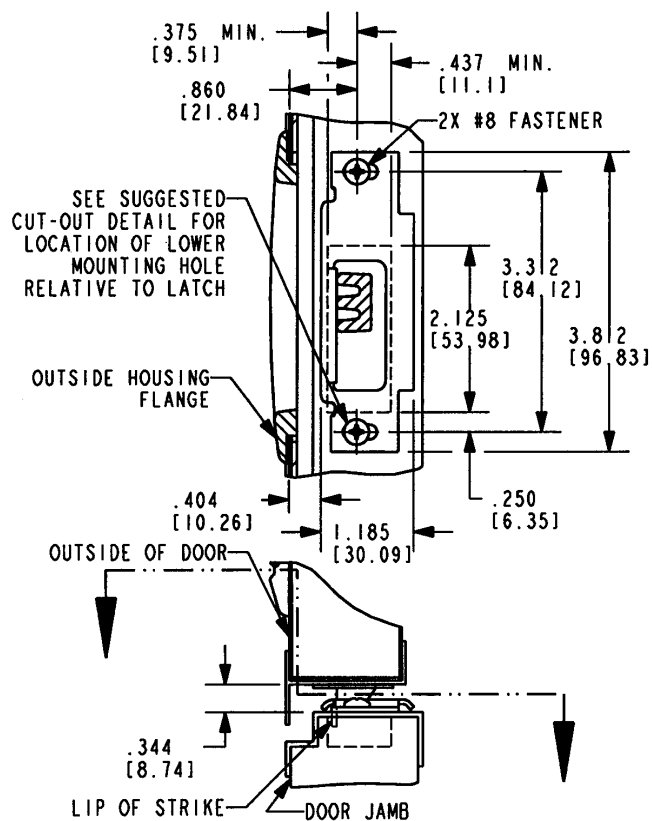
### 060-0251 DEAD BOLT FEATURES:

- Built-in dead bolt eliminates the need for an add-on residential type dead bolt
- Requires the same cut-out detail as the standard latch assembly (060-0200/0250/0201)
- Same fasteners may be used for all versions
- Dead bolt locks into the fully extended position for true dead bolt functioning
- Master keying is standard for paddle key cylinder

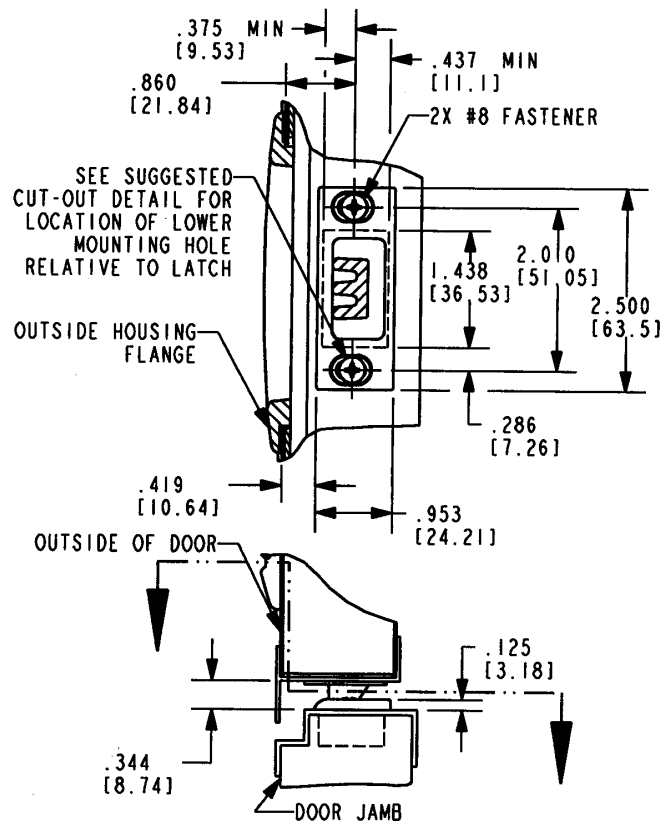
Individual part dimensions are for reference only. Refer to individual part drawings for complete dimensions, specifications, and installation procedures. Engineering assistance and application drawings are available.



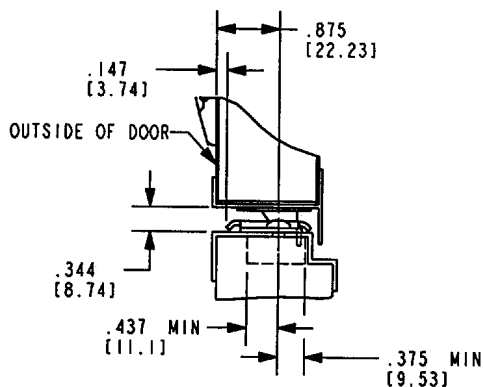
**INSIDE PLATE USED WITH 060-0201 FOR NON-ENTRY DOOR APPLICATIONS**



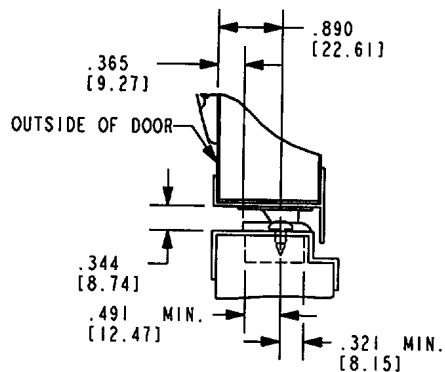
**STAMPED STEEL STRIKE PLATE FOR  
060-0201 WITH INSIDE LOCK OR 060-0251**



**DIE CAST STRIKE PLATE FOR  
060-0201 WITHOUT INSIDE LOCK**



**STAMPED STEEL STRIKE PLATE FOR  
060-0201 WITH INSIDE LOCK OR 060-0251  
WITH INWARD SWINGING DOOR**



**DIE CAST STRIKE PLATE FOR  
060-0201 WITHOUT INSIDE LOCK  
WITH INWARD SWINGING DOOR**