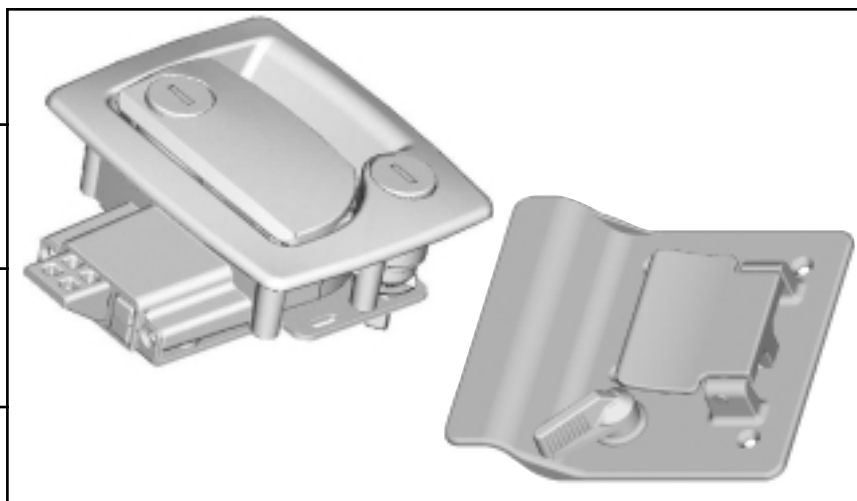
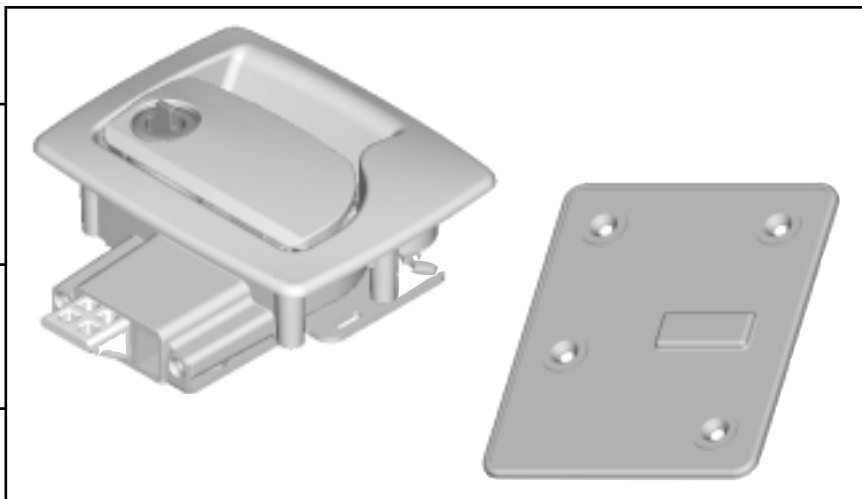


# 60-201 Trailer Latch

## 60-251 Trailer Latch With Dead Bolt



500 Bailey Avenue  
New Hampton, Iowa 50659  
Tel: 641-394-3188  
Fax: 641-394-2392  
1-800-447-0343  
[www.trimarkcorp.com](http://www.trimarkcorp.com)

ISO 9001  
United States



**TriMark Europe**

Magna Road, South Wigston  
Leicester LE18 4ZH  
United Kingdom  
Tel: +44(0)116-278-7516  
Fax: +44(0)116-277-6640

ISO 9002  
Europe



# 60-201 Trailer Latch

## 60-251 Trailer Latch With Dead Bolt

### DESIGNED FOR:

- Travel trailer entrance doors
- RV baggage doors or utility trailer
- All doors with thickness of 1-1/4" to 1-1/2" (other door thicknesses available -- please inquire)
- Universal applications--either right or left handed

### FEATURE/BENEFITS:

- Paddle can be locked before door is shut
- Paddle is rigid when locked
- Automotive styling
- Comfortable finger access
- Inside assist for easy door closing
- Water resistant

### AVAILABLE:

- With optional built-in dead bolt (60-251 Series)
- In locking or non-locking configurations
- Reversible key for ease of operation
- With or without inside release (60-201 Series)
- Reverse plunger for inward swinging doors (optional)
- KeyOne™ Plus

### USE WITH:

- TriMark 100-500 Strike Plate

### INSTALLATION:

- Requires (4) #8-32 thread forming fasteners (Available--please inquire)

### MATERIAL:

- Major components: die cast zinc alloy
- Strike plate (standard version): die cast zinc alloy
- Strike plate (optional dead bolt version): Steel or non-corrosive stainless steel
- Non-metallic plunger

### FINISH:

- Black powder coated or white
- Strike plate (standard version): black powder coating
- Strike plate (optional deadbolt version): zinc plated

### 60-251 SERIES DEAD BOLT FEATURES:

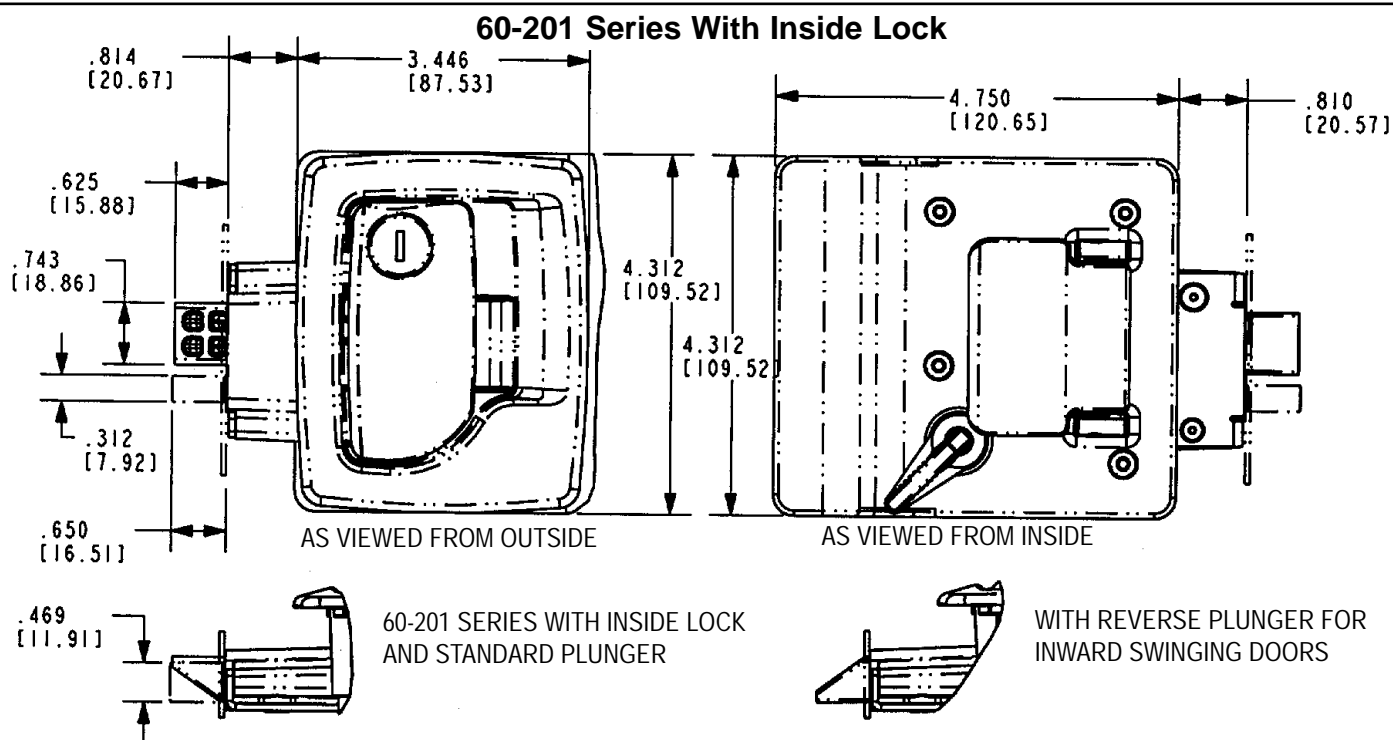
- Built-in dead bolt eliminates the need for an add-on residential type dead bolt
- Requires the same cut-out detail as the standard latch assembly (60-200/250/201)
- Same fasteners may be used for all versions
- Dead bolt locks into the fully extended position for true dead bolt functioning
- Master keying is standard for paddle key cylinder

**CAUTION: LATCH DOES NOT MEET FMVSS206 LOAD REQUIREMENTS.**

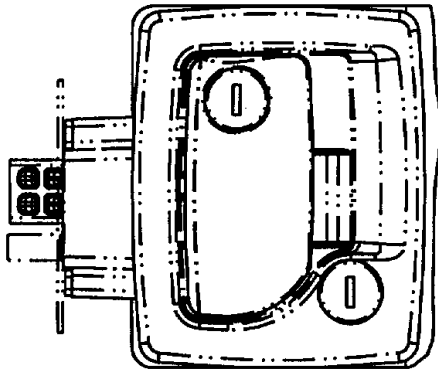
©TRI/MARK

U. S. Patent No. 5,927,773

Other U.S. & foreign patents pending



60-251 SERIES WITH  
BUILT-IN DEADBOLT LOCK

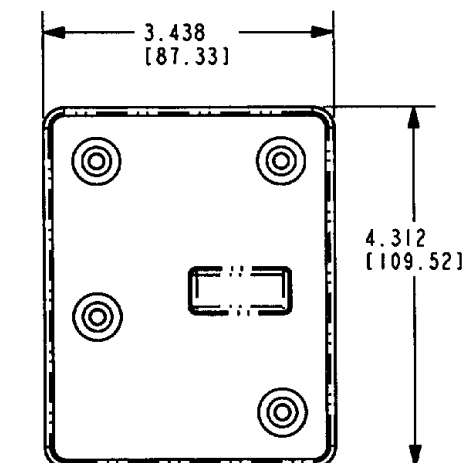
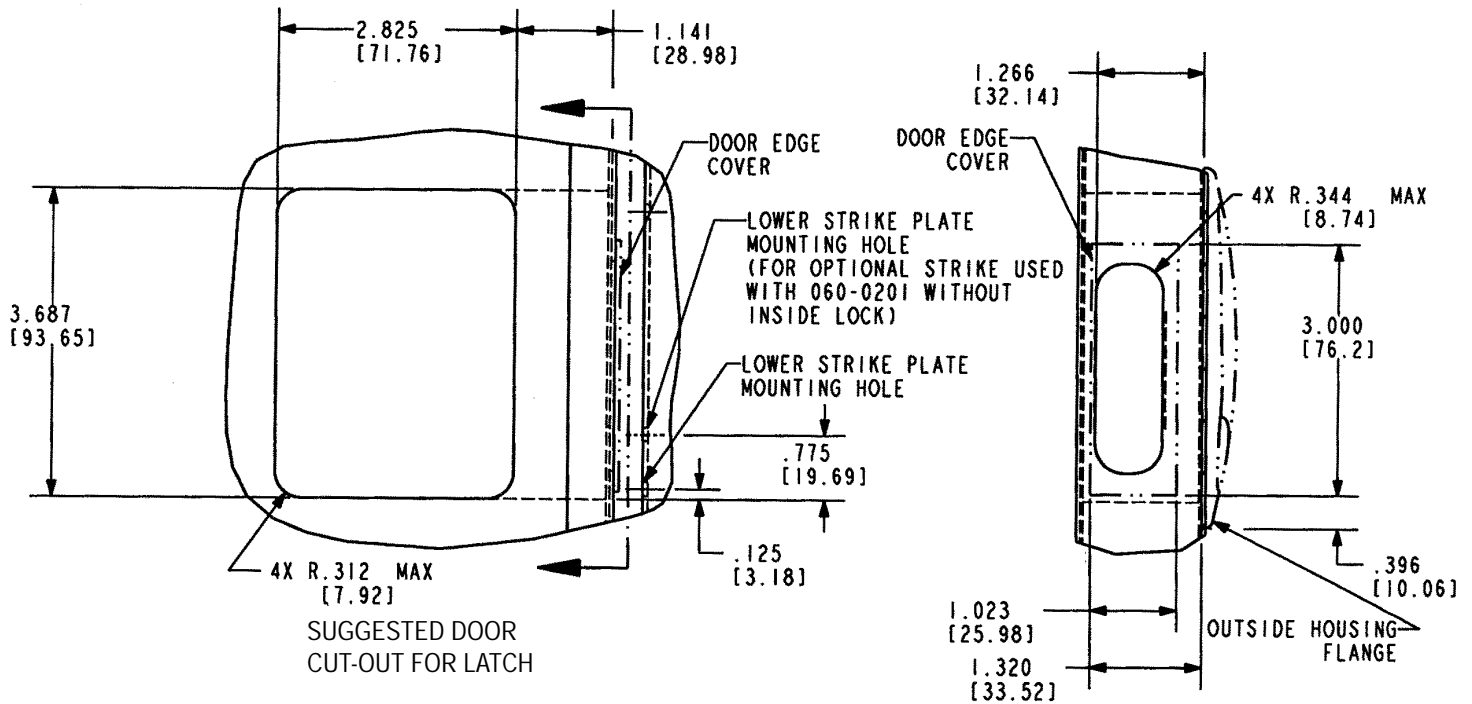


AS VIEWED FROM OUTSIDE

Individual part dimensions are for reference only. Refer to individual part drawings for complete dimensions, specifications, and installation procedures. Engineering assistance and application drawings are available.

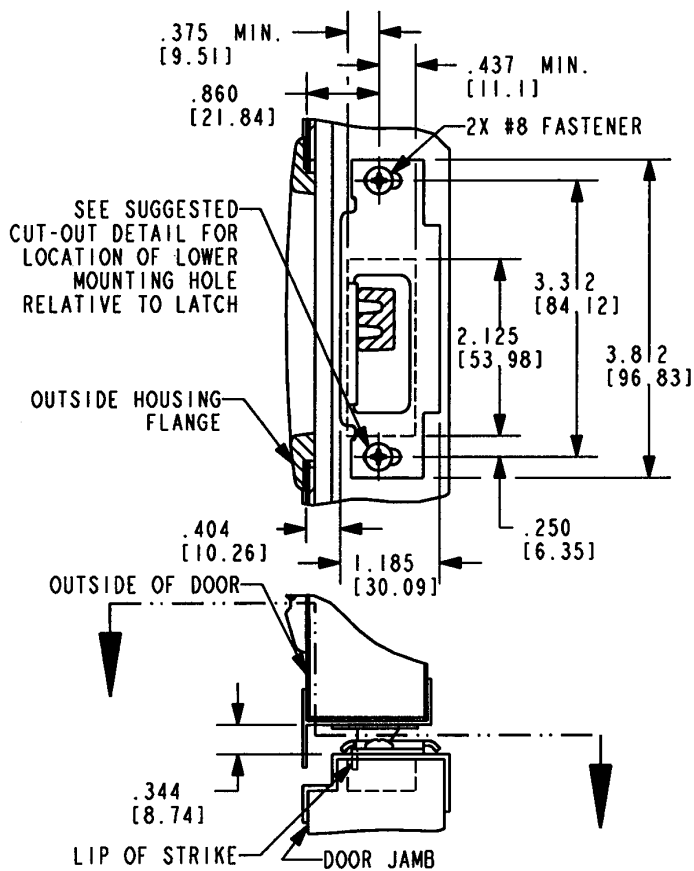


**KeyOne™ Plus is available.** The KeyOne™ system allows the operation of multiple onboard locking hardware with a single key. **KeyOne™ Plus** features include a reversible key for ease of operation and a larger body diameter for enhanced security. Please call for more information.

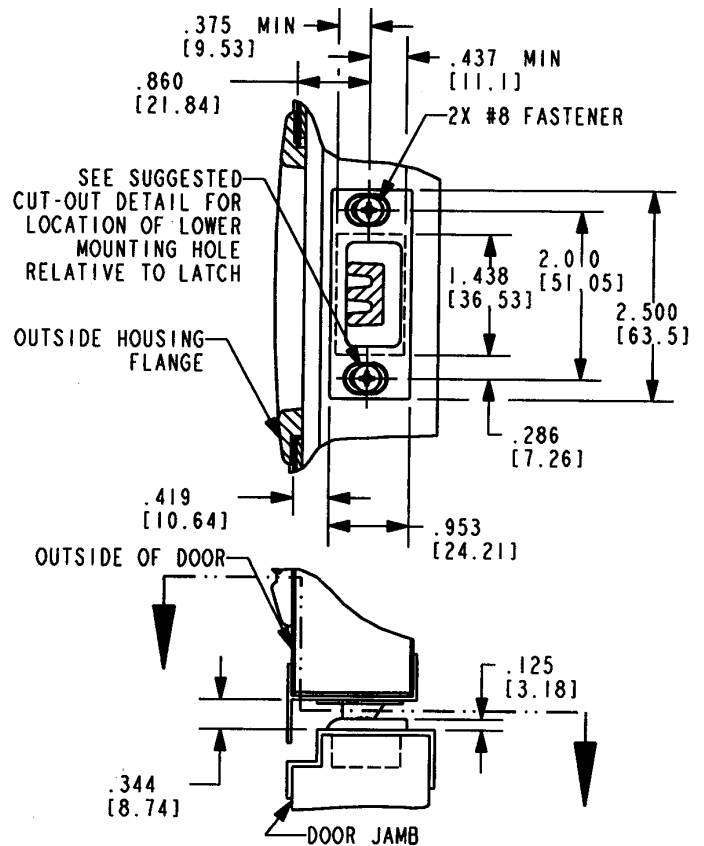


INSIDE PLATE USED WITH 60-201 SERIES  
FOR NON-ENTRY DOOR APPLICATIONS

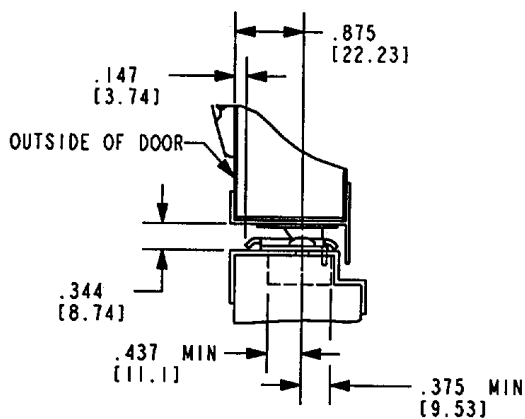
METRIC DIMENSIONS  
SHOWN IN BRACKETS



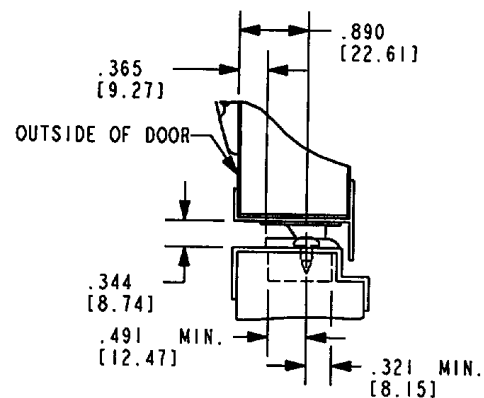
STAMPED STEEL STRIKE PLATE FOR  
60-201 WITH INSIDE LOCK OR 60-251



DIE CAST STRIKE PLATE FOR  
60-201 WITHOUT INSIDE LOCK



STAMPED STEEL STRIKE PLATE FOR  
60-201 WITH INSIDE LOCK OR 60-251  
WITH INWARD SWINGING DOOR



DIE CAST STRIKE PLATE FOR  
60-201 WITHOUT INSIDE LOCK  
WITH INWARD SWINGING DOOR