



*Open the door
to high quality heavy
duty vehicle hardware*





Products -- Setting the Standard

TriMark enjoys an excellent reputation as a leading designer and manufacturer to the on- and off-road vehicle and industrial hardware industries. We provide latching and access solutions for the agricultural, truck, construction, recreational vehicle, and enclosure markets. Our products have become the “standards” by which others are compared.

We manufacture a variety of latches, handles, striker bolts, linkage, and related components for domestic and overseas markets that are innovative, field proven and value priced.

‘Any hardware supplier can sell you components, but TriMark has built its reputation by providing custom solutions to customer needs through complete door and system solutions.’

TriMark reserves the right to make changes at any time without notice. Information contained in this catalog is intended to be the most accurate available at time of printing.

Visit our web site at: www.trimarkcn.com or www.trimarkcorp.com



使用TIPS，您将得到特利马克完整的产品目录，并且可以轻松定制任何产品。

TIPS可以查询产品，根据产品特性配置产品代码，选择兼容产品组成完整的系统，并且可以在“我的信息”区索取样品和网上询价。

可通过以下搜索方式查询产品信息：

快速搜索

- 产品代码搜索
- 关键字/产品代码搜索
- 公司信息搜索

按产品特性搜索

您可以在产品门类中根据产品属性和特殊要求进行选择方便地使您对具有相似功能、特征、材料和表面处理工艺的多个产品进行比较

按行业/系统搜索

图文搜索可以使您选择一个与您产品应用要求相关的行业和系统方便地使您找到适用于某个特定行业或系统的多个产品解决方案

按产品搜索

图文搜索可以使您从特利马克的主产品门类和次级产品门类中选择产品如果您要对要查找的解决方案有整体的想法，或是熟悉 特利马克 的产品类别，请使用此搜索方式

产品索引

本搜索可以使您从 特利马克 的主要平台中进行图文选择



Open the Door 打开五金件之门

TriMark understands the value of a great **first impression**. Often the first hand-on impression a potential owner or operator of heavy duty equipment gets is the door system. When they open the door they immediately know the **attention to detail** and level of quality they are in store for.

TriMark is one of the world's leading innovators, designers and manufacturers of heavy duty vehicle hardware. We provide a wide range of handles, latches, striker bolts, linkages and related system components of truly **exceptional quality** — our products not only set the standards for design and value, they are proven in the field time and time again.

If a standard product does not satisfy your needs, TriMark has built a **global reputation** by providing **customized solutions** and engineering expertise in a wide range of applications and equipment.

At our new facility in Xuzhou, Jiangsu, TriMark continues to build on this **matchless expertise** in China. Why not contact our experts today? We are ready to help you find the solution that fits your equipment and meets your customer's needs at a competitive price with fast response.



特利马克理解非凡的**第一触觉**意味着什么，一位潜在的客户或操作人员将会被重型机车优秀门禁系统的第一触觉所震撼。在打开车门的一刹那，他们便了解，自己已经找到那一直默默寻觅和等待的**专注细节**及高质量水平的专业团队。

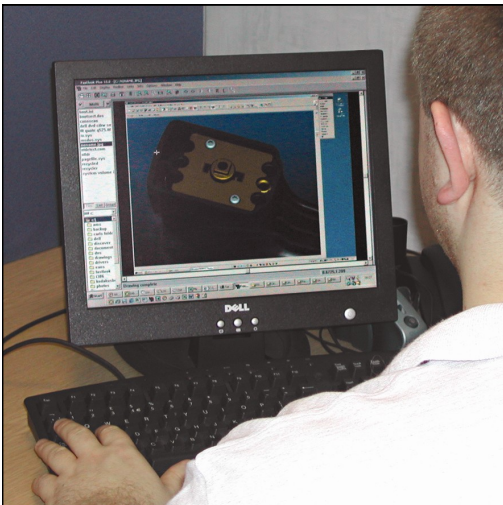
特利马克是世界领先的重型车辆的五金件的革新者、设计者和供应商。我们的产品涵盖了门锁，把手，撞针锁、联锁及其它相关配件，**质量无与伦比**。公司产品不仅确立了设计和价值的标准，而且他们在实际应用领域里已被反复得到了验证。

如果标准设计的产品不能满足您的需求，特利马克可以根据客户的需要，在各种机械应用方面，为您**量身定制**，提供系统的解决方案，这使特利马克在全球赢得了广泛的赞誉。

在中国的江苏徐州，特利马克正继续**打造并完善一支全新的专业团队**。我们正以一流的产品质量，快速的生产周期为追求目标，并渴望以最佳方案满足客户的特殊需求。

为何不今天就联系我们的门禁专家呢？我们已经准备好，对于您的机械所碰到的门禁问题，提供快速准确的最佳解决方案，不断满足并超越您的期望。

- Our application experts are at your service designing systems and products so your customer's first impression is one of excellence.
- As true partners in your product development we save you time and money, allowing your engineers to focus on the bigger picture.
- We adhere to strict data security and customer confidentiality ensuring your very best ideas remain yours.
- Quick-turn prototypes, modifications, and manufacturing mean your aggressive product introductions can be met and your project is on time to the marketplace.
- 我们的应用专家将与您共同打造全新的服务设计系统和优异的产品，二者之一将会带给您的客户非凡感受。
- 作为您产品开发的诚挚合作伙伴，我们将为您节省时间和金钱，让您的工程师专注于更广泛的市场服务。
- 我们坚持采取严格的数据安全保护和客户保密措施，以确保您最好的创意只属于您自己。
- 我们的快速反应原型，修正和生产意味着贵公司赋予竞争性产品可以被快速推出，您的项目可以及时被推向市场。



- World class tooling and manufacturing produce the highest quality product at competitive costs.
- World class test facilities provide the next best thing to “real world” validation that designs will thrive in the toughest environments.
- Worry free logistics services keep supply lines consistent in the ever changing business of equipment manufacturing .
- Long term relationships guarantee we will be here far into the future to help your company succeed.
- 世界领先的设备和制造工艺，创造出高质量、价格合理的产品。
- 世界领先的检测设施将提供最过关的产品给“真实世界”，以供验证，这些设计将经受得住最严酷环境的考验。
- 快捷无忧的物流服务持续保证供应链可以在日新月异的机械制造行业中畅通无阻。
- 长期的战略伙伴关系，标志着我们将与您共建美好的未来。

KeyOne™ Plus 专利项目

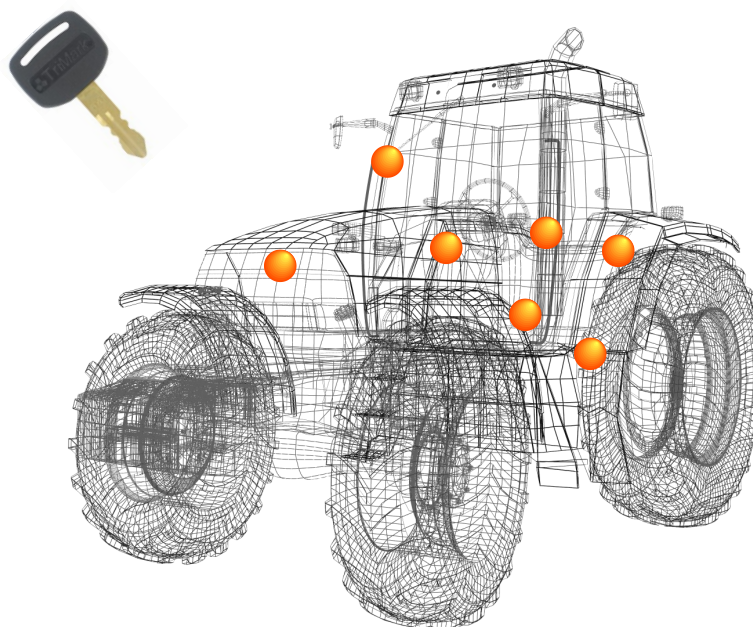
TriMark's patented single key system, **KeyOne™ Plus** is designed to give a high level of security utilizing a common key cylinder across a wide range of system components.

The reversible key is offered with single and multiple codes. Where multiple codes are used, a master key is available for workshop and field servicing. Customizing or branding of the key can be offered by over-molding the key head to your design.

Key cylinders can be supplied pre-installed by TriMark or fitted by the vehicle manufacturer at any stage on the production line.

This means inventory can be reduced by stocking components without key cylinders which can be added later to the customer's specific needs.

- **Ignition Switch**
点火开关
- **Operator Doors**
驾驶室门
- **Tool Box**
工具箱
- **Hood**
机罩
- **Fuel Cap**
油箱盖
- **Compartments**
厢门
- **Battery Compartment**
电瓶箱



特别推荐——特利马克专利单独钥匙系统 **KeyOne™ Plus**，此设计是利用一个普通的锁芯贯穿于广泛的系统零组件中，从而确保机械使用的高安全性。

这把双面的钥匙拥有单个代码和复合代码。当使用复合代码时，一把主钥匙可以在车间和维修区域使用。并且，按照客户的特殊要求和设计，为您定制锁头，以展示您的公司品牌和标志。

锁芯可以在特利马克公司提前安装，也可以在设备制造商的任何一个阶段的生产线上安装。锁芯可以在稍后的阶段进行安装，无形之中减少您零部件的库存。

Table of Contents

Latches

Page

Two-Rotor

050-0100 Two-Rotor Latch.....	10
050-0103 Two-Rotor Latch 2-Position Intertrip.....	11
050-0107 Two-Rotor Latch With Coaxial Trip	11
050-0110 Two-Rotor Single-Position Latch.....	11

Single-Rotor

050-0200 Slimline Rotary Latch.....	12
050-0204 Slimline Latch With Inline Trip Lever	13
050-0210 Slimline Rotary Latch Single-Position.....	13
050-0400 Floating Striker Single Rotor Latch.....	14
050-0500 Single Rotor Mini-Latch	15
050-0600 Single Rotor Compartment Latch	16
050-0700 12mm Single Rotor Latch	17
050-0710 Direct Push Button/Remote Inside Release	17
050-1200 Single Rotor Panel Latch	18
050-1300 Slam Latch	19

Sliding Bolt

060-0100 Plunger Bolt.....	20
060-0500 Plunger Bolt.....	21
060-0901 Low Profile Plunger Bolt	22

Pin Type, Over-Center

090-0520 Window Hold-Open	23
130-0100 Dual Release Door Hold-Open	24
130-0110 Single Release Door Hold-Open.....	25



050-0100



050-0500



050-0600



050-0700



050-1200



060-0901



130-0100



090-0520

Handles

Page

Paddle

030-0175 Stamped Steel Compartment Latch.....	26
030-0185 Stamped Steel 2-Point Paddle Handle	27
030-0200 Paddle Handle	28
030-0250 Paddle Handle With Inside Release Lever.....	28
030-0500 Pivoting Catch Compartment Latch.....	29
030-0550 Heavy Duty Pivoting Catch Compartment Latch	30
030-0800 Flush Mounted Paddle Handle	31
030-0825 Flush Mounted Paddle Handle With Inside Release Lever	32
030-0850 Flush Mounted Paddle Handle (FMVSS 206)	33
030-1200 Round Paddle Handle.....	34
030-1400 Paddle Handle	35
030-1425 Inside Bezel & Release Lever Assembly	36
030-1450 Two-Point Paddle Handle.....	37
030-2300 Wedge Paddle Handle	38
060-0460 EZ Access Baggage Door Lock.....	39
060-0475 Flush Baggage Door e-LOCK.....	40
060-0800 Slam Action Paddle.....	41

Pull Type

020-0700 Flush Pull Handle.....	42
020-0800 Surface Mounted Pull Handle.....	43
020-0850 e-LOCKING Pull Handle	44

Push Button

040-0600 TriMount Push Button Handle	45
040-1400 Push Button Center Control	46



030-0175



030-0250



030-0500



030-0850



030-1200



030-1400



030-1425



060-0460



Handles Page

Rotating T & L

010-0100 Release Lever.....	47
010-0200 Non-Locking L-Handle	48
010-0300 Locking L-Handle	49
010-0600 Flush Mounted Pop-Up T-Handle	50
010-0700 Light Duty Compartment Latch.....	51

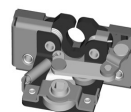
Linkages Page

Bellcrank Mechanism

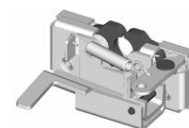
050-0150 Two-Rotor Latch & Release Linkage.....	52
---	----

Inside Release Lever

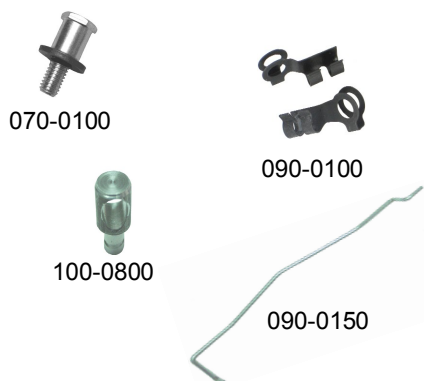
050-0170 Two-Rotor Latch With Bellcrank Linkage	52
---	----



050-0150



050-0170



Accessories Page

070-0100 .500 (12.7mm) Diameter Striker Bolt.....	53
070-0200 .675 (17.1mm) Diameter Striker Bolt.....	53
070-0300 .375 (9.5mm) Diameter Striker Bolt.....	54
070-0400 12mm Diameter Striker Bolt.....	54
100-0410 Cage Nut.....	55
090-0100 Rod Clips	56
090-0150 Rods	56
100-0800 Rod Collars	56

Miscellaneous Page

e-ASK Systems	57
---------------------	----



West Alloy Products Page

Heavy Duty Anti-Burst Latch Assembly.....	60
Anti-Burst Interior Latch.....	60
Exterior Push Button Handle Assembly	61
Exterior Pull Handle	61
Over-Center Window Stay.....	62
Over-Center Window Stay.....	62
Over-Center Window Stay.....	63
Over-Center Window Latch Assembly	63
Window Handle Assembly.....	64
Window Lock	64
Door Retainer Catch	65
Door Retainer Catch	65
Grab Handle	66
Compression Locks.....	66
Complete Lock Assemblies	67
Hinge Assembly.....	67
General Purpose Clamp.....	68
Striker Pins	68

050-0100 Two-Rotor Latch

This versatile two-rotor latch is designed for medium to heavy-duty applications for on or off-highway entrance doors, compartments and access panels. It features a variety of trip lever and mounting axles for ease of mounting and applications and is FMVSS 206 compliant.

- Door thicknesses of 1-7/8" (47.6mm) or greater
- Door weights of 50-200 lbs (23-91 kg)
- Door seal pressures of 50-150 lbs (23-68 kg) (suggested for best results)

AVAILABLE:

- In left or right hand configurations (right hand shown)
- With (4) 1/4-20 UNC or M6 X 1 threaded axles
- With trip lever options
- Straddle mount option

INSTALLATION:

- Four 1/4-20 UNC grade 5 or M6 X 1 class 8.8 or better fasteners are required (not included)
- Tighten to the fastener manufacturers' recommended torque value, however, do not exceed 120 in-lbs (13.3 N-m)
- Fastener mounting holes diameter should not exceed .281" (7.1mm)



FINISH:

- Zinc plated, clear chromate steel components

MATERIAL:

- Internal latch components: heat treated, smooth edge stamped steel
- Case halves: high strength steel
- Springs: non-corrosive stainless steel

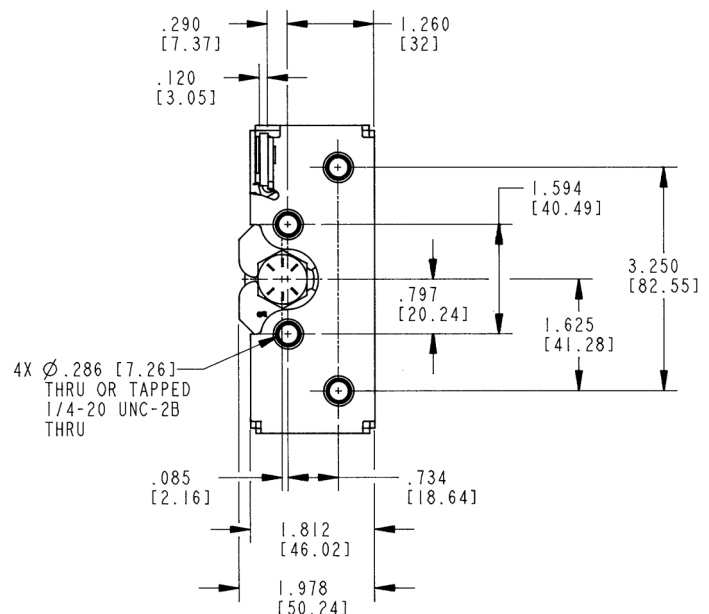
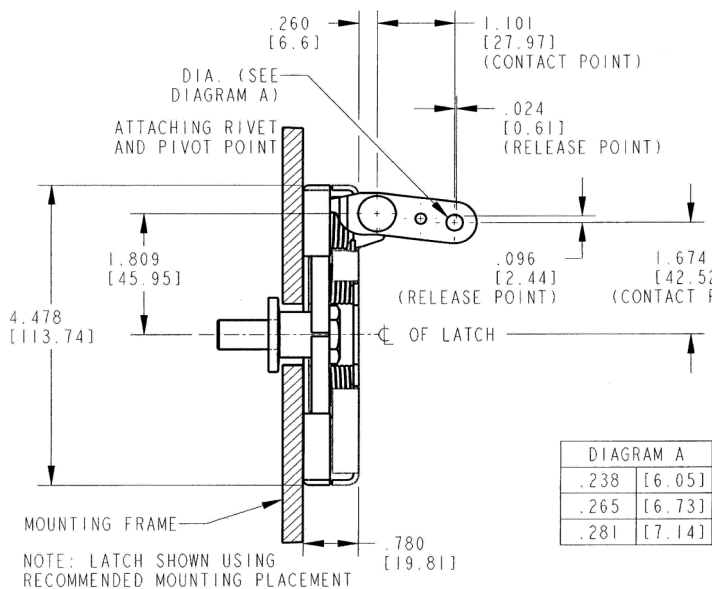
INTERNAL LUBRICATION

- Oven-cured dry lubricant is applied at factory on all critical moving parts

NOTE: Two position, double rotor latches comply with FMVSS 206 in primary and secondary latching positions when tested with approved TriMark FMVSS 206 compliant striker bolts in accordance with SAE J839.

For more information visit
www.trimarkcn.com or
www.trimarkcorp.com

050-0100 Two-Rotor Latch		
Part Number	Handing	Description
11450-16	Right	Through Axle, Conventional L-Shaped Trip
11449-16	Left	Through Axle, Conventional L-Shaped Trip
18611-01	Right	M6 Axle, Conventional 2-Point
18610-01	Left	M6 Axle, Conventional 2-Point
16296-01	Right	M6 Axle, Conventional L-Shaped, Offset Slot
16297-01	Left	M6 Axle, Conventional L-Shaped, Offset Slot
12180-16	Right	M6 Axle, Finger Release
12181-16	Left	M6 Axle, Finger Release



Other 050-0100 Two-Rotor Latch

DESIGNED FOR:

- Medium to heavy weight doors for on or off-highway applications
- Applications where it is desirable to have the release mechanism in-line with the latch (050-0103 Two-Rotor Latch 2-Position Intertrip)
- Applications where it is desirable to provide additional support to the trip lever (050-0107 Two-Rotor Latch With Coaxial Trip)
- Applications where it is desirable to have a single position rotary latch (050-0110 Two-Rotor 1-Position Latch)
- Door thicknesses of 1-7/8" or greater (47.6mm)
- Door weights of 50-200 lbs. (23-91kg)
- Door seal pressures of 50-150 lbs. (23-68kg) (suggested for best results)

AVAILABLE:

- In left or right hand configurations
- With (4) 1/4-20 UNC, M6 X 1 threaded axles or .286" (7.3mm) diameter "thru" axles
- With trip lever options
- With a torsion return spring (050-0107)
- Straddle mount option (050-0110)

FINISH:

- Zinc plated, clear chromate steel components

MATERIAL:

- Internal latch components: heat treated, smooth edge stamped steel
- Case halves: high strength steel
- Springs: non-corrosive stainless steel

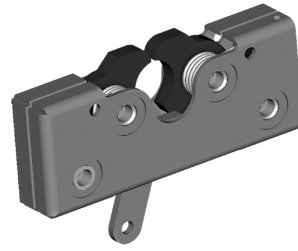
INTERNAL LUBRICATION:

- Oven-cured dry lubricant is applied at factory on all critical moving parts

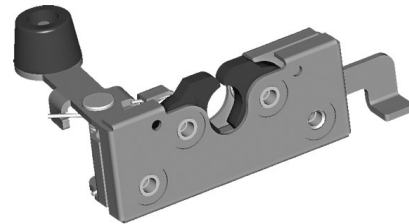
INSTALLATION:

- Four 1/4-20 UNC grade 5 or M6 X 1 class 8.8 or better fasteners are required (not included)
- Tighten to the fastener manufacturers' recommended torque value, however, do not exceed 120 in-lbs. (13.3 N-m)
- Fastener mounting holes diameter should not exceed .281 (7.1 mm)

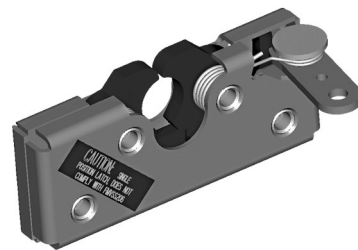
For more information visit
www.trimarkcn.com or
www.trimarkcorp.com



050-0103 Two-Rotor Latch 2-Position Intertrip		
Part Number	Handing	Description
15276-01	Right	M6 Axle, Direct Release, Straight
13686-01	Left	M6 Axle, Direct Release, Straight
14499-01	Right	M6 Axle, Direct Release, L-Shaped
11498-01	Left	M6 Axle, Direct Release, L-Shaped



050-0107 Two-Rotor Latch With Coaxial Trip		
Part Number	Handing	Description
16527-01	Right	M6 Axle, Straight Trip, With Knob
18573-01	Left	M6 Axle, Straight Trip, With Knob



050-0110 Two-Rotor Single-Position Latch		
Part Number	Handing	Description
15507-01	Right	Single Position, 2-Rotor, Straight Trip

CAUTION: Single position, double rotor latches do not comply with FMVSS 206 requirements.

Latch with 2 position rotors complies with FMVSS 206 in primary and secondary latching positions when tested with approved TriMark FMVSS 206 compliant striker bolts in accordance with SAE J839

050-0200 Slimline Rotary Latch

This compact single rotor latch is designed for light to medium applications for on or off-highway entrance doors, compartments and access panels. It features a variety of trip levers and mounting axles for ease of mounting and applications and is FMVSS 206 compliant.

- Door weights up to 75 lbs (37 kg)
- Door seal pressures of 20-25 lbs (9-11 kg) recommended for best results (not to exceed 50 lbs [23 kg])
- Visible surface installation or concealed installation

AVAILABLE:

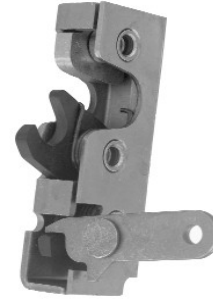
- Left or right hand configurations (left hand shown)
- With standard .265" (6.7mm) diameter "thru" axles as shown, 1/4-20 UNC threaded axles or M6 X 1.0 threaded axles

FINISH:

- Zinc plated, clear chromate steel components
- Stainless steel

MATERIAL:

- Internal latch components: heat treated smooth edge stamped steel
- Springs: non-corrosive stainless steel
- Case halves: high strength steel



INSTALLATION:

- Three 1/4-20 UNC grade 5-type or M6 X 1 class 8.8 or better fasteners are recommended
- Vertical mounting with support ramp at top is required for proper alignment and subsequent engagement of locking pawl and striker bolt
- Tighten to the fastener manufacturers' recommended torque value, however, do not exceed 120 in-lbs (13.3 N-m)

INTERNAL LUBRICATION:

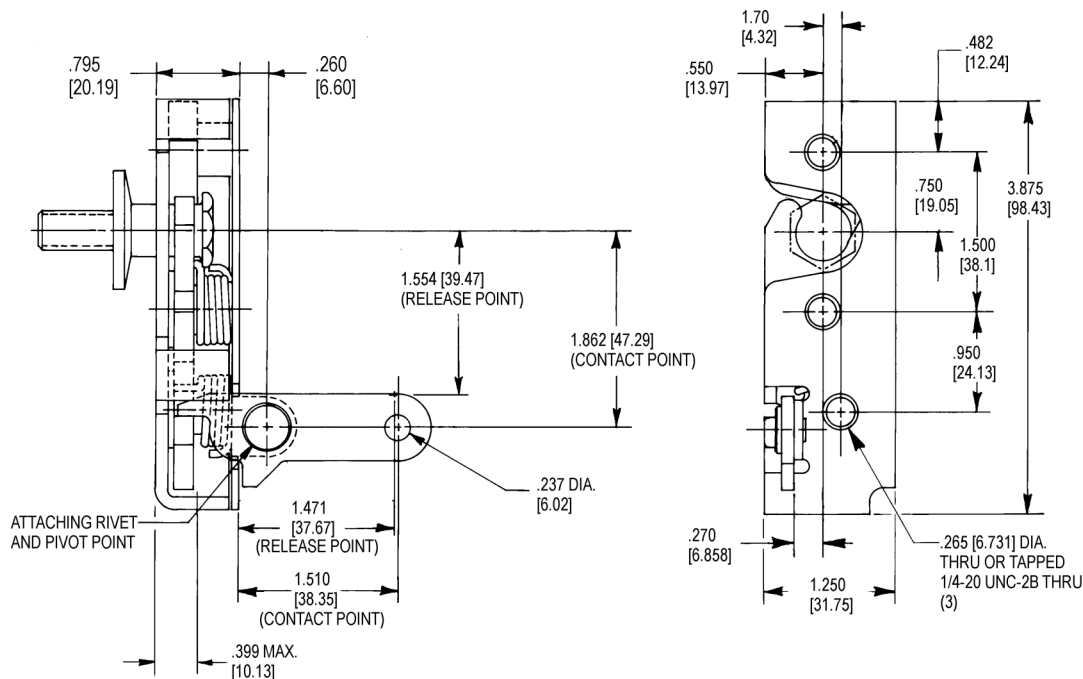
- Oven-cured dry lubricant is applied on all critical moving parts

NOTE: Two position rotor latches comply with FMVSS 206 in primary and secondary latching positions when tested with approved TriMark striker bolts in accordance with SAE J839.

U.S. Patent No. 7,156,430 and 7,320,488

050-0200 Slimline Rotary Latch		
Part Number	Handing	Description
11665-16	Right	Through Axle, Conventional 2-Point Trip
11664-16	Left	Through Axle, Conventional 2-Point Trip

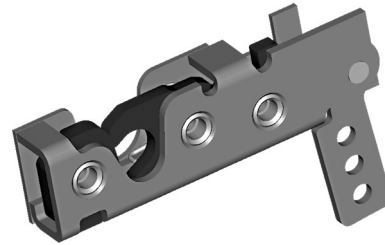
For more information visit
www.trimarkcn.com or
www.trimarkcorp.com



Other 050-0200 Slimline Latches

DESIGNED FOR:

- Thinner, light or medium weight door applications requiring resistance to dust and vibration
- Door weights up to 75 lbs. (34 kg)
- Door seal pressures of 20-25 lbs. (9-11 kg) recommended for best results. Not to exceed 50 lbs. (23 kg)
- Visible surface installation or concealed installation
- Applications where it is desirable to have the release mechanism in line with the latch (050-0204)
- Applications where it is desirable to have a single position rotor latch (050-0210)



AVAILABLE:

- Left or right hand configurations
- With standard .265 (6.7mm) diameter "thru" axles as shown, 1/4-20 UNC threaded axles or M6 x 1.0 threaded axles

050-0204 Slimline Latch With Inline Trip Lever		
Part Number	Handing	Description
13845-02	Right	M6 X 1.0, Straight Trip
13844-02	Left	M6 X 1.0, Straight Trip

FINISH:

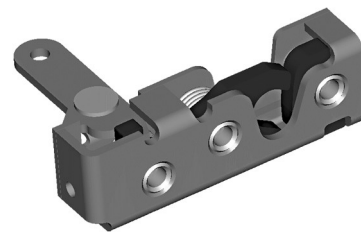
- Zinc plated, clear chromate steel components

MATERIAL:

- Internal latch components: heat treated smooth edge stamped steel
- Springs: non-corrosive stainless steel
- Case halves: high strength steel

INSTALLATION:

- Three 1/4-20 UNC grade 5-type or M6 X 1 class 8.8 or better fasteners are recommended
- Vertical mounting with support ramp at top is required for proper alignment and subsequent engagement of locking pawl and striker bolt
- Tighten to the fastener manufacturers' recommended torque value, however, do not exceed 120 in-lbs. (13.3 N-m)



INTERNAL LUBRICATION:

- Oven-cured dry lubricant is applied on all critical moving parts

050-0210 Slimline Rotary Latch		
Part Number	Handing	Description
14953-02	Right	M6 Axle, Straight Trip
14952-02	Left Hand	M6 Axle, Straight Trip

For more information visit
www.trimarkcn.com or
www.trimarkcorp.com

CAUTION: Single position rotary latches do not comply with FMVSS 206 requirements.

Two position rotary latches complies with FMVSS 206 in primary and secondary latching positions when tested with approved TriMark striker bolts in accordance with SAE J839.

050-0400 Floating Striker Single Rotor Latch

This robust single rotor latch is designed for medium to heavy-duty applications for on or off highway entrance doors, compartments and access panels. It features a vertical clearance rotor for high vibration applications and is available in a variety of trip levers and mounting axles for ease of mounting and applications and is FMVSS 206 compliant.

- Door thicknesses of 1-7/8" (47.6mm) or greater
- Door weights of 50-200 lbs (23-91 kg)
- Door seal pressures of up to 150 lbs (68 kg) (< 50 lbs [23 kg] suggested for best results)
- Visible surface installation or concealed inside installation

FEATURES/BENEFITS:

- Allows for $\pm .143$ (3.63) strike travel from .789
- Ideal for applications with high vibration loading and where controlled travel between the latch and strike is characteristic of the application
- Single-position rotary style latching

FINISH:

- Zinc plated, clear chromate steel components

MATERIAL:

- Internal latch components: heat treated, smooth edge stamped steel
- Case halves: high strength steel
- Springs: non-corrosive stainless steel

For more information visit
www.trimarkcn.com or
www.trimarkcorp.com

INSTALLATION:

- Four 1/4-20 UNC grade 5 or M6 X 1 class 8.8-type fasteners are required (not included).
- Tighten to the fastener manufacturers' recommended torque value, however, do not exceed 120 in-lbs. (13 N-m)
- Fastener mounting holes diameter should not exceed .281 (7.1mm)

AVAILABLE:

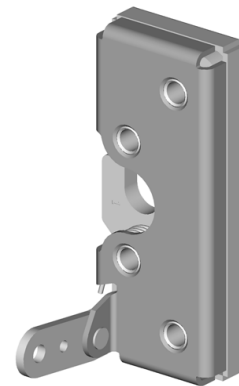
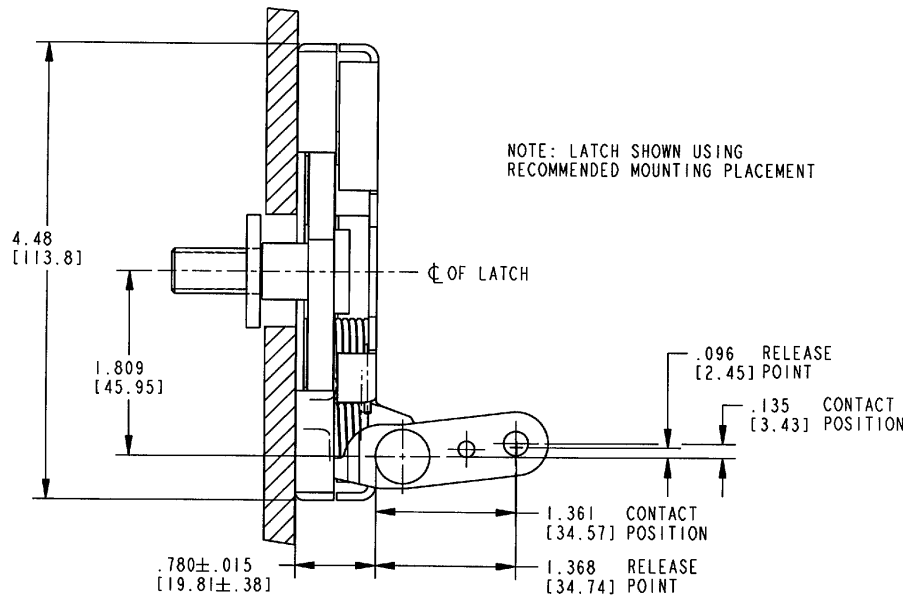
- In left or right hand configurations (right hand shown)
- With (4) 1/4-20 UNC, M6 X 1 threaded axles or .286 (7.3mm) through axles
- With trip lever options

INTERNAL LUBRICATION:

- Oven-cured dry lubricant is applied at factory on all critical moving parts

NOTE: Complies with FMVSS 206 in primary and secondary latching positions when tested with approved TriMark FMVSS 206 compliant striker bolts in accordance with SAE J839.

050-0400 Floating Striker Single Rotor Latch		
Part Number	Handing	Description
11615-01	Left	Straight Trip, Standard Mount
14293-01	Right	Straight Trip, Standard Mount



050-0500 Single Rotor Mini-Latch

Designed for small compartment and access doors where low cost slam action latching is desired. It features a single or two-position compact rotary and is available in a variety of trip levers and mounting axles for ease of mounting and applications

- Pickup box lids and cross bed tool boxes
- Light weight door applications
- RV baggage doors
- Door closing forces of 15-20 lbs. (6.8-9 kg) recommended for best results (do not exceed 50 lbs. [23 kg])
- Release efforts are approximately proportional to door closing forces

FEATURES/BENEFITS:

- Compact size
- Low cost
- Single position rotary style latching action
- Double position also available

AVAILABLE:

- Right and left hand configurations (left hand shown)
- With 1/4-20 UNC threaded axles
- Base mount
- With rod collars attached

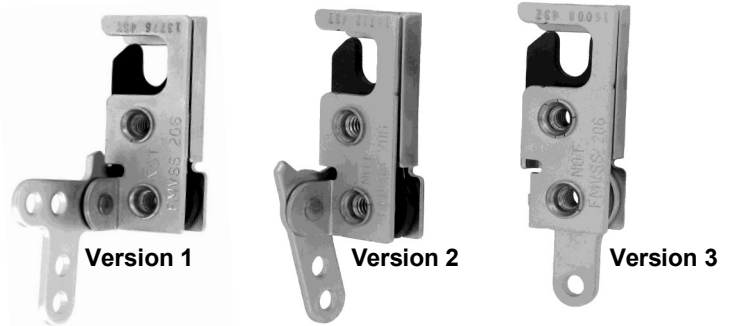
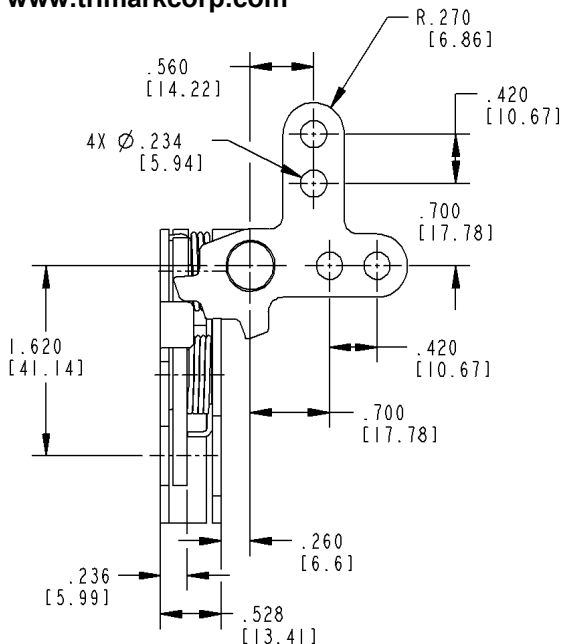
MATERIAL:

- Internal latch components and case halves: high-strength steel
- Springs: non-corrosive stainless steel

FINISH:

- Zinc plated, clear chromate
- Stainless steel

For more information visit
www.trimarkcn.com or
www.trimarkcorp.com



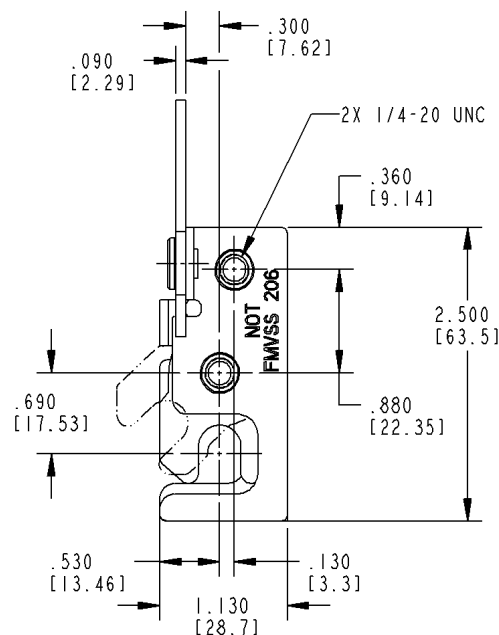
050-0500 Single Rotor Mini-Latch			
Version	Part Number	Handing	Description
1	15252-01	Right	7.3mm Through Axle Mount
2	24149-01		
3	24000-01		
1	24001-01	Left	
2	17256-01		
3	15253-01		

INSTALLATION:

- Two 1/4-20 UNC mounting fasteners (not included)
- Custom mounting brackets and release levers upon request
- Tighten to the manufacturers' recommended torque value, however, do not exceed 100 in-lbs (11.2 N-m)

NOTE: Rod collars are not intended or recommended for use in applications that require FMVSS 206 compliance or applications that have heavy or extreme striker bolt loads (> 25 lbs / 11 kg) and/or high to extreme usage (> 100,000 door cycles/life).

CAUTION: Latch does not comply with FMVSS 206 requirements.



050-0600 Single Rotor Compartment Latch

This new latch is intended for storage and compartment doors for off-road vehicles including agricultural and construction equipment. The robust construction and compact size at a very cost effective price make it a great choice for light to medium duty compartment door applications.

- Access panels and hoods for off-highway vehicle applications
- Applications where it is desirable to have a single rotor latch that offers robust construction and compact size for a very cost effective price

FEATURES/BENEFITS:

- Compact size
- Use with 12mm diameter striker or standard bar stock
- Mounts with (2) M8 X 1.25 fasteners (not included)
- Threaded axle version provides ease of installation



AVAILABLE:

- Right or left hand configurations (left hand shown)
- Single or two position rotary style latching function
- Several standard release actuators are available

INSTALLATION:

- Installed with (2) M8 X 1.25 bolts (not included)
- Tighten to the manufacturers' recommended torque value, however, do not exceed 22.2 N-m (180 in-lbs)

FINISH:

- Zinc plated, clear chromate steel components

MATERIAL:

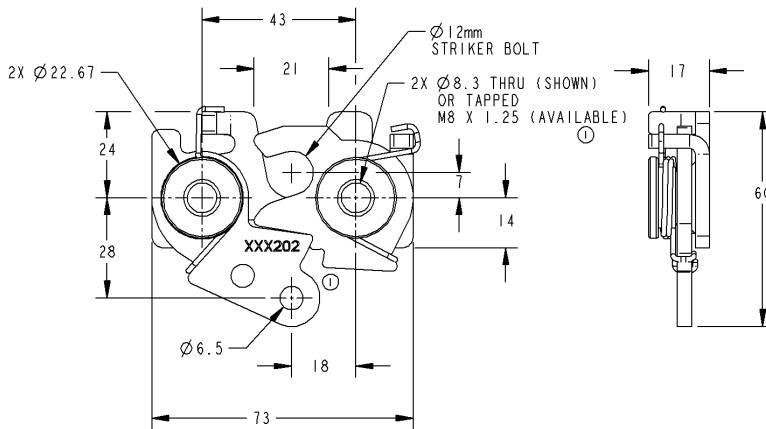
- Case and actuator: high strength steel
- Springs: non-corrosive stainless steel

CAUTION: Latch does not comply with FMVSS 206 requirements

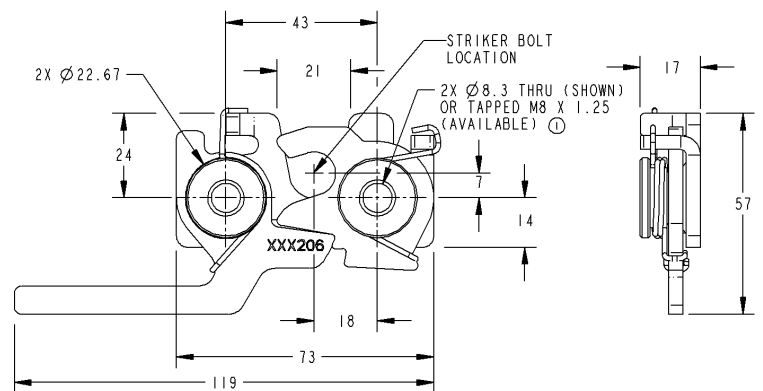
050-0600 Single Rotor Compartment Latch		
Part Number	Handing	Description
19247-01	Left	Version B Configuration
22356-01	Left	Version C Configuration
20473-01	Left	Version D Configuration
24116-01	Right	Version A configuration
22355-01	Right	Version C Configuration

The following drawings show standard versions of the 050-0600 and do not depict all of the configurations available. Please refer to the website for additional information.

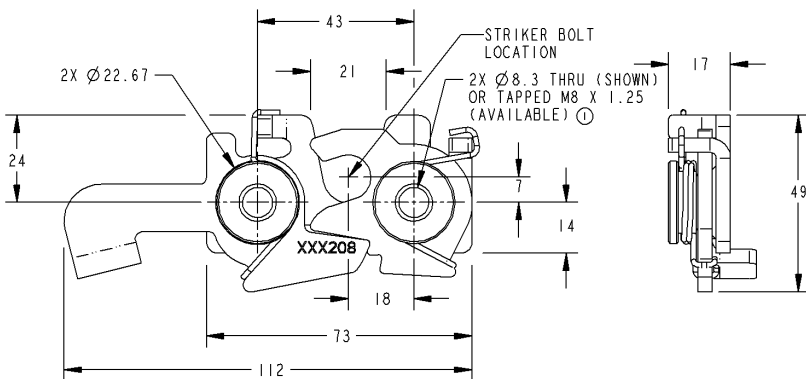
Version A



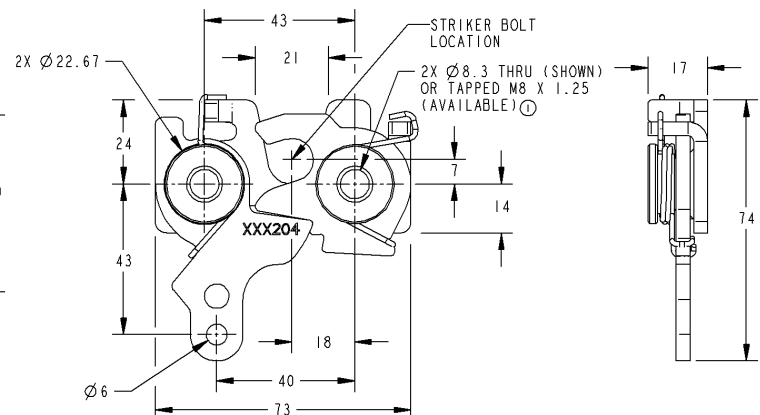
Version C



Version B



Version D



050-0700 12mm Single Rotor Latch

This compact single rotor latch is designed for use on light to medium duty operator and compartment doors for on- or off-highway applications. There are a number of variants allowing it to interface with TriMark's range of external and internal methods of activation for application flexibility.

- Operator and compartment door applications for on and off-highway vehicles
- Light to medium duty doors up to 25 kg (55 lbs.) with door seal pressures no greater than 20 kg (44 lbs.)
- 12mm diameter striker bolt

FEATURES/BENEFITS:

- Compact size and shape; allows maximum visibility and use of door space
- Four standard variants; provides application flexibility
- Black finish reduces the need for secondary painting or covers

MATERIAL:

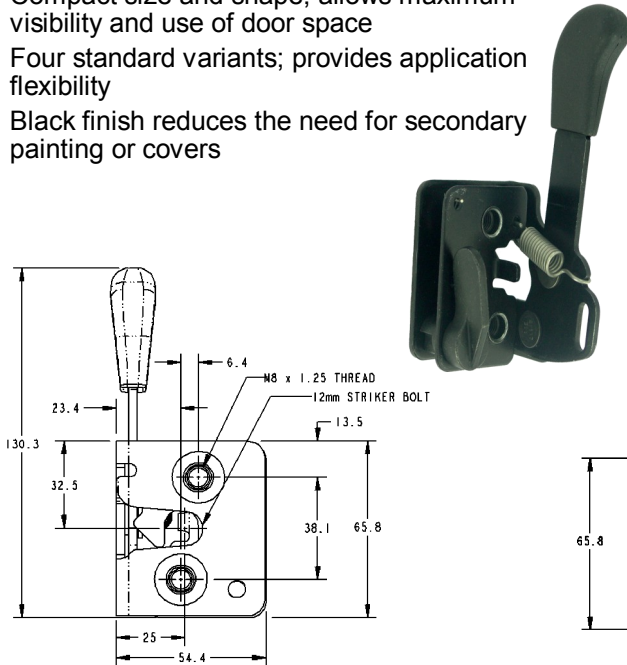
- Rotor: Heat treated steel
- Case halves: High strength steel
- Springs: Non-corrosive stainless steel
- Inside release knob: Black PVC plastic
- Push button bellcrank: Die cast zinc alloy

FINISH:

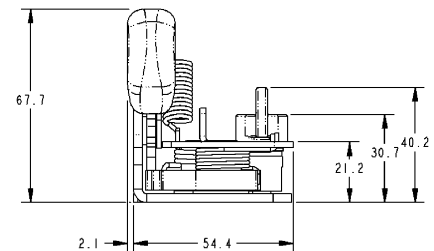
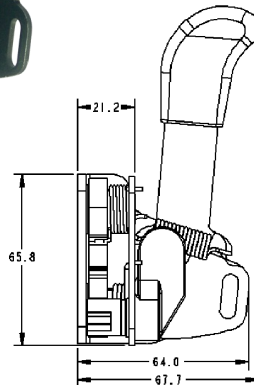
- Zinc plated steel components with black chromate

AVAILABLE:

- Versions are available to allow direct or remote actuation from exterior handles and interior release
- Standard left and right hand versions; allows use in either orientation (right hand shown)



050-0700 12mm Single Rotor Latch		
Part Number	Handing	Description
21409-01	Left	M8 Axle, Finger Inside Release, Clear Zinc
21409-02	Left	M8 Axle, Finger Inside Release, Black
21117-01	Right	M8 Axle, Finger Inside Release, Clear Zinc
21117-02	Right	M8 Axle, Finger Inside Release, Black

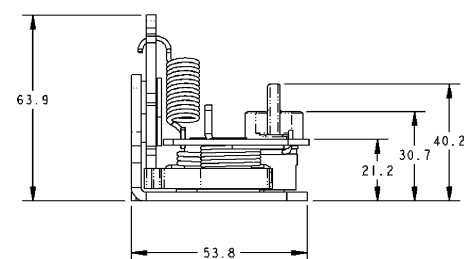
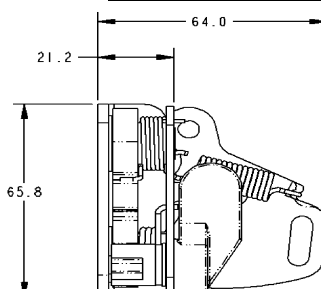
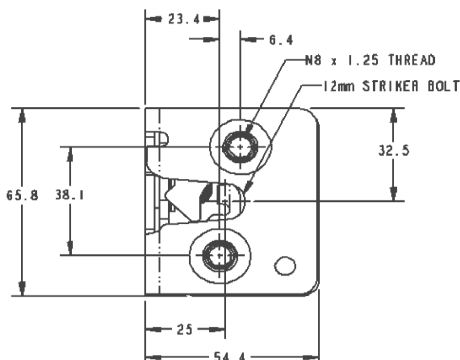


050-0710 Direct Push Button / Remote Inside Release

The 050-0710 version features an integrated bellcrank for direct push button handle release and a separate remote inside release for application flexibility.



050-0710 Direct Push Button / Remote Inside Release		
Part Number	Handing	Description
21127-02	Left	M8 Axle, Remote Inside Release, Black
21127-01	Left	M8 Axle, Remote Inside Release, Clear Zinc
21114-02	Right	M8 Axle, Remote Inside Release, Black
21114-01	Right	M8 Axle, Remote Inside Release, Clear Zinc



050-1200 Single Rotor Panel Latch

This product is designed for light to medium duty compartment doors, access panels and hoods for off-highway vehicle applications. The single rotor latch offers robust construction and compact size for a very cost effective price.

- Applications where it is desirable to have a single rotor latch that offers robust construction and compact size for a very cost effective price

FEATURES/BENEFITS:

- Compact size
- Use with 8mm diameter striker or standard bar stock
- Mounts with (2) M8 fasteners (not included)

AVAILABLE:

- Single handed configuration
- Single position rotary style latching function
- Direct or remote release actuators available
- Direct actuation - via hex drive 13mm A/F with slot
- Remote actuation - via 4.5mm diameter hole on catch

050-1200 Single Rotor Panel Latch		
Part Number	Handing	Description
21741-01	Non-handed	Standard Spring
21741-03	Non-handed	Heavy Duty Spring



INSTALLATION:

- Installed with (2) M8 fasteners (not included)
- Tighten to the manufacturers' recommended torque value
- Dual mounting faces

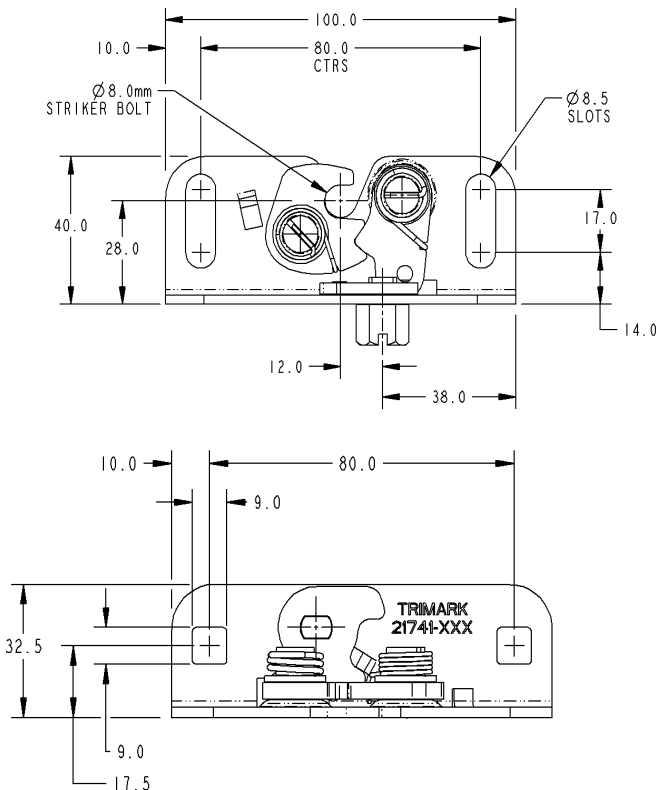
FINISH:

- Zinc plated, clear chromate steel components

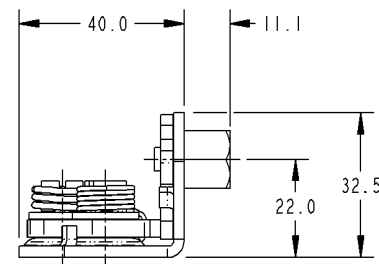
MATERIAL:

- Actuator: stainless steel
- Springs: non-corrosive stainless steel
- Rotor and catch: hardened carbon steel

CAUTION: Latch does not comply with FMVSS 206 requirements



For more information visit
www.trimarkcn.com or
www.trimarkcorp.com



050-1300 Slam Latch

TriMark's NEW 050-1300 plastic slam latch is designed to secure a variety of storage, compartment and access doors.

FEATURES/BENEFITS:

- Slam action latch is non-handed
- Small size will work in a variety of small compartments and applications
- Simple, cost-effective latch offers an alternative to standard rotary latches
- Operation - dual plungers allow the rod to enter into the latch as normal slam action, then the rods must be retracted to allow for the release
- Reduced operating efforts under load
- Reduced operating noise and rattle when compared to zinc/steel products
- Engineered plastic withstands corrosion and has a lower coefficient of friction, reducing closing and operating efforts



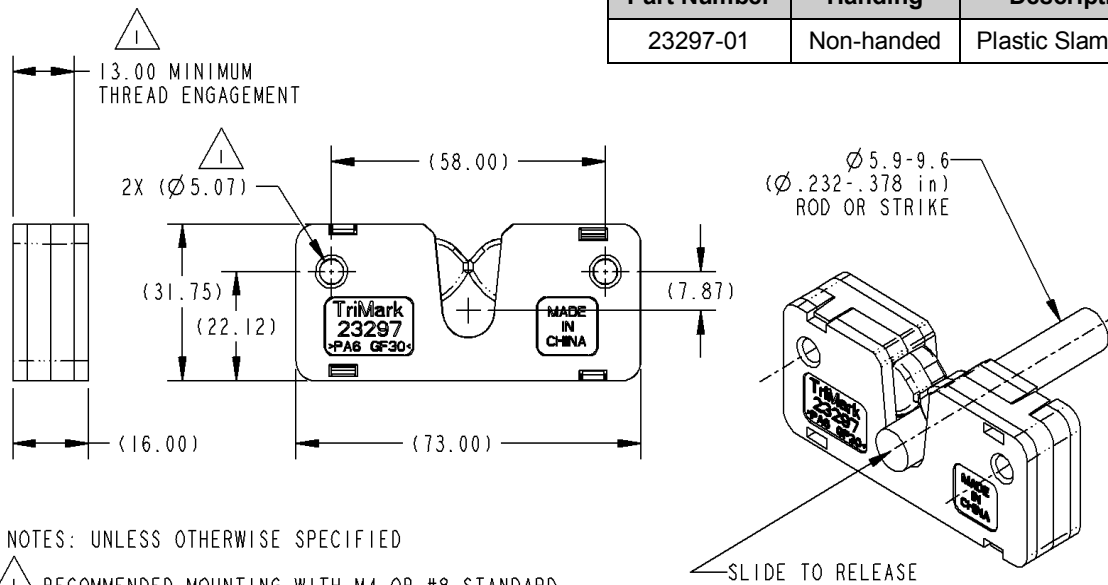
INSTALLATION:

- Easy to install with two (2) M6 thread forming fasteners (available) or two (2) M4 bolts (not included)

MATERIAL:

- Engineered injection molded plastic
- Non-corrosive stainless steel springs
- Internal cold rolled stamped steel reinforcement plate (zinc plated, clear chromate)

050-1300 Slam Latch		
Part Number	Handing	Description
23297-01	Non-handed	Plastic Slam Latch

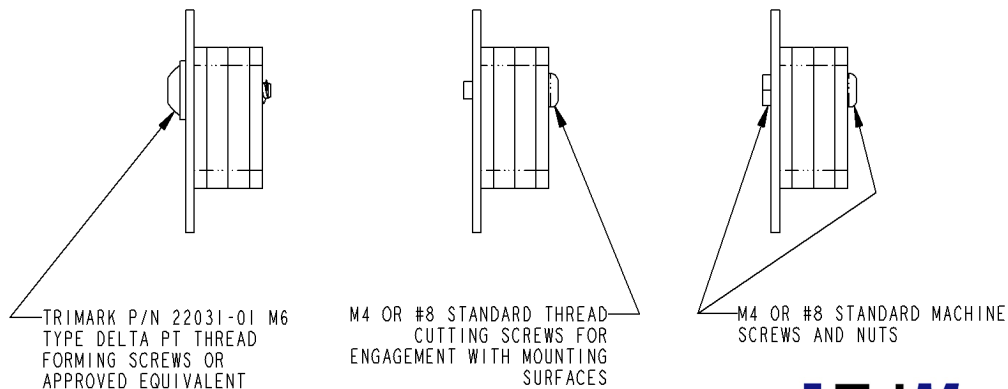


NOTES: UNLESS OTHERWISE SPECIFIED

- 1 RECOMMENDED MOUNTING WITH M4 OR #8 STANDARD THROUGH BOLTS OR TRIMARK P/N 22031-01 M6 TYPE DELTA POINT THREAD FORMING SCREWS OR APPROVED EQUIVALENT WITH 13.00mm MINIMUM THREAD ENGAGEMENT

For more information visit
www.trimarkcn.com or
www.trimarkcorp.com

MOUNTING OPTIONS



060-0100 Plunger Bolt

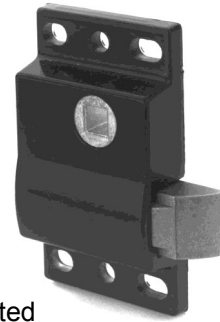
This latch was designed for lightweight compartment and access doors for on or off-highway equipment where low cost slam action latching with L handle actuation is desired. It features a robust steel plunger bolt for durability and a base mount that allows for ease of installation

FEATURES/BENEFITS:

- Minimal door seal pressures
- Easily installed using your choice of mounting fasteners (not included)
- Slotted mounting holes for easy adjustment (mounting surface must be completely flat)

AVAILABLE:

- In left or right-handed configurations (right-hand shown)
- 90° or 20° orientation of 5/16" square drive bar opening



FINISH:

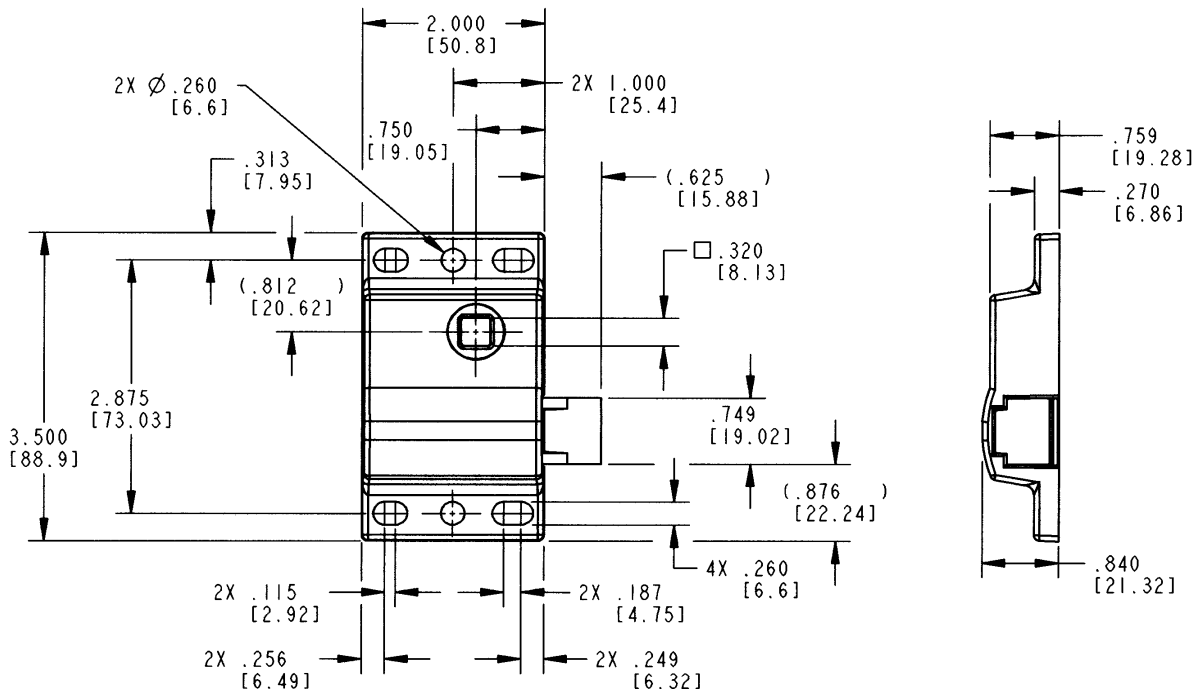
- Mill--unplated
- Zinc plated
- Black powder coated

MATERIAL:

- Housing: die cast zinc alloy
- Plunger bolt: powder metal/steel
- Back plate: zinc plated steel

060-0100 Plunger Bolt		
Part Number	Handing	Description
10120-12	Left	90 Deg. Drive, Medium Gloss Black
10120-15	Left	90 Deg. Drive, Clear Zinc
10117-12	Right	90 Deg. Drive, Medium Gloss Black
10117-15	Right	90 Deg. Drive, Clear Zinc

For more information visit
www.trimarkcn.com or
www.trimarkcorp.com



060-0500 Plunger Bolt

This latch was designed for small compartment and access doors where low cost slam action latching is desired. It features a plastic plunger bolt for ease of closing/opening and is available with rod collars and a direct release knob for installation and ease of use.

FEATURES/BENEFITS:

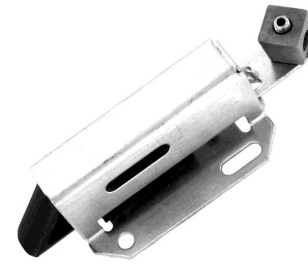
- Unique, economical, single piece cover design
- .625" (15.87mm) allowable travel
- Low operating efforts
- Corrosion resistant
- Slotted mounted holes for ease of installation
- Precision placed mounting holes allow pre-drilling of holes in mating parts
- Optional inside release feature
- Non-metallic plunger bolt
- Optional collar and setscrew for easy rod attachment and adjustment

FINISH:

- Cover and link - zinc plated with clear chromate conversion coating
- Collar - clear chromate dip

MATERIAL:

- Cover and link: Cold rolled steel
- Plunger bolt: Black nylon



INSTALLATION:

- Recommended use of #10-24 or #10-32 type D, F, G, or T thread cutting, self-threading screws (not included)

AVAILABLE:

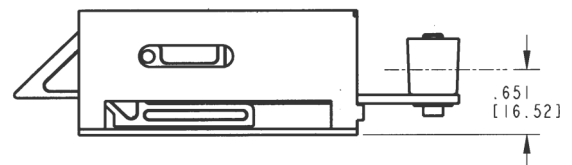
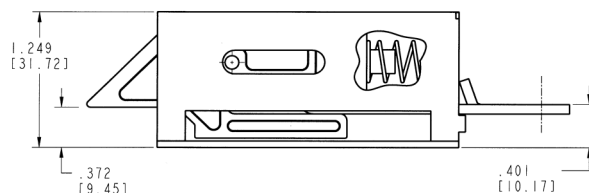
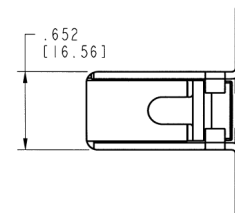
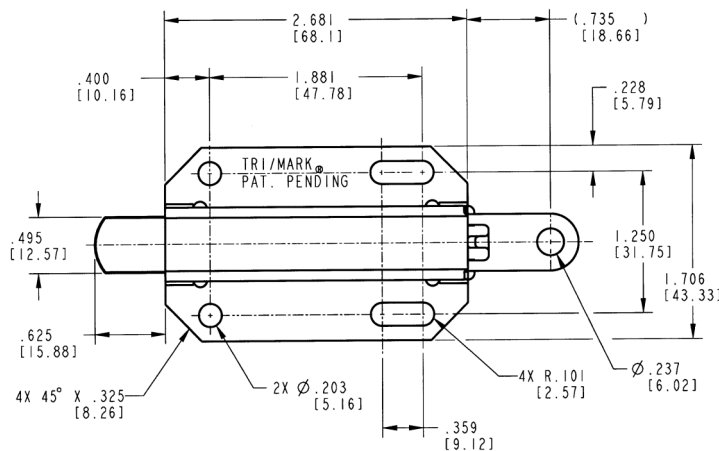
- With or without collar and setscrew as shown below (please inquire)
- Operated with cables or rods
- Custom rods up to .219 diameter (5.4mm)
- Optional nose configurations available (requires tooling)

NOTE: Rod collars are not intended or recommended for use in applications that require FMVSS 206 compliance or applications that have heavy or extreme striker bolt loads (> 25 lbs / 11 kg) and/or high to extreme usage (> 100,000 door cycles/life).

U.S. Patent No. 5,360,355

060-0500 Plunger Bolt		
Part Number	Handing	Description
12742-01	Non-handed	Black Chromate
12742-02	Non-handed	Clear Zinc

For more information visit
www.trimarkcn.com or
www.trimarkcorp.com



060-0901 Low Profile Plunger Bolt

This latch was designed for small compartment and access doors where low cost slam action latching is desired. It features a robust steel plunger bolt for durability and a base mount that allows for ease of installation.

- Light duty baggage doors
- Door weights up to 30 lbs. (13.6 kg)
- Door seal load up to 15 lbs. (6.8 kg)

FEATURES/BENEFITS:

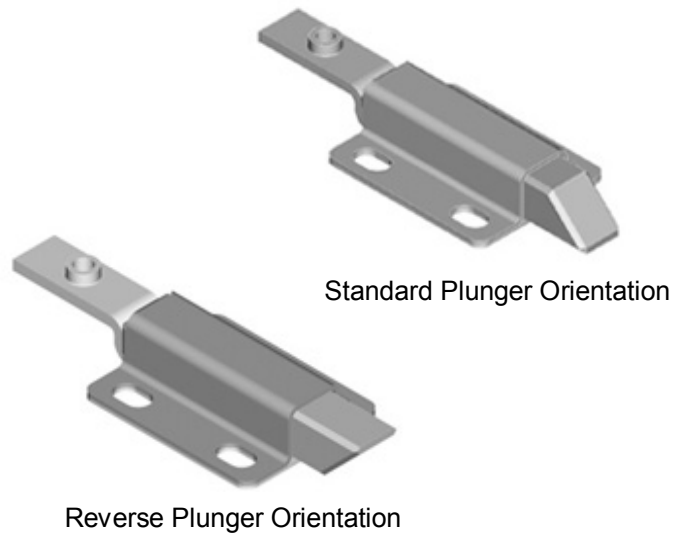
- Plunger bolt retraction is independent of link
- .500" (12.7mm) allowable travel
- Low operating efforts
- Corrosion resistant
- Slotted mounting holes for ease of installation

FINISH:

- Cover, link, plunger bolt - zinc plated with clear chromate conversion coating

MATERIAL:

- Cover and link: cold rolled steel or 304 stainless steel
- Plunger bolt: powder metal
- Spring and base plate: stainless steel



INSTALLATION:

- Recommended use of 1/4-20 or M6 type fasteners

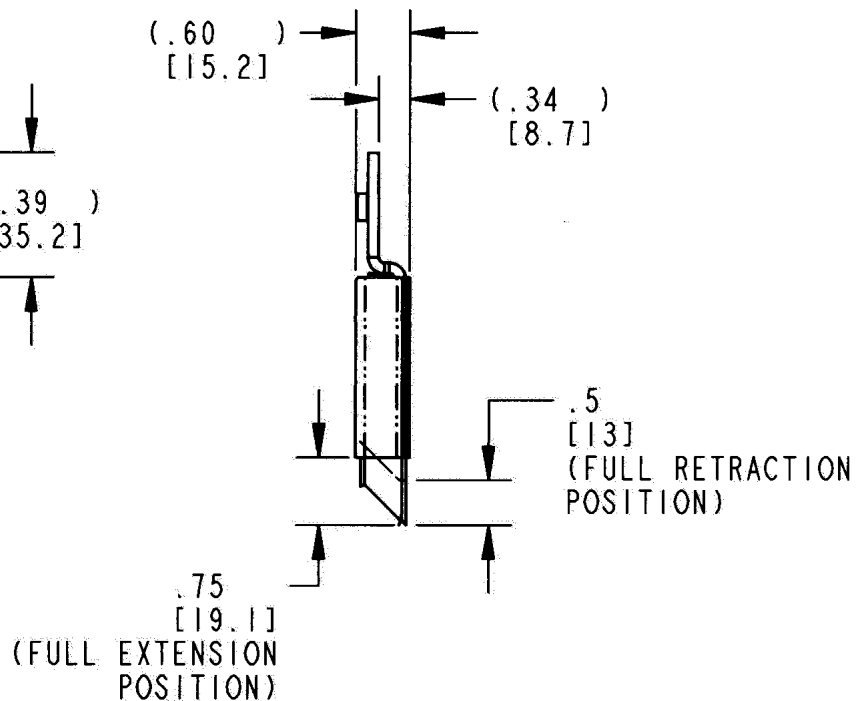
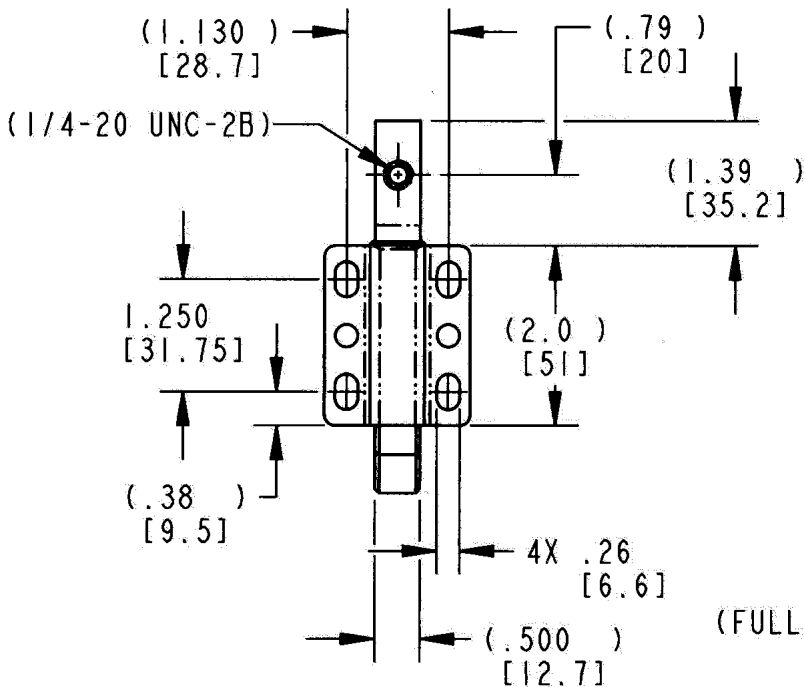
AVAILABLE:

- Reverse plunger for inward swinging doors (please inquire)

CAUTION: Does not meet FMVSS206 requirements.

060-0901 Low Profile Plunger Bolt		
Part Number	Plunger	Description
16902-01	Standard	Stainless Steel
16901-02	Reverse	Stainless Steel

For more information visit
www.trimarkcn.com or
www.trimarkcorp.com



090-0520 Window Hold-Open

This easy to operate window hold-open is designed for top and side hinged venting windows for on and off-highway vehicles. It features an over-center design that orientates the window at fully closed and fully open positions and an optional quick release pin.

- Mushroom window fixings designed for 5mm or 6mm glass thickness
- Non-handed style will work on windows in any orientation
- Easy to install with window fixings (optional)

AVAILABLE:

- With or without quick release pin

INSTALLATION:

- Installs through 18mm diameter hole

MATERIAL:

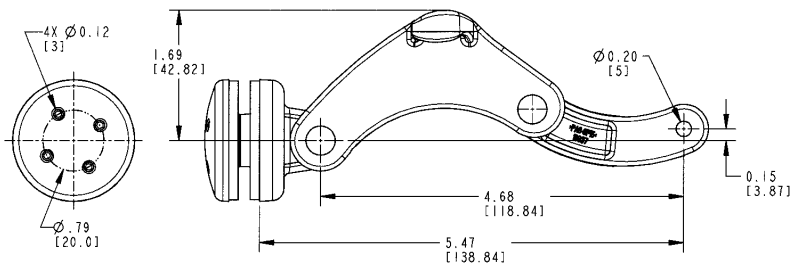
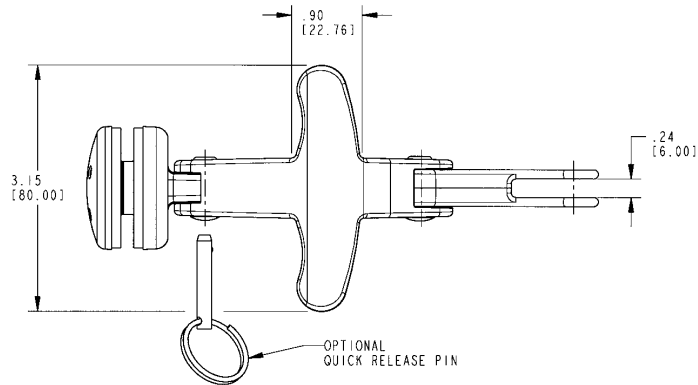
- Glass reinforced nylon (black)

Design Patent No. D443,809



090-0520 Window Hold-Open		
Part Number	Handing	Description
19344-02	Non-handed	Riveted
19345-02	Non-handed	Quick Release

For more information visit
www.trimarkcn.com or
www.trimarkcorp.com



I 30-0100 Dual Release Door Hold-Open

This product is designed for light to medium duty agricultural, construction personnel doors or any door that needs to be held in an open position. The simple rotating knob design allows for the door to be released from the open position from either the inside of the cab or from the ground level.

- Any application where it is desirable to hold or retain a hinged door in an open position

FEATURES/BENEFITS:

- Simple, easy to use, rotating knob/pin latch
- Engineered to withstand vibration, shock, dust, dirt and moisture
- Ergonomic knob design
- Two-stage lead in helps align the striker and receiver to compensate for door sag
- Universal design
- Rotating knob(s) allows for the door to be released from the open position from either the inside of the cab or from the ground level
- Durability in tough applications
- Easy to install
- Easily adaptable to a wide variety of door/cab configurations
- Fills a niche between the low cost “friction type” hold-opens and top end rotary and bayonet style products presently available

130-0100 Dual Release Door Hold-Open		
Part Number	Handing	Description
19375-01	Non-handed	Dual Release, Striker/Receiver Set



MATERIAL:

- Striker and receiver components: Acetal, black
- Knob and mounting bracket components: Impact modified Nylon 6, black
- Shroud: Thermoplastic rubber (TPR), black
- Torsion spring: 302 stainless steel
- Mounting fasteners: Carbon steel, zinc plated, black chromate
- Gasket: Neoprene, black

INSTALLATION:

- Easy to install with special thread forming screws (included)
- Flange mounting and self adhesive gaskets (included) permits through glass mounting

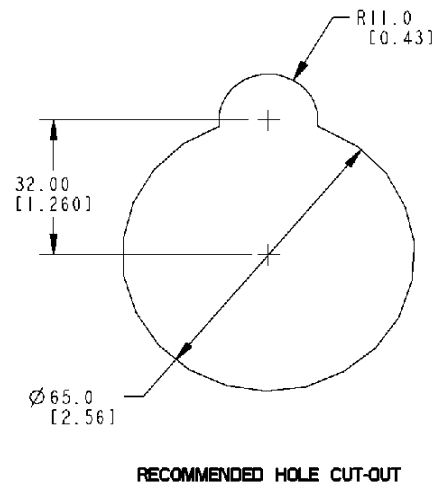
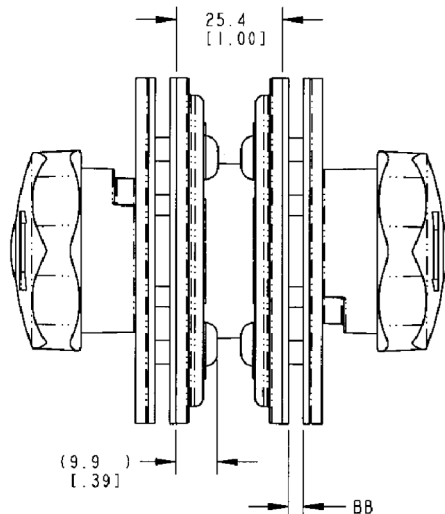
AVAILABLE:

- With gasket options to adapt to a wide range of door/cab thickness (3mm-6mm [.118-.236])

CAUTION: Door hold-open is not designed to secure a door in the closed position and does not comply with FMVSS 206

U.S. Patent No. 6,357,078

For more information visit
www.trimarkcn.com or
www.trimarkcorp.com



130-0110 Single Release Door Hold-Open

This product is designed for light to medium duty agricultural, construction personnel doors or any door that needs to be held in an open position. Using the same simple rotating knob design as the 130-0100, the fixed receiver on this product provides a lower cost solution where release from inside the vehicle is not a requirement.

- The 130-0110 fixed receiver is designed for use with TriMark's 130-0100-01-XX Striker Assembly. This component provides for a lower cost solution for light to medium duty agricultural, construction or other equipment personnel doors that need to be held in an open position and where release from inside the vehicle is not a requirement

FEATURES/BENEFITS:

- New shroud design provides a means to absorb shock loads and provide door release
- Revised mounting provides easier installation and alignment
- Simple, easy to use, rotating knob/pin latch
- Engineered to withstand vibration, shock, dust, dirt and moisture
- Ergonomic knob design
- Two-stage lead in helps align the striker and receiver to compensate for door sag
- Universal design
- Durability in tough applications
- Easy to install
- Easily adaptable to a wide variety of door/cab configurations
- Fills a niche between the low cost "friction type" hold-opens and top end rotary and bayonet style products presently available

For more information visit
www.trimarkcn.com or
www.trimarkcorp.com



MATERIAL:

- Engineered plastic withstands corrosion and UV exposure and has a lower coefficient of friction, reducing closing and operating efforts

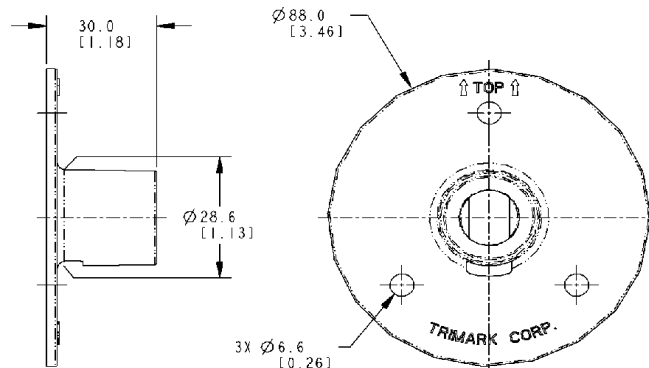
INSTALLATION:

- Flange mounting and gasket (included)
- Easy to install with (3) M6 fasteners (not included)

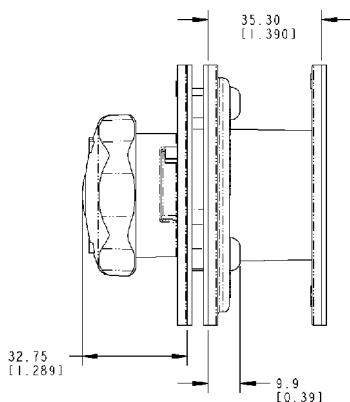
CAUTION: Door hold-open is not designed to secure a door in the closed position and does not comply with FMVSS 206

U.S. Patent No. 6,357,078

130-0110 Single Release Door Hold-Open		
Part Number	Handing	Description
20853-01	Non-handed	Single Release, Receiver Only

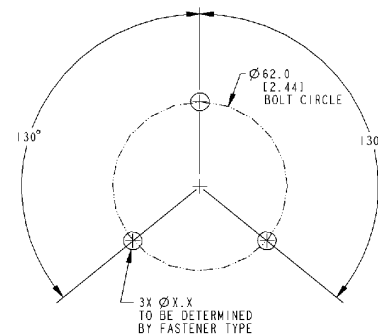


FIXED RECEIVER



STRIKER / DOOR SIDE

RECEIVER / DOOR SIDE



RECOMMENDED HOLE CUT-OUT FOR THE RECEIVER

030-0175 Stamped Steel Compartment Latch

This compartment latch was designed for light to medium duty storage and compartment doors. Available in buffed stainless steel or plated mild steel, this product features an integrated rotary latch for ease of installation and use and is available in a power lockable version.

- On or off-highway vehicle applications
- Service and utility truck body doors
- Fire and rescue unit vehicles
- Most storage, compartment and access doors with latch and strike location at top or sides of door
- Door weights of approximately 75 lbs (34 kg) or less

AVAILABLE:

- In locking or non-locking configurations
- Keyed alike
- Keyed random. 50 keycodes available
- 2-point pivot plate for doors that require a 2-point latching mechanism (030-0185)
- Optional gasket for flange of housing is available to provide resistance to water and dirt infiltration
- Power lock actuation
- Customer logo on paddle (please inquire)

FINISH:

- Buffed and polished stainless steel
- Zinc plate clear chromate conversion coat over mild steel for maximum paint adhesion and resistance to rust

U.S. Patent No. 5,299,844
Design Patent No. 369,089



MATERIAL:

- Housing and paddle: 300 series stainless steel
- Mild steel also available on housing and paddle
- Other components: zinc plated, mild steel
- Internal latch components: case hardened, smooth edge stamped steel
- Stainless steel non-corrosive springs and rivets

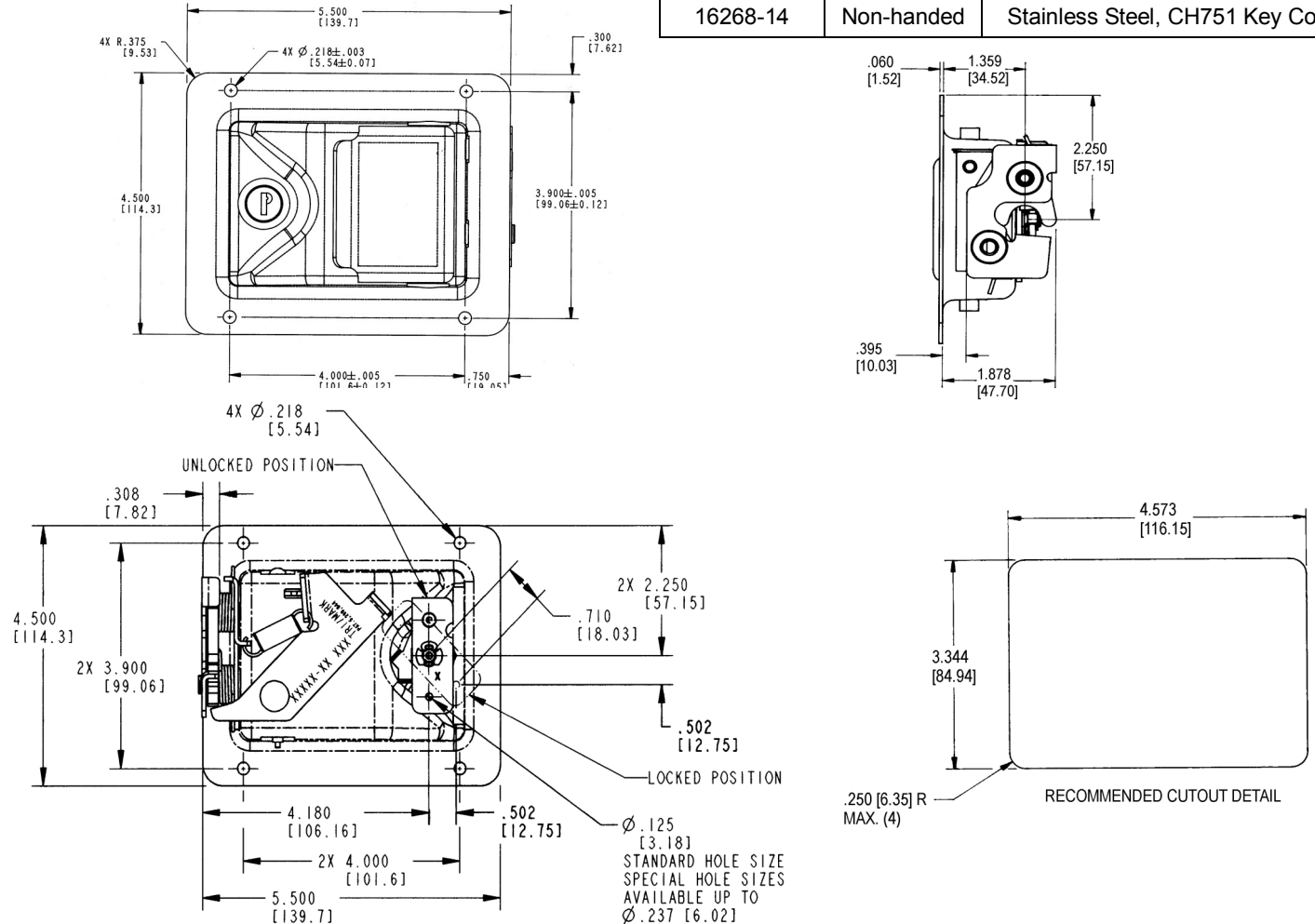
INSTALLATION:

- 3/16" (4mm) diameter fasteners
- Blind mount option also available

APPLICATION RECOMMENDATIONS:

- Striker bolt installation should allow for a minimum radial movement of .060 (1.524) for adjustment
- Rubber bumpers or door seals are recommended to reduce effects of vibration stress on door and latch system

030-0175 Stamped Steel Compartment Latch		
Part Number	Handing	Description
22460-01	Non-handed	Stainless Steel, Non-locking
16268-14	Non-handed	Stainless Steel, CH751 Key Code



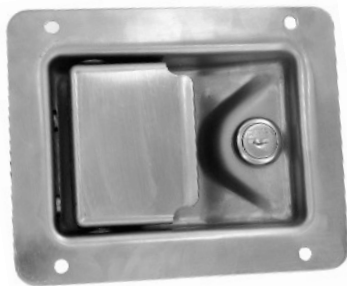
030-0185 Stamped Steel 2-Point Paddle Handle

This compartment latch was designed for light to medium duty storage and compartment doors. Available in buffed stainless steel or plated mild steel, this product features a 2-point bellcrank for remote actuation and is power lockable.

- On or off-highway vehicle applications
- Most storage, compartment and access doors with single or 2-point latch actuation

AVAILABLE:

- In locking or non-locking configurations
- Keyed alike
- Keyed random. 50 key codes available
- Optional gasket for flange of housing is available to provide resistance to water and dirt infiltration
- Power lock actuation



FINISH:

- Buffed and polished stainless steel
- Zinc plate and clear chromate conversion coat over mild steel for maximum paint adhesion and resistance to rust

MATERIAL:

- Mild steel also available on housing and paddle
- Stainless steel non-corrosive springs and rivets
- Other components: zinc plated, mild steel

INSTALLATION:

- 3/16" (4mm) dia. fasteners
- Front view and recommended door cut-out detail same as 030-0175 Stamped Steel Compartment Latch
- Blind mount option available

U.S. Patent No. 5,299,844

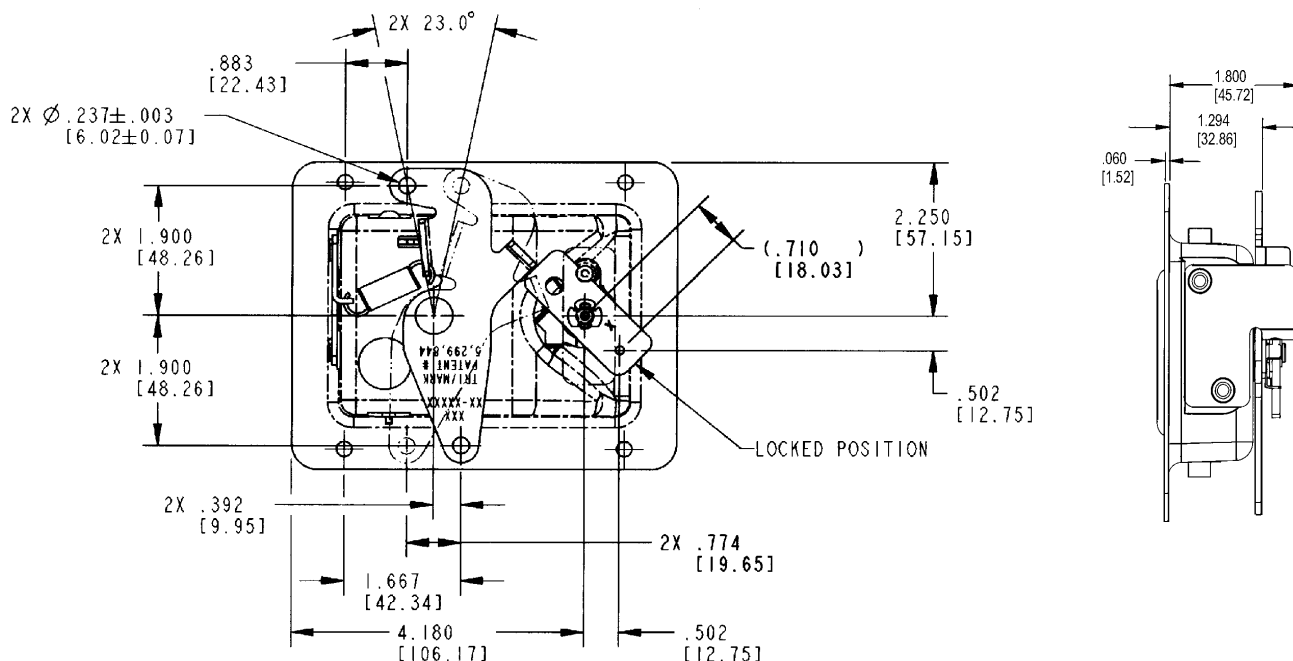
Design Patent No. 369,089

For more information visit

www.trimarkcn.com or

www.trimarkcorp.com

030-0185 Stamped Steel 2-Point Paddle Handle		
Part Number	Handing	Description
15644-01	Non-handed	Stainless Steel , Non-locking 2-Point
15648-01	Non-handed	Stainless Steel, Lock Sold Separate, 2-Point



030-0200 / 030-0250 Paddle Handle

This flush paddle was designed for heavy-duty off-highway vehicle entrance doors and features robust construction and pivot plate versatility.

- Off-highway vehicle applications - construction, mining, agricultural, forestry
- Doors requiring latch location remote from activating handle
- Door thickness of 2" (50.8mm) or greater

AVAILABLE:

- In right or left hand configurations (left hand shown)
- In locking or non-locking configurations

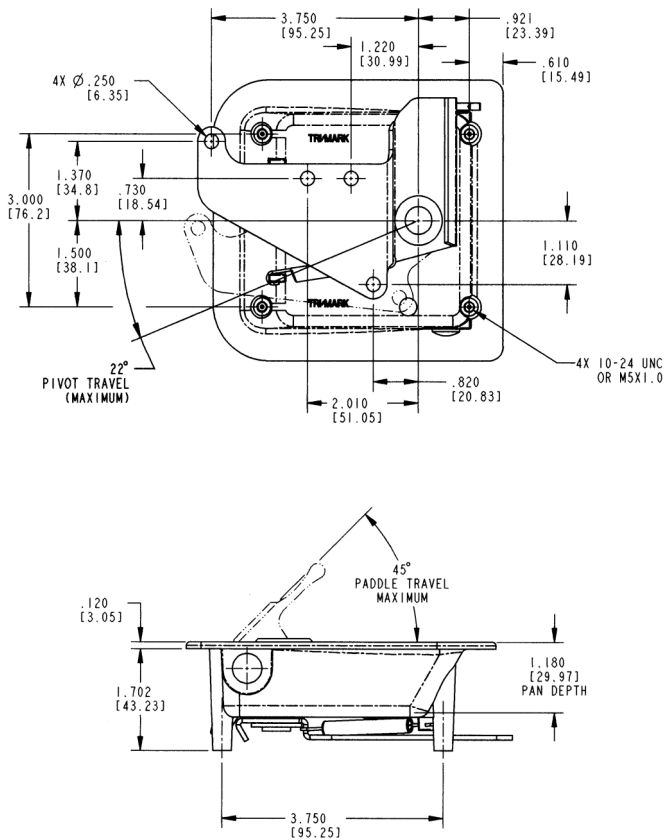
MATERIAL:

- Housing and paddle: die cast zinc alloy
- Pivot components: zinc plated, mild steel

FINISH:

- Housing and paddle: black powder coated
- Copper-nickel-chrome plated

For more information visit
www.trimarkcn.com or
www.trimarkcorp.com



INSTALLATION:

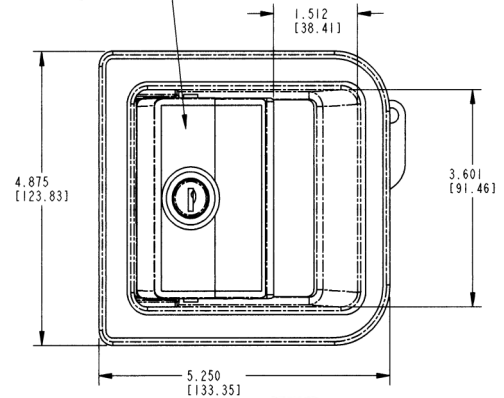
- Four 10-24 UNC or M5 X .8 mounting screws (not included)

NOTE: Mounting bosses are tapped 3/8" deep

CAUTION: Paddle does not comply with locking requirements of FMVSS 206.

030-0200 Paddle Handle		
Part Number	Handing	Description
11330-02	Left	Medium Gloss Black, CH751 Key Code
11328-03	Right	Medium Gloss Black, CH751 Key Code

NOTE: PADDLE IS RIGID IN LOCKED POSITION



030-0250 Paddle Handle		
Part Number	Handing	Description
12219-12	Right	Medium Gloss Black, M5 X .8 Mount
12220-12	Left	Medium Gloss Black, M5 X .8 Mount

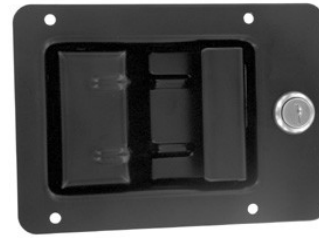
030-0500 Pivoting Catch Compartment Latch

This latch was specifically designed for storage and compartment doors for off-road vehicles including agricultural and construction equipment and industrial enclosures. It features a pivoting hook latching design and a reverse paddle design that is suited for top hinged doors and resistance to the insertion on foreign objects.

- Service and utility truck body doors
- Electrical switch and transformer boxes

FEATURES/BENEFITS:

- Pivoting catch allows relative movement between the door and frame when the vehicle frame flexes
- Components are spring loaded internally to minimize effects of vibration
- Reverse paddle design of the compartment latch is suited for top hinged doors and provides resistance to insertion of foreign objects
- Two levels of performance/duty: the heavy duty version (030-0550) provides a higher level of resistance to vibration and wear



AVAILABLE:

- Key locking - keyed alike with most common key codes to match paddle actuators used for operator enclosures
- Non-locking
- Padlockable for increased security
- Optional hole patterns

MATERIAL:

- All steel reinforced construction

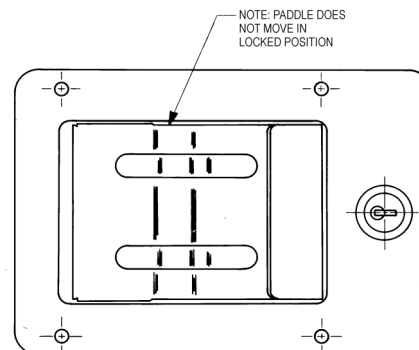
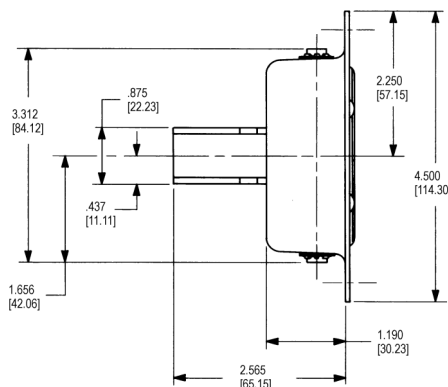
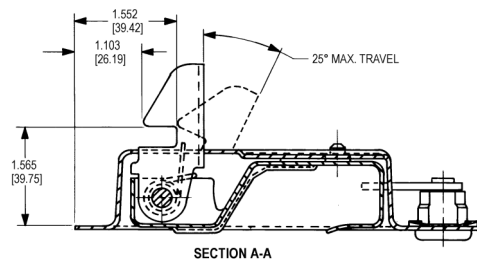
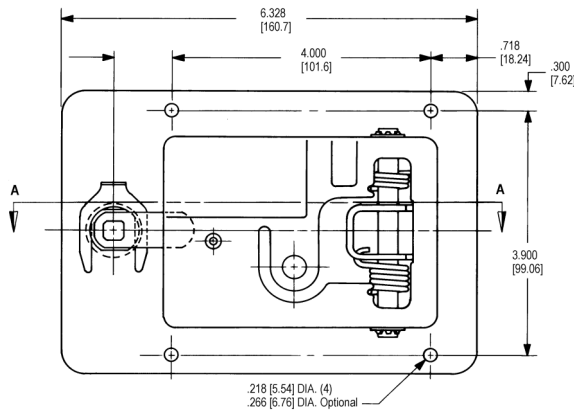
FINISH:

- Zinc plate, clear chromate conversion coat for maximum paint adhesion and resistance to rust
- Black powder coat

INSTALLATION:

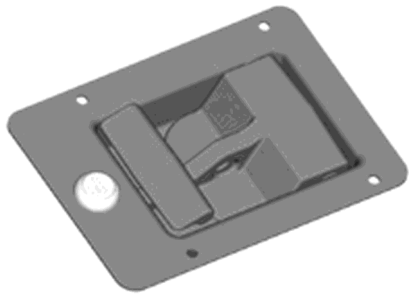
- Lock cylinder may be installed after the latch has been assembled into the door and painted
- Four 3/16" M4 diameter steel "pop" rivets or 1/4-20 M6 screws (not included)

030-0500 Pivoting Catch Compartment Latch		
Part Number	Handing	Description
11608-16	Non-handed	Clear Zinc Finish, Padlockable
11608-01	Non-handed	Low Gloss Black, Padlockable
11662-16	Non-handed	Clear Zinc Finish, CH751 Key Code
11662-12	Non-handed	Medium Gloss Black, CH751 Key Code



For more information visit
www.trimarkcn.com or
www.trimarkcorp.com

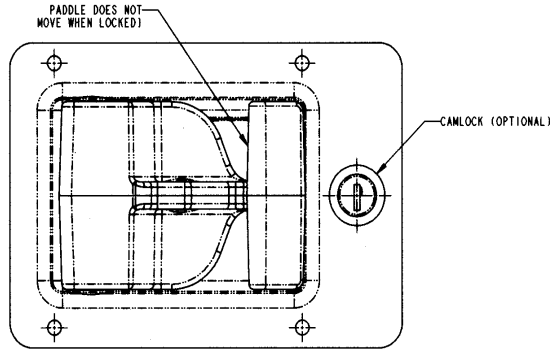
030-0550 Heavy Duty Pivoting Catch Compartment Latch



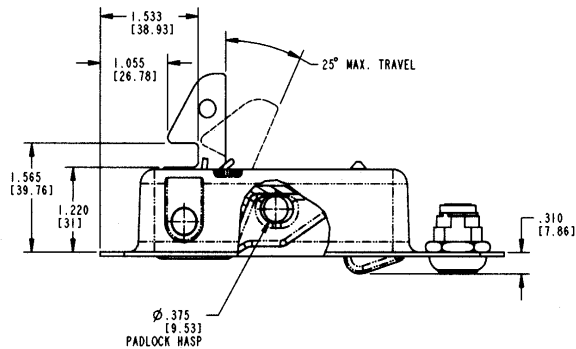
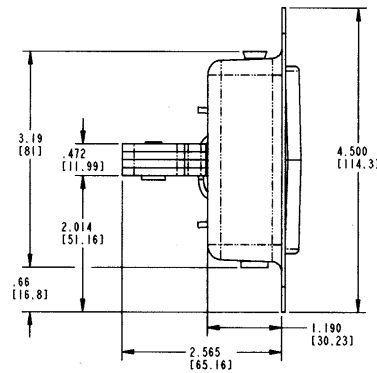
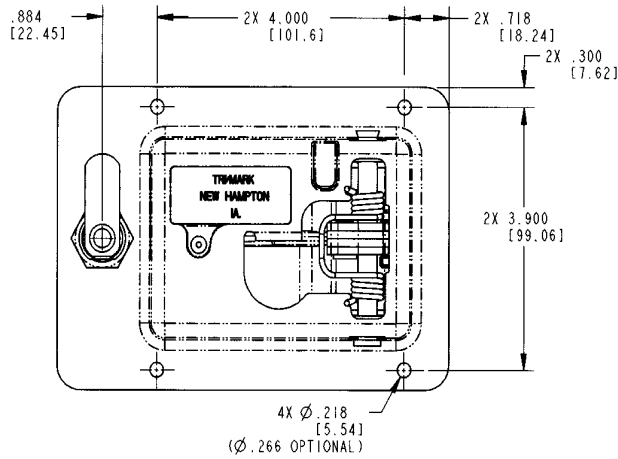
030-0550 FEATURES:

- The high strength steel laminated hook resists wear and increases strength
- Heavy duty zinc die-cast paddle resists deformation
- Retrofits the same cutout as the 030-0500 Pivoting Catch Compartment Latch

CAUTION: Compartment latch does not meet FMVSS 206 load requirements.



030-0550 Heavy Duty Pivoting Catch Compartment Latch		
Part Number	Handing	Description
18530-02	Non-handed	Low Gloss Black, Padlockable
18530-01	Non-handed	Clear Zinc Finish, Padlockable



For more information visit
www.trimarkcn.com or
www.trimarkcorp.com

030-0800 Flush Mounted Paddle Handle

This flush paddle was designed for medium to heavy-duty on-highway vehicle entrance doors and features robust construction and pivot plate versatility.

- Off-highway applications--construction, mining, forestry and agricultural
- On-highway--emergency vehicles not requiring FMVSS 206 standards

FEATURES/BENEFITS:

- Mounts in doors requiring latch location remote from activating handle
- Can be used with both cutouts shown in drawing

AVAILABLE:

- In right or left hand configurations (left hand shown)
- Non-locking or locking--keyed alike with shuttered keyway

INSTALLATION:

- Easily installed with (2) 1/4-20 UNC mounting screws and brackets (supplied)



MATERIAL:

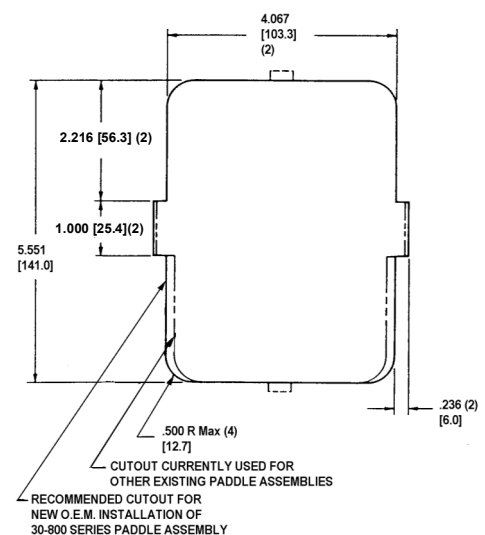
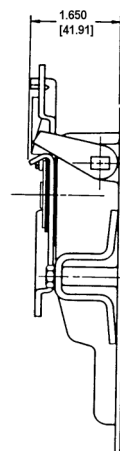
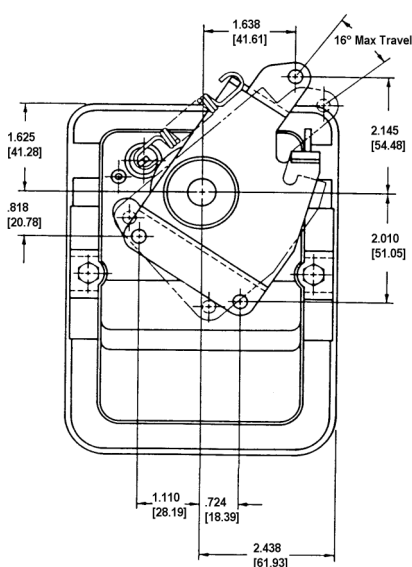
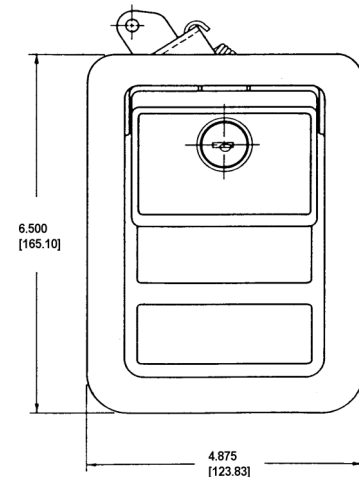
- Housing and paddle: sturdy die cast zinc alloy
- Pivot components: zinc plated, mild steel
- Bushing for paddle axle and thrust washers for pivot plate: 6-6 nylon

FINISH:

- Housing and paddle can be finished in your choice of black powder coat or buffed copper-nickel-chrome

CAUTION: Paddle does not meet the locking requirements for FMVSS 206.

030-0800 Flush Mounted Paddle Handle		
Part Number	Handing	Description
13028-01	Right	Non-locking, Low Gloss Black, 4-Point, 6mm Rod
11997-37	Right	CH751, Low Gloss Black, 3-Point, 6mm Rod
13080-01	Left	Non-locking, Low Gloss Black, 4-Point, 6mm Rod
11996-37	Left	CH751, Low Gloss Black, 3-Point, 6mm Rod
13028-02	Right	Non-locking, Chrome, 4-Point, 6mm Rod
14698-02	Right	CH751, Chrome, 4-Point, 6mm Rod
13080-02	Left	Non-locking, Chrome, 4-Point, 6mm Rod
11996-01	Left	CH751, Chrome, 3-Point, 6mm Rod



For more information visit
www.trimarkcn.com or
www.trimarkcorp.com

030-0825 Flush Mount Paddle Handle With Inside Release Lever

This flush paddle was designed for medium to heavy-duty on-highway vehicle entrance doors and features robust construction and an integrated inside release lever that reduces the need for a separate inside release.

- Off-highway applications--construction, mining, forestry and agricultural
- On-highway--emergency vehicles not requiring FMVSS 206 standards

FEATURES/BENEFITS:

- Mounts in doors requiring latch location remote from activating handle
- Inside release lever eliminates much of the linkage typically required with conventional inside handle
- Operator can exit even if the door is locked from the outside

AVAILABLE:

- In right or left hand configurations (left hand shown)
- Non-locking or locking--keyed alike with shuttered keyway
- Optional pivot plates available for your particular application

For more information visit
www.trimarkcn.com or
www.trimarkcorp.com



INSTALLATION:

- Easily installed with two 1/4-20 UNC mounting screws and brackets (screws and brackets are supplied)

MATERIAL:

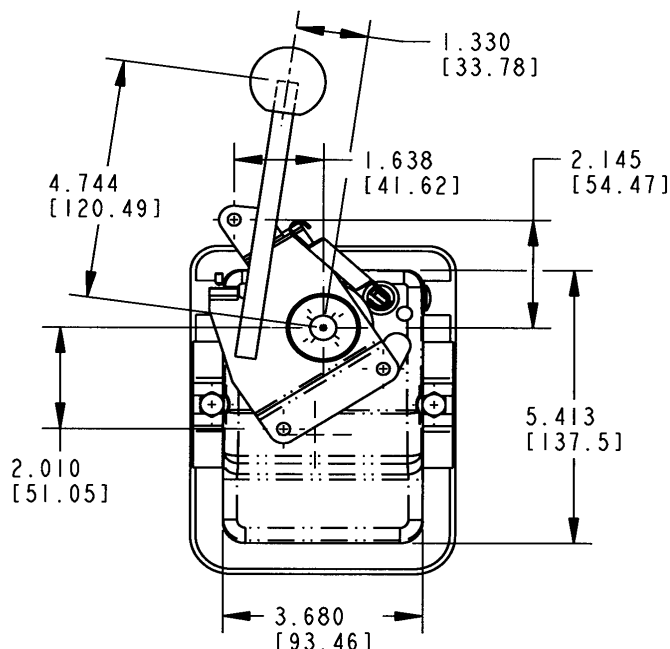
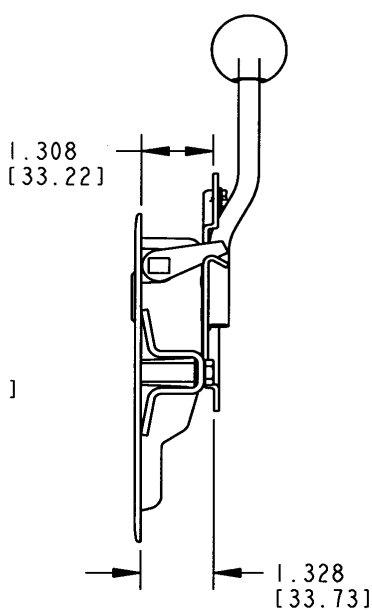
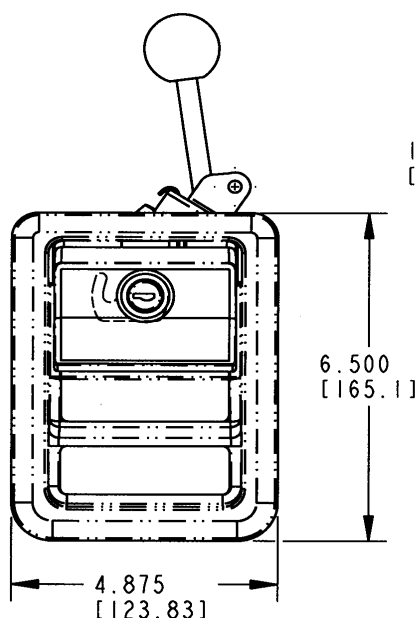
- Housing and paddle: sturdy die cast zinc alloy
- Pivot components: zinc plated, mild steel
- Bushing for paddle axle and thrust washers for pivot plate: 6-6 nylon

FINISH:

- Housing and paddle can be finished in your choice of black powder coat or buffed copper-nickel-chrome

CAUTION: Paddle does not meet the locking requirements for FMVSS 206

030-0825 Flush Mount Paddle Handle With Inside Release Lever		
Part Number	Handing	Description
12353-37	Right	CH751, Low Gloss Black, 3-Point, 6mm Rod



030-0850 Flush Mounted Paddle Handle (FMVSS 206)

This flush paddle was designed for medium to heavy-duty on-highway vehicle entrance doors and features robust construction, a lock detail that allows for power locking and is compliant to FMVSS 206.

FEATURES/BENEFITS:

- Inside lock provides override if outside paddle should be locked
- Paddle is rigid when locked
- Inside lock provides for multiple connection points for use of inside lock and/or powerlock actuation

INSTALLATION:

- Either handed version can be installed in a wide range of locations in door - either horizontal or vertical orientation (left hand shown)

MATERIAL:

- Housing and paddle: zinc die cast alloy
- Pivot components: zinc plated, mild steel
- Bushing for paddle axle and thrust washers for pivot plate: 6-6 nylon

FINISH:

- Black powder coated
- Copper-nickel-nickel-chrome plated
- Combination black powder coated housing and chrome paddle



AVAILABLE:

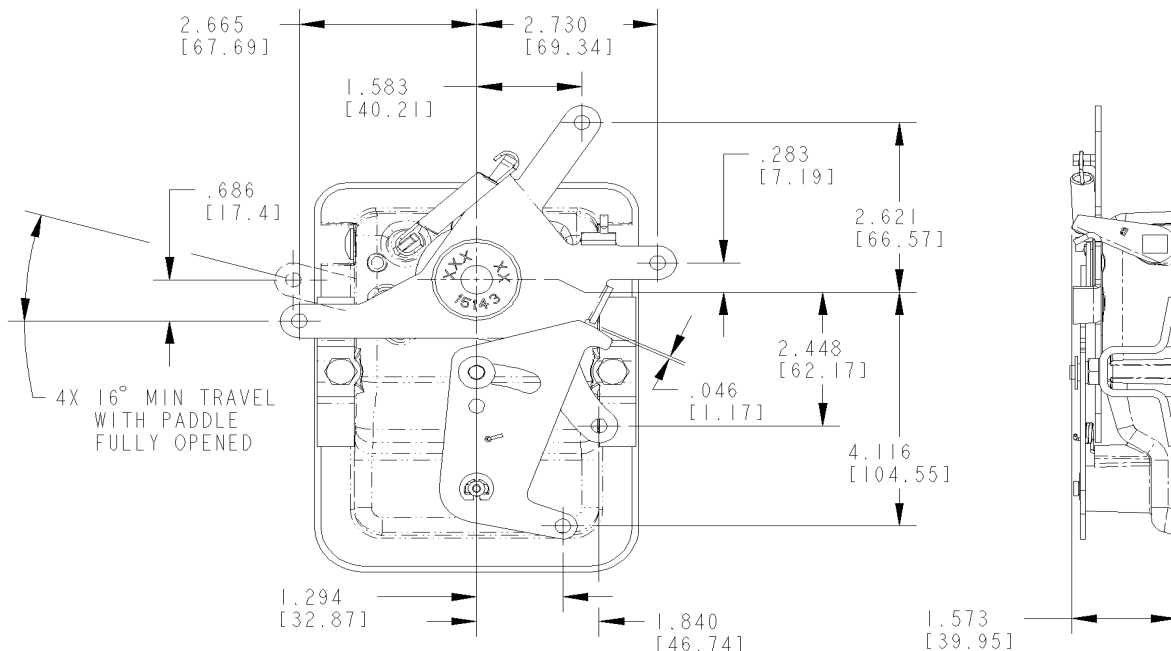
- Optional gasket for flange of housing is available to provide resistance to water and dirt infiltration
- Keyed random. TM201-TM250
- Keyed alike
- Lock can be keyed to match other TriMark door products with KeyOne™ Plus for a single-key system, keyed alike



NOTE: Meets FMVSS 206 locking requirements and may be used in FMVSS 206 applications pending TriMark application approval.

For more information visit
www.trimarkcn.com or
www.trimarkcorp.com

030-0850 Flush Mounted Paddle Handle (FMVSS 206)		
Part Number	Handing	Description
18881-04	Right	KeyOne Plus, Low Gloss Black, 4-Point, 6mm Rod, Single Point Lock Cam



030-1200 Round Paddle Handle

The 030-1200 Round Paddle Handle was designed for use on personnel and compartment doors for light to medium duty on on- or off-highway applications. This ergonomic handle offers compact size for a cost effective price and brings a modern look and function to your cabs and enclosures.

- Light to medium duty agricultural and construction personnel and compartment doors
- Any baggage or compartment door for on or off-highway applications
- Use in a direct latch release application or used in conjunction with a bellcrank for single point remote actuation

FEATURES/BENEFITS:

- Ergonomic function and styling
- Interior or exterior applications
- Rigid handle when locked
- KeyOne™ Plus features the ability to key-alike an entire vehicle with a single reversible key for ease of operation and larger body diameter for enhanced security. Also allows for serviceability of the lock cylinder.
- Non-handed configuration allows for universal applications



AVAILABLE:

- With a conventional paddle or open bail style handle for maximum leverage
- Can be keyed alike with most single and reversible key systems
- In locking or non-locking configurations
- With gasket for maximum water resistance
- With standard mounting bracket

MATERIAL:

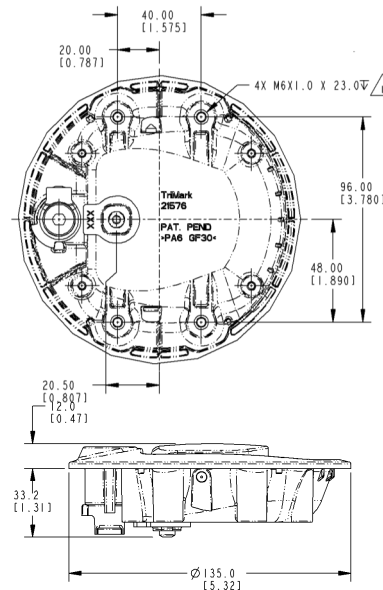
- Handle, paddle and actuator: engineered plastic withstands corrosion and UV exposure
- Spring: non-corrosive stainless steel

INSTALLATION:

- Easy installation with (4) M6 special high performance thread forming fasteners available
- Allows for glass mounting through a single 120mm diameter hole or steel through a double- D cutout

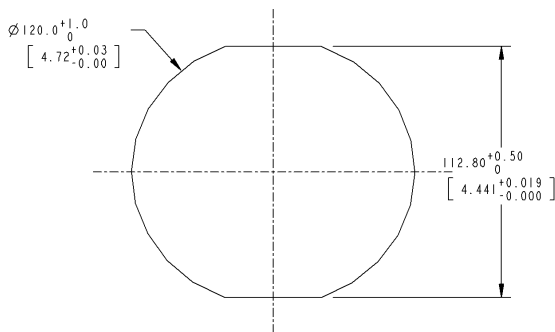
NOTE: Product does not meet the locking requirements for FMVSS 206

Design Patent No. D541,129

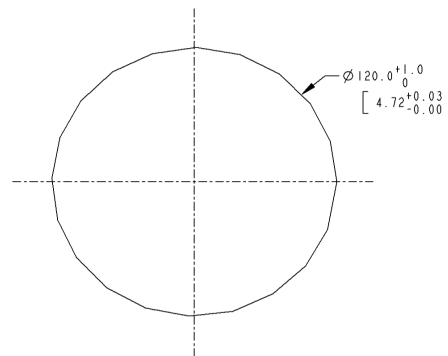


NOTE: UNLESS OTHERWISE SPECIFIED;
 RECOMMENDED INSTALLATION TORQUE TO BE 9.4-11.5 N-m [83-102 lbf-in]

030-1200 Round Paddle Handle		
Part Number	Handing	Description
21576-01	Non-handed	Non-locking, Standard Handle
21576-02	Non-handed	Non-locking, Open Style Paddle
22014-01	Non-handed	14603 Key Code, Standard Handle



Steel Cutout



Glass Cutout

030-1400 Paddle Handle

This flush mounted paddle is a redesign of our 030-0400 paddle handle for entrance doors on RV and specialty vehicles. Containing the same proven mechanical details as previous with a modernized look, it can be used in FMVSS 206 applications and features a remote pivot plate and lock cam actuation.

AVAILABLE:

- Lock can be keyed to match other TriMark door products with KeyOne™ Plus for a single-key system, keyed alike or provided non-locking
- Several pivot plate options are available to suit a wide variety of applications



MATERIAL:

- Sturdy zinc die cast alloy housing and paddle
- Steel components: zinc plated, mild steel

FINISH:

- Standard black powder coated, buffed copper-nickel-nickel-chrome plated or combination black powder coated housing and buffed chrome paddle

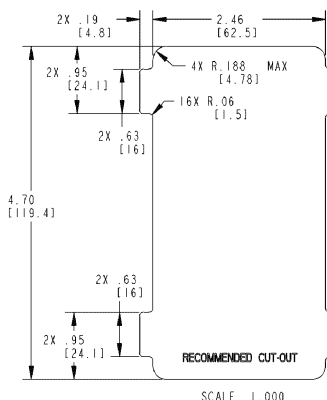
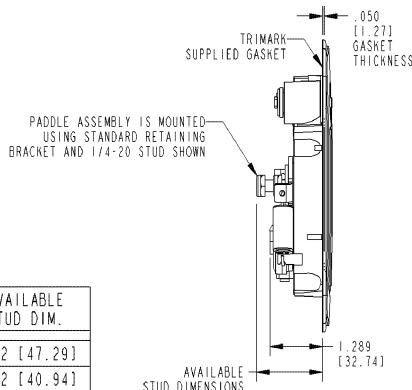
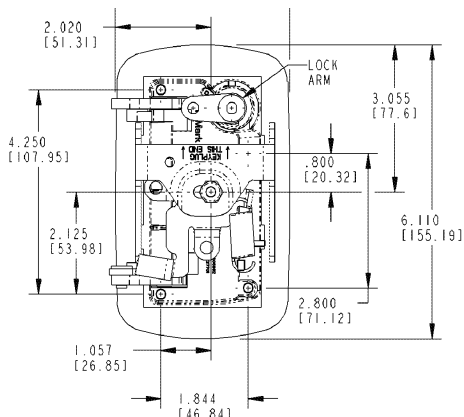
INSTALLATION:

- Handle is easy to install with supplied single 1/4-20 UNC nut and mounting bracket (Mounting torque not to exceed 30 in-lbs [3.39N-m])
- Either handed version can be installed in a wide range of locations in both horizontal or vertical orientations (left hand shown)
- Retrofits with most 030-0400 flush paddle handles

NOTE: Meets FMVSS 206 locking requirements and may be used in FMVSS 206 applications pending TriMark application approval.

U.S. Patent No. 5,606,882
Design Patent D537,701

For more information visit
www.trimarkcn.com or
www.trimarkcorp.com



AVAILABLE STUD DIM.
1.862 [47.29]
1.612 [40.94]

030-1400 Paddle Handle		
Part Number	Handing	Description
22659-01	Left	KeyOne Plus, Long Stud With Bracket, Standard Lock Cam, Low Gloss Black
22659-03	Left	KeyOne Plus, Long Stud With Bracket, Standard Lock Cam, Chrome Handle
22663-01	Left	Non-locking, Low Gloss Housing, Chrome Handle
22660-04	Right	KeyOne Plus, Long Stud With Bracket, Standard Lock Cam, Low Gloss Black
22660-03	Right	KeyOne Plus, Long Stud With Bracket, Standard Lock Cam, Chrome Handle
22662-01	Right	Non-locking, Low Gloss Housing, Chrome Handle

030-1425 Paddle Handle

This redesigned product functions as a remote inside release and features a built-in lock lever and improved zinc die cast bezel for durability and ease of installation. It is also available in non-locking and power locking versions.

- Remote interior release and locking applications for on or off-highway
- Light to medium duty recommended
- Use with TriMark latch/logic mechanisms

FEATURES/BENEFITS:

- Offers modern automotive styling
- Built-in lock lever for added security
- Remote mounting provides versatility and flexibility

AVAILABLE:

- Right or left hand configurations (right hand shown)
- Cutout for power door lock
- Non-locking bezel also available
- As a complete assembly or separate components for application flexibility



MATERIAL:

- Bezel and release lever die cast zinc alloy
- Lock lever -- engineered plastic
- Stamped steel mounting brackets

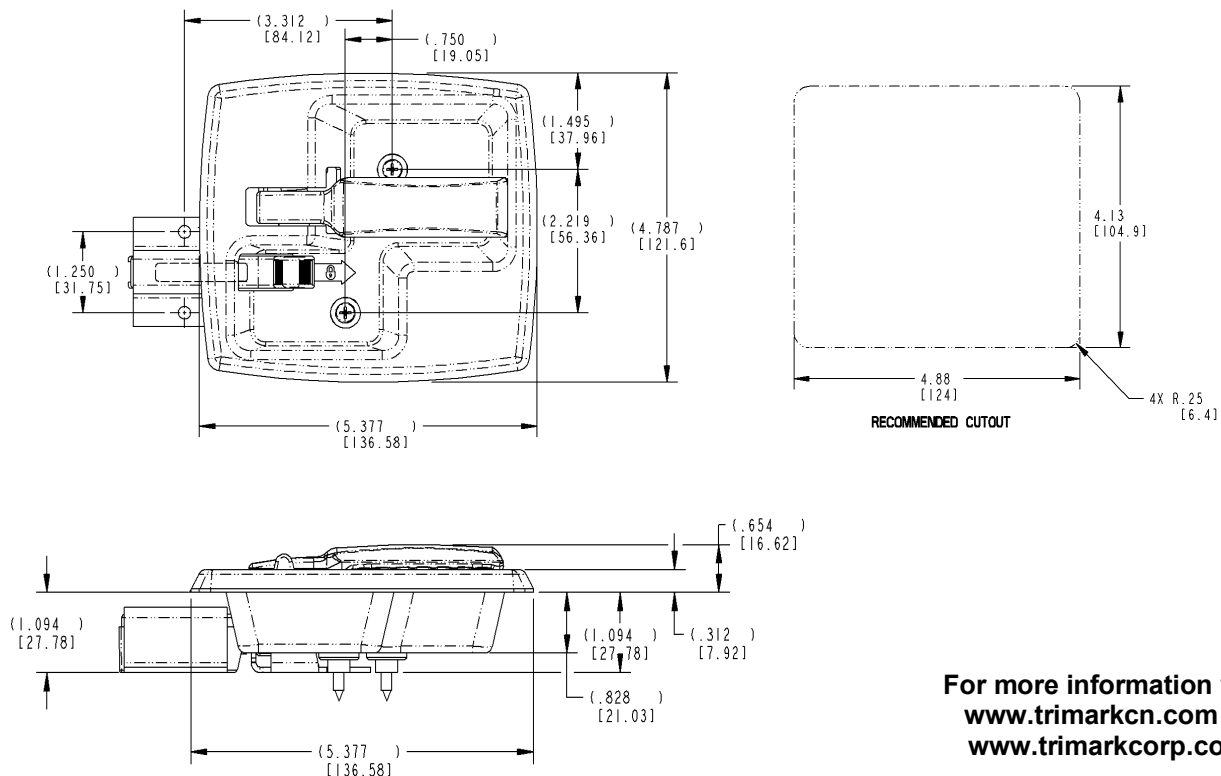
INSTALLATION:

- Fasteners supplied for mounting inside bezel

NOTE: Meets FMVSS 206 load requirements and may be used in FMVSS 206 application pending TriMark application approval.

Patents Pending

030-1425 Paddle Handle		
Part Number	Handing	Description
21430-02	Left	Low Gloss Black, Manual Lock
21431-01	Right	Low Gloss Black, Manual Lock



For more information visit
www.trimarkcn.com or
www.trimarkcorp.com

030-1450 2-Point Paddle Handle

This flush mounted paddle is a redesign of our 030-0450 paddle handle for compartment doors and entrance doors on RV and specialty vehicles. Containing the same proven mechanical details as previous with a modernized look, it can be used in FMVSS 206 applications, is power lockable and features 2-point remote pivot plate and lock cam actuation.

FEATURES/BENEFITS:

- Offers updated styling
- Paddle is rigid when locked
- Inside lock detail provides for multiple connection points for use of inside lock and/or powerlock actuation
- Molded rubber gasket for flange of housing provides resistance to water and dust infiltration

AVAILABLE:

- Lock can be keyed to match other TriMark door products with KeyOne™ Plus for a single-key system, keyed alike or provided non-locking
- Several 2-point pivot plate options are available to suit a wide variety of applications



INSTALLATION:

- Handle is easy to install with single 1/4-20 UNC nut and supplied mounting bracket (Mounting torque not to exceed 30 in-lbs [3.39N-m])
- Either handed version can be installed in a wide range of locations in either horizontal or vertical orientations (left hand shown)
- Retrofits with most 030-0450 flush paddle handles

FINISH:

- Standard black powder coated, buffed copper-nickel-nickel-chrome plated or combination black powder coated housing and buffed chrome paddle

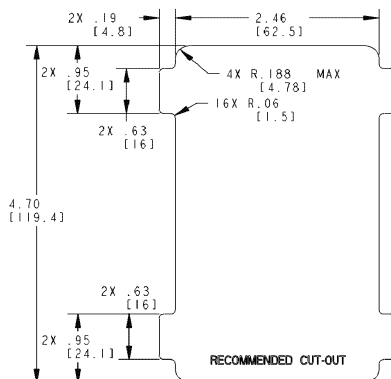
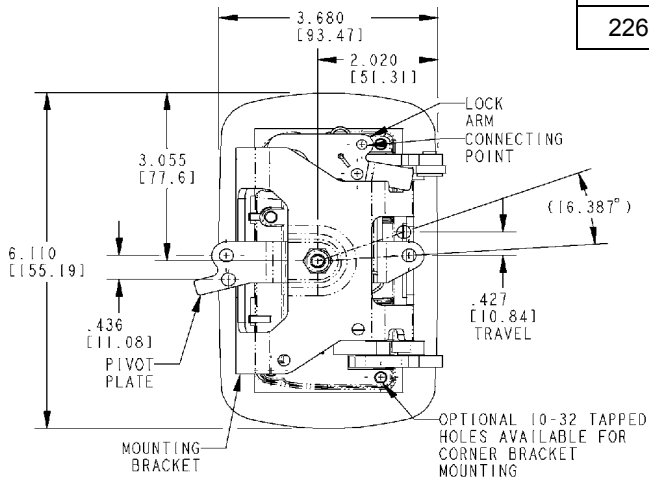
MATERIAL:

- Sturdy zinc die cast alloy housing and paddle
- Steel components: zinc plated, mild steel

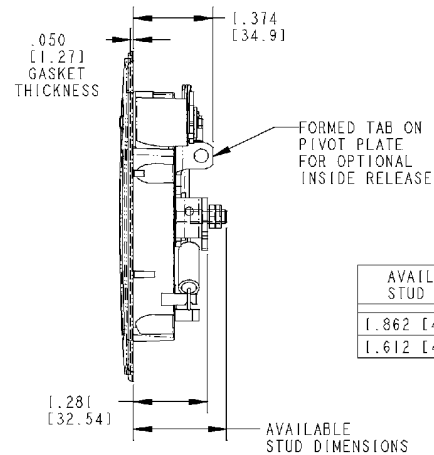
NOTE: Meets FMVSS 206 locking requirements and may be used in FMVSS 206 applications pending TriMark application approval.

Design Patent D537,701

For more information visit
www.trimarkcn.com or
www.trimarkcorp.com



030-1450 2-Point Paddle Handle		
Part Number	Handing	Description
22684-01	Left	KeyOne Plus, Low Gloss Black
22677-01	Left	Non-locking, Low Gloss Black
22677-02	Left	Non-locking, Low Gloss Housing, Chrome Handle
22676-12	Right	KeyOne Plus, Low Gloss Housing, Chrome Handle
20599-02	Right	KeyOne Plus, Low Gloss Black
22674-01	Right	Non-locking, Low Gloss Black
22679-01	Right	Non-locking, Low Gloss Housing, Chrome Handle



060-0460 EZ Access Baggage Door Lock

This door lock was specifically designed for baggage and compartment doors for recreational vehicles including motor homes and travel trailers. It features a modern styled paddle and is available with multi-point functionality or as a single point.

FEATURES/BENEFITS:

- Offers lower operating efforts and a more forgiving assembly
- Ample finger clearance
- Paddle can be locked before the door is shut (slam action)
- Updated styling
- Improved plunger design
- Increased mechanical advantage to allow for lower operating efforts
- Available in single or 3-point actuation for latching versatility

AVAILABLE:

- Locking or non-locking
- Keyed alike
- Wide variety of mounting bracket options available for various applications
- Lock can be keyed to match other TriMark door products with KeyOne™ Plus for a single-key system, keyed alike or provided non-locking
- Multi-point actuation or single point
- Zinc or plastic plunger



MATERIAL:

- Housing and paddle: die cast zinc
- Pivot plate, axles, pivot arm: steel
- Plunger bolt: plastic or die cast zinc

FINISH:

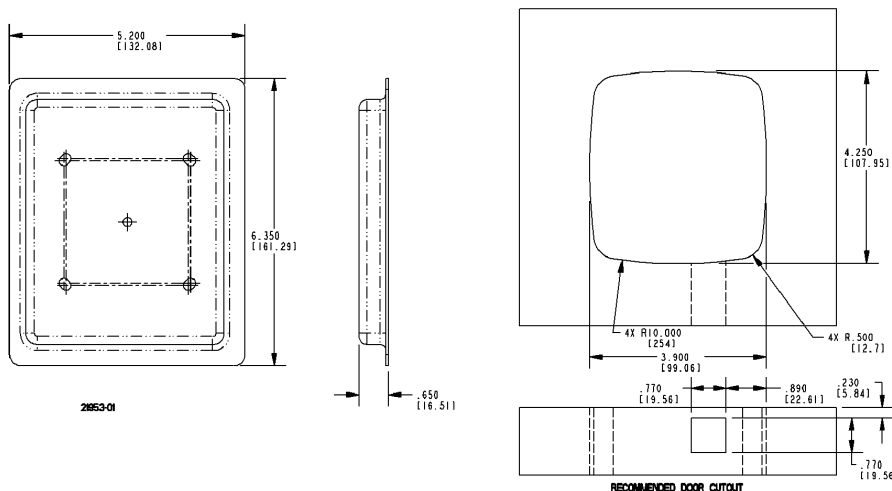
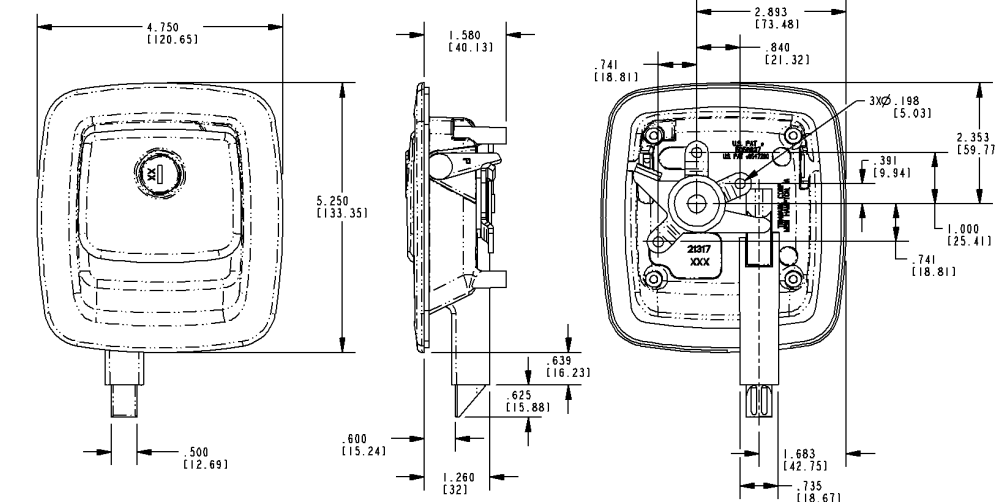
- Paddle and housing: powder coat in various colors
- Steel components: zinc coat with clear chromate

INSTALLATION:

- Mounts with four (4) #8-32 thread forming fasteners (not supplied)
- Supplied with gasket already applied under recess in housing flange for simple, clean installation

U.S. Patent No. 6,547,290

060-0460 EZ Access Baggage Door Lock		
Part Number	Handing	Description
21247-01	Non-handed	Non-locking, Zinc Plunger
21402-01	Non-handed	Non-locking, Multi-Point
21317-03	Non-handed	KeyOne Plus, Zinc Plunger
21401-01	Non-handed	KeyOne Plus, Multi-Point



For more information visit
www.trimarkcn.com or
www.trimarkcorp.com

060-0475 Flush Baggage Door e-LOCK

This baggage door lock was specifically designed for baggage and compartment doors for recreational vehicles including motor homes and travel trailers. It features a modern styled paddle and offers the use of power door lock actuation. It is available with multi-point functionality or as a single point with either a zinc or plastic plunger.



FEATURES/BENEFITS:

- Offers modernized styling
- Allows the use of power door lock actuation
- Large handle provides comfortable finger access and greater ease of operation (ergonomics)
- Single point zinc or plastic plunger or multi-point functionality works with TriMark rotary or plunger latches in doors 1.187" (30.1mm) and thicker
- Multi-point handle can be mounted in vertical or horizontal orientations and is able to actuate latches at the sides and also the top and bottom of the door
- Paddle can be locked before the door is closed (slam action)

FINISH:

- Supplied painted in a low gloss black finish, the product can be easily painted over to match body colors
- Also available copper-nickel chrome plated

MATERIAL:

- Sturdy zinc die cast alloy housing, paddle and plunger
- All parts (axles, pivot arm, pivot plate, lock cam): cold rolled steel with zinc plate, clear chromate for corrosion resistance
- Engineering plastic used for plunger bolt drive end and plunger bolt (when specified) has lower coefficient of friction, reducing closing and operating efforts

AVAILABLE:

- With or without plunger bolt for one or multi-point operation
- Single point version is available with a zinc or plastic plunger
- Lock can be keyed to match other TriMark door products with KeyOne™ Plus for a single-key system, keyed alike or provided non-locking
- Housing flange and internal gaskets provided for resistance to water and dirt infiltration
- Linkage rods available for your specific applications



INSTALLATION:

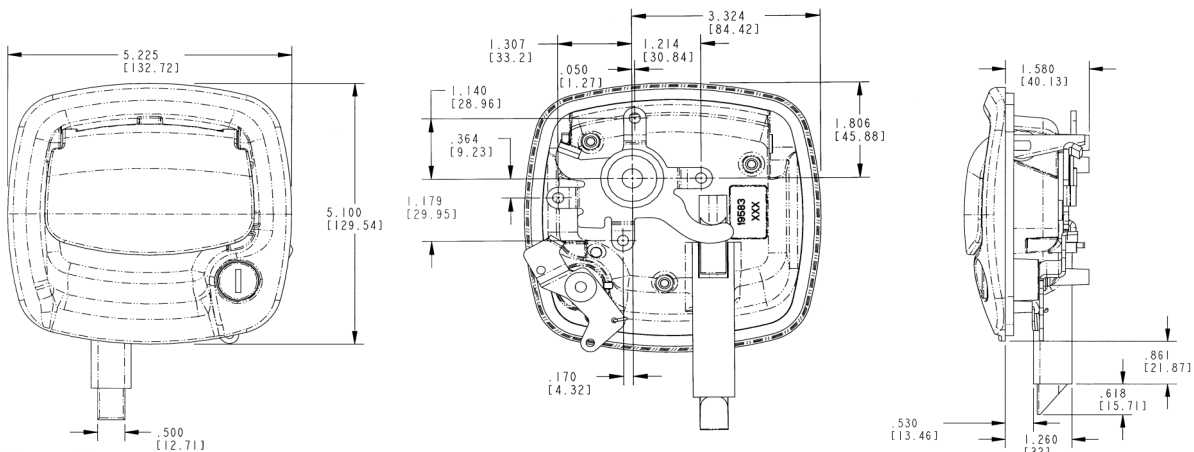
- Handle is easy to install with (3) #8-32 thread forming fasteners (supplied separately)
- Optional mounting bracket and rod allows the power actuator to mount to the handle for ease of installation
- Supplied with gasket already applied under recess in housing flange for simple, clean installation

NOTE: System kits are available and include handles, latches, rods, brackets and power lock actuators to provide a comprehensive electro-mechanical access solution

U.S. Patent No. 7,232,162
Design Patent D519,823

For more information visit
www.trimarkcn.com or
www.trimarkcorp.com

060-0475 Flush Baggage Door e-LOCK		
Part Number	Handing	Description
20356-01	Non-handed	Non-locking, Zinc Plunger
20357-02	Non-handed	Non-locking, Multi-Point
19583-01	Non-handed	KeyOne Plus, Zinc Plunger
20358-03	Non-handed	KeyOne Plus, Multi-Point



060-0800 Slam Action Paddle Assembly

This compartment latch was designed for light to medium duty storage and compartment doors. Available in buffed stainless steel or plated mild steel, this product features a low cost plunger style latch for installation and ease of use.

- Light duty service and utility truck body compartment doors
- Most storage, compartment and access doors

FEATURES/BENEFITS:

- Key locking, keyed random or keyed alike
- Non-locking
- Shuttered key cylinder
- Paddle can be locked before door is shut

AVAILABLE:

- In locking or non-locking configurations
- With and without mounting holes
- Blind mount options

MATERIAL:

- Housing and paddle: 300 series stainless steel or mild steel
- Powder metal plunger



FINISH:

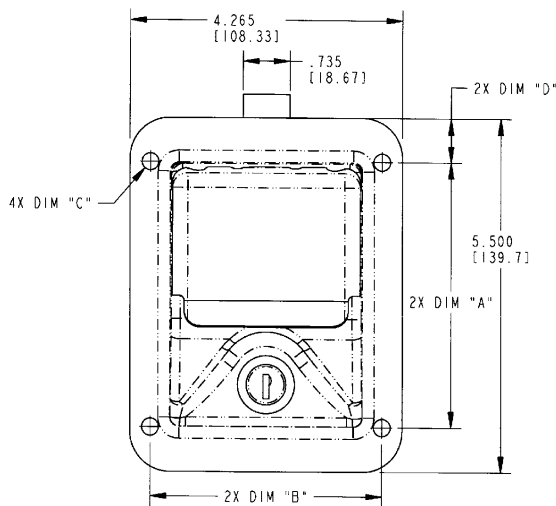
- Buffed and polished stainless steel
- Zinc plated cold rolled steel

INSTALLATION:

- Mounting screws, rivets or welded
- Also available in blind mount option with studs

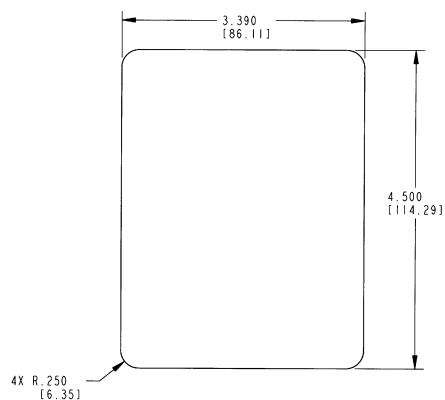
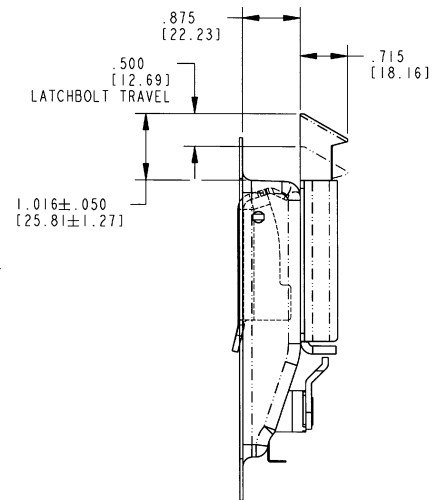
CAUTION: Compartment latch does not comply with FMVSS 206.

060-0800 Slam Action Paddle Assembly		
Part Number	Handing	Description
18919-01	Non-handed	CH501-510, Stainless Steel
18920-01	Non-handed	CH501-510, CRS Clear Zinc



Housing Hole Patterns

Hole Pattern No. -BB	Dim. "A"	Dim. "B"	Dim. "C"	Dim. "D"
-01	N/A	N/A	N/A	N/A
-02	N/A	N/A	N/A	N/A
-03	3.750	3.688	Ø.192	.875
-04	4.125	3.625	Ø.265	.688
-05	3.750	3.688	Ø.192	.875
-06	4.125	3.625	Ø.265	.688



For more information visit
www.trimarkcn.com or
www.trimarkcorp.com

020-0700 Flush Pull Handle

This pull handle was specifically designed for compartment and entrance doors for heavy truck, service truck, ambulance, fire/rescue and off-highway vehicles. It offers ergonomic function and styling, is adaptable for power door lock actuation and has a "free-floating" handle when locked.

- Class 7-8 trucks
- Utility bodies
- Off-highway vehicles (light duty)

FEATURES:

- Ergonomic function and styling
- Can be keyed to match common ignition locks (not included - please inquire)
- Paddle is "free-floating" when locked and used with appropriate latch/linking with lock logic
- Adaptable for power door lock actuator
- Interior or exterior applications
- Housing flange and internal gaskets provided for resistance to water and dirt infiltration

MATERIAL:

- Housing: glass reinforced black nylon, brass threaded mounting studs
- Handle: glass reinforced black nylon
- Pivot plate: mild steel



FINISH:

- Black housing, black nylon handle
- Zinc plated clear chromate steel components

AVAILABLE:

- Right and left hand configurations (right hand shown)
- Locking and non-locking

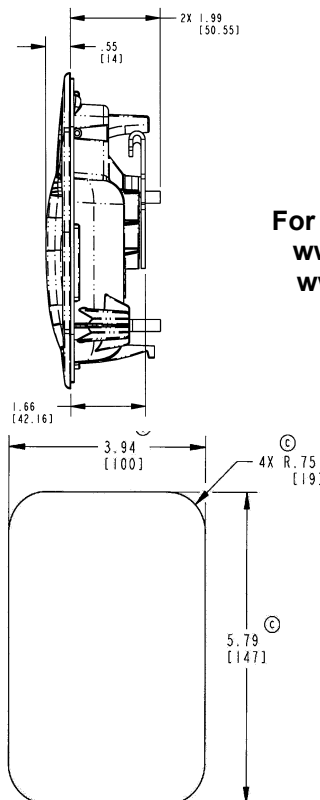
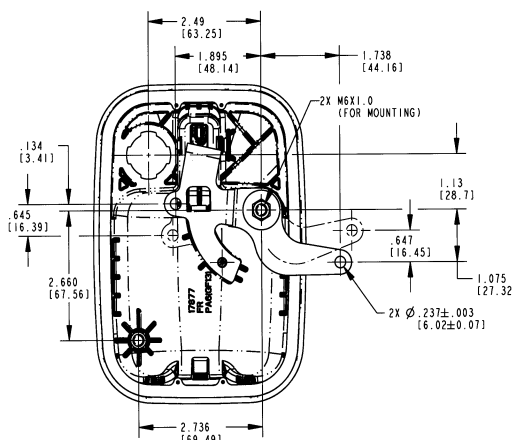
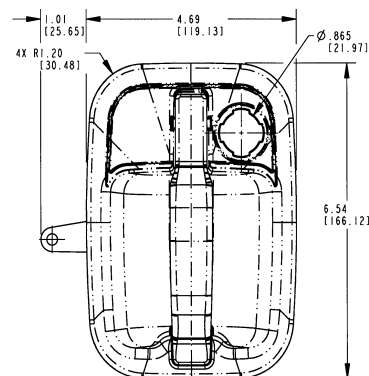
INSTALLATION:

- Easy mounting with (2) M6 nuts
- Recommended mounting fastener torque 30-40 in-lbs (3.3-4.4 N-m)
- Either horizontal or vertical orientation
- Non-handed standard mounting bracket (sold separately)

NOTE: Meets FMVSS 206 locking requirements and may be used in FMVSS 206 applications pending TriMark application approval.

U.S. Patent No. 6,802,544 and 6,805,388
Design Patent No. D489,957

020-0700 Flush Pull Handle		
Part Number	Handing	Description
18608-01	Left	Lock Sold Separately
18609-01	Non-handed	Non-locking
18607-01	Right	Lock Sold Separately



RECOMMENDED CUTOUT

For more information visit
www.trimarkcn.com or
www.trimarkcorp.com

020-0800 Surface Mounted Pull Handle

Designed specifically for off-highway vehicle applications that require a surface mounted exterior handle. This product allows greater ease of operation (ergonomics) than conventional push button or paddle handles and offers robust construction and rugged styling for a very cost effective price in a new handle category.

- Medium to heavy weight doors for off-highway vehicle applications
- Doors with high door seal loads or applications where a surface mounted pull type handle is more desirable than a push button or paddle handle

FEATURES/BENEFITS:

- Full gloved hand clearance
- Exterior surface mount along with the configuration of the actuator allows for mounting in any orientation
- Provides for greater ease of operation (ergonomics) than conventional push button or paddle handles
- Readily adaptable to a variety of door thickness with adjustable connecting link assembly
- Handle is rigid when locked



MATERIAL:

- Handle: glass reinforced nylon
- Brass threaded inserts

AVAILABLE:

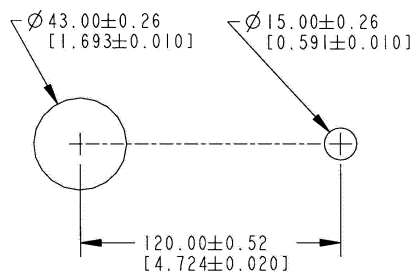
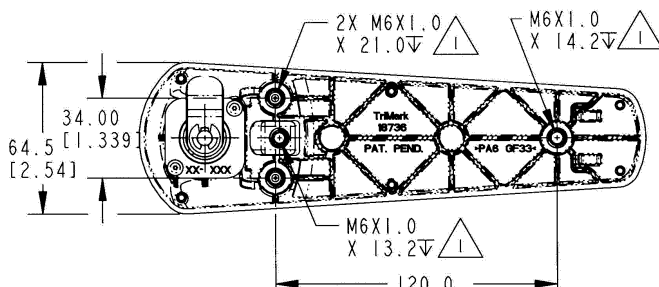
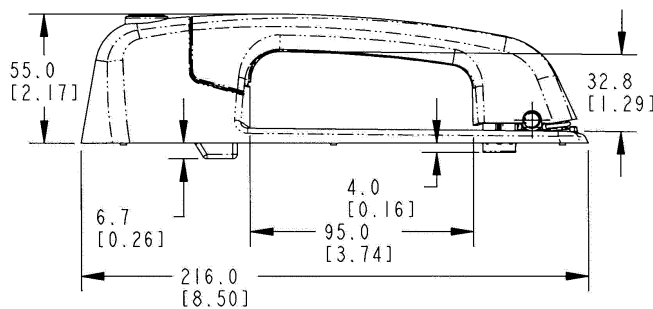
- Can be keyed alike with most single and reversible key systems
- With gaskets and spacers to facilitate mounting and provide resistance to water and dirt infiltration
- Connecting link assembly

INSTALLATION:

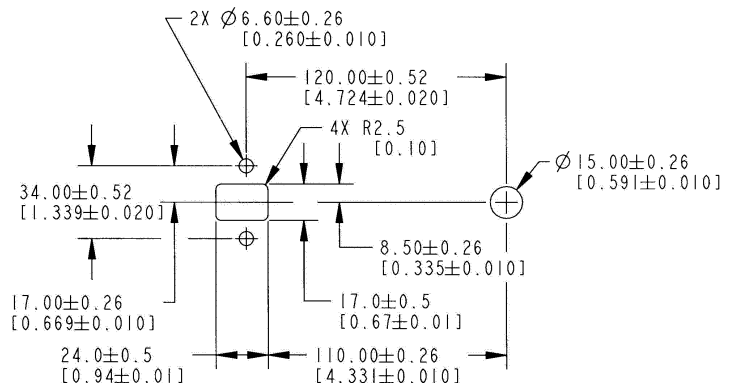
- Mounts against glass with only 2 holes or steel with conventional mounting (see recommended hole pattern)
- Installed with (3) M6 X 1.0 bolts (not included)
- Recommended mounting fastener torque to be 5.6-6.7 N-m (50-59 lbf-in)

CAUTION: Handle does not meet the locking requirements for FMVSS 206

Design Patent No. D506,377



Recommended Glass Mounting Hole Pattern



Recommended Steel Mounting Hole Pattern

020-0800 Surface Mounted Pull Handle		
Part Number	Handing	Description
24652-01	Non-handed	Non-locking
18736-02	Non-handed	CH751 Key Code
18736-04	Non-handed	1463 Merit Key Code

020-0850 e-LOCKING Pull Handle

TriMarks' NEW 020-0850 e-LOCKING Pull Handle for off-road applications allows power locking/unlocking via a switch, remote RF FOB or keypad. Based on the proven 020-0800, this robust pull handle brings a new automotive function and convenience to your cabs and enclosures.

DESIGNED FOR:

- Medium to heavy-duty agricultural and construction personnel doors
- Off-highway vehicle applications that require a direct release surface mounted exterior pull handle

FEATURES/BENEFITS:

- Provides for greater ease of operation (ergonomics) than conventional push button or paddle handles; includes gas-assist molded handle
- Provides the ability to remotely lock the exterior pull handle
- Handle is rigid when locked
- KeyOne™ Plus lock cylinder can be keyed alike with most single and reversible key systems
- Readily adaptable to a variety of door thickness with adjustable connecting link assembly
- Thermally protected 12V motor overload to protect motor against excessive heating

AVAILABLE:

- With perimeter gasket and spacers to facilitate mounting and provide resistance to water and dirt infiltration
- Non-power locking version
- Connecting link assembly

MATERIAL:

- Handle and base: glass reinforced nylon
- Threaded inserts: brass



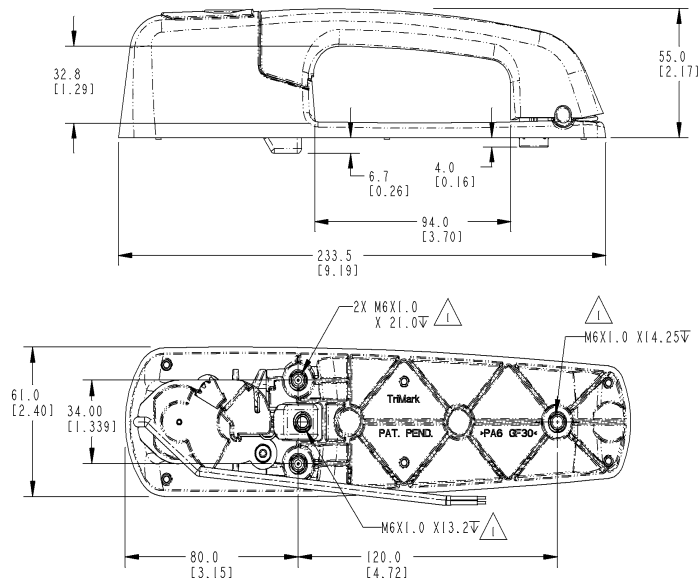
INSTALLATION:

- Same mounting pattern as 020-0800 Pull Handle — mounts against glass with only 2 holes or steel with conventional mounting
- Installed with (3) M6 X 1.0 bolts (not included)
- Recommended mounting fastener torque to be 5.6-6.7 N-m (50-59 lbf-in)

CAUTION: Handle does not meet the locking requirements for FMVSS 206.

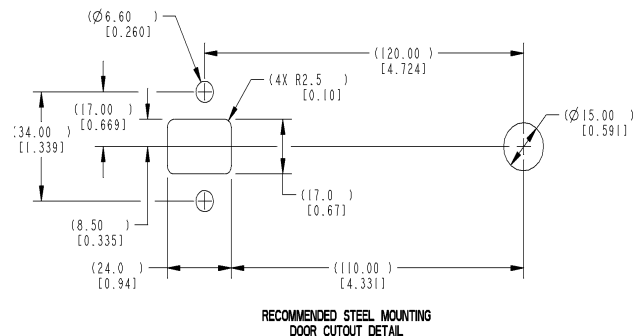
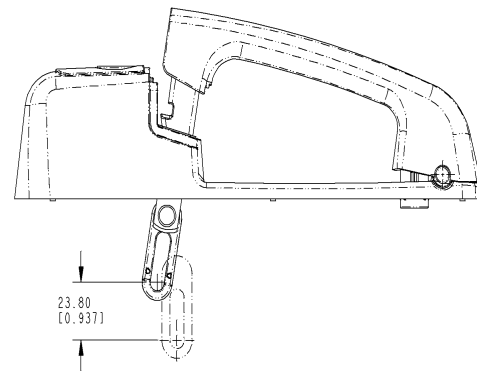
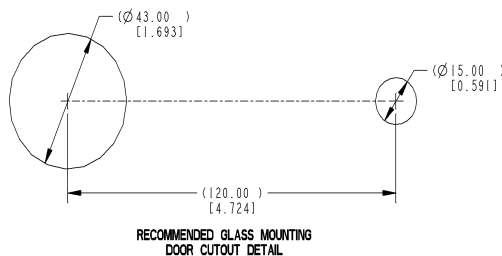
Patent Pending

020-0850 e-LOCKING Pull Handle		
Part Number	Handing	Description
22329-XX	Non-handed	KeyOne Plus, Power Lock, Without Lock Cylinder
22329-04	Non-handed	KeyOne Plus, Power Lock, CH751 Key Code
22329-08	Non-handed	KeyOne Plus, Power Lock, 14603 Merit Key Code



NOTES: UNLESS OTHERWISE SPECIFIED;

△ RECOMMENDED APPLICATION TORQUE TO BE 5.6-6.7 N-m [50-59 Lbf-IN].



040-0600 TriMount Push Button Handle

The 040-0600 TriMount Push Button Handle was specifically designed for off-highway vehicle applications that require a surface mounted exterior push button handle with 120mm or 163mm mounting pattern. It is retrofitable with most European push button handles and offers robust construction, ergonomic function and styling for a very cost effective price.

FEATURES/BENEFITS:

- Universal mounting is available in 3 different mounting configurations: 2 bolt 120mm, 3 bolt 120mm and 2 bolt 163mm mounting
- Frictionless push button seal
- Readily adaptable to a variety of door thickness with an adjustable bolt and nut
- Full gloved hand clearance
- 15.88mm (.625) button travel
- Easy to operate (ergonomics)

MATERIAL:

- Handle: glass reinforced nylon
- Brass threaded inserts



AVAILABLE:

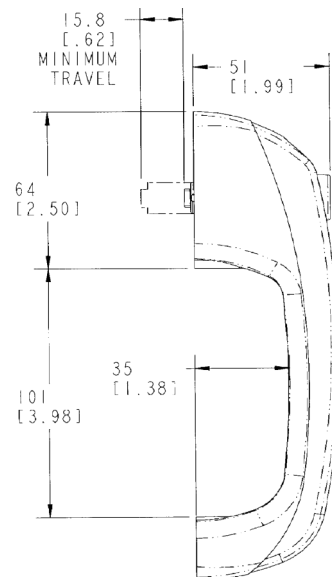
- Can be keyed alike with most single and reversible key systems or non-locking configurations
- Locked rigid or free-floating versions
- With bezels or gasket sets to facilitate mounting and provide resistance to water and dirt infiltration (sold separately)

INSTALLATION:

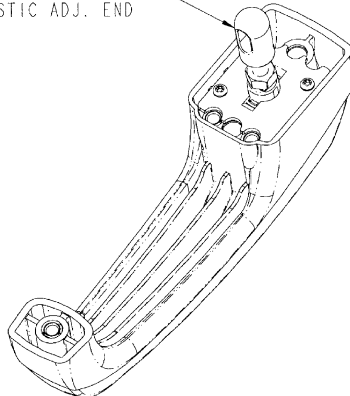
- Installed with (2 or 3) M6 X1.0 bolts (not included)
- Mounts against glass with only 2 holes
- Recommended mounting fastener torque to be 5.6 - 6.7 N-m (50-59 lbf-in)

Design Patent No. D461,391

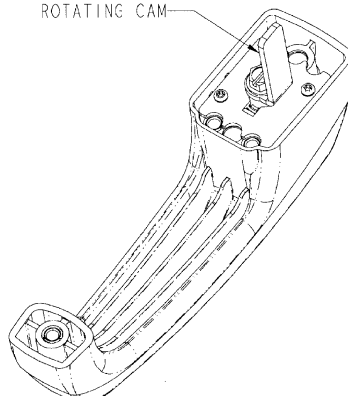
040-0600 TriMount Push Button Handle		
Part Number	Handing	Description
19466-07	Non-handed	CH751 Key Code
19466-03	Non-handed	John Deere D250 Key Code
19466-10	Non-handed	CAT Key Code
19466-18	Non-handed	TA 183 Key, Adjustable Bolt
19466-02	Non-handed	14603 Merit Key Code



ADJUSTABLE BOLT, NUT AND PLASTIC ADJ. END



ROTATING CAM



For more information visit
www.trimarkcn.com or
www.trimarkcorp.com

040-1400 Push Button Center Control

This handle was designed for toppers, lift-gate and baggage doors and features a push button actuation and a two-point bellcrank linkage. Installation is easy with either a threaded panel nut or spring clip.

- Door thickness up to 1/4" (6.35mm)

FEATURES/BENEFITS:

- Push button actuation versus typical twist action
- Durable and weather resistant construction
- Ergonomically shaped finger pull
- Housing flange gasket, push button o-ring and shuttered keyplug for reducing water and dirt infiltration
- Bypass lock mechanism allows push button to free-travel when locked for added security

INSTALLATION:

- 1-1/8" (28.6mm) panel nut to secure escutcheon to the door
- Spring clip to attach linkage to escutcheon

MATERIAL:

- Housing, push button and mounting nut: die cast zinc
- Linkage, finger pull and lock cam: mild steel



FINISH:

- Escutcheon and finger pull: black powder coated
- Push button: buffed chrome or black powder coated
- Steel components: zinc plated with chromate conversion coating

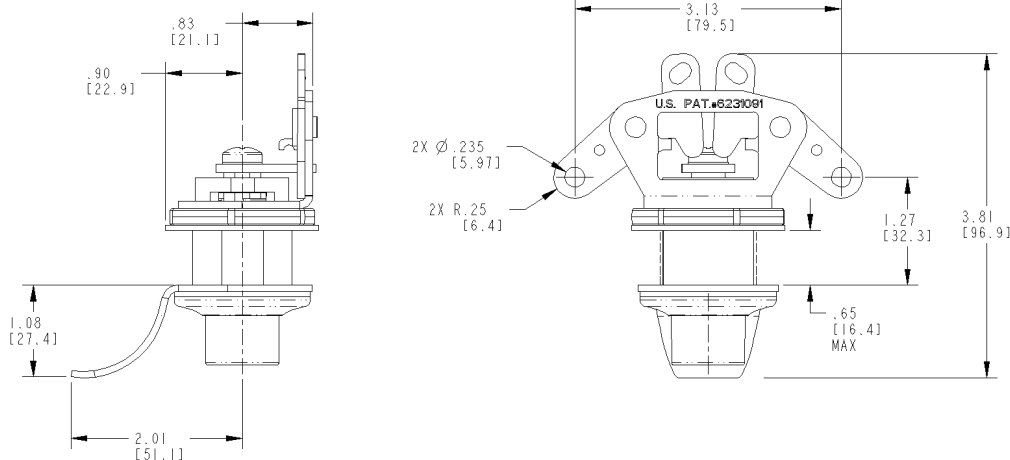
AVAILABLE:

- Custom finger pulls (please inquire)
- Optional anti-spin washer
- Keyed random. Over 50 key codes available
- Without bellcrank linkage as stand alone push button
- Handle can be keyed to match other TriMark door products with KeyOne™ Plus for a single-key system, keyed alike or provided non-locking



U.S. Patent No. 6,231,091

040-1400 Push Button Center Control		
Part Number	Handing	Description
22650-01	Non-handed	Contact Sales for Key Code Options
22814-01	Non-handed	Finger Pull Accessory
22430-01	Non-handed	Bell Crank Accessory



For more information visit
www.trimarkcn.com or
www.trimarkcorp.com

010-0100 Release Lever

Designed for an inside release for the use on L-handles, this product offers a simple low cost handle for use on rotating drive bar applications.

AVAILABLE:

- With 5/16" square hole at 90 degree and 45 degree orientation

MATERIAL:

- Die cast zinc alloy

FINISH:

- Mill—unplated
- Copper-nickel chrome plated
- Black powder coated

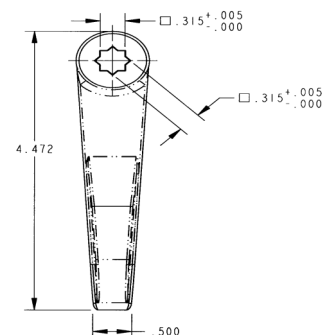
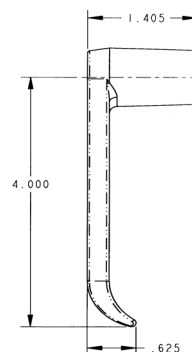
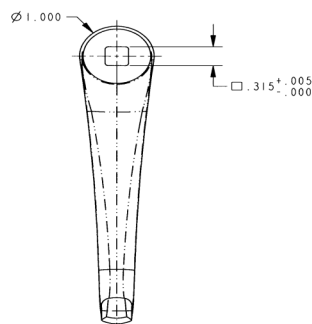
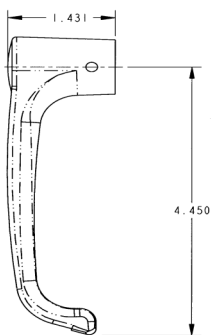
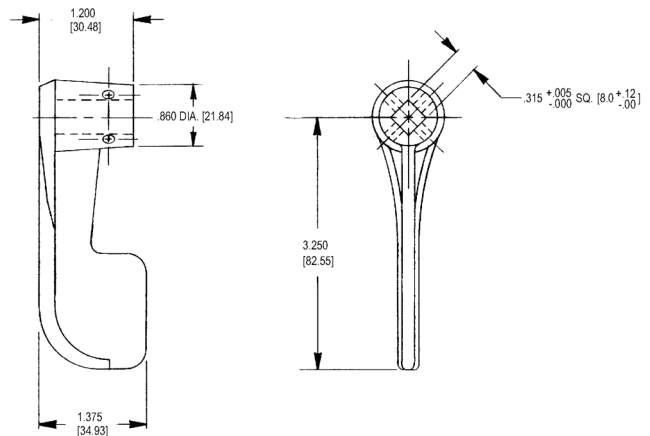
INSTALLATION:

- .156" (4.0mm) diameter roll pin (not included)
- 5/16" diameter set screw



010-0100 Release Lever		
Part Number	Handing	Description
10103-12	Right	Style 1
10042-09	Right	Style 2
10044-12	Right	Style 3

For more information visit
www.trimarkcn.com or
www.trimarkcorp.com



010-0200 Non-Locking / 010-0300 Locking L-Handle

Non-locking L handles provide simple interior/exterior rotating handle functions for surface mounted applications.

- General purpose use for off-highway cab doors or storage, compartment and access doors for on or off-highway applications

FEATURES/BENEFITS:

- Ample finger clearance
- Easily installed with oval or flat head No. 10 fasteners (not included)
- Locking L-handle assembly provides 360° rotation and locks at 90° increments

AVAILABLE:

- Mounting hole patterns and escutcheons (bases) for different finger clearances
- Drive bar lengths, with or without holes or threaded rods
- Keyed CH751 and other key codes
- Drive bar attached to handle by drilling and pinning
- Locking or non-locking:
 - Standard finger clearance (Type 1 and 2)
 - Extended finger clearance (Type 4)
 - Low profile (Type 3)
- 1.50 or 1.75 mounting hole spacing



SPECIFY WHEN ORDERING:

- Series number
- Escutcheon type
- Drive bar length (L1) and optional hole location (L2)

FINISH:

- Handle and escutcheon: copper-nickel chrome plated; or black powder coated
- Drive bar: mill finish

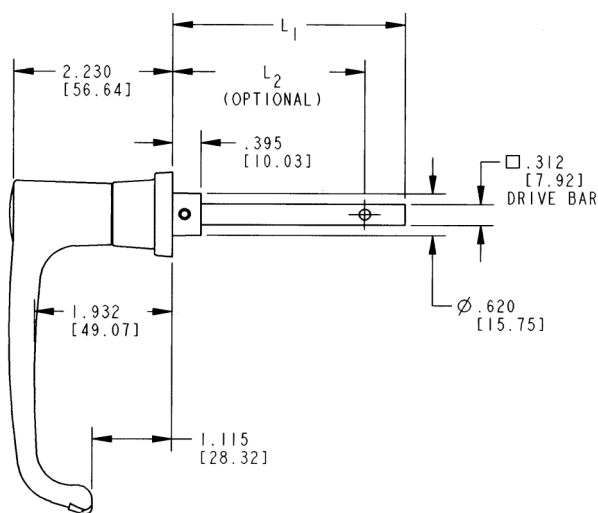
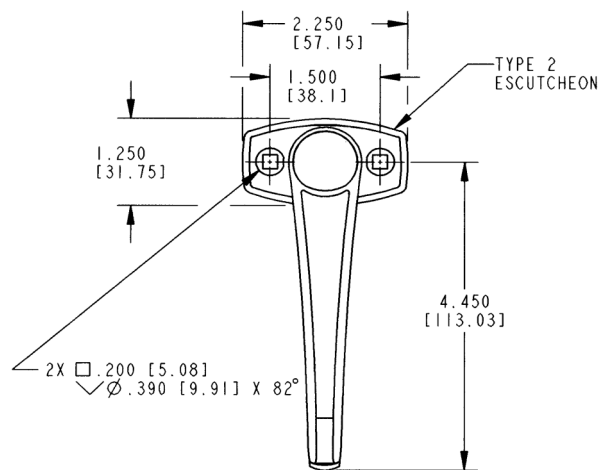
MATERIAL:

- Handle and escutcheon: die cast zinc alloy
- Drive bar: mild steel

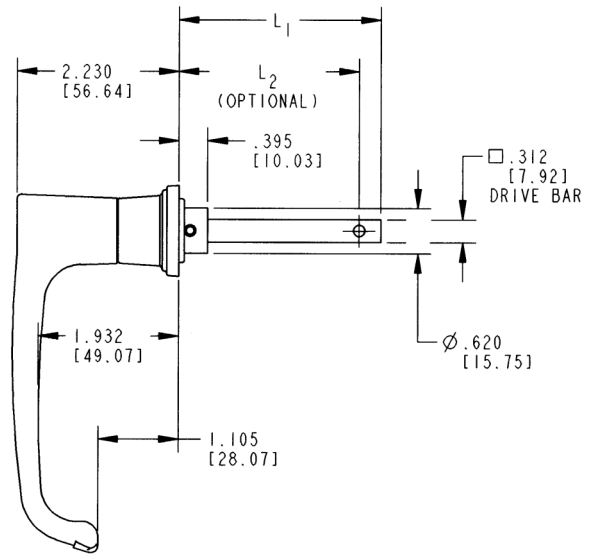
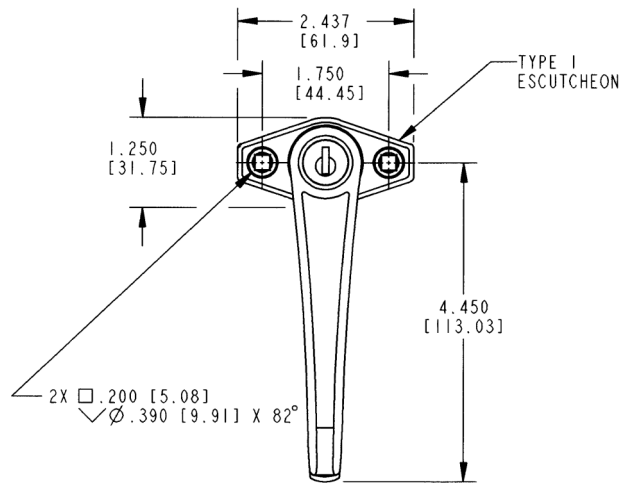
010-0200 Non-locking L-Handle		
Part Number	Handing	Description
10460-01	Non-handed	Type 1, Chrome Finish
10270-05	Non-handed	Type 3, Chrome Finish
11425-5	Non-handed	Type 4, Chrome Finish

For more information visit
www.trimarkcn.com or
www.trimarkcorp.com

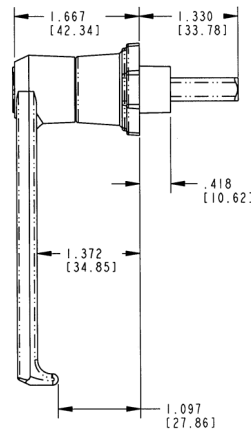
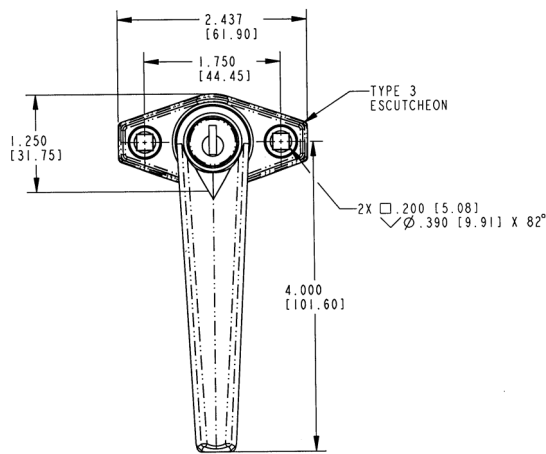
Standard Finger Clearance (Type 1)



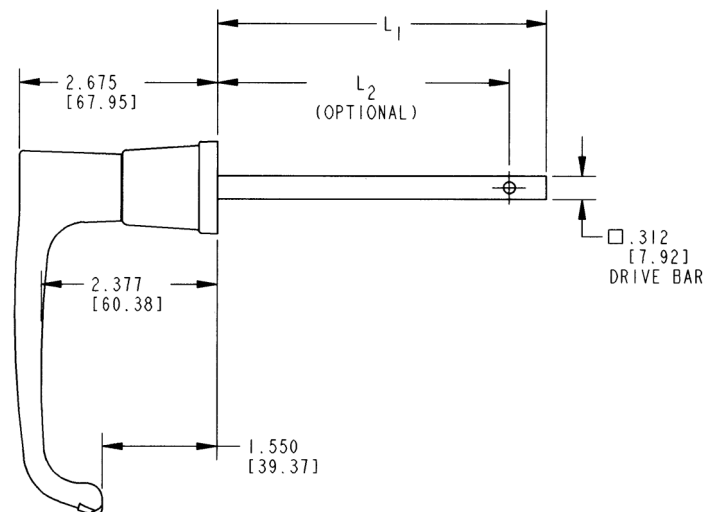
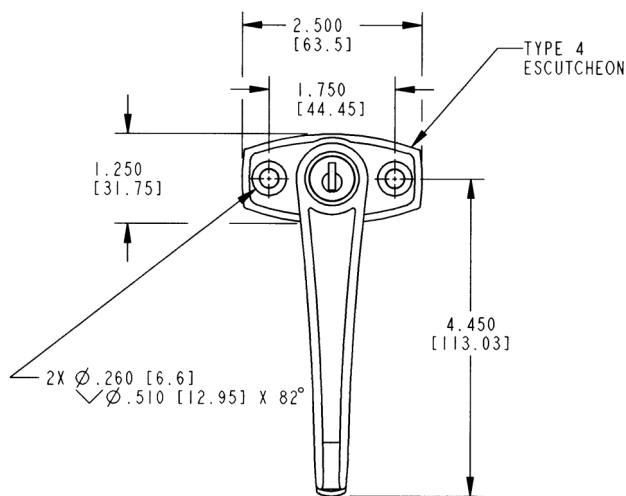
Standard Finger Clearance (Type 2)



Low Profile (Type 3)



Extra Finger Clearance (Type 4)



010-0600 Flush Mounted Pop-Up T-Handle

This handle was designed for toppers, liftgate and baggage doors where 1/4 turn cam locking is desired. It features a low profile handle that pops up when actuated for ease of use and is available in several rotations, drive bar lengths and finishes.

- Garage doors, storage and access doors
- Any application where low profile hardware is important

FEATURES/BENEFITS:

- Flush mounted - when "T" handle is depressed, rivets and fastener heads are concealed
- Rubber gasket under base provides resistance to water infiltration

AVAILABLE:

- Key lockable with 50 key codes available or keyed alike. Non-locking version is also available
- 1, 2, or 3-point locking
- 90° or 150° rotation
- 2.500" or 3.500" drive bar lengths
- Clockwise or counterclockwise rotation

010-0600 Flush Mounted Pop-Up T-Handle		
Part Number	Handing	Description
22457-01	Non-handed	Counterclockwise (Left), Non-locking
11739-03	Non-handed	Clockwise (Right), Non-locking



MATERIAL:

- Shuttered keyway: stainless steel
- All major components: zinc alloy
- Drive bar: zinc plated steel
- Internal (2) springs: stainless steel

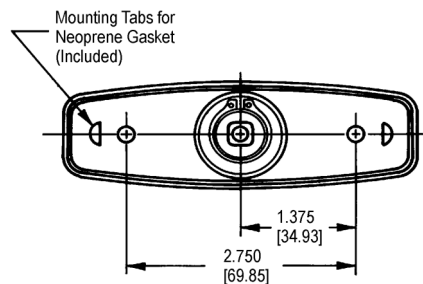
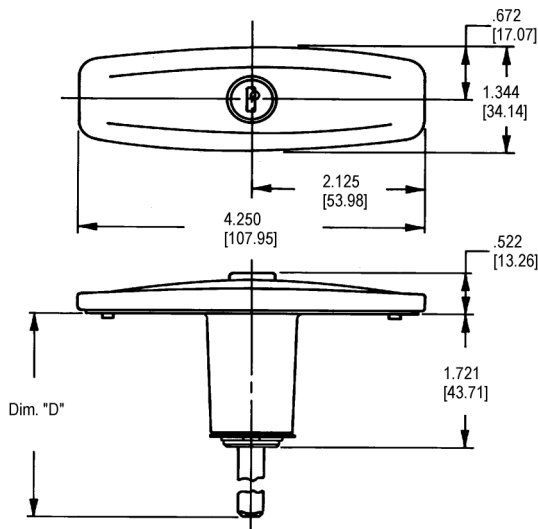
FINISH:

- Black powder coated or white

INSTALLATION:

- Easy installation with (2) No. 10 fasteners or rivets
- Recommended door mounting - 1.125 diameter thru hole

U.S. Patent No. 4,689,976

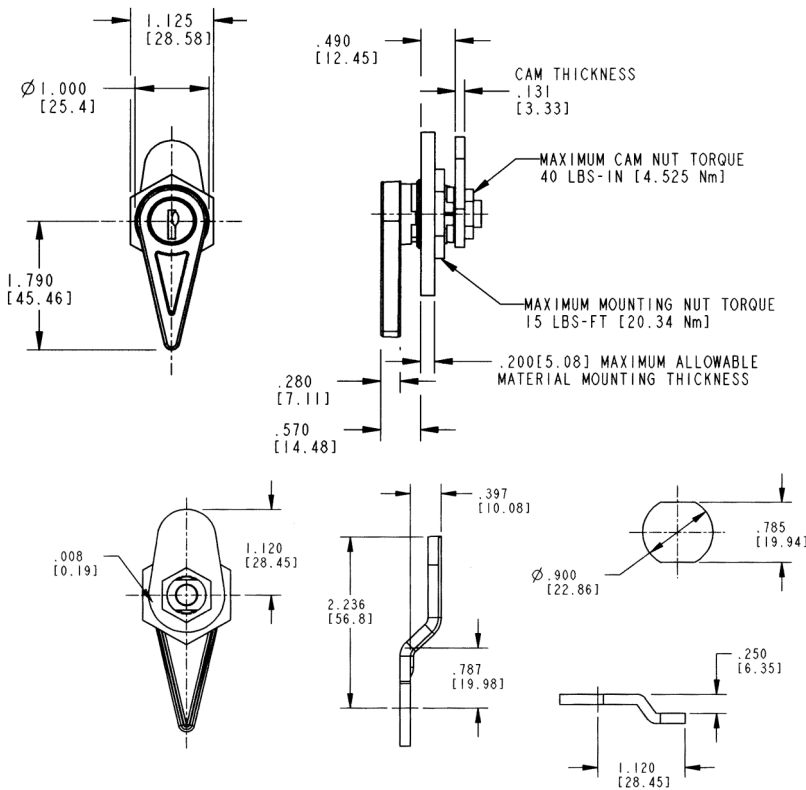


DRIVE BAR CHART Dimension "D"
2.500 [63.5]
3.500 [88.9]

For more information visit
www.trimarkcn.com or
www.trimarkcorp.com

010-0700 Light Duty Compartment Latch

This handle was designed for small compartment and access doors and tool boxes where 1/4 turn cam locking is desired. Available in both locking and non-locking, the non-locking version features a detent function in both the latched and unlatched positions.



AVAILABLE:

- Locking configuration: keys furnished with assembly
- Non-locking configuration: detent in latched and unlatched positions
- 90° rotation

MATERIAL:

- Handle: die cast zinc alloy
- Cam: zinc plated steel

FINISH:

- Copper-nickel-chrome plated
- Black powder coated

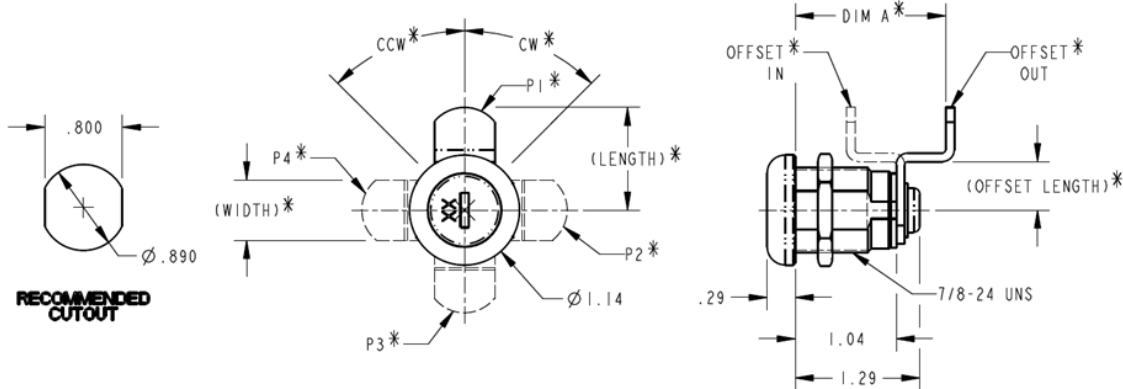
INSTALLATION:

- Supplied either fully assembled or bagged with cam and nuts packaged loose
- Removal of cam and 7/8-28 mounting nut is required for installation. IMPORTANT: Note maximum nut torque specifications on drawing



010-0700 Light Duty Compartment Latch		
Part Number	Handing	Description
12043-01	Non-handed	CH751 Key Code

Cam Lock Assemblies

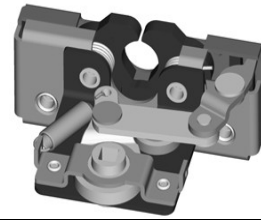


* APPLICATION ITEMS (SEE STANDARD CAMS)

Assembly Number	Cam Number	Cam Position (P1,P2,P3,P4)	Cam Rotation		Offset Direction (Out/In)	Lock Supplied (Yes/No)	Key Code	Keys Supplied	
			Direction (CW/CCW)	Value (90°/180°)				Yes/No	(Qty)
16854-01	16845-01	P2	CCW	90°	Out	No	N/A	N/A	-
16874-01	16848-01	P2	CCW	90°	N/A	No	N/A	N/A	-
16875-01	16849-01	P2	CCW	90°	In	No	N/A	N/A	-
16879-01	16846-01	P4	CCW	90°	In	No	N/A	N/A	-
19488-01	19487-01	P1	CCW	90°	In	Yes	2001	No	-
19926-01	19916-01	P4	CCW	90°	Out	Yes	2001	No	-
23289-01	23288-01	P2	CCW	90°	In	No	N/A	N/A	-
24177-01	24176-01	P1	CCW	90°	In	Yes	1011	No	-

050-0150 Two-Rotor Latch & Release Linkage

This 2-rotor latch is designed for medium to heavy-duty applications for off highway entrance doors. It features an integrated linkage that allows for direct L handle actuation and provides for ease of mounting and applications.



DESIGNED FOR:

- Door thicknesses of 1-7/8" or greater
- Door weights of 50-200 lbs.
- Door seal pressures of 50-150 lbs. (suggested for best results)

AVAILABLE:

- In left or right hand configurations (right hand shown)
- With drive bar receiver parallel to striker bolt or rotated in 15° increments (as illustrated)

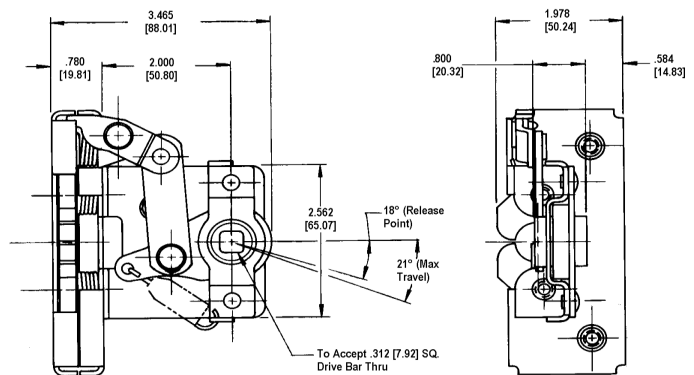
INSTALLATION:

- Four 1/4-20 UNC grade 5 mounting fasteners (not included).
- Tighten to the fastener manufacturers' recommended torque value, however, do not exceed 120 in-lbs
- Maximum .312 (7.9mm) diameter mounting holes

CAUTION: Linkages do not comply with locking requirements of FMVSS 206.

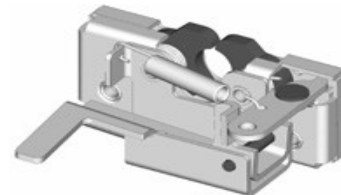
NOTE: Latch complies with FMVSS 206 in primary and secondary latching positions when tested with approved

050-0150 Two-Rotor Latch & Release Linkage		
Part Number	Handing	Description
11442-16	Left	1/4-20 UNC, 2.00 Bracket With Remote Release .668
11749-16	Left	1/4-20 UNC, 2.00 Bracket
11443-16	Right	1/4-20 UNC, 2.00 Bracket With Remote Release .668
11459-16	Right	1/4-20 UNC, 2.00 Bracket



050-0170 Two-Rotor Latch With Bellcrank Linkage

The 050-0170 features an integrated linkage that allows for direct push button actuation and direct inside release and provides for ease of mounting and applications.



DESIGNED FOR:

- Door thicknesses of 1-7/8" (47.6mm) or greater
- Door weights of 50-200 lbs. (23-91 kg)
- Door seal pressures of 50-150 lbs. (23-68 kg) (suggested for best results)

AVAILABLE:

- In left or right hand configurations (left hand shown)
- With (4) 1/4-20 UNC or M6 X 1 threaded axles
- With inside release lever options and trip lever options

INSTALLATION:

- Four 1/4-20 UNC grade 5 or M6 X 1 class 8.8 mounting fasteners (not included).
- Tighten to the fastener manufacturers' recommended torque value, however, do not exceed 120 in-lbs (13.3 N-m)
- Maximum .281 (7.1mm) diameter mounting holes

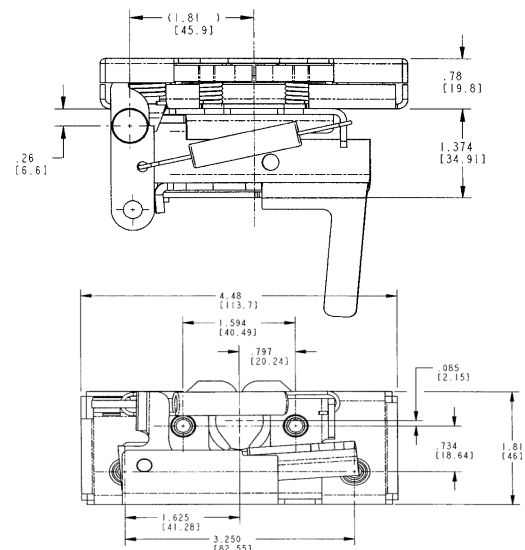
FINISH:

- Zinc plated, clear chromate steel components

MATERIAL:

- Internal latch components: heat treated, smooth edge stamped steel
- Case halves: high strength steel
- Springs: non-corrosive stainless steel

050-0170 Two-Rotor Latch with Bellcrank Linkage		
Part Number	Handing	Description
18036-01	Right	M6 X 1.0, Finger Release Straight, Right Hand Actuator
18035-01	Left	M6 X 1.0, Finger Release Straight, Left Hand Actuator



070-0100 .500 (12.7mm) Diameter Striker Bolt

Designed as a companion part for use with TriMark's single rotor latches and cage nuts that requires a .500 (12.7mm) diameter striker bolt and compliance to FMVSS 206. It is available in a variety of lengths with several drive details and mounting thread choices.

INSTALLATION:

- Torque to 35 ft-lbs (46.7 N-m) minimum depending upon surface conditions

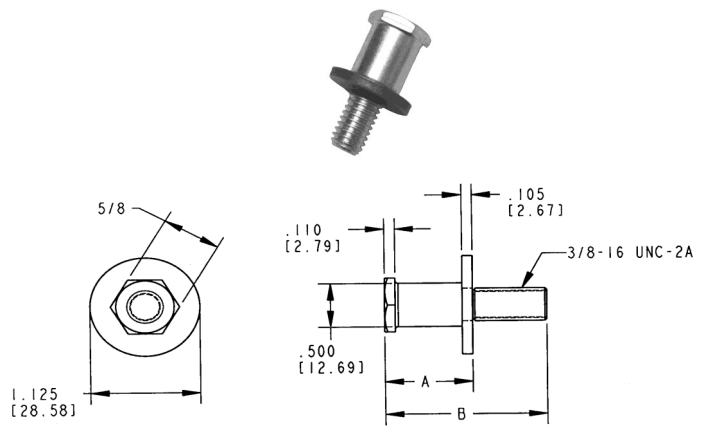
MATERIAL:

- Typical materials include AISI 4140 and AISI C10B21 steel (or equivalent), heat treated to TriMark ES-141

FINISH:

- Zinc plated with clear chromate

For more information visit
www.trimarkcn.com or
www.trimarkcorp.com



* Dimension "A"	Dimension "B"
.905 [22.99]	1.465 [37.21]
.905 [22.99]	1.665 [42.29]
.905 [22.99]	2.630 [66.80]
1.045 [26.54]	1.805 [48.85]

* WASHER DEFLECTED TO INSTALLED DIMENSION

TRIMARK STRIKER BOLTS ARE DESIGNED AND TESTED TO MEET OR EXCEED FMVSS 206 SAFETY REQUIREMENTS ONLY WHEN USED WITH TRIMARK'S CORRESPONDING 206 COMPLIANT LATCHES.

070-0200 .675 (17.1mm) Diameter Striker Bolt

Designed as a companion part for use with TriMark's single rotor latches and cage nuts that requires a .675 (17.1 mm) diameter striker bolt and compliance to FMVSS 206. It is available in a variety of lengths with several drive details and mounting thread choices.

MATERIAL:

- Typical materials include AISI 4140 and AISI C10B21 steel (or equivalent), heat treated to TriMark ES-141

INSTALLATION:

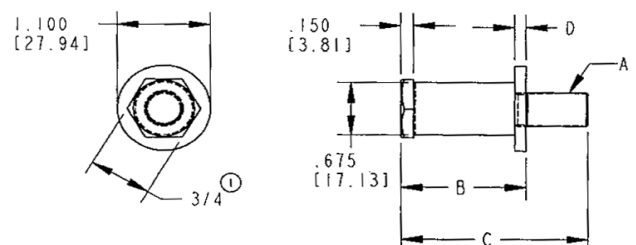
- Torque 7/16-14 UNC-2A to 56 ft-lbs (74.7 N-m) minimum depending upon surface conditions
- Torque 1/2-13 UNC-2A to 85 ft-lbs (113.3 N-m) minimum depending upon surface conditions
- Torque M12 X 1.75-6g to 75 ft-lbs (100.0 N-m) minimum depending upon surface conditions

FINISH:

- Zinc plated with clear chromate



DIMENSION "A"	DIMENSION "B"	DIMENSION "C"	DIMENSION "D"
7/16-14 UNC-2A	0.984 [24.99]	1.715 [43.56]	0.134 [3.40]
7/16-14 UNC-2A	0.984 [24.99]	2.025 [51.44]	0.134 [3.40]
7/16-14 UNC-2A	1.484 [37.69]	2.215 [56.26]	0.134 [3.40]
7/16-14 UNC-2A	1.700 [43.18]	2.750 [69.85]	0.134 [3.40]
7/16-14 UNC-2A	1.174 [29.82]	1.905 [48.39]	0.134 [3.40]
1/2-13 UNC-2A	1.198 [30.43]	2.048 [52.02]	0.150 [3.81]
1/2-13 UNC-2A	1.582 [40.18]	2.362 [59.99]	0.150 [3.81]
M12 X 1.75-6g	1.000 [25.40]	1.732 [43.99]	0.150 [3.81]
M12 X 1.75-6g	1.489 [37.82]	2.205 [56.01]	0.150 [3.81]
M12 X 1.75-6g	2.209 [56.11]	3.110 [78.99]	0.150 [3.81]
M12 X 1.75-6g	2.950 [74.93]	3.820 [97.03]	0.150 [3.81]



For more information visit
www.trimarkcn.com or
www.trimarkcorp.com

070-0300 .375 (9.5mm) Diameter Striker Bolt

Designed as a companion part for use with TriMark's single rotor latches and cage nuts that requires a .375 (9.5mm) diameter striker bolt. It is available in a variety of lengths with several drive details and mounting thread choices.

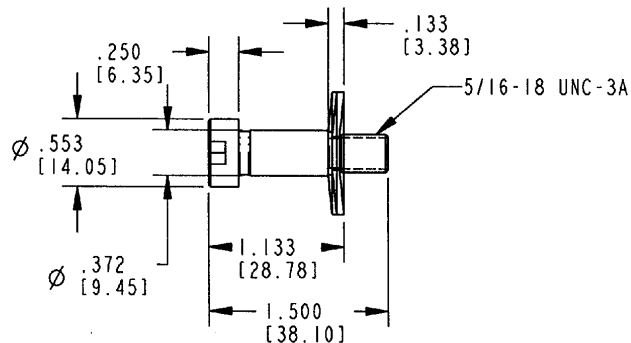
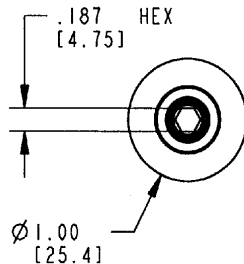
MATERIAL:

- Striker bolt: medium carbon steel, heat treated
- Washer: mild steel

FINISH:

- Striker bolt: zinc plated with clear chromate
- Washer: galvanized zinc

NOTE: Does not comply with FMVSS 206



TRIMARK STRIKER BOLTS ARE DESIGNED AND TESTED TO MEET OR EXCEED FMVSS 206 SAFETY REQUIREMENTS ONLY WHEN USED WITH TRIMARK CORRESPONDING 206 COMPLIANT LATCHES.

070-0400 12mm Diameter Striker Bolt

Designed as a companion part for use with TriMark's single rotor latches and cage nuts that requires a 12mm diameter striker bolt.

MATERIAL:

- AISI 4140 steel heat treated

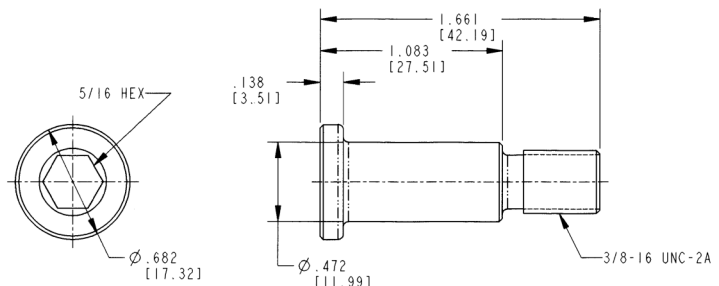
INSTALLATION:

- Torque to 35 ft-lbs (46.7 N-m) minimum depending upon surface conditions

FINISH:

- Zinc plated with clear chromate

For more information visit
www.trimarkcn.com or
www.trimarkcorp.com



100-0410 Cage Nut

Designed as a companion part for use with TriMark's striker bolts, this product allows for vertical and horizontal adjustment for most striker bolts with 3/8-16 or 7/16-14 threads. It is available as a one-piece assembly or as separate parts for lowest cost and is FMVSS 206 compliant.

AVAILABLE:

- 3/8-16 or 7/16-14 threads
- Up to .250" (6.4mm) total vertical and .125" (3.2mm) total door seal adjustment
- One piece assembly for simplified installation
- Nut and retainer available separately for lowest cost

INSTALLATION:

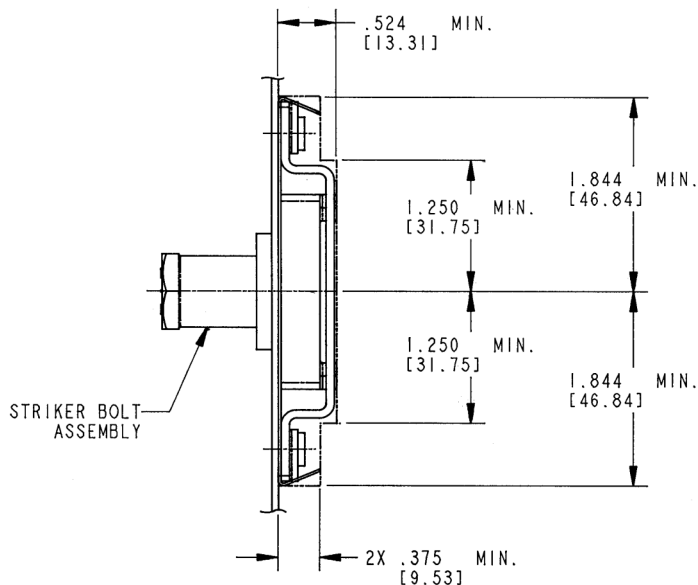
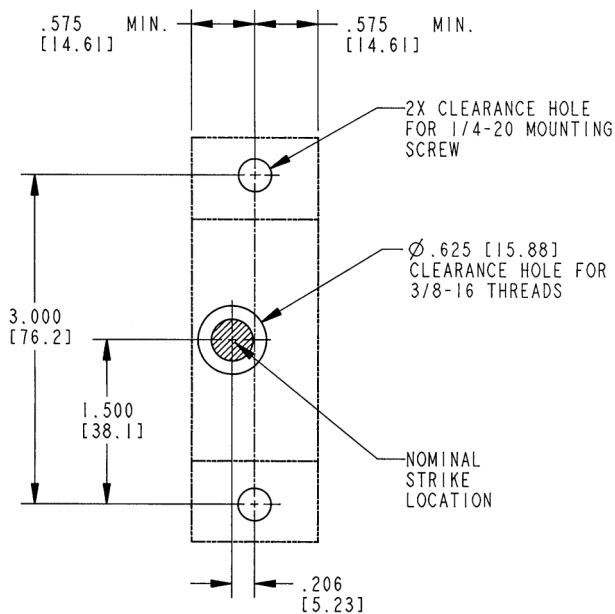
- Mounts with standard 1/4-20 screws (not included)
- Striker bolt mounting close to edge to allow use in applications where striker bolt is close to the frame edge



NOTE: Steel nut withstands tensile loads applied to striker bolt in excess of 2500 lbs (1134 kg) as required by FMVSS 206.

TOGETHER THE CAGE NUT AND STRIKER BOLT MEETS OR EXCEEDS FMVSS 206 LOAD REQUIREMENTS.

100-0410 Cage Nut		
Part Number	Handing	Description
11920-16	Non-handed	3/8-16 UNC
12111-16	Non-handed	7/16-14 UNC



For more information visit
www.trimarkcn.com or
www.trimarkcorp.com

090-0100 Rod Clips

Designed to facilitate the connection between the latch and handles with rods for remote actuation and provides for easy assembly.

AVAILABLE:

- In right and left hand, or non-handed design
- In a variety of diameters, materials and configurations

INSTALLATION:

- Provides for easy assembly of hardware

MATERIAL:

- Medium carbon steel, heat treated and parkerized black for extra strength and corrosion resistance
- Color coded nylon for rattle free operation and ease of identification

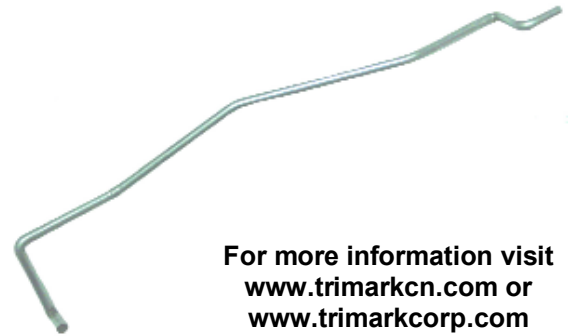


090-0100 Rod Clips		
Part Number	Handing	Description
81082-00	Right	Spring Steel 5mm Rod, 3mm Material Thickness
80801-00	Right	Spring Steel, 6mm Rod, 4mm Material Thickness
81081-00	Left	Spring Steel, 5mm Rod, 3mm Material Thickness
80802-00	Left	Spring Steel, 6mm Rod, 4mm Material Thickness
81387-00	Non-handed	Plastic, 4mm Rod, 2.3mm Material Thickness
81388-00	Non-handed	Plastic, 4mm Rod, 3.6mm Material Thickness

090-0150 Rods

Manufactured on a computer controlled rod bender for conformance to quality and repeatability

- Multiple bend capability including compound bend angles
- Available in pre-plated steel rod diameters:
 - .125 (3.2mm)
 - .168 (4.3mm)
 - .214 (5.4mm)
 - .390 (9.9mm)
- Other rod diameters are available as a special request (please inquire)
- Secondary operations including threading and swaging are available
- Prototype orders and small production runs are welcome



For more information visit
www.trimarkcn.com or
www.trimarkcorp.com

100-0800 Rod Collars

Designed to facilitate the connection between the latch and handles for remote actuation. This product provides for easy assembly and adjustability of hardware.

AVAILABLE:

- In two styles; staked-on retention and an easy clip-on retainer

MATERIAL:

- Die cast zinc, machined steel, aluminum or stainless steel

FINISH:

- Die cast zinc collars - clear chromate steel collars - zinc plate/clear chromate



INSTALLATION:

- Rod collars can be pre-installed by TriMark or attached at the point of door assembly

Rod collars are not intended or recommended for use in applications that require FMVSS 206 compliance or applications that have heavy or extreme striker bolt loads (> 25 lbs / 11 kg) and/or high to extreme usage (> 100,000 door cycles/life).

TriMark's e-ASK System (electronic Access & Security Keyless-entry)

500-1000 e-ASK System

TriMark's top level e-ASK system consists of a selection of compatible components that allow for complete keyless entry for on or off-highway vehicle applications. Incorporation into TriMark mechanical latches, handles and systems by providing keyless-entry, security, and convenience for access door systems. This system includes the ultimate in end user convenience and functionality.



500-1100 e-FOB System

The integration of mechanical handles/latches and keyless-entry electrical products is now available with TriMark's e-ASK System. This cost-effective, simple, and integrated system offers increased security, convenience and functionality with reduced system installation complexity and lower installation costs for demanding users of RVs, heavy trucks, emergency vehicles, agricultural and construction equipment.

Base system provides added convenience and security via a standard remote radio frequency (RF) transmitter providing automotive convenience to your vehicle.

500-1200 e-PAD System

The integration of mechanical handles/latches and keyless-entry electrical products is now available with TriMark's e-ASK System. This integrated system offers increased security, convenience and functionality with reduced system installation complexity and lower installation costs for demanding users of RVs, heavy trucks, emergency vehicles, agricultural and construction equipment.

User-friendly keypad system provides visual, audible and touch feedback. Keypad can be mounted horizontally, vertically, and with means to protect against vandalism and other tampering. This system includes both a touch pad and an I/O module for the ultimate in keyless functionality.



West Alloy

We are pleased to announce that on September 20, 2007 TriMark Europe Ltd, a subsidiary of TriMark Corporation, have acquired West Alloy Ltd. Located in the UK, West Alloy is a market leader in the design and manufacture of locks, hinges, window stays and associated fittings for the world's best-known industrial and leisure vehicles.

West Alloy has built a sound reputation for on-time delivery of quality products.

For more information on West Alloy's range of products, contact West Alloy at: +44(0)20883372211 or visit www.westalloy.com



Caraloc Assembly (2000)



Single Key System



Camloc Assembly (730)



Baggage Door Lock (5280) With Various Cams

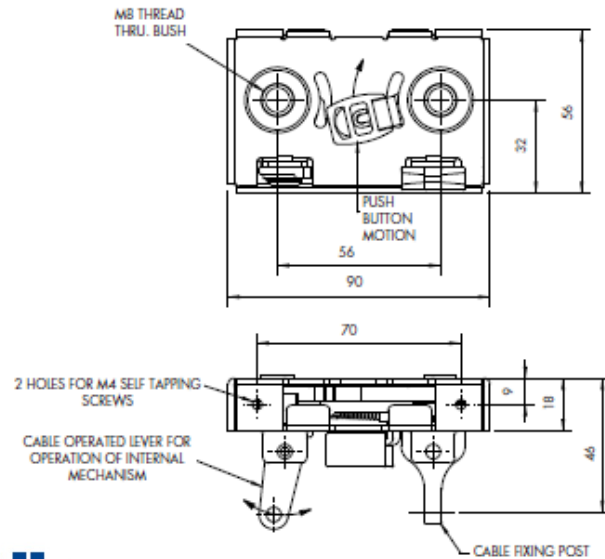
Heavy Duty Anti-Burst Latch Assembly

Part Number: 8100

- Opposite Hand Part Number: 8105
- Stronger version of anti-burst interior latch, can be operated remotely from the interior by cable or rod.
- Designed for use with various exterior push button handle assemblies.
- Tested and approved to FMVSS 206/SAE J839 section 4.1 latch strength testing.



West Alloy



Anti-Burst Interior Latch

Part Number: 8200

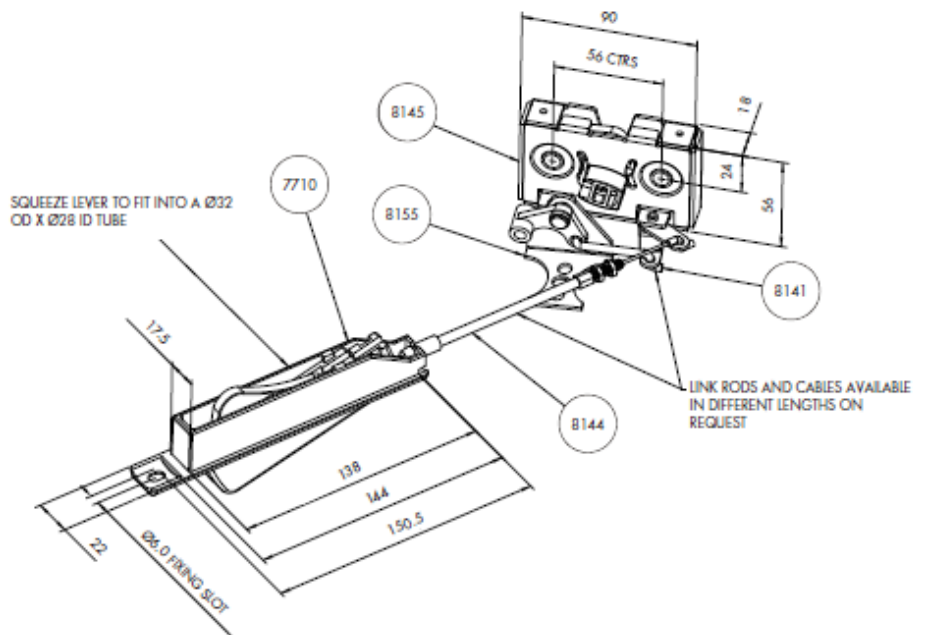
- (Opposite Hand Part Number: 8205)
- An adaption of Part Number: 8100 which allows the exterior push button handle to be offset from the interior via a linkage rod.
- Like the cable for the interior release, the linkage rod can be produced to any length to suit customer requirements.
- The interior release mechanism is designed to operate in a 32mm O/D tube (not supplied)
- Tested and approved to FMVSS 206/SAE J839 section 4.1 latch strength testing



8200 Parts List:

- 7710 Squeeze Lever Assembly
- 8145 Heavy Duty Latch
- 8141 Pull Rod
- 8144 Cable Assembly
- 8155 Quadrant Bracket Assembly

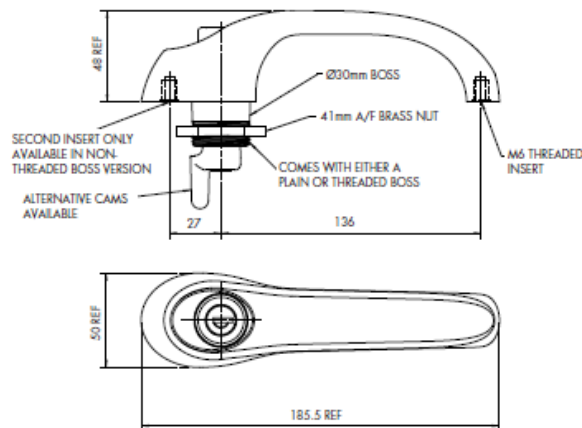
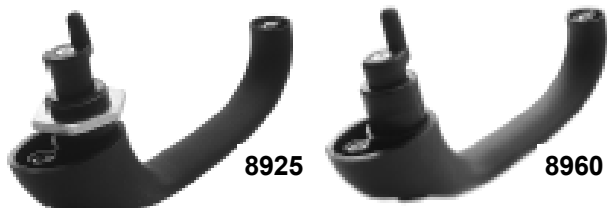
For more information visit
www.westalloy.com



Exterior Push Button Handle Assembly

Part Number: 8925/8960

- Standard Color: Black
- Molded in glass filled nylon and designed to be waterproof.
- Supplied with either a threaded boss Part No: 8925 or plain boss Part No: 8960, with additional molded-in M6 threaded inserts.
- Can be supplied with various cams to suit individual requirements.
- UV tested to 1,000.
- Tested and approved for resistance to water ingress to IPX5 [IEC529 edition 2.1 2001/2002].



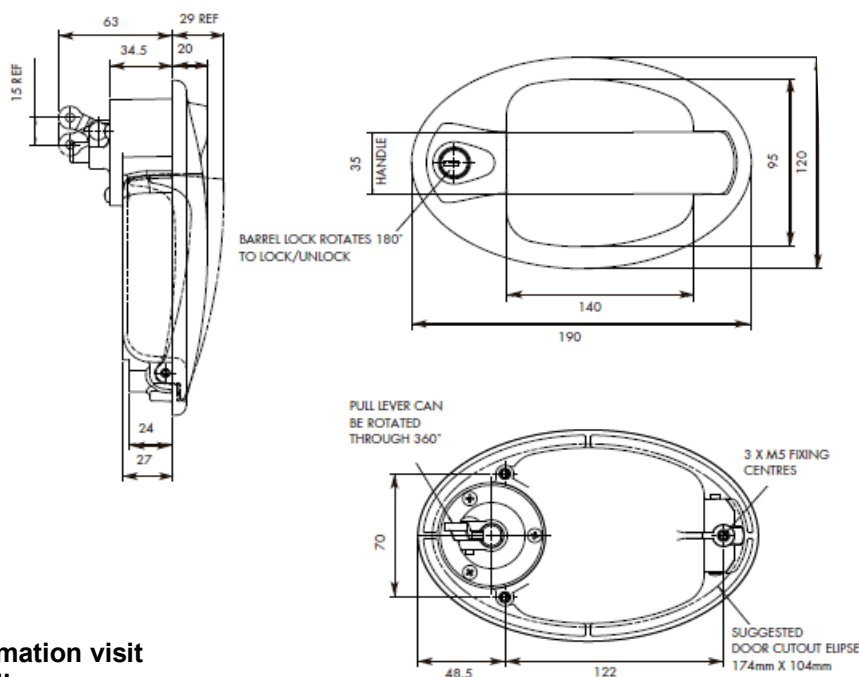
Exterior Pull Handle

Part Number: 9700

- Standard Color: Black
- The actuating mechanism can be rotated through 360 degrees to facilitate lifting at any angle in almost any situation.
- Designed to link via rod or cable to West Alloy's Anti-Burst Latches
- Can be supplied with a direct operation lever
- Part No: 9730



West Alloy

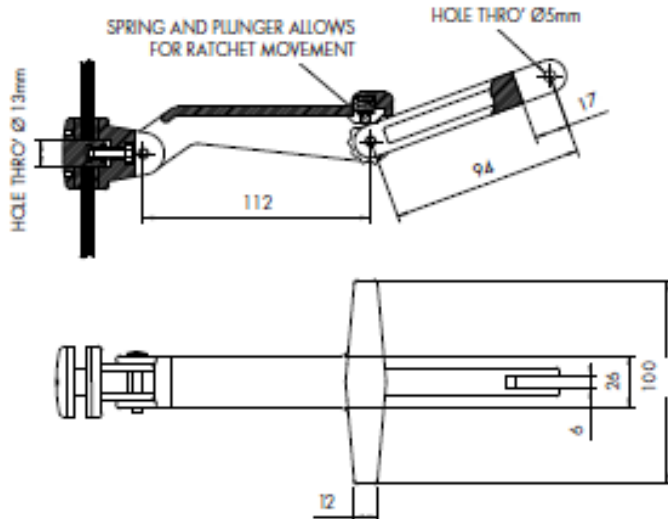


For more information visit
www.westalloy.com

Over-Center Window Stay

Part Number: 4600

- Standard Color: Black
- Overcenter Window Stay is designed as a two-positional stay, either fully closed or fully open
- Incorporated "T" bar handle for ease of use
- Part No: 5500 (4600 with Quick Release Pin)



West Alloy



4600



5500

Over-Center Window Stay

Part Number 4880

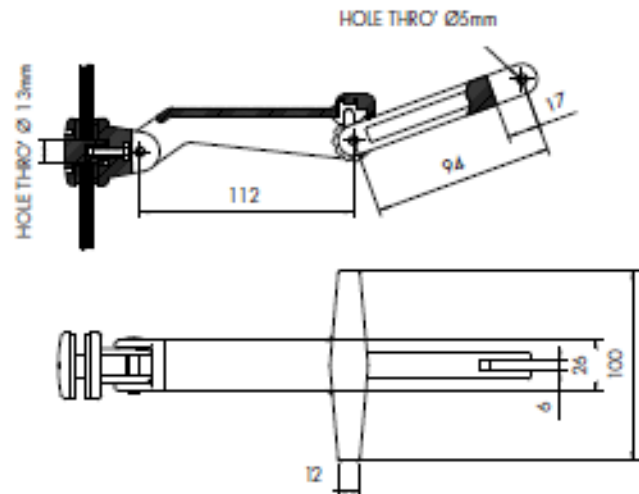
- Standard Color: Black
- Overcenter Window Stay operates on a ratchet and locks in various opening positions
- Incorporated "T" bar handle for ease of use
- Part No: 5225 (4800 with Quick Release Pin)



4880



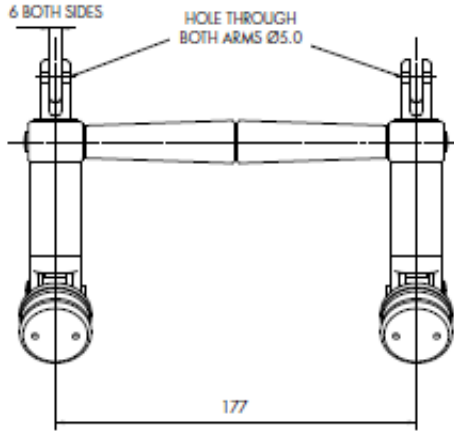
5225



Over-Center Window Stay

Part Number: 5195

- Standard color: Black
- Double Window Stay incorporating Part No's: 4950 and 4955 to provide fixing centers of 177mm
- Over-center Window Stay operates on a ratchet and locks in various opening positions.



Part No. 5195



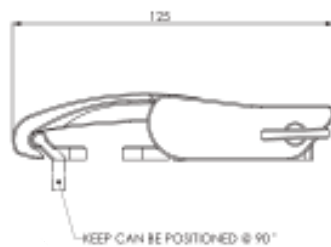
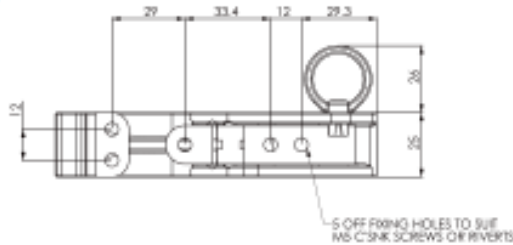
Part No. 7670
with Quick Release Pin

West Alloy

Over-Center Latch Assembly

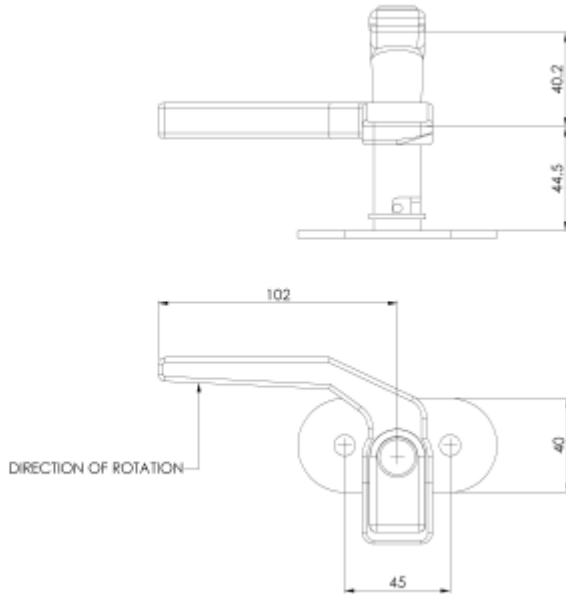
Part Number: 8700

- Molded in glass filled nylon
- Generally supplies in black, though other colors are available on request.
- Designed as a direct replacement for steel versions where corrosion may not be acceptable.
- Can be used either with or without the keep. The locking pin can be replaced with a padlock (not supplied)



Window Handle Assembly

- Part Number: 2680
- (Opposite hand Part Number: 2685)
- Standard color: Black
- Designed for use on a hinged rear window
- Used to lock window in a closed and partly closed position

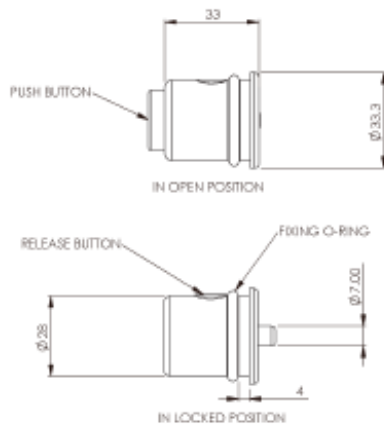


West Alloy

Window Lock

Part Number: 6007

- Molded in nylon
- Designed to fit through 28mm hole in 4mm thick panel
- Secured in place with O-Ring
- Standard color: Black with red push button



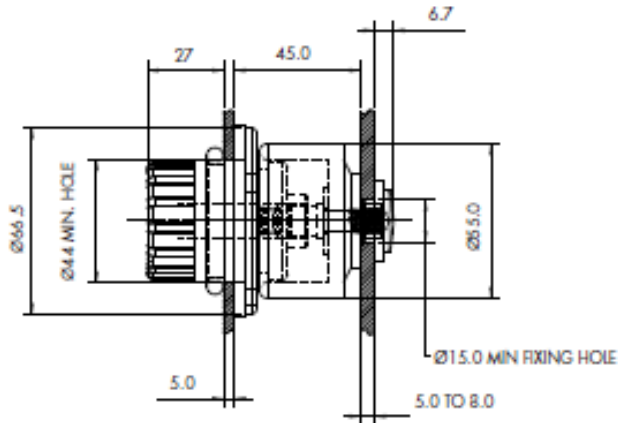
West Alloy

For more information visit
www.westalloy.com

Door Retainer Catch

Part Number: 6018

- Standard color: Black
- Designed for use on tractor cab doors.
- Interior unit - Dia. 42mm x 35mm deep
- Exterior unit - Dia. 55mm x 30mm deep
- Various operating options available
- Details on request



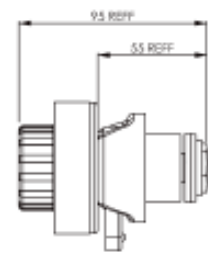
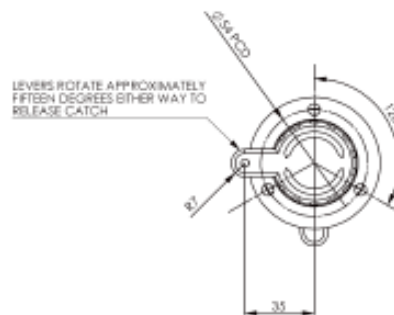
West Alloy

For more information visit
www.westalloy.com

Door Retainer Catch

Part Number: 6025

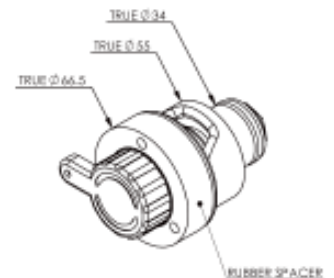
- Designed for use on tractor cab doors
- Similar to Part No. 6018 but with added features
- Can be operated manually from both inside and outside of the cab.
- It can also be modified to operate from a remote position
- This model has a longer “bump stop” to achieve easier access when operated from outside the cab
- Suitable for both glass and steel doors



ASSEMBLY 6025



West Alloy



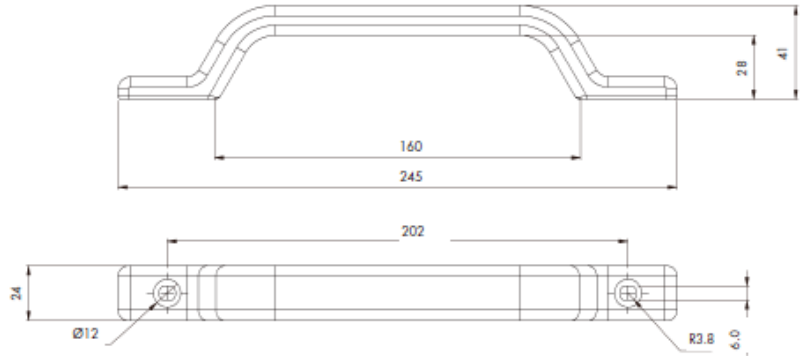
Grab Handle

Part Number: 6001

- Standard Color: Black
- Plastic molded handle
- L x W x H: 245mm x 24mm x 41mm
- 202mm fixing centers



West Alloy



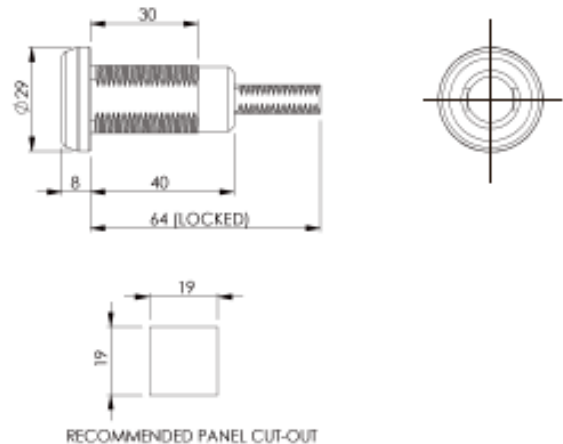
For more information visit
www.westalloy.com

Compression Locks

- Standard head finish: Black or Chrome
- Intended for use with gasketed doors, provides 6mm of compression to make a firm seal
- It is water-resistand, fully adjustable and panel mounted
- Designed to be assembled initially without the Barrel Lock (Part No. 7891) fitted. The barrel lock is then snapped into position as a final assembly operation to ensure single key operation
- Various fixing kits available



West Alloy



- **Compression Lock Assembly consists of:**
Part Number :6680

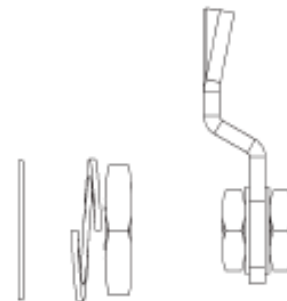
Compression Lock Body

- **Barrel Lock:**
Part Number: 7891

To suite the West Alloy "WD" range of keys (supplied separately)

- **Fixing Kit:**
Part Numbers: 6676, 6677, 6678, 6679, and 6681

Fixing Kit consists of: gasket, spring washer, fixing nut, latch bar, 2 x shake proof washers and 2 x nuts



Fixing kit for compression lock with various locking cams

Complete Lock Assemblies

Caraloc Assembly Part Number: 2000

- Standard Color: Black
- Supplied either left or right hand
- Can be adopted to suit door thicknesses from 19.5mm to 36.5mm)

Assembly consists of:

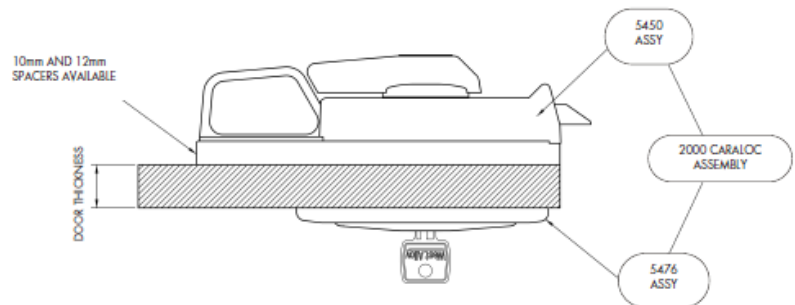
Caraloc Exterior Assembly Part Number: 5476

- With barrel lock fitted complete with key
- Moulded in glass filled nylon

Caraloc Interior Assembly Part Number: 5450

- Moulded in glass filled nylon
- Can be supplied with either a 10mm or 12mm baseplate that fits between the interior and inside face of the door

West Alloy



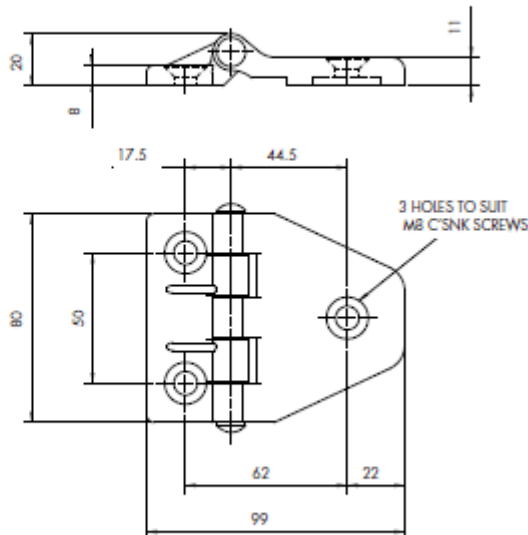
Hinge Assembly

Part Number: 7810

- Standard Color: Black
- Plastic injection molded hinge assembly produced in glass filled nylon complete with rubber grommet and spacer
- Designed primarily for glass applications



West Alloy



For more information visit
www.westalloy.com

General Purpose Clamp

Part Number: 2508

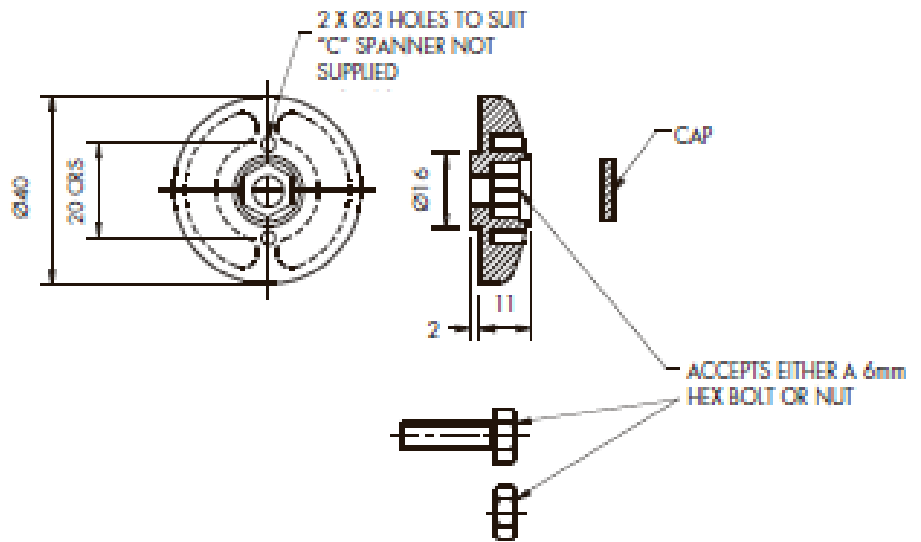
- Molded in glass filled nylon.
- Designed to accept either a hexagonal nut or bolt. Tightened using a 'C' spanner (not supplied) in 3mm dia. Holes on 20mm centers

Part Number: 7273

- As per Part No: 2508 but has an M6 internally threaded insert.
- Can be used in conjunction with a 3mm thick seal Part No: 7275



West Alloy



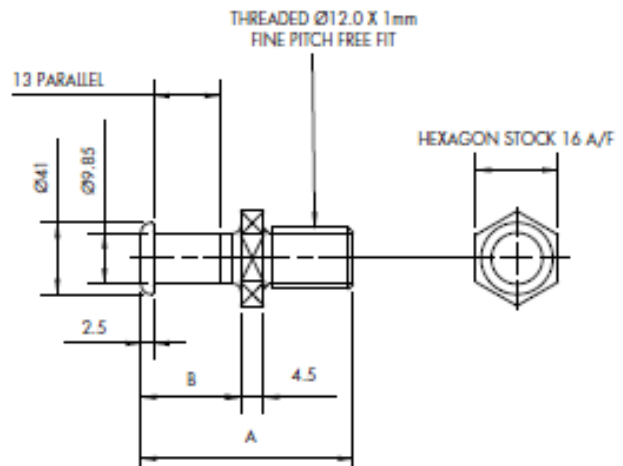
Striker Pins

- Part Number: 4713 Striker Pin
'A' Dim = 41.5
'B' Dim = 19.5
- Part Number: 4722 Striker Pin
'A' Dim = 49.0
'B' Dim = 19.05
- Part Number: 4747 Striker Pin
'A' Dim = 49.5
'B' Dim = 27.5
- Part Number: 4756 Striker Pin
'A' Dim = 60
'B' Dim = 35
- For use with Interior Rotary Lock Assemblies



West Alloy

For more information visit
www.westalloy.com



Contact Us



TriMark Corporation

500 Bailey Avenue
P.O. Box 350
New Hampton, IA 50659
United States
Tel: +1 641 394 3188
Fax: +1 641 394 2392
www.trimarkcorp.com

TriMark (Xuzhou) Automotive Components Co. Ltd

Building A5 Jinwu Road
Xuzhou Economic Development Zone
Xuzhou, Jiangsu
221004 PR China
Tel: +86 516 8773 0018
Fax: +86 516 8773 0058
www.trimarkcn.com

TriMark Europe Limited

Cedar Court
Walker Road
Bardon Hill, Coalville, LE67 1TU
United Kingdom
Tel: +44 (0) 1530 512460
Fax: +44 (0) 1530 512461
www.trimarkeu.com

West Alloy

Garth Road
Morden
Surrey
SM4 4LN
United Kingdom
Tel: +44 (0) 208 337 2211
Fax: +44 (0) 208 330 7640
www.westalloy.com

