

020-0850  
*e-LOCKING*  
Pull Handle



TriMarks' NEW 020-0850 *e-LOCKING* Pull Handle for off-road applications allows power locking/unlocking via a switch, remote RF FOB or keypad. Based on the proven 020-0800, this robust pull handle brings a new automotive function and convenience to your cabs and enclosures.

**DESIGNED FOR:**

- Medium to heavy-duty agricultural and construction personnel doors
- Off-highway vehicle applications that require a direct release surface mounted exterior pull handle



[www.trimarkcorp.com](http://www.trimarkcorp.com)

**TriMark Corporation**

500 Bailey Avenue  
P.O. Box 350

New Hampton, Iowa 50659  
United States

Tel: 641-394-3188

Fax: 641-394-2392

1-800-447-0343

[www.trimarkcorp.com](http://www.trimarkcorp.com)

10002707 QM08  
10002707 TS09



ISO 9001: 2008  
ISO/TS 16949: 2009

TriMark Corporation

**TriMark Europe**

Cedar Court  
Walker Road

Bardon Hill  
Coalville LE67 1TU

United Kingdom

Tel: +44(0)1530 512460

Fax: +44(0)1530 512461

[www.trimarkeu.com](http://www.trimarkeu.com)

427961 QM08  
427961 UM



ISO 9001 : 2008  
ISO 14001 : 2004

TriMark Europe Ltd.

## FEATURES/BENEFITS:

- Provides for greater ease of operation (ergonomics) than conventional push button or paddle handles; includes gas-assist molded handle
- Provides the ability to remotely lock the exterior pull handle
- Handle is rigid when locked
- KeyOne™ Plus lock cylinder can be keyed alike with most single and reversible key systems
- Readily adaptable to a variety of door thickness with adjustable connecting link assembly
- PTC overload to protect motor against excessive heating



## AVAILABLE:

- With perimeter gasket and spacers to facilitate mounting and provide resistance to water and dirt infiltration
- Non-power locking version

## MATERIAL:

- Handle and base: glass reinforced nylon
- Threaded inserts: brass

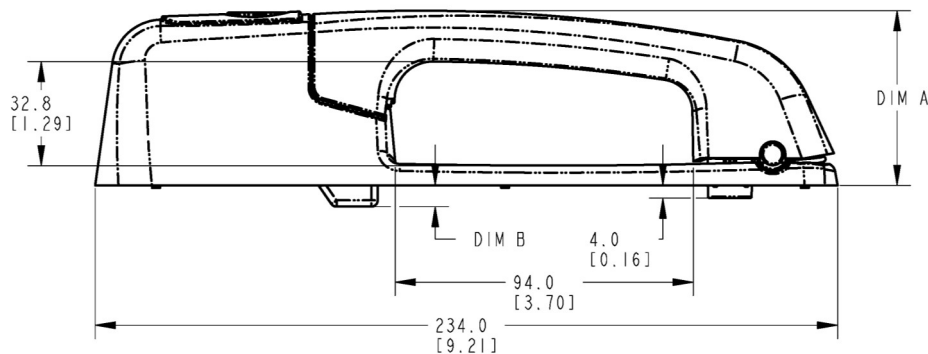
## INSTALLATION:

- Same mounting pattern as 020-0800 Pull Handle — mounts against glass with only 2 holes or steel with conventional mounting
- Installed with (3) M6 X 1.0 bolts (not included)
- Recommended mounting fastener torque to be 5.6 -6.7 N-m (50-59 lbf-in)
- Wire length is 200mm
- Connector customization is available

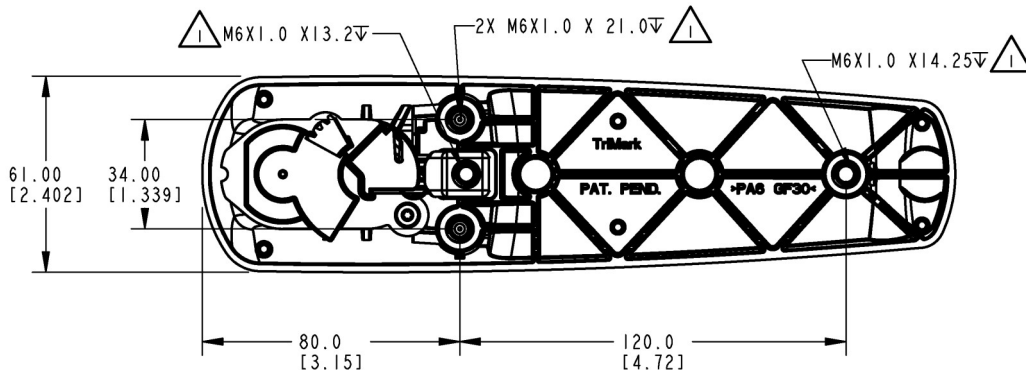
## U.S. Patent No. 7,819,440

Individual part dimensions are for reference only. Refer to individual part drawings for complete dimensions, specifications, and installation procedures. Engineering assistance and application drawings are available.


**Caution:** Product does not meet the locking requirements for FMVSS 206.



BASE OPTION	DIM A	DIM B
STD (HEIGHT OPTION 1)	55.0 [2.17]	6.7 [0.26]
THICK (HEIGHT OPTION 2)	61.1 [2.41]	0.6 [0.02]

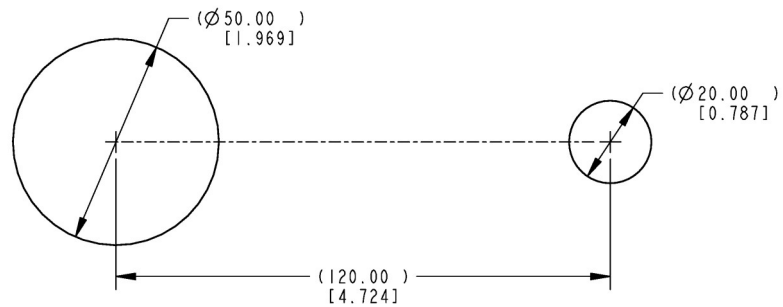
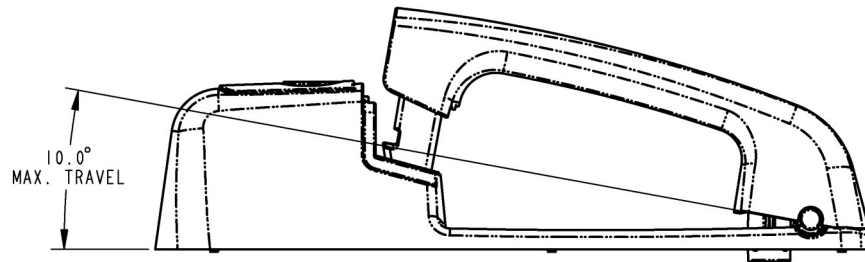


NOTES: UNLESS OTHERWISE SPECIFIED;

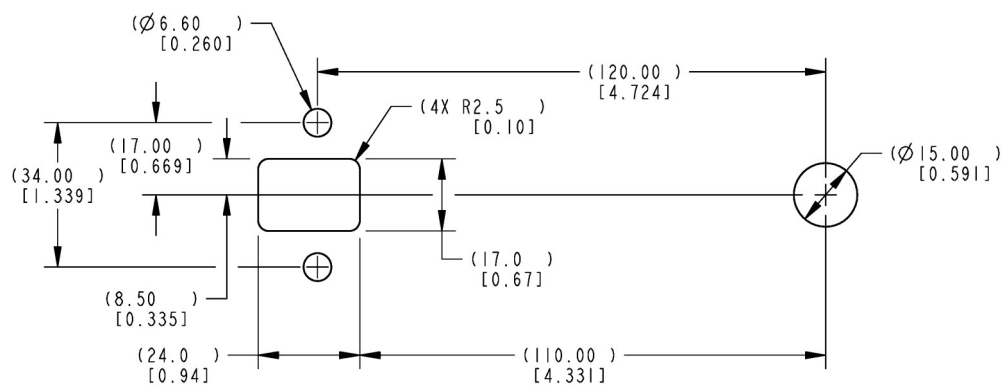
 RECOMMENDED APPLICATION TORQUE TO BE 5.6-6.7 N-m [50-59 IN-LB].



For more information visit  
[www.trimarkcorp.com](http://www.trimarkcorp.com)



RECOMMENDED GLASS MOUNTING  
 DOOR CUTOUT DETAIL



RECOMMENDED STEEL MOUNTING  
 DOOR CUTOUT DETAIL