

**KEY STYLE "A"**

**MATERIAL:** KEYBLANK - BRASS  
 HEAD - 6/16 NYLON (DUPONT 101L NC10 OR EQUAL)

**FINISH:** KEYBLANK - NONE  
 HEAD - RAWAL MT-11020 TEXTURE FINISH OR EQUAL

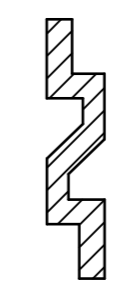
**COLOR:** HEAD - BLACK FOR NONMASTER KEYS  
 RED FOR MASTER KEYS

**NOTES:**

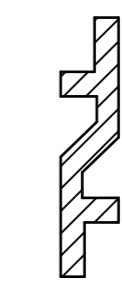
- ① BITTED KEYS TO FULLY RETRACT ALL LOCKING TUMBLERS WHEN INSERTED INTO LOCKCYLINDER WITH THE SAME KEYCODE/SERIES. KEY BLANKS CAN BE INSERTED BUT WILL NOT RETRACT TUMBLERS OF LOCKCYLINDERS WITHIN THE SAME KEYCODE SERIES. (SEE TABLE)
- ② ARTWORK LETTERING PER TRI/MARK ENGINEERING SPECIFICATION ES-122.
- ③ REFERENCE ES-128 FOR KEY SECTIONS, ES-134 FOR KEYCODES, AND ES-132 FOR KEY BITTING.
- ④ KEY BLANKS TO BE OVERSIZED TO .346/.350 PRIOR TO BITTING.

DIMENSIONS	ANGLES
X.X = ±.1	X° = ± 1°
X.XX = ±.03	
X.XXX = ±.003	

REV.	ECO	BY	CHKD	REVISION
1	10671	TJZ 10/16/98	BJP 10/17/98	REVISED AND REDRAWN
2	10764	TJZ 11/23/98	CHL 11/24/98	ADDED 8X R.035; .030±.004 WAS .030; REVISED KEY CUTS FOR 16169-01-1141 THRU 16169-01-1160
3	10939	JRS 4/14/99	ASP 4/14/99	REVISED AND REDRAWN; REVISED NOTE 1; ADDED NOTE 4; SEE TABLE; PRODUCT CODE COLUMN
4	10976	JRS 4/26/99	ASP 4/26/99	DELETED 16169-01-1141 THRU 16169-01-1160; 16169-01-2001; 16169-01-2006; "IR" SERIES; ADDED 16169-02-1141 THRU 16169-02-1160; 16169-10-2000; 16169-15-1000; MA
5	10990	JRS 5/17/99	ASP 5/17/99	ADDED SECTION A3-A3; 16169-20-2001; 16169-20-2000
6	11014	JRS 6/30/99	ASP 6/30/99	ADDED VERSIONS -02-1001 THRU -02-1030
7	11121	JRS 8/13/99	ASP 8/13/99	ADDED VERSIONS -02-2002 THRU -02-2004, 16169-14-1000
8	8110	JRS 10/14/98	ASP 10/14/98	(.490) WAS .490; 1.159±.010 WAS 1.159; REVISED AND REDRAWN TABLE
9	10236	JRS 12/17/99	TJN 12/17/99	ADDED -02-1091 THRU -02-1140; -02-1161 THRU -02-1240; -02-2141 THRU -02-2240; -11-1000
10	16726	BJB 06/15/00	JRS 06/15/00	.340±.003 WAS .340±.002



① **SECTION A1-A1**  
 TRI/MARK KEY SECTION KS101  
 FOR CODES 1001-1240  
 SCALE 4:1

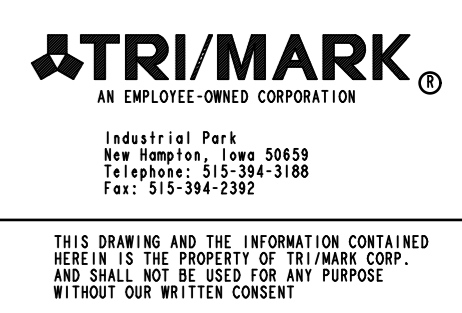


② **SECTION A2-A2**  
 TRI/MARK MASTER KEY SECTION KS111  
 FOR IL CODES 1001-1030  
 FOR IM CODES 1031-1060  
 FOR IN CODES 1061-1090  
 FOR IP CODES 1091-1140  
 FOR IR CODES 1141-1240  
 SCALE 4:1



③ **SECTION A3-A3**  
 TRI/MARK KEY SECTION KS201  
 FOR CODES 2001-2240  
 SCALE 4:1

SPEC	DESCRIPTION	ITEM	PART NO.	DESCRIPTION	QTY.
DRAWN BY	JMH	6/24/98	MATERIAL: SEE ABOVE		
CHECKED BY	KTT	6/25/98	HEAT TREAT		
DESIGN ENG.	KTT	8/14/98	FINISH: SEE ABOVE		
QUALITY ENG.			PROJECT	97082	CUSTOMER PART NO.
			SIZE	D	PART WT.
			PROD CODE	③ SEE TABLE	SCALE
FORM 163-210 REV. 1.0 10/15/93			REPORT ERRORS TO ENGINEERING DEPT.	DO NOT SCALE DRAWING	SCALE 3:1
			REV.	10	PART NO. 16169-XX-XXXX



THIS DRAWING AND THE INFORMATION CONTAINED HEREIN IS THE PROPERTY OF TRI/MARK CORP. AND SHALL NOT BE USED FOR ANY PURPOSE WITHOUT OUR WRITTEN CONSENT.