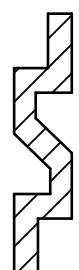


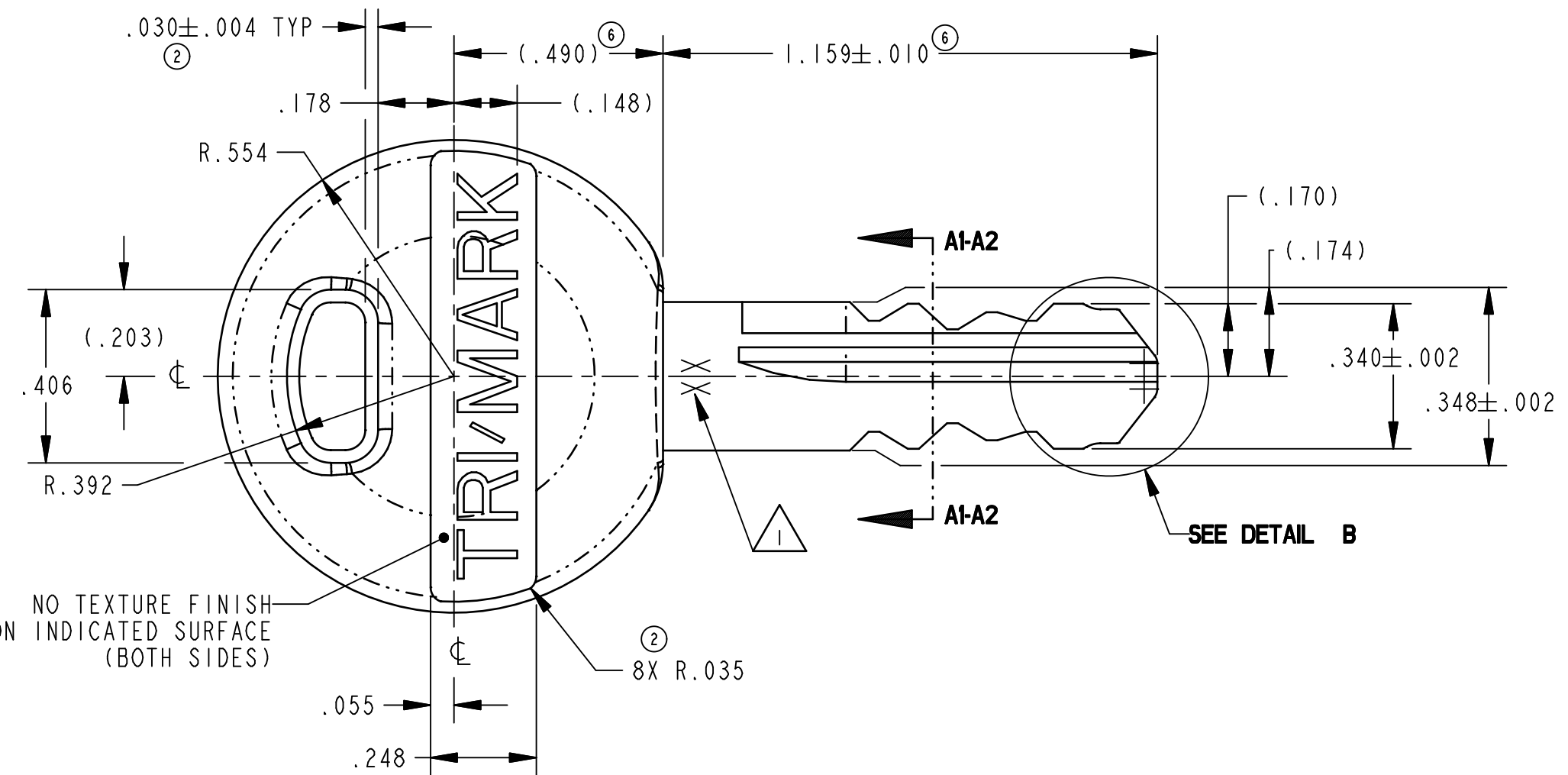
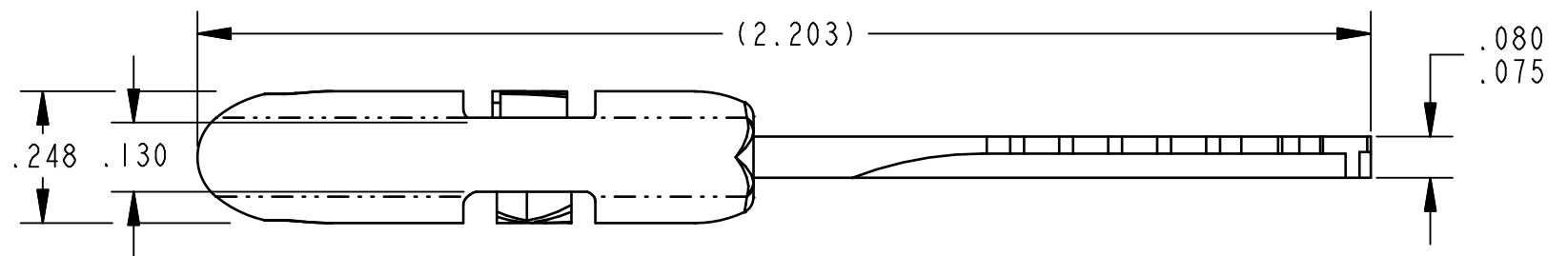
REVISION	ECO	BY	CHECKED	DESCRIPTION
1	10671	TJZ 10/6/98	BJP 10/7/98	REVISED AND REDRAWN
2	10764	TJZ 11/23/98	CWL 11/24/98	ADDED 8X R.035;.030±.004 WAS .030
3	10939	JRS 4/14/99	AEP 4/14/99	REVISED AND REDRAWN;REVISED NOTES 4 & 5;DELETED NOTE 2 AND RENUMBERED;ADDED PRODUCT CODE
4	10976	JRS 4/26/99	AEP 4/26/99	DELETED 16170-09;16170-10; ADDED 16170-15-1000; 16170-15-2000
5	11014	JRS 6/30/99	AEP 6/30/99	ADDED VERSION -11-2000;DELETED SCALE,TOL. TABLE ON SHT 2
6	8110	JRS 10/14/99	AEP 10/14/99	(.490) WAS .490;1.159±.010 WAS 1.159;REVISED AND REDRAWN TABLE
7	10238	JRS 12/1/99	TJN 12/1/99	ADDED -11-1000
8	18579	BJE 01/19/01	JRS 01/19/01	ADDED -21-2000 VERSION & KS211 KEY SECTION;REVISED NOTES FOR KS111 KEY SECTION
9	18860	JRS 4/5/01	MLH 4/5/01	REVISED NOTES;REMOVED TOP VIEW;SERIAL #



SECTION A1-A1 Ⓢ
MASTER KEY SECTION KS111
CODES 1001-1240
SCALE 4:1



SECTION A2-A2 Ⓢ
MASTER KEY SECTION KS211
FOR CODES 2001-2240
SCALE 4:1



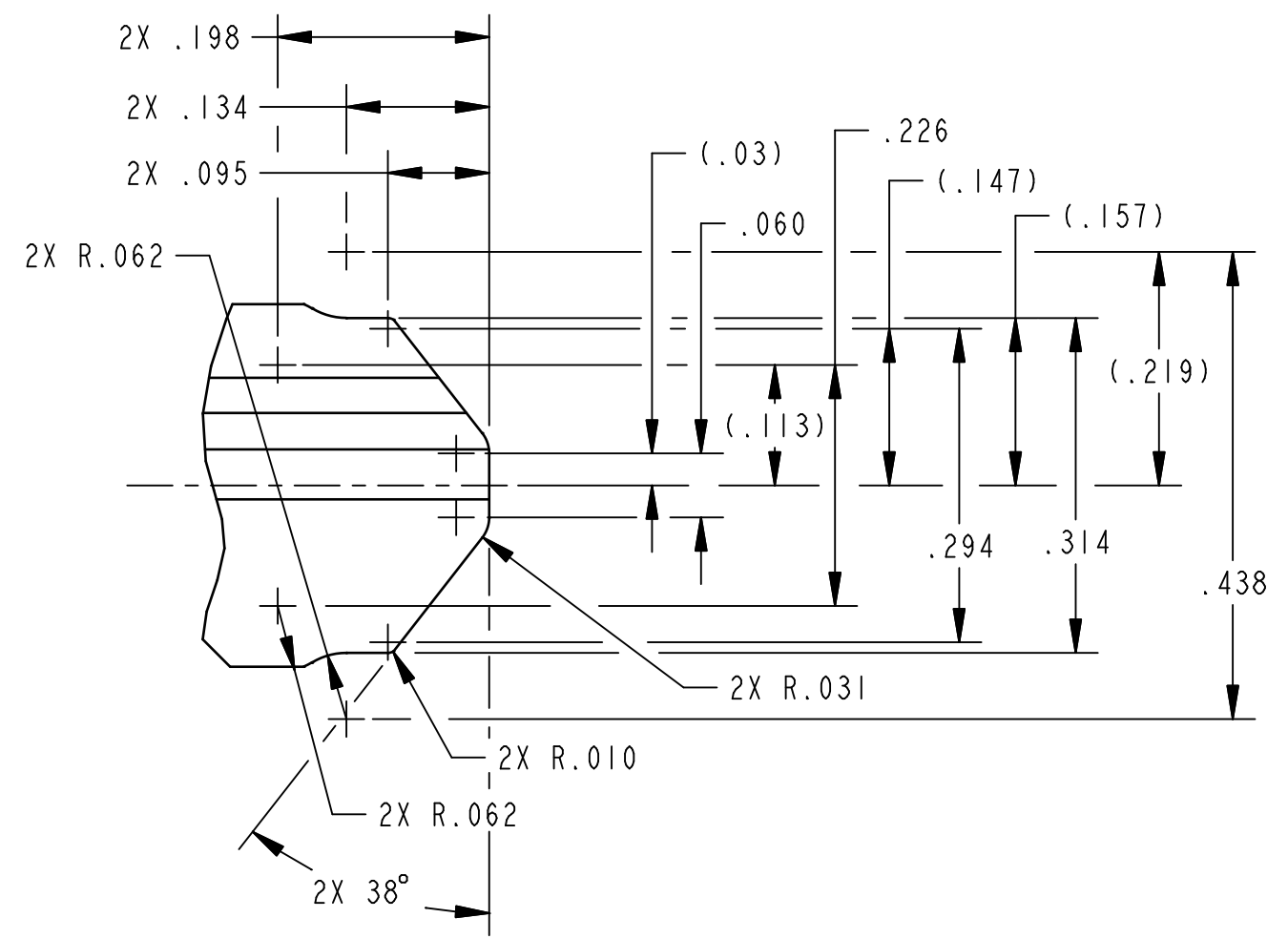
KEY STYLE "A"

- Ⓢ NOTES:
- ① TWO DIGIT IDENTIFICATION NUMBER TO BE STAMPED ON THIS OR OPPOSITE SIDE. SEE TABLE FOR CODE STAMP.
 - ② ARTWORK LETTERING PER TRI/MARK ENGINEERING SPECIFICATION ES-122.
 - ③ REFERENCE ES-128 FOR KEY SECTIONS, ES-134 FOR KEYCODES AND ES-132 FOR KEY BITTING.
 - ④ KEY TO FULLY RETRACT ALL LOCKING TUMBLERS AND RETAINING TUMBLER WHEN INSERTED INTO LOCKCYLINDER (16014-XX-XXXX) WITH THE SAME KEYCODE SERIES (SEE TABLE).

MATERIAL: KEYBLANK - BRASS
HEAD - 6/16 NYLON (DUPONT 101L NC10 OR EQUAL)

FINISH: KEYBLANK - NONE
HEAD - RAWAL MT-11020 TEXTURE FINISH OR EQUAL

COLOR: HEAD - BLUE FOR NONMASTER KEY SERIES
GREEN FOR MASTER KEY SERIES



DETAIL B
SCALE 6.000

DIMENSIONS	ANGLES
X.X = ±.1	X° = ±1°
X.XX = ±.03	
X.XXX = ±.003	

SHEET 1 OF 2

SPECIFICATION	DESCRIPTION	ITEM	PART NUMBER	DESCRIPTION	QUANTITY
DRAWN BY: JMH 6/24/98	MATERIAL: SEE ABOVE				
CHECKED BY: KTT 6/25/98					
DESIGN ENG.: KTT 8/14/98					
MFG. ENG.	HEAT TREAT				
QUALITY ENG.	FINISH: SEE ABOVE				
	PROJECT: 97082	CUSTOMER:	CUSTOMER PART NUMBER:		
	SIZE: C	PART WEIGHT:	SURFACE AREA:	PRODUCT CODE: Ⓢ SEE TABLE	
				REPORT ERRORS TO ENGINEERING DEPARTMENT	DO NOT SCALE DRAWING
				<p>500 Bailey Avenue New Hampton, Iowa 50659 U.S.A. Tel: 641-394-3188 Fax: 641-394-2392</p> <p>This drawing and the information contained herein is the property of TriMark Corporation and shall not be used for any purpose without our written consent.</p>	
				PART NAME: SEE TABLE	
	SCALE: 3:1	REVISION: 9	PART NUMBER: 16170-XX-XXXX		