

Table of Contents

Latches

Two Rotor

050-0100 Two Rotor Latch	13
050-0103 Two Rotor Latch 2-Position Intertrip	14
050-0107 Two Rotor Latch With Coaxial Trip	14
050-0110 Two Rotor Single Position Latch	14
050-0113 Two Rotor Latch Single Position Intertrip	14
050-0117 Two Rotor Latch With Coaxial Trip	14
050-0150 Two Rotor Latch & Release Linkage	15
050-0170 Two Rotor Latch With Bellcrank Linkage	16



050-0100

050-0103

050-0107



050-0110



050-0113



050-0150



050-0170



050-0200



050-0204



050-0210



050-0500



050-0275



050-0300



050-0400



050-0250



050-0410



050-0600



050-0810



050-0700



050-0850



050-1100



050-1200



050-1600



050-1900



050-7180



050-7200



050-7100



050-7120



050-7130

Single Rotor

050-0200 Slimline Rotary Latch	17
050-0204 Slimline Latch With Inline Trip Lever	18
050-0210 Slimline Rotary Latch Single Position	18
050-0250 Single Rotor Latch & Linkage Assembly	19
050-0275 Slimline Cargo Latch	20
050-0300 Single Rotor Latch	21
050-0400 Floating Striker Single Rotor Latch	22
050-0410 Floating Striker Single Position Rotor Latch	23
050-0500 Single Rotor Mini-Latch	24
050-0600 Single Rotor Compartment Latch	25
050-0700 12mm Single Rotor Latch	26
050-0810 Single Rotor Latch Logic	27
050-0850 TriGuard Heavy Duty Latch Module With Slam Cam Option	29
050-1100 Family - 8mm Single Rotor Latch	30
050-1200 Single Rotor Panel Latch	31
050-1600 TriGuard Heavy Duty Single Rotor Latch	32
050-1900 8mm Single Rotary Latch	33
050-7100 10mm Single Rotor Latch	35
050-7120 10mm Single Rotor Latch With Handrail	37
050-7130 10mm Single Rotor Latch With Squeeze Release	38
050-7140 10mm Single Rotor Latch With Cable Release	39
050-7180 10mm Single Rotor Latch With Finger Release	40
050-7200 10mm Single Rotor Latch With Dual Trip Levers	41



060-0100



060-0500



060-0900



060-0901



060-1200



060-7100



060-7200

Sliding Bolt

060-0100 Plunger Bolt	42
060-0500 Plunger Bolt	43
060-0900 Recessed Mount Plunger Bolt	44
060-0901 Low Profile Plunger Bolt	45
060-1200 RV Screen Door Latch	46
060-7100 Plunger Latch - Low Profile L-Handle	47
060-7200 Heavy Duty Plunger Latch - Large L-Handle	48

Table of Contents

Latches

Dead Bolt

140-0100 TriGuard Heavy Duty Cam Lock	49
---	----



140-0100

Slam Action (hook, pivoting & rotating catch)

030-0500 Pivoting Catch Compartment Latch.....	50
030-0550 Heavy Duty Pivoting Catch Compartment Latch	51
050-1300 Plastic Slam Latch	52



030-0500



050-1300



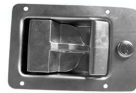
030-0550



080-0200



080-0400



080-0500



080-0700

Compression

080-0200 Lever Style Compression Latch	53
080-0400 CompOne™ Compression Latch	54
080-0500 Grapple Style Compression Latch	55
080-0700 Light Duty Compression Hook Latch	56

Over Center

080-7100 Over Center Latch	57
090-0520 Window Hold-Open	58
090-7100 T-Style Over Center Window Stay	59
090-7110 Compact T-Style Window Hold-Open	60
090-7200 L-Style Over Center Window Stay	61



080-7100

090-0520

090-7100

090-7110

090-7200



130-0100



130-7200

Pin Type

130-0100 Dual Release Door Hold-Open	62
130-7200 Door Hold-Open	63

Handles

Paddle

030-0100 Single Rotor Compartment Latch	64
030-0200 / 030-0250 Paddle Handle	65
030-0800 Flush Mounted Paddle Handle	66
030-0850 Flush Mounted Paddle Handle	67
030-0860 Flush Mounted Paddle Handle With Inside Lock Knob ..	68
030-0875 Free-Float Flush Mounted Paddle Handle	69
030-0900 Motor Home Entrance Door Hardware With DeadBolt...	71



030-0100

030-0200

030-0250

030-0800

030-0850

030-0860

030-0900

030-0875

050-0100 Two Rotor Latch

This versatile two rotor latch is designed for medium to heavy-duty applications for on or off-highway entrance doors, compartments and access panels. It features a variety of trip levers and mounting axles for ease of mounting and applications and is FMVSS 206 (ECE R11) compliant.



- Door thicknesses of 1-7/8" (47.6mm) or greater
- Door weights of 50-200 lbs (23-91 kg)
- Door seal pressures of 50-150 lbs (23-68 kg) (suggested for best results)
- Use with TriMark 070-0200 Striker Bolt

AVAILABLE:

- In left or right hand configurations (right hand shown)
- With (4) 1/4-20 UNC or M6 x 1 threaded axles
- With trip lever options
- Straddle mount option

MATERIAL:

- Internal latch components: Heat treated, smooth edge stamped steel
- Case halves: High strength steel
- Springs: Non-corrosive stainless steel

FINISH:

- Zinc plated, clear chromate steel components

All dimensions are for reference only. For more information visit www.trimarkcorp.com

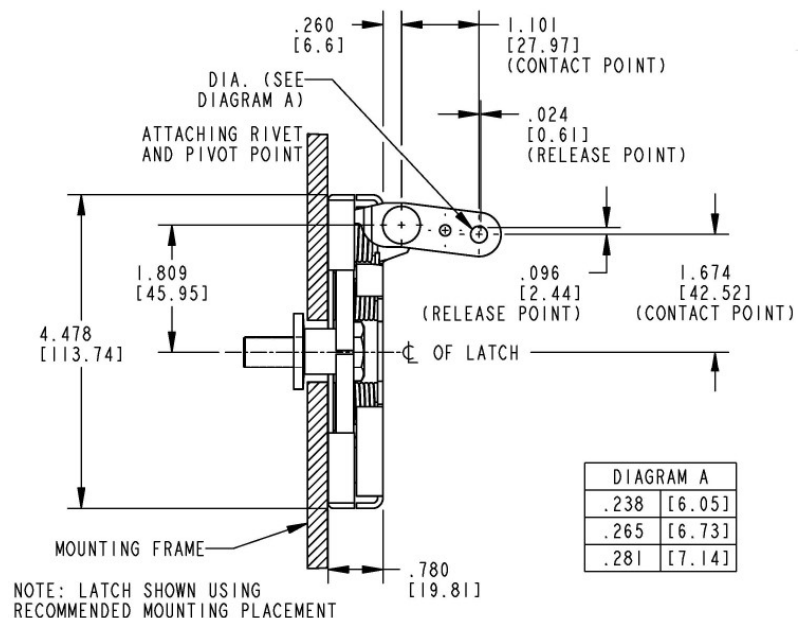
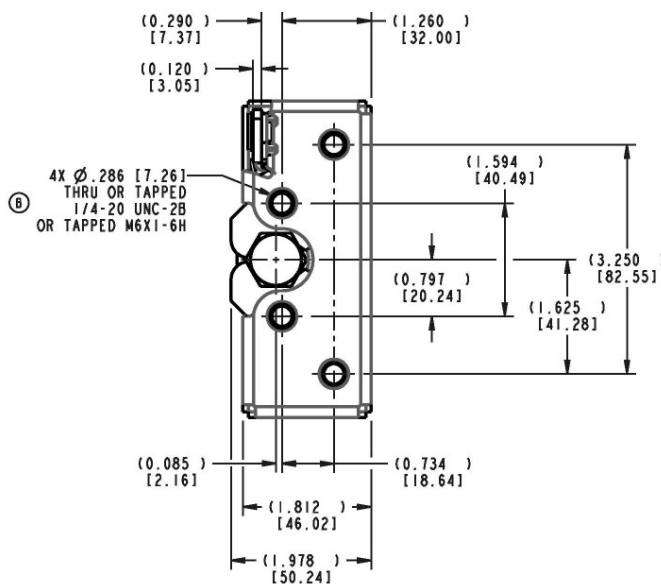
INSTALLATION:

- (4) 1/4-20 UNC grade 5 or M6 x 1 class 8.8 or better fasteners are required (not included)
- Tighten to the fastener manufacturers' recommended torque value, however, do not exceed 120 in-lbs (13.3 N-m)
- Fastener mounting holes diameter should not exceed .281" (7.1mm)

INTERNAL LUBRICATION:

- Oven-cured dry lubricant is applied at factory on all critical moving parts

Note that this 050-0100 Two-Rotor Latch complies with FMVSS 206 (ECE R11) when tested accordance with SAE J839 and that this product meets FMVSS 206 (ECE R11) load requirements and may be used in FMVSS 206 (ECE R11) applications pending TriMark application approval. Please refer to page 158 for the complete FMVSS 206 (ECE R11) statement.



Other 050-0100 Two Rotor Latches

DESIGNED FOR:

- Medium to heavy weight doors for on or off-highway applications
- Applications where it is desirable to have the release mechanism in-line with the latch (050-0103 Two Rotor Latch 2-Position Intertrip)
- Applications where it is desirable to provide additional support to the trip lever (050-0107 and 050-0117 Two Rotor Latch With Coaxial Trip)
- Applications where it is desirable to have a single position rotary latch (050-0110 Two Rotor 1-Position Latch)
- Door thicknesses of 1-7/8" or greater (47.6mm)
- Door weights of 50-200 lbs. (23-91kg)
- Door seal pressures of 50-150 lbs. (23-68kg) (suggested for best results)
- Use with TriMark 070-0200 Striker Bolt

AVAILABLE:

- In left or right hand configurations
- With (4) 1/4-20 UNC, M6 x 1 threaded axles or .286" (7.3mm) diameter "thru" axles
- With trip lever options (please inquire)
- With a torsion return spring (050-0107)
- Straddle mount option (050-0110)

FINISH:

- Zinc plated, clear chromate steel components

MATERIAL:

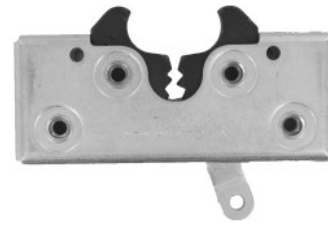
- Internal latch components: Heat treated, smooth edge stamped steel
- Case halves: High strength steel
- Springs: Non-corrosive stainless steel

INTERNAL LUBRICATION:

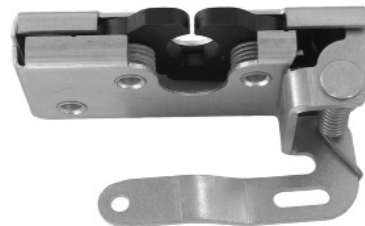
- Oven-cured dry lubricant is applied at factory on all critical moving parts

INSTALLATION:

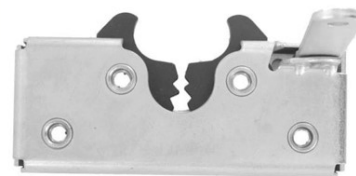
- (4) 1/4-20 UNC grade 5 or M6 x 1 class 8.8 or better fasteners are required (not included)
- Tighten to the fastener manufacturers' recommended torque value, however, do not exceed 120 in-lbs. (13.3 N-m)
- Fastener mounting holes diameter should not exceed .281" (7.1 mm)



050-0103 Two Rotor Latch 2-Position Intertrip



050-0107 Two Rotor Latch With Coaxial Trip



050-0110 Two Rotor Single-Position Latch



050-0113 Two Rotor Latch Single-Position Intertrip



050-0117 Two Rotor Latch With Coaxial Trip

050-0103 and 050-0107—Note that this 050-0103 and 050-0107 latches comply with FMVSS 206 (ECE R11) when tested accordance with SAE J839 and that this product meets FMVSS 206 (ECE R11) load requirements and may be used in FMVSS 206 (ECE R11) applications pending TriMark application approval. Please refer to page 158 for the complete FMVSS 206 (ECE R11) statement.

050-0110, 050-0113 and 050-0117 —Caution: Single position rotary latches do not comply with FMVSS 206 (ECE R11) requirements

050-0150 Two Rotor Latch & Release Linkage

This two rotor latch is designed for medium to heavy-duty applications for off-highway entrance doors. It features an integrated linkage that allows for direct L-handle actuation and provides for ease of mounting and applications.

DESIGNED FOR:

- Door thicknesses of 1-7/8" (47.6mm) or greater
- Door weights of 50-200 lbs. (23-91 kg)
- Door seal pressures of 50-150 lbs. (23-68 kg) (suggested for best results)
- Use with TriMark 070-0200 Striker Bolt

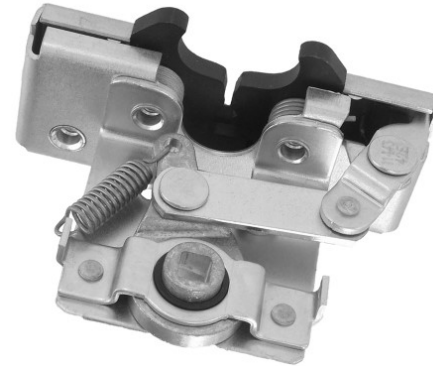
AVAILABLE:

- In left or right hand configurations (right hand shown)
- With drive bar receiver parallel to striker bolt or rotated in 15° increments (as illustrated)

INSTALLATION:

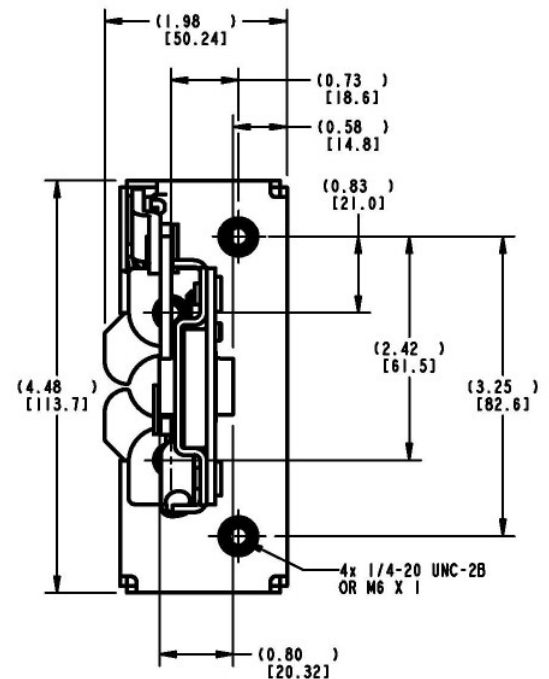
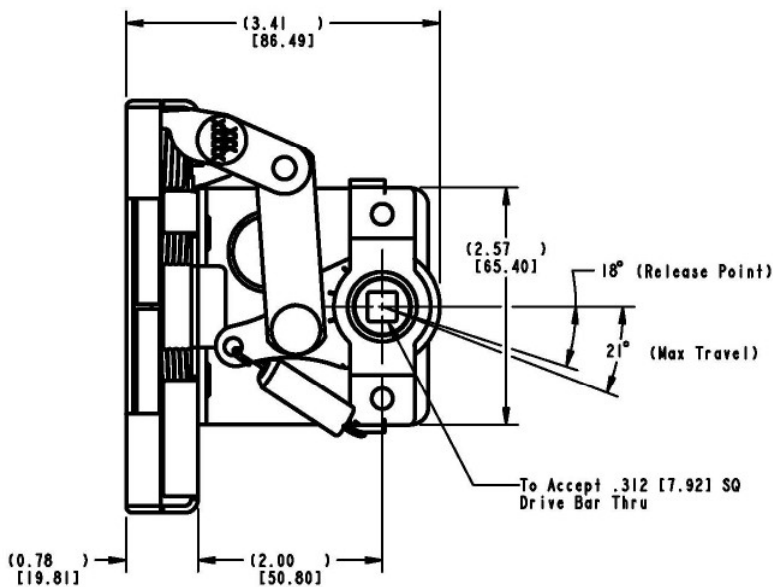
- (4) 1/4-20 UNC grade 5 mounting fasteners (not included)
- Tighten to the fastener manufacturers' recommended torque value, however, do not exceed 120 in-lbs (13 N-m)
- Maximum .312" (7.9mm) diameter mounting holes

All dimensions are for reference only. For more information visit www.trimarkcorp.com



Note that this 050-0150 Two-Rotor Latch & Release Linkage complies with FMVSS 206 (ECE R11) when tested accordance with SAE J839 and that this product meets FMVSS 206 (ECE R11) load requirements and may be used in FMVSS 206 (ECE R11) applications pending TriMark application approval. Please refer to page 158 for the complete FMVSS 206 (ECE R11) statement.

Caution: Product does not meet the locking requirements for FMVSS 206 (ECE R11).



050-0170 Two Rotor Latch With Bellcrank Linkage

This two rotor latch is designed for medium to heavy-duty applications for off-highway entrance doors where push handle actuation is desired. It features an integrated linkage that allows for direct push button actuation and direct inside release and provides for ease of mounting and applications.

DESIGNED FOR:

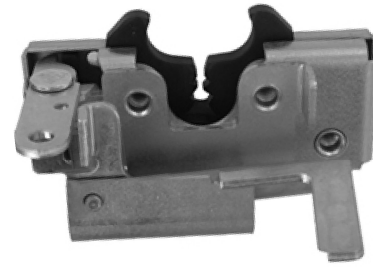
- Door thicknesses of 1-7/8" (47.6mm) or greater
- Door weights of 50-200 lbs. (23-91 kg)
- Door seal pressures of 50-150 lbs. (23-68 kg) (suggested for best results)
- Use with TriMark 070-0200 Striker Bolt

AVAILABLE:

- In left or right hand configurations (left hand shown)
- With (4) 1/4-20 UNC or M6 x 1 threaded axles
- With inside release lever options and trip lever options

INSTALLATION:

- (4) 1/4-20 UNC grade 5 or M6 x 1 class 8.8 mounting fasteners (not included)
- Tighten to the fastener manufacturers' recommended torque value, however, do not exceed 120 in-lbs (13.3 N-m)
- Maximum .281" (7.1mm) diameter mounting holes



FINISH:

- Zinc plated, clear chromate steel components

MATERIAL:

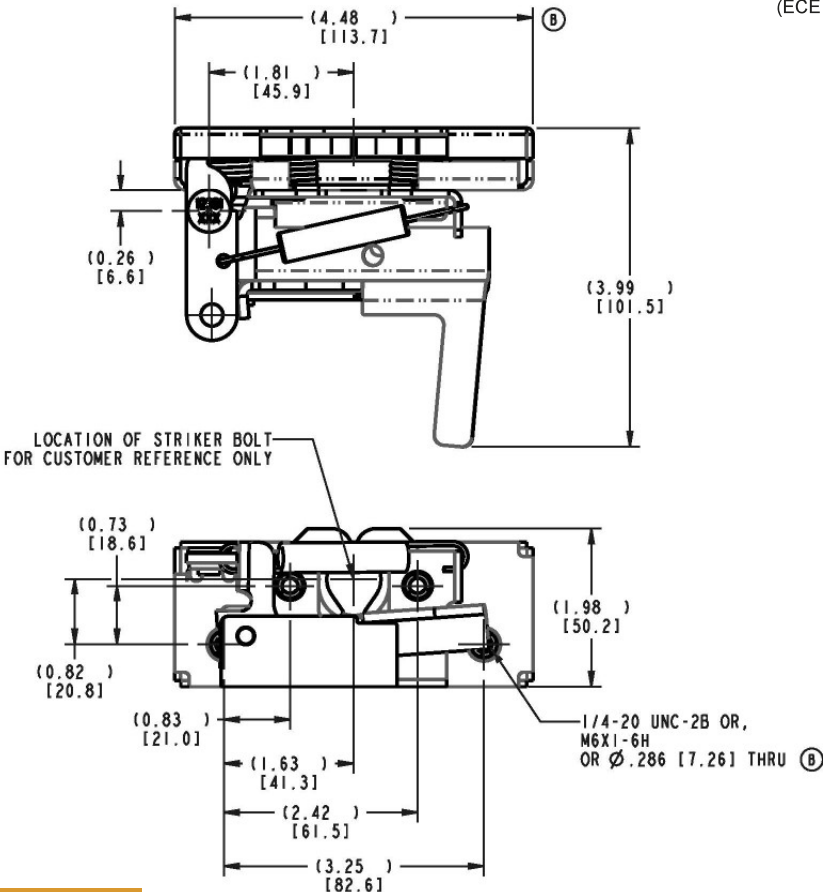
- Internal latch components: Heat treated, smooth edge stamped steel
- Case halves: High strength steel
- Springs: Non-corrosive stainless steel

INTERNAL LUBRICATION:

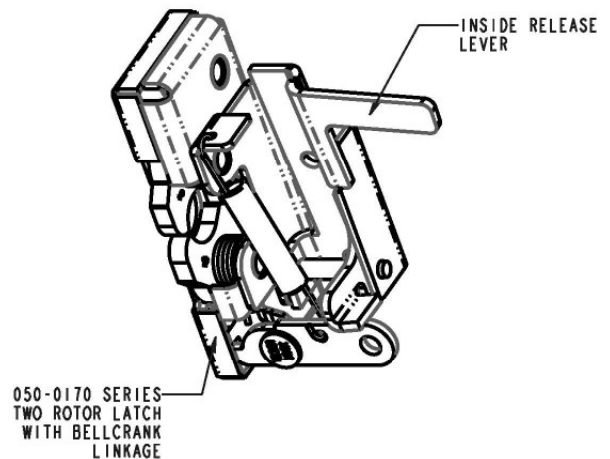
- Oven-cured dry lubricant is applied at factory on all critical moving parts

Note that this 050-0170 Two-Rotor Latch With Bellcrank Linkage complies with FMVSS 206 (ECE R11) when tested accordance with SAE J839 and that this product meets FMVSS 206 (ECE R11) load requirements and may be used in FMVSS 206 (ECE R11) applications pending TriMark application approval. Please refer to page 158 for the complete FMVSS 206 (ECE R11) statement.

Caution: Product does not meet the locking requirements for FMVSS 206 (ECE R11).



All dimensions are for reference only. For more information visit www.trimarkcorp.com



050-0200 Slimline Rotary Latch

This compact single rotor latch is designed for light to medium applications for on or off-highway entrance doors, compartments and access panels. It features a variety of trip levers and mounting axles for ease of mounting and applications and is FMVSS 206 (ECE R11) compliant.



- Thin, light or medium weight door applications
- Door weights up to 75 lbs. (34 kg)
- Door seal pressures of 20-25 lbs. (9-11 kg) recommended for best results (not to exceed 50 lbs. (23 kg))
- Visible surface installation or concealed installation
- Use with TriMark 070-0100 Striker Bolt

AVAILABLE:

- Left or right hand configurations (left hand shown)
- With standard .265" (6.7mm) diameter "thru" axles as shown, 1/4-20 UNC threaded axles or M6 x 1.0 threaded axles

FINISH:

- Zinc plated, clear chromate steel components
- Stainless steel

MATERIAL:

- Internal latch components: Heat treated smooth edge stamped steel
- Springs: Non-corrosive stainless steel
- Case halves: High strength steel

All dimensions are for reference only. For more information visit www.trimarkcorp.com

INSTALLATION:

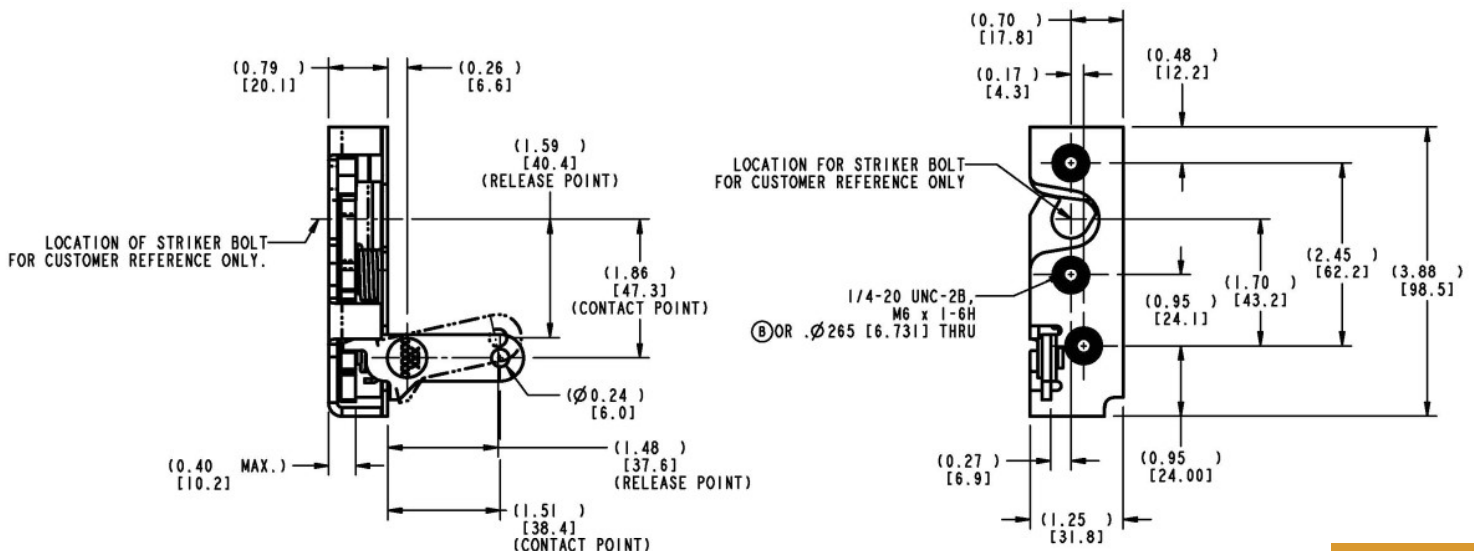
- (3) 1/4-20 UNC grade 5-type or M6 x 1 class 8.8 or better fasteners are recommended
- Vertical mounting with support ramp at top is required for proper alignment and subsequent engagement of locking pawl and striker bolt
- Tighten to the fastener manufacturers' recommended torque value, however, do not exceed 120 in-lbs. (13.3 N-m)
- Note: In order to pass the FMVSS 206 (ECE R11) strength requirements for this latch family, latches that contain 1/4-20 UNC or M6 x 1.0 threaded axles must utilize fasteners that have sufficient length so that the end of the fastener passes completely through the entire axle and extend beyond the outside surface of the latch case

INTERNAL LUBRICATION:

- Oven-cured dry lubricant is applied on all critical moving parts

U.S. Patent No. 7,156,430 / 7,320,488

Note that this 050-0200 Slimline Rotary Latch complies with FMVSS 206 (ECE R11) when tested accordance with SAE J839 and that this product meets FMVSS 206 (ECE R11) load requirements and may be used in FMVSS 206 (ECE R11) applications pending TriMark application approval. Please refer to page 158 for the complete FMVSS 206 (ECE R11) statement.



Other 050-0200 Slimline Latches

DESIGNED FOR:

- Thin, light or medium weight door applications requiring resistance to dust and vibration
- Door weights up to 75 lbs. (34 kg)
- Door seal pressures of 20-25 lbs. (9-11 kg) recommended for best results. Not to exceed 50 lbs. (23 kg)
- Visible surface installation or concealed installation
- Applications where it is desirable to have the release mechanism in line with the latch (050-0204)
- Applications where it is desirable to have a single position rotor latch (050-0210)
- Use with TriMark 070-0100 Striker Bolt

AVAILABLE:

- Left or right hand configurations
- With standard .265" (6.7mm) diameter "thru" axles as shown, 1/4-20 UNC threaded axles or M6 x 1.0 threaded axles

FINISH:

- Zinc plated, clear chromate steel components

MATERIAL:

- Internal latch components: Heat treated smooth edge stamped steel
- Springs: Non-corrosive stainless steel
- Case halves: High strength steel

INSTALLATION:

- (3) 1/4-20 UNC grade 5-type or M6 x 1 class 8.8 or better fasteners are recommended
- Vertical mounting with support ramp at top is required for proper alignment and subsequent engagement of locking pawl and striker bolt
- Tighten to the fastener manufacturers' recommended torque value, however, do not exceed 120 in-lbs. (13.3 N-m)
- Use with TriMark 070-0100 Striker Bolt

INTERNAL LUBRICATION:

- Oven-cured dry lubricant is applied on all critical moving parts
- Additional lubrication to be applied in the field if required

All dimensions are for reference only. For more information visit www.trimarkcorp.com



050-0204 Slimline Latch With Inline Trip Lever

Note that this 050-0200 Slimline Rotary Latch complies with FMVSS 206 (ECE R11) when tested accordance with SAE J839 and that this product meets FMVSS 206 (ECE R11) load requirements and may be used in FMVSS 206 (ECE R11) applications pending TriMark application approval. Please refer to page 158 for the complete FMVSS 206 (ECE R11) statement.



050-0210 Slimline Rotary Latch Single Position

Caution: Single position rotary latches do not comply with FMVSS 206 (ECE R11) requirements.

050-0250 Single Rotor Latch & Linkage Assembly

This latch and linkage system is intended for occupant or exit/entry doors for recreational vehicles including motor homes, travel trailers and specialty vehicles including ambulance, fire/rescue and off-highway vehicles (light duty) that require compliance to FMVSS 206 (ECE R11) standards. The flexible design allows for internal or external door mounting and provides automotive logic function with remote activating handles.

- Door weights up to 75 lbs. (34 kg)
- Door seal pressures of 20-25 lbs. (9-11 kg) recommended for best results (not to exceed 50 lbs. (23 kg))
- Use with TriMark 070-0100 Striker Bolt

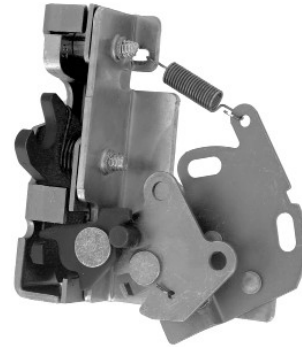
AVAILABLE:

- Right or left hand configurations (left hand shown)
- Improved versions are available with increased mechanical advantage that reduce the release efforts at the exterior and interior handles. These versions retrofit with previous part numbers but may require connecting rod revisions, due to the increased length of the linkage and slightly revised rod connections points.
- Optional spacer plates may be required and is dependent upon the door frame thickness and the particular assembly used. Please consult TriMark engineering for the spacer plate distance required. Spacer plate is available to facilitate interior door mounting.

FINISH:

- Zinc plated, clear chromate steel components
- Stainless steel springs

All dimensions are for reference only. For more information visit www.trimarkcorp.com



MATERIAL:

- Internal latch components: Heat treated, smooth edge stamped steel
- Springs: Non-corrosive stainless steel
- Case halves: High strength steel

INSTALLATION:

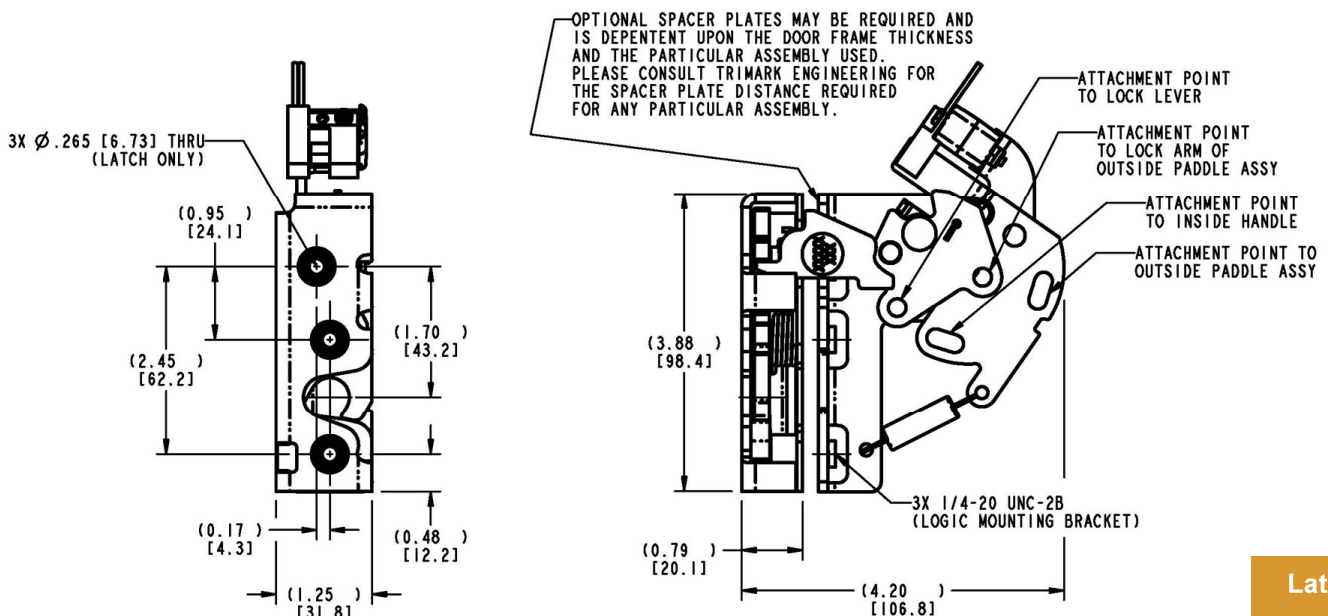
- Can be mounted inside or outside of door edge
- (3) 1/4-20 UNC grade 5-type or better fasteners are recommended (not included)
- Tighten to the manufacturers' recommended torque value, however, do not exceed 120 in-lbs (13.3 N-m)

INTERNAL LUBRICATION:

- Oven-cured dry lubricant is applied on all critical moving parts

U.S. Patent No. 7,156,430 / 7,320,488

Note that this 050-0250 Single Rotor Latch & Linkage Assembly complies with FMVSS 206 (ECE R11) when tested accordance with SAE J839 and that this product meets FMVSS 206 (ECE R11) load requirements and may be used in FMVSS 206 (ECE R11) applications pending TriMark application approval. Please refer to page 158 for the complete FMVSS 206 (ECE R11) statement.



050-0275 Slimline Cargo Latch

This compact single rotor latch is designed for light duty applications for on-road utility cargo doors. This latch is not designed to comply with FMVSS 206 (ECE R11) requirements.

- Thin, light weight door applications
- Door weights up to 75 lbs. (34 kg)
- Door seal pressures of 20-25 lbs. (9-11 kg) recommended for best results
- Non FMVSS 206 (ECE R11) applications
- Use with TriMark 070-0100 Striker Bolt

FEATURES/BENEFITS:

- Compact size allows for more head clearance in a cargo door application
- The case design allows the latch to be mounted closer to the door top and bottom edge for non-protruding striker details
- Allows for use with a hoop type striker (please inquire)

AVAILABLE:

- Left or right hand configurations (left hand shown)
- With 1/4-20 axles as shown or (optional) .265" "thru" axles or M6 x 1.0 threaded axles
- Other actuation levers are available — please inquire

FINISH:

- Zinc plated, clear chromate steel components
- Stainless steel springs



MATERIAL:

- Internal latch components: Heat treated, smooth edge stamped steel
- Springs: Non-corrosive stainless steel
- Case halves: High strength steel

INSTALLATION:

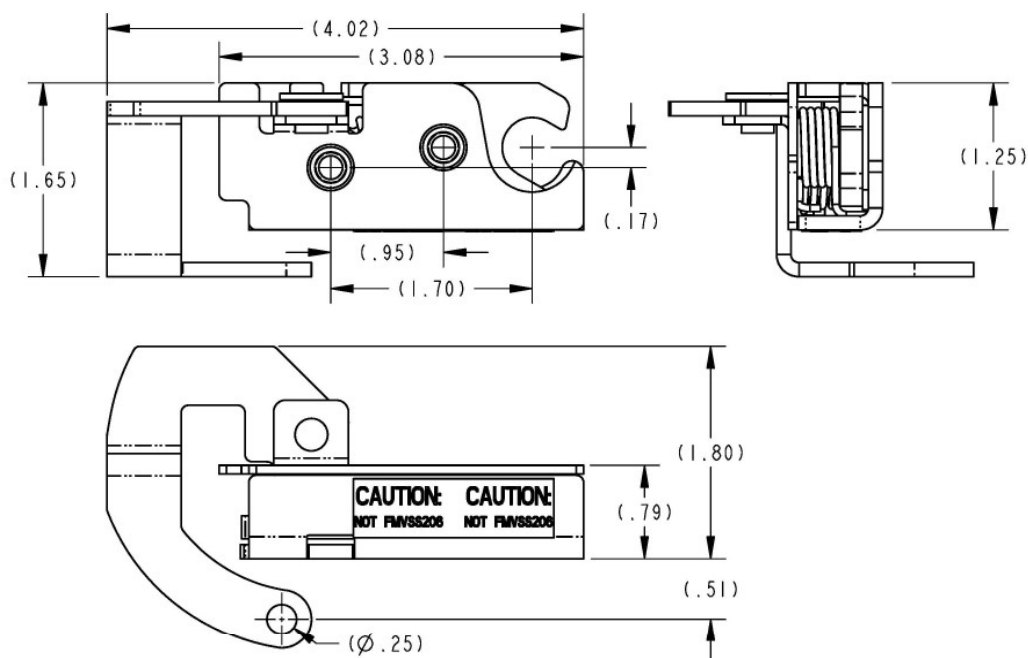
- (2) 1/4-20 UNC or M6 x 1.0 fasteners are recommended
- Tighten to the fastener manufacturers' recommended torque value, however, do not exceed 120 in-lbs. (13.3 N-m)

INTERNAL LUBRICATION:

- Oven-cured dry lubricant is applied on all critical moving parts

Caution: Latch does not meet FMVSS 206 (ECE R11) load requirements.

All dimensions are for reference only. For more information visit www.trimarkcorp.com



Latches:

Single Rotor
20

050-0300 Single Rotor Latch

This compact single rotor latch is designed for light to medium applications for on or off-highway compartment doors and access panels. It features a single or two position compact rotary and is available in a variety of trip levers and mounting axles for ease of mounting applications.

- Most storage, compartment and access doors
- Windows
- Any application where finger or remote release is desired
- Use with TriMark 070-0100 Striker Bolt

MATERIAL:

- Strike, rotor and rotor catch: Heat treated, smooth edge stamped steel
- Case halves: Zinc plated, mild steel components

AVAILABLE:

- Latch is non-handed, but trip lever handing is available
- With (2) 1/4-20 UNC or M6 x 1.0 threaded axles or .265" (6.7mm) diameter "thru" axles

All dimensions are for reference only. For more information visit www.trimarkcorp.com



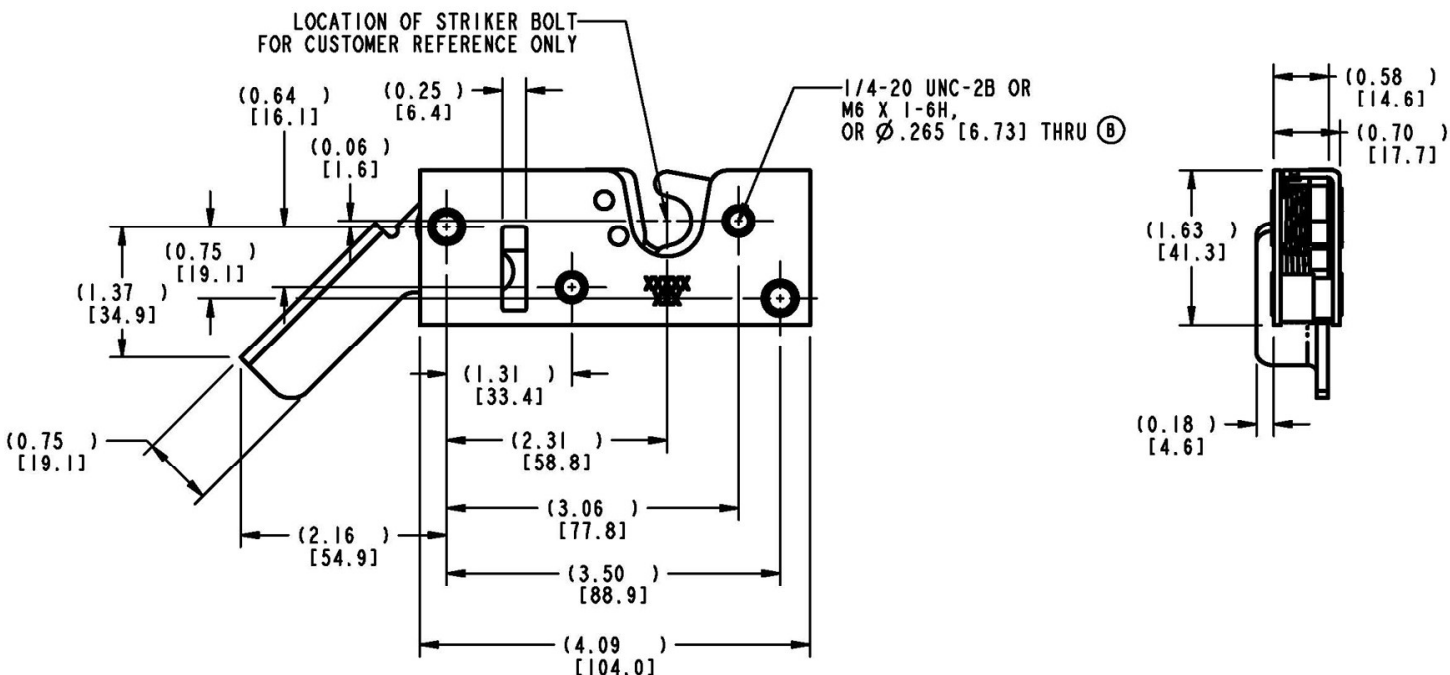
INSTALLATION:

- (2) 1/4-20 UNC grade 5-type or M6 x 1.0 class 8.8 or better fasteners are required (not included)
- Tighten to fastener manufacturers' recommended torque value, however, do not exceed 120 in-lbs. (13.3 N-m)

INTERNAL LUBRICATION:

- Oven-cured dry lubricant is applied to catch and rotor

Caution: Latch does not meet FMVSS 206 (ECE R11) load requirements.



050-0400 Floating Striker Single Rotor Latch

This robust single rotor latch is designed for medium to heavy-duty applications for on or off highway entrance doors, compartments and access panels. It features a vertical clearance rotor for high vibration applications and is available in a variety of trip levers and mounting axles for ease of mounting/application and is FMVSS 206 (ECE R11) compliant.



- Door thicknesses of 1-7/8" (47.6mm) or greater
- Door weights of 50-200 lbs. (23-91 kg)
- Door seal pressures of up to 150 lbs. (68 kg) (For best results, less than 50 lbs. (23 kg) suggested for best results)
- Visible surface installation or concealed inside installation
- Use with TriMark 070-0201 Striker Bolt

FEATURES/BENEFITS:

- Allows for $\pm .143$ " (3.63mm) strike travel from .789" (19.91mm) locating dimension
- Ideal for applications with high vibration loading and where controlled travel between the latch and strike is characteristic of the application
- Single position rotary style latching

FINISH:

- Zinc plated, clear chromate steel components

MATERIAL:

- Internal latch components: Heat treated, smooth edge stamped steel
- Case halves: High strength steel
- Springs: Non-corrosive stainless steel

INSTALLATION:

- (4) 1/4-20 UNC grade 5 or M6 x 1 class 8.8-type fasteners are required (not included)
- Tighten to the fastener manufacturers' recommended torque value, however, do not exceed 120 in-lbs. (13 N-m)
- Fastener mounting holes diameter should not exceed .281" (7.1mm)

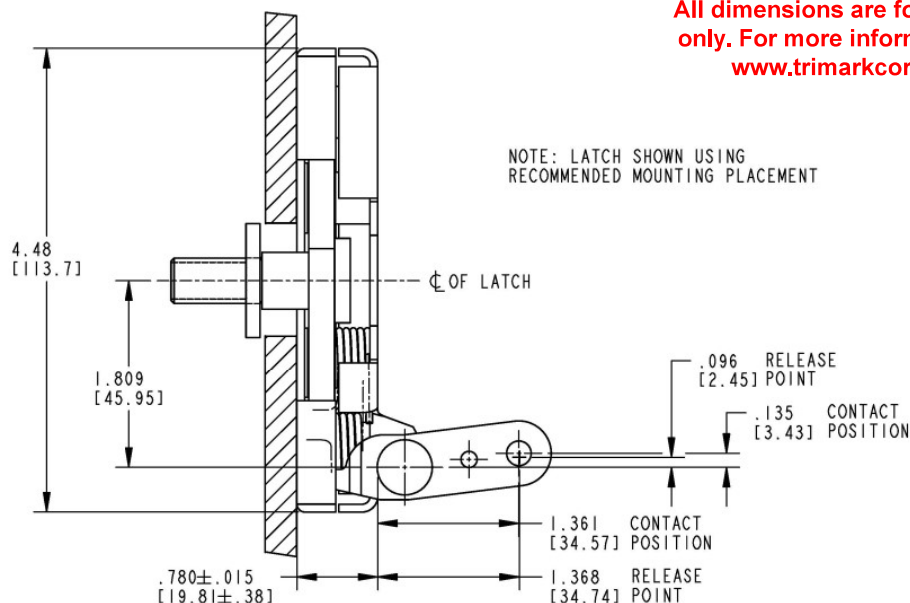
AVAILABLE:

- In left or right hand configurations (right hand shown)
- With (4) 1/4-20 UNC, M6 x 1 threaded axles or .286" (7.3mm) through axles
- With trip lever options

INTERNAL LUBRICATION:

- Oven-cured dry lubricant is applied at factory on all critical moving parts

Note that this 050-0400 Floating Striker Single Rotor Latch complies with FMVSS 206 (ECE R11) when tested accordance with SAE J839 and that this product meets FMVSS 206 (ECE R11) load requirements and may be used in FMVSS 206 (ECE R11) applications pending TriMark application approval. Please refer to page 158 for the complete FMVSS 206 (ECE R11) statement.



All dimensions are for reference only. For more information visit www.trimarkcorp.com

050-0410 Floating Striker Single Position Rotor Latch

This single rotor latch is a sub-platform to the proven 050-0400 series latch and is designed for medium to heavy-duty applications for on or off-highway compartments and access panels where it is desirable to have a single position latch.

- Applications requiring resistance to vibration
- Door thicknesses of 1-7/8" (47.6mm) or greater
- Door weights of 50-200 lbs. (23-91 kg)
- Door seal pressures of up to 150 lbs. (less than 50 lbs. suggested for best results)(23-68 kg)
- Visible surface installation or concealed inside installation
- Use with TriMark 070-0201 Striker Bolt

FEATURES/BENEFITS:

- Allows for $\pm .143$ " (3.63) strike travel from .789" (19.91) locating dimension
- Ideal for applications with high vibration loading and where controlled travel between the latch and strike is characteristic of the application
- Single position rotary style latching action

FINISH:

- Zinc plated, clear chromate steel components

MATERIAL:

- Internal latch components: Heat treated, smooth edge stamped steel
- Case halves: High strength steel

All dimensions are for reference only. For more information visit www.trimarkcorp.com



- Springs: Non-corrosive stainless steel

INSTALLATION:

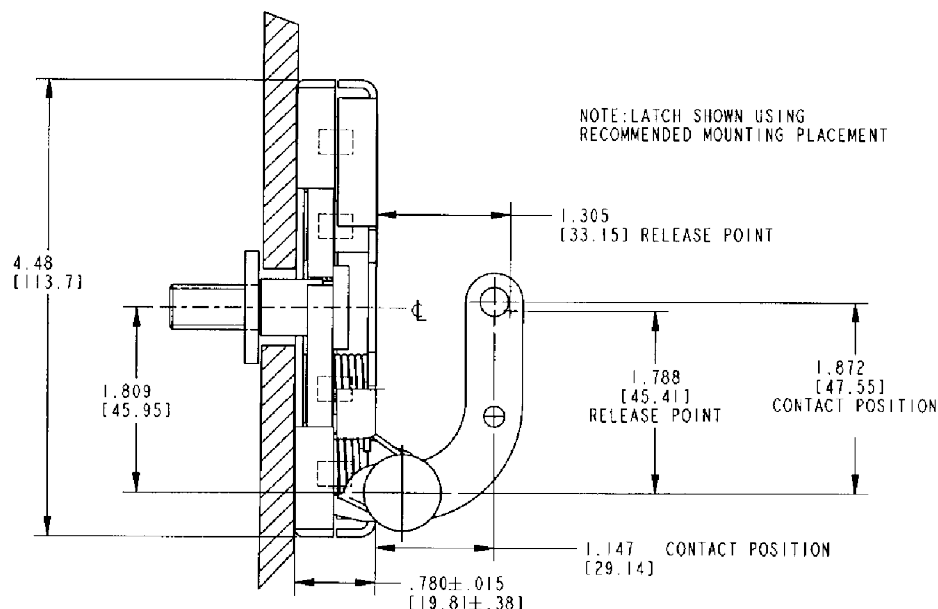
- (4) 1/4-20 UNC grade 5 or M6 x 1 class 8.8-type fasteners are required (not included)
- Tighten to the fastener manufacturers' recommended torque value, however, do not exceed 120 in-lbs. (13 N-m)
- Fastener mounting holes diameter should not exceed .281" (7.1 mm)

AVAILABLE:

- In left or right hand configurations (right hand shown)
- With (4) 1/4-20 UNC, M6 x 1 threaded axles or .286" through axles
- With trip lever options

INTERNAL LUBRICATION:

- Oven-cured dry lubricant is applied at factory on all critical moving parts



050-0500 Single Rotor Mini Latch

Designed for small compartment and access doors where low cost slam action latching is desired. It features a single or two position compact rotary and is available in a variety of trip levers and mounting axles for ease of mounting and applications

- Pickup box lids and cross bed tool boxes
- Light weight door applications
- RV baggage doors
- Door closing forces of 15-20 lbs. (6.8-9 kg) recommended for best results (not to exceed 50 lbs. (23 kg))
- Release efforts are approximately proportional to door closing forces striker bolt load
- Use with TriMark 070-0300 Striker Bolt

FEATURES/BENEFITS:

- Compact size
- Low cost
- Single position rotary style latching action
- Double position also available

AVAILABLE:

- Right and left hand configurations (left hand shown)
- With (2) 1/4-20 UNC threaded axles (not included)
- Base mount
- With rod collars attached

MATERIAL:

- Internal latch components and case halves: High-strength steel
- Springs: Non-corrosive stainless steel



FINISH:

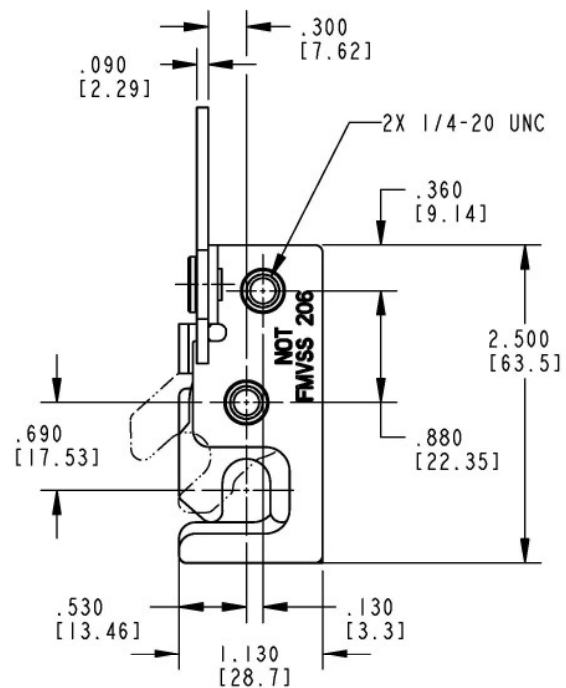
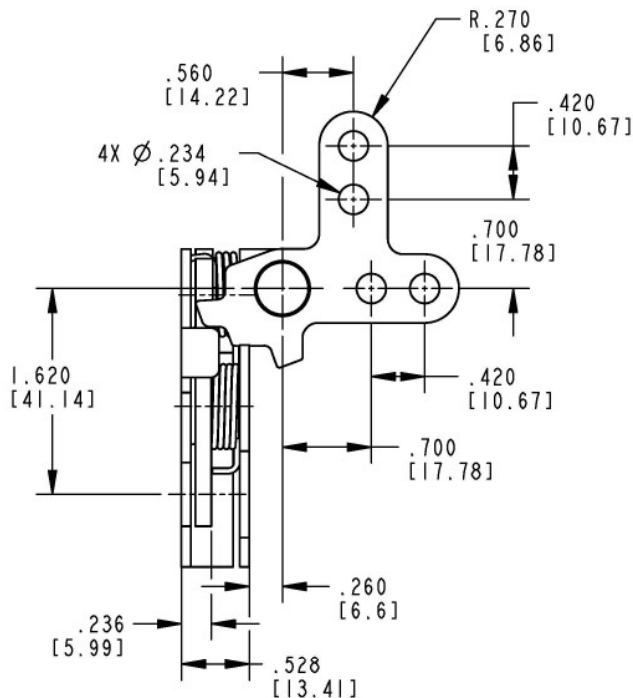
- Zinc plated, clear chromate
- Stainless steel

INSTALLATION:

- (2) 1/4-20 UNC mounting fasteners (not included)
- Custom mounting brackets and release levers upon request
- Tighten to the manufacturers' recommended torque value, however, do not exceed 100 in-lbs. (11.2 N-m)

NOTE: Rod collars are not intended or recommended for use in applications that require FMVSS 206 (ECE R11) compliance or applications that have heavy or extreme striker bolt loads (greater than 25 lbs. / 11 kg) and/or high to extreme usage (greater than 100,000 door cycles/life).

Caution: Latch does not meet FMVSS 206 (ECE R11) load requirements.



All dimensions are for reference only. For more information visit www.trimarkcorp.com

050-0600 Single Rotor Compartment Latch

This latch is intended for storage and compartment doors for off-road vehicles including agricultural and construction equipment. The robust construction and compact size at a very cost effective price make it a great choice for light to medium duty compartment door applications.

- Access panels and hoods for off-highway vehicle applications
- Applications where it is desirable to have a single rotor latch that offers robust construction and compact size for a very cost effective price
- Use with TriMark 070-0400 Striker Bolt

FEATURES/BENEFITS:

- Compact size
- Use with 12mm diameter striker or standard bar stock
- Mounts with (2) M8 x 1.25 fasteners (not included)
- Threaded axle version provides ease of installation

AVAILABLE:

- Right or left hand configurations (left hand shown)
- Single or two position rotary style latching function
- Several standard release actuators are available



INSTALLATION:

- Installed with (2) M8 x 1.25 bolts (not included)
- Tighten to the manufacturers' recommended torque value, however, do not exceed 22.2 N-m (180 in-lbs)

FINISH:

- Zinc plated, clear chromate steel components

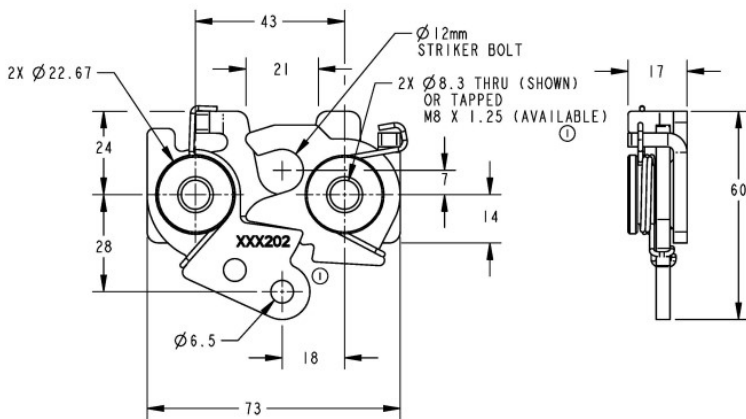
MATERIAL:

- Case and actuator: High strength steel
- Springs: Non-corrosive stainless steel

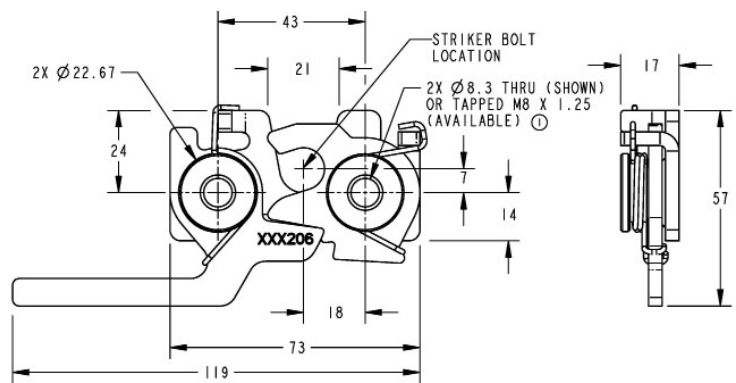
Caution: Latch does not meet FMVSS 206 (ECE R11) load requirements.

The following drawings show standard versions of the 050-0600 and do not depict all of the configurations available. Please refer to the website for additional information.

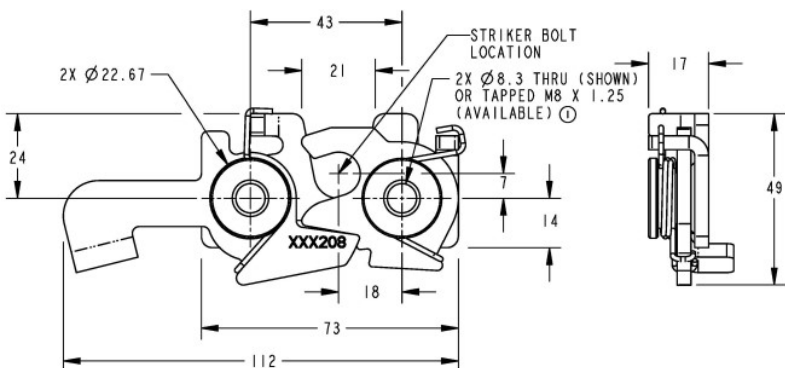
Version A



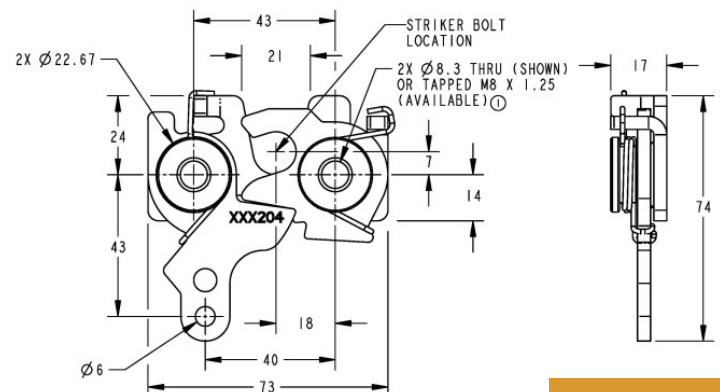
Version C



Version B



Version D



All dimensions are for reference only. For more information visit www.trimarkcorp.com

050-0700 12mm Single Rotor Latch

This compact single rotor latch is designed for use on light to medium duty operator and compartment doors for on or off-highway applications. There are a number of variants allowing it to interface with TriMark's range of external and internal methods of activation for application flexibility.

- Operator and compartment door applications for on and off-highway vehicles
- Light to medium duty doors up to 25 kg (55 lbs.) with door seal pressures no greater than 20 kg (44 lbs.)
- Use with TriMark 070-0400 Striker Bolt

FEATURES/BENEFITS:

- Compact size and shape; allows maximum visibility and use of door space
- Four standard variants; provides application flexibility
- Black finish reduces the need for secondary painting or covers

AVAILABLE:

- Versions are available to allow direct or remote actuation from exterior handles and interior release
- Standard left and right hand versions; allows use in either orientation (right hand shown)
- Standard M8 x 1.25 threaded axles as shown or 8.4mm diameter "thru" axles



MATERIAL:

- Rotor: Heat treated steel
- Case halves: High strength steel
- Springs: Non-corrosive stainless steel
- Inside release knob: Die cast zinc alloy
- Push button bellcrank: Die cast zinc alloy

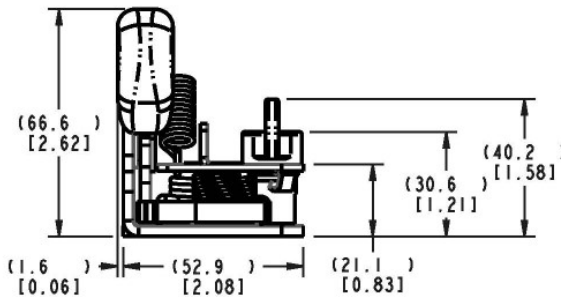
FINISH:

- Zinc plated steel components with black chromate

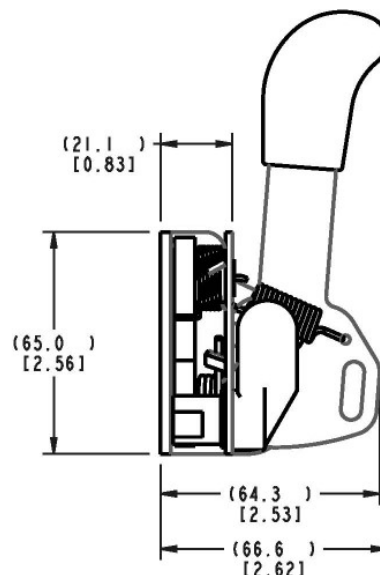
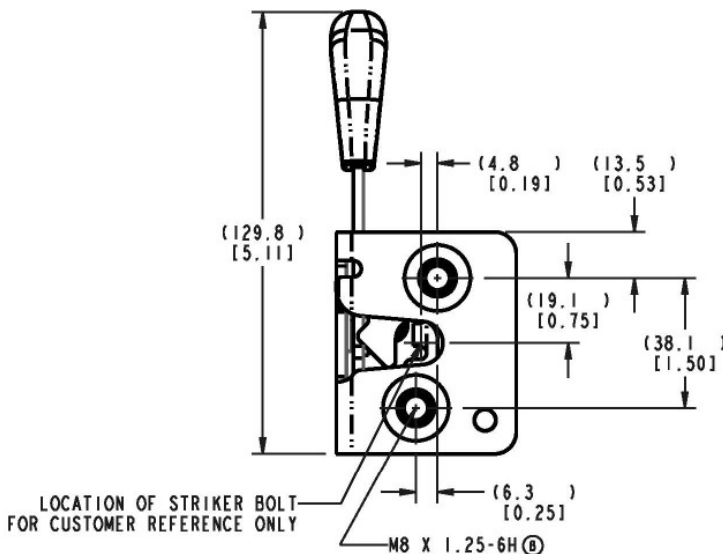
INSTALLATION:

- M8 x 1.25 threaded axle; provides ease of (2) installation (Tighten to the fastener manufacturer's recommended torque value)

Caution: Latch does not meet the load requirements for FMVSS 206 (ECE R11).

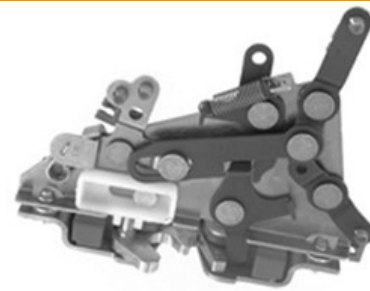


All dimensions are for reference only. For more information visit www.trimarkcorp.com



050-0810 Single Rotor Latch Logic

This latch system is intended for occupant or exit/entry doors for specialty vehicles including ambulance, fire/rescue and off-highway vehicles (light duty) that require compliance to FMVSS 206 (ECE R11) standards. The flexible design allows for internal or external door mounting and provides automotive logic function with remote activating handles.

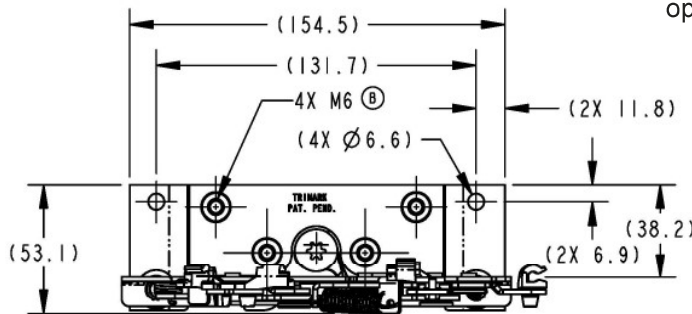


- Applications where it is desirable to have the ability to electronically lock the door
- Medium to heavy weight door applications
- Door weights up to 150 lbs. (68 kg) maximum
- Door seal pressures of 25-50 lbs. (11-23 kg) recommended for best results
- Use with TriMark 070-0201 Striker Bolt

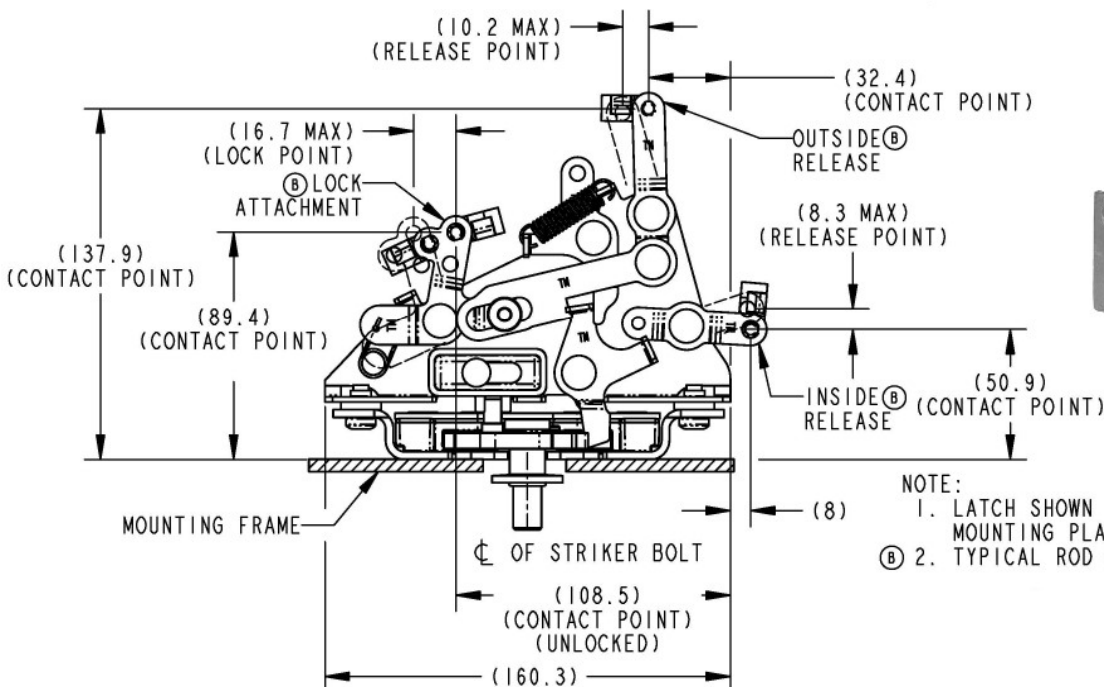
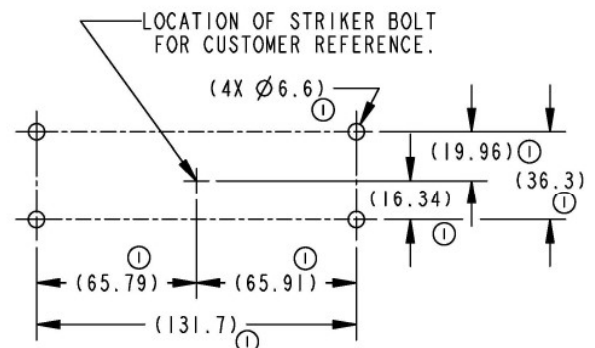
All dimensions are for reference only. For more information visit www.trimarkcorp.com

FEATURES/BENEFITS:

- Provides automotive locking logic function
- Mounts in doors requiring latch location remote from activating handles
- Latch and logic has a no lock-out detail that will not allow you to lock the door unless it is closed and latched. This eliminates the possibility of inadvertently locking the keys in the vehicle.
- The logic provides an over-ride function that automatically unlocks the door when the inside door handle is operated. This feature provides egress without having to manually unlock the door before operating the handle.



INTERIOR AXLE MOUNTING CONFIGURATION



NOTE:
 1. LATCH SHOWN USING RECOMMENDED MOUNTING PLACEMENT.
 2. TYPICAL ROD Ø TO BE .168.



050-0810 continued

AVAILABLE:

- Right or left hand configurations (right hand shown)
- With (4) 1/4-20 UNC or M6 x 1 threaded axles
- Linkage rods available for your specific applications

FINISH:

- Zinc plated clear chromate steel components
- Linkage components are Nitrotec® treated for wear resistance

MATERIAL:

- Plastic encapsulated metal rotor and catch reduces friction and deadens the door closing sound
- Springs: Non-corrosive stainless steel
- Case halves: High strength steel

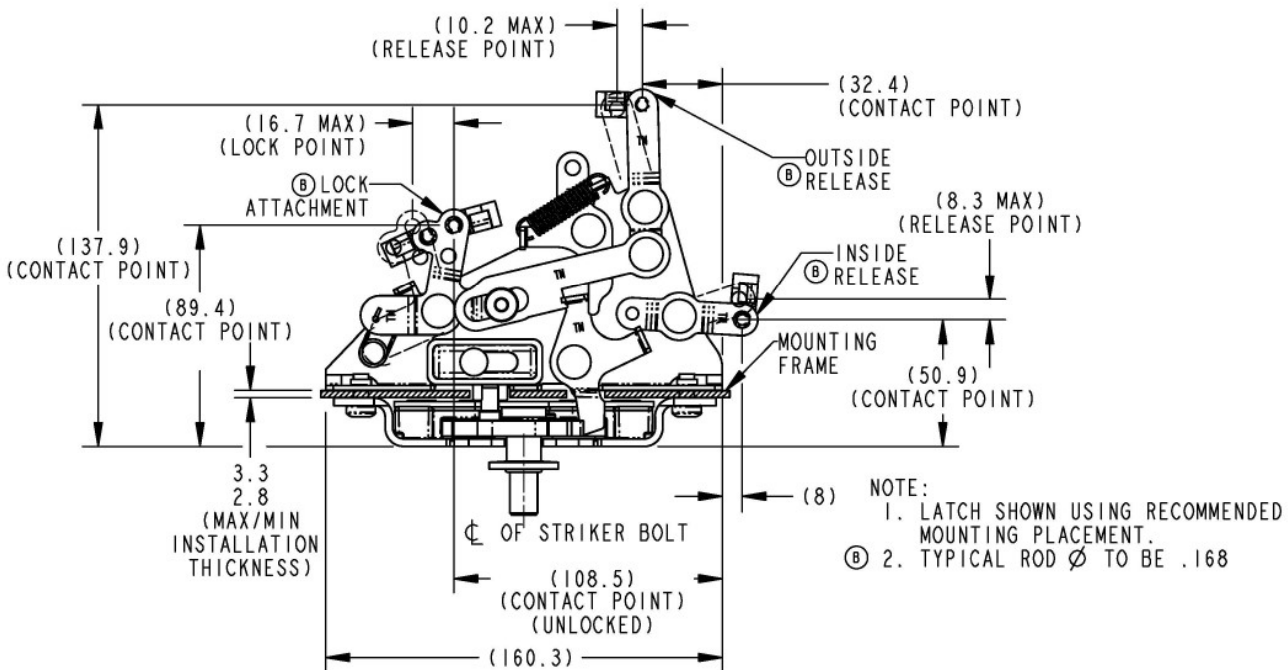
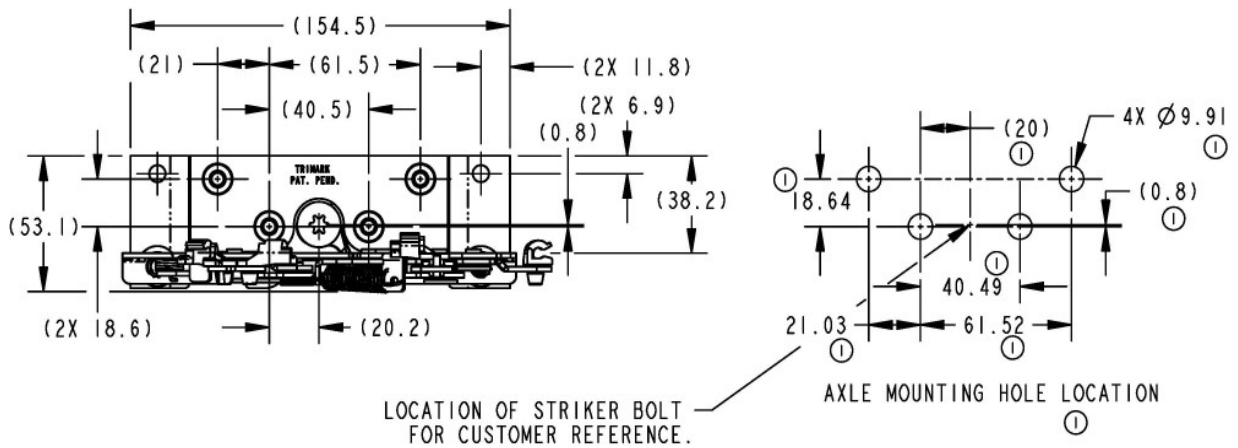
INSTALLATION:

- Can be mounted inside or outside of door edge
- (4) 1/4-20 UNC grade 5 or M6 x1 class 8.8 or better fasteners are recommended (not included)
- Tighten to the manufacturers' recommended torque value, however, do not exceed 72 in-lbs. (8 N-m)

U.S. Patent No. 6,494,506 / 6,695,361

Note that this 050-0810 Single Rotor Latch complies with FMVSS 206 (ECE R11) when tested accordance with SAE J839 and that this product meets FMVSS 206 (ECE R11) load requirements and may be used in FMVSS 206 (ECE R11) applications pending TriMark application approval. Please refer to page 158 for the complete FMVSS 206 (ECE R11) statement.

All dimensions are for reference only. For more information visit www.trimarkcorp.com



050-0850 TriGuard Heavy Duty Latch Module With Slam Cam Option

This heavy duty latch module is designed for medium to heavy-duty armored vehicle entrance and rear door applications. It features a proven single rotor latch design and high strength 8 gauge (4.2mm) front mounting plate with flange mounting.

- Medium to heavy duty doors greater than 200 lbs. (91 kg) with door seal pressures of 50-150 lbs. (23-60 kg)
- Use with TriMark 070-0201 Striker Bolt

FEATURES/BENEFITS:

- Heavy duty modular construction - survives in punishing environment
- Can be used on retrofit or new surface mount vehicle construction
- Heavy duty latch/striker with self-aligning "slam cam" provides rotor/cam assist to heavy doors, hinges and compensates for door sag

AVAILABLE:

- Right or left hand configurations (right hand shown)
- Striker with self-aligning "slam cam"
- Replaceable striker alignment lift blocks
- Custom configured release levers

FINISH:

- Zinc plated, clear chromate steel components

MATERIAL:

- Case halves: High strength steel
- Springs: Non-corrosive stainless steel

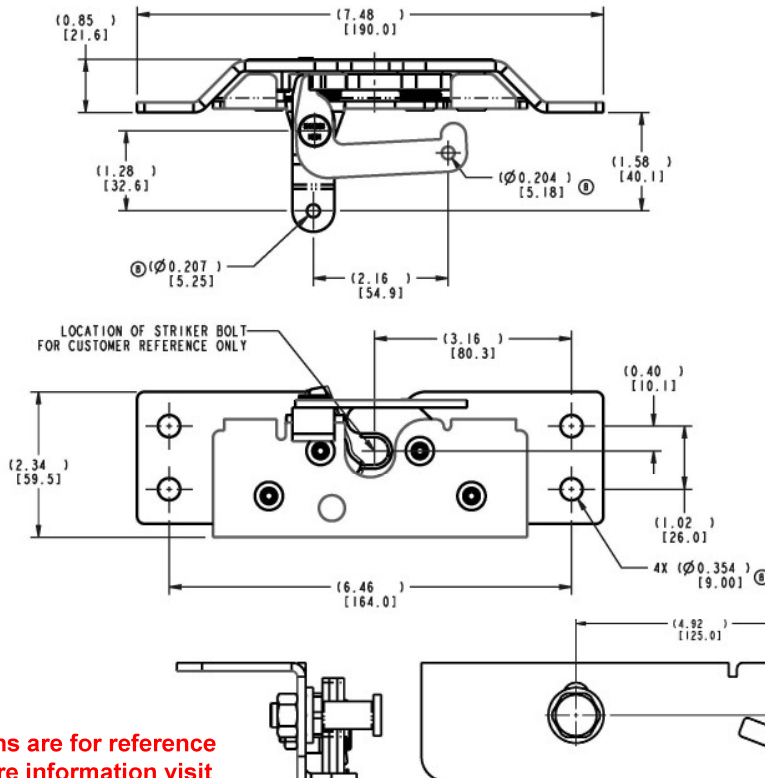


INSTALLATION:

- (4) M8 x 1.25 class 8.8 or better fasteners are recommended (not included)
- Tighten to the manufacturers' recommended torque value

U.S. Patent No. 7,938,458

Note that this 050-0850 TriGuard Heavy Duty Latch Module With Slam Cam complies with FMVSS 206 (ECE R11) when tested accordance with SAE J839 and that this product meets FMVSS 206 (ECE R11) load requirements and may be used in FMVSS 206 (ECE R11) applications pending TriMark application approval. Please refer to page 158 for the complete FMVSS 206 (ECE R11) statement.



Striker With Self-Aligning "Slam Cam"

All dimensions are for reference only. For more information visit www.trimarkcorp.com

050-1100 Family - 8mm Single Rotor Latch

This robust automotive style single rotor latch is designed for medium to heavy-duty applications for on or off-highway entrance doors, compartments and access panels. The modular design allows ease of interface with TriMark's range of external and internal methods of activation for application flexibility.

- Interior door thickness of 44mm (1.73") or greater
- Medium to heavy duty doors of 23-91 kg (50-200 lbs.) with door seal pressures of 23-60 kg (50-150 lbs.)
- Use with TriMark 070-1000 8mm Hoop Strike

FEATURES/BENEFITS:

- Compact size and shape; allows maximum use of door space and minimizes visibility issues
- Rotor provides for vertical clearance of strike allowing for door sag, misalignment and ease of installation
- Modular case design provides for multiple latch actuation direction and locations for application flexibility

AVAILABLE:

- Versions are available to allow direct or remote actuation from exterior handles and interior releases
- Platform allows for reuse of existing actuation trip levers (050-0100)
- Multiple actuation directions and locations
- Standard 8.4mm diameter through axles or optional M8 x 1.25 threaded axles



FINISH:

- Zinc plated, clear chromate steel components

MATERIAL:

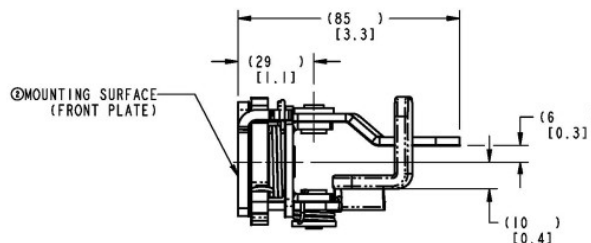
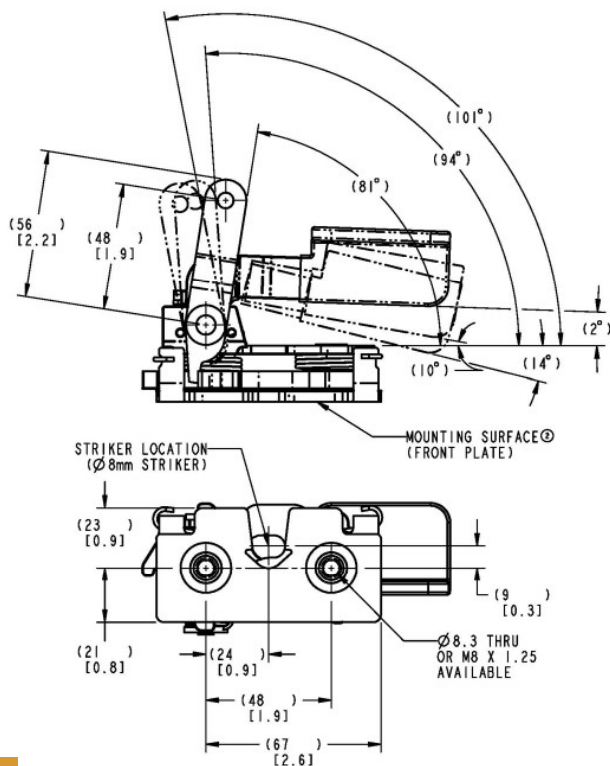
- Case halves: High strength steel
- Springs: Non-corrosive stainless steel

INSTALLATION:

- Easy to install, mounts with (2) M8 x 1.25 or 5/16 fasteners (not included)
- Tighten to the manufacturers' recommended torque value, however, do not exceed 22.2 N-m (180 in-lbs)
- Mount only to the front plate side

U.S. Patent No. 8,075,027

Caution: Latch does not meet FMVSS 206 (ECE R11) load requirements.



All dimensions are for reference only. For more information visit www.trimarkcorp.com

Latches:

Single Rotor
30

050-1200 Single Rotor Panel Latch

This product is designed for light to medium duty compartment doors, access panels and hoods for off-highway vehicle applications. The single rotor latch offers robust construction and compact size for a very cost effective price.

- Door weights of approximately 75 lbs. (34 kg)

FEATURES/BENEFITS:

- Compact size
- Use with 8mm diameter striker or standard bar stock
- Mounts with (2) M8 fasteners (not included)

AVAILABLE:

- Single handed configuration
- Single position rotary style latching function
- Direct or remote release actuators available
- Direct actuation - via tool drive 13mm hex with slot
- Remote actuation - via 4.5mm diameter hole on catch

INSTALLATION:

- Installed with (2) M8 fasteners (not included)
- Tighten to the manufacturers' recommended torque value
- Dual mounting faces

FINISH:

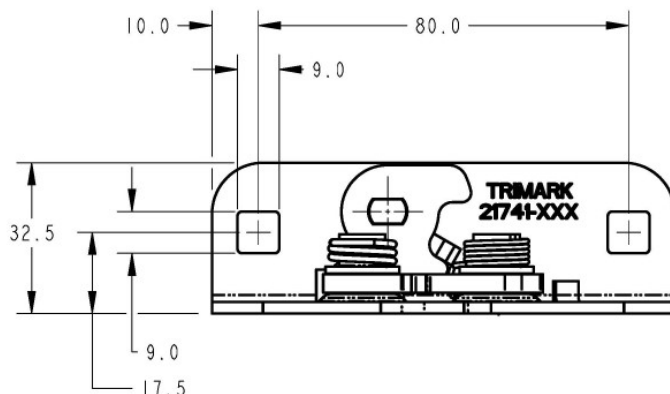
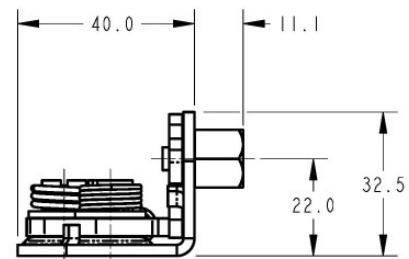
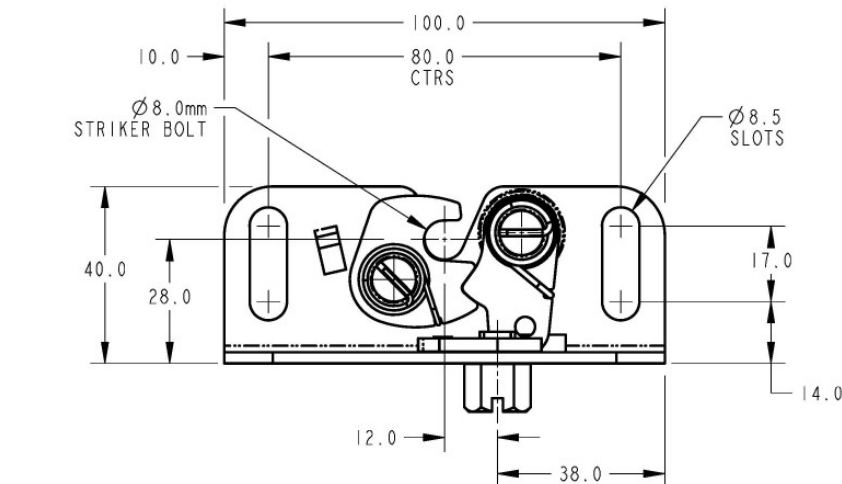
- Zinc plated, clear chromate steel components



MATERIAL:

- Actuator: Stainless steel
- Springs: Non-corrosive stainless steel
- Rotor and catch: Hardened carbon steel

Caution: Latch does not meet FMVSS 206 (ECE R11) load requirements.



All dimensions are for reference only. For more information visit www.trimarkcorp.com

050-1600 TriGuard Heavy Duty Single Rotor Latch

This latch is designed for medium to heavy-duty vehicle entrance and rear door applications. It features a proven single rotor latch design, high strength 8 gauge (4.2mm) front mounting plate and robust straddle mount release lever. The slim design mounts into 2.00" (50.8mm) doors and retrofits competitive single rotor wedge style rotary latches

- Medium to heavy duty doors greater than 91 kg (200 lbs) with door seal pressures of 23-60 kg (50-150 lbs.)
- Use with TriMark 070-0201 Striker Bolt

FEATURES/BENEFITS:

- Heavy duty modular construction - survives in punishing environments
- Can be used on retrofit or new surface mount vehicle construction
- .550" (13.9mm) diameter striker bolt

AVAILABLE:

- Right or left hand configurations (left hand shown)
- Custom configured release levers
- Other mount options (please inquire)
- Heavy duty latch/striker provides rotor/cam assist to heavy doors, hinges, and compensates for door sag



MATERIAL:

- Case halves: High strength steel
- Springs: Non-corrosive stainless steel
- Rotor and catch: Heat treated high strength steel with dry lube coating

FINISH:

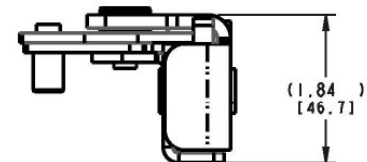
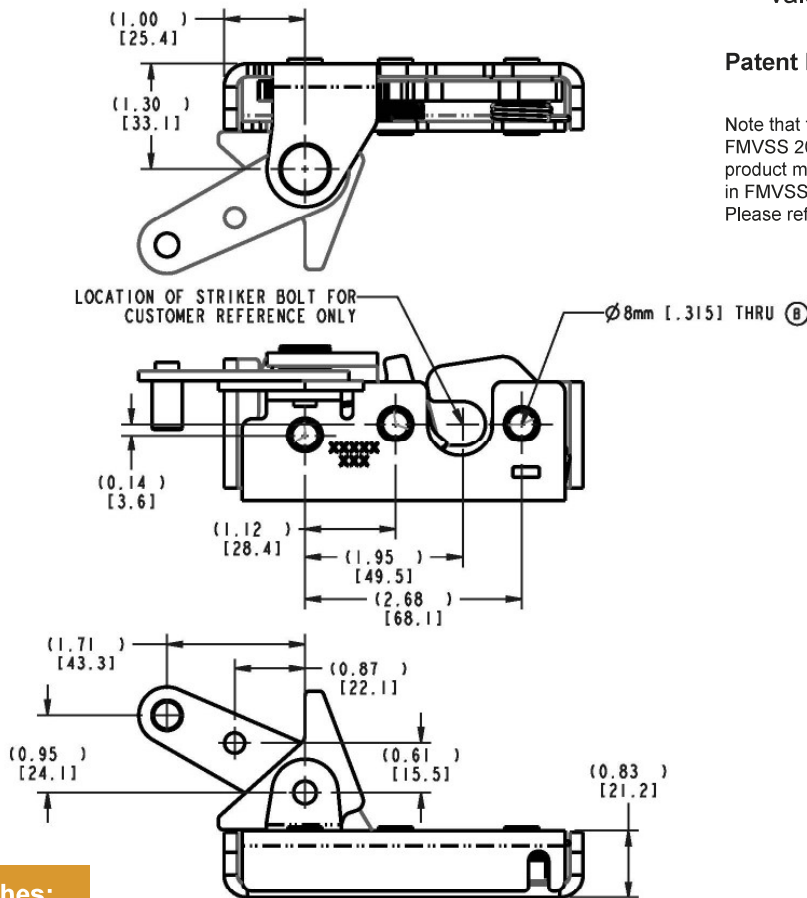
- Standard: RoHS compliant zinc plated, clear chromate steel components
- Optional: Powder coated or CARC finish in custom colors

INSTALLATION:

- (3) M8 x 1.25 class 8.8 or 5/16-18 UNC grade 8 or better fasteners are recommended (not included)
- Tighten to the manufacturers' recommended torque value

Patent Pending

Note that this 050-1600 TriGuard Heavy Duty Single Rotor Latch complies with FMVSS 206 (ECE R11) when tested accordance with SAE J839 and that this product meets FMVSS 206 (ECE R11) load requirements and may be used in FMVSS 206 (ECE R11) applications pending TriMark application approval. Please refer to page 158 for the complete FMVSS 206 (ECE R11) statement.



All dimensions are for reference only. For more information visit www.trimarkcorp.com

050-1900 8mm Single Rotary Latch



TriMark's newest innovation in rotary latches features a robust modular design that offers extensive actuation locations and options providing application flexibility in a compact design. Designed for medium to heavy-duty applications for on or off-highway applications, this single rotor latch is available in both FMVSS 206 (ECE R11) and non FMVSS 206 (ECE R11) configurations.

DESIGNED FOR:

- Personnel, compartment door and door hold-open applications for on and off-highway vehicles
- Interior door thickness of 45-57mm (1.77-2.25"). Depending on the actuator type and location the overall height could be greater. Please contact TriMark for specific details.
- Medium to heavy duty doors of 23-81 kg (50-175 lbs.) with maximum door seal pressure of 36 kg (80 lbs.)

FEATURES/BENEFITS:

- Modular case construction is preconfigured with multiple actuation points on the front case allowing top/bottom actuation including stacked actuator levers providing the most configurable rotary door latch ever offered
- Compact size and shape allows maximum use of door space and minimizes visibility issues without compromising strength and robustness
- Rotor provides for vertical clearance of strike allowing for door sag, misalignment and ease of installation
- Includes two versions:
 - ◇ Two position rotor version for personnel door for FMVSS 206 (ECE R11) applications
 - ◇ Single position version for compartment and door hold-open for non FMVSS 206 (ECE R11) applications
- 8mm diameter automotive style hoop-type strike minimizes clothing snag hazard

AVAILABLE:

- In left or right hand configurations (right hand shown)
- Versions are available to allow direct actuation from exterior push button or pull handles and interior releases providing a simple, low cost and compact application
- Platform allows for reuse of TriMark's extensive selection of existing actuation levers reducing application engineering and tooling requirements
- Several actuator return spring options

- Coaxial actuator mechanism for applications where it is desirable to provide additional support to the actuation levers
- Innovative barrel release with optional integrated cable bracket for ease of use/installation
- Future provisions for state sensing, power release mechanisms and slam cam door lift mechanism

MATERIAL:

- Case halves: High strength steel
- Rotor and catch: Heat treated steel
- Springs: Non-corrosive stainless steel

FINISH:

- Zinc plated, clear chromate steel components



Barrel Actuation With Direct Release
Cam and Top Direct Release Actuator

Cable Mount Bracket With
Barrel Actuation and Cam

INSTALLATION:

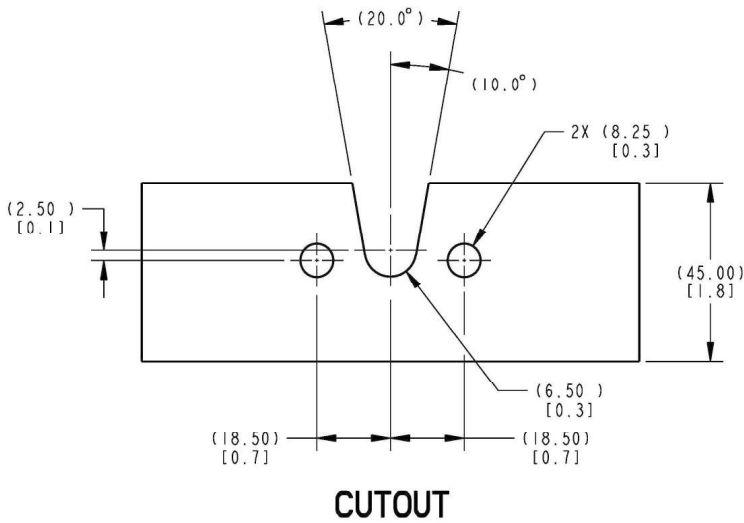
- Easy to install, mounts with (2) M8 x 1.25 class 8.8 or better fasteners are required for FMVSS 206 (ECE R11) applications (not included)
- Tighten to manufacturers' recommended torque value, however, do not exceed 22.2 N-m (180 in-lbs)

USE WITH:

- TriMark 070-1000 8mm Hoop Strike (required for FMVSS 206 (ECE R11) applications)



070-1000 8mm Hoop Strike

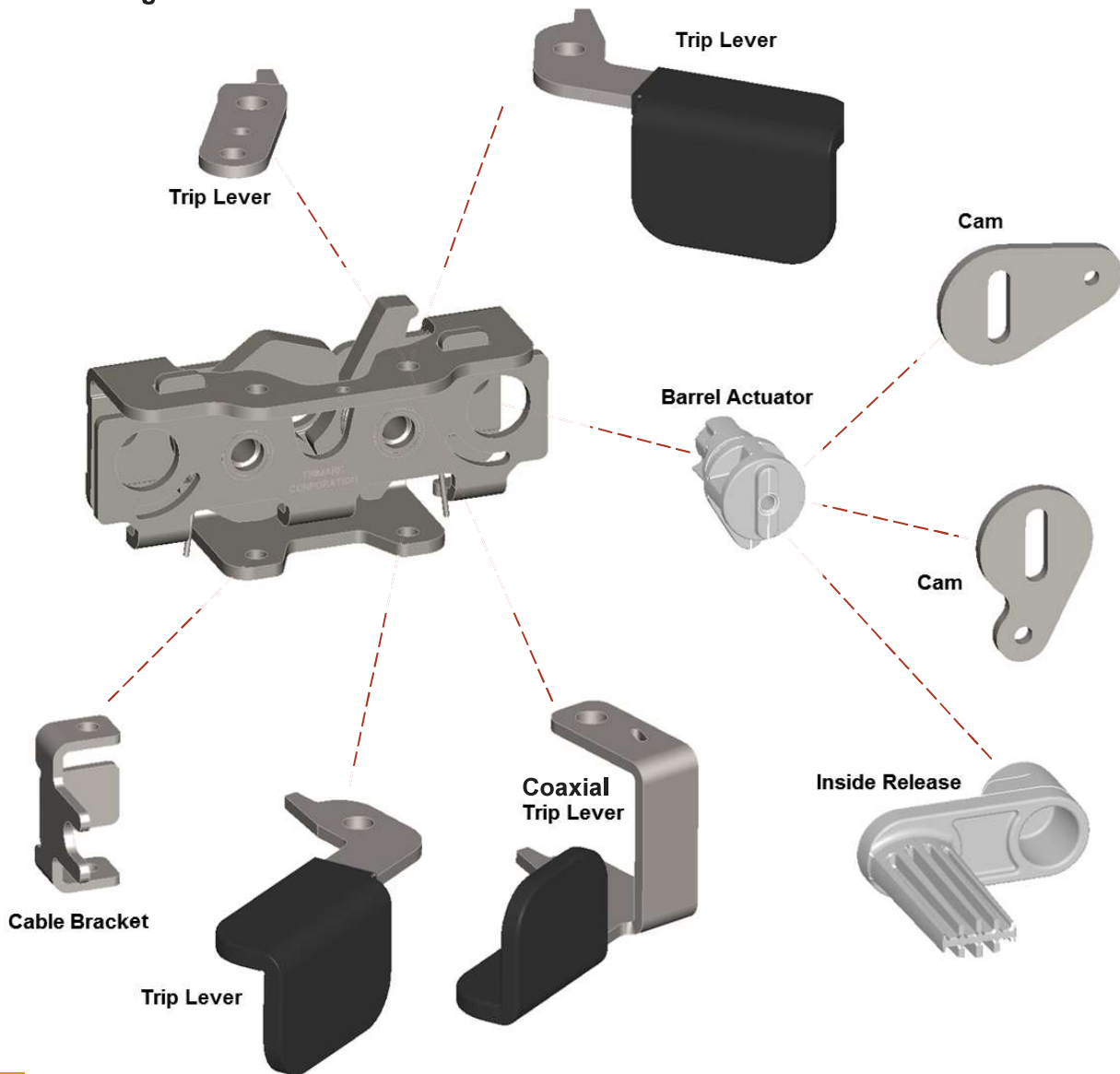


Patent(s) Pending

Note that this 050-1900 8mm Single Rotary Latch complies with FMVSS 206 (ECE R11) when tested in accordance with SAE J839 and that this product meets FMVSS 206 (ECE R11) load requirements and may be used in FMVSS 206 (ECE R11) applications pending TriMark application approval. Please refer to page 158 for the complete FMVSS 206 (ECE R11) statement.

All dimensions are for reference only. For more information visit www.trimarkcorp.com

Modular construction with multiple actuation points allows top/bottom actuation including stacked actuator levers.



050-7100 10mm Single Rotor Latch

The compact 050-7100 10mm Single Rotor Latch is designed for operator door applications for off-highway vehicles.

- Light to medium duty doors up to 45 Kg (100 lbs.) with door seal pressures no greater than 11 Kg (25 lbs.)

FEATURES/BENEFITS:

- Compact size and shape; requires minimum use of door space
- Two position rotary function suitable for personnel doors for FMVSS 206 and ECE-11 applications
- Inside release options
- Standard black finish reduces the need for secondary painting
- One variant supplied with latch plastic cover

AVAILABLE:

- Versions are available to allow direct or remote actuation from exterior push button or paddle handles
- With and without on latch direct release inside levers
- With left and right variants; provides application flexibility (right hand shown)

MATERIAL/FINISH:

- Inside release components: Nylon or steel with nylon knob
- Black plated steel case halves
- Cam and catch: Heat treated steel



INSTALLATION:

- Easy to install—recommended mounting fastener (2) M6 x 1.0 flat or oval head class 8.8 or better fasteners are required for FMVSS 206 (ECE R11) (not included)
- Tighten to the fasteners recommended torque value, however, do not exceed 6 to 8 N-m (53 to 70 in-lbs.)
- Latch mounting plate supplied, is required to meet FMVSS 206 (ECE R11) loads

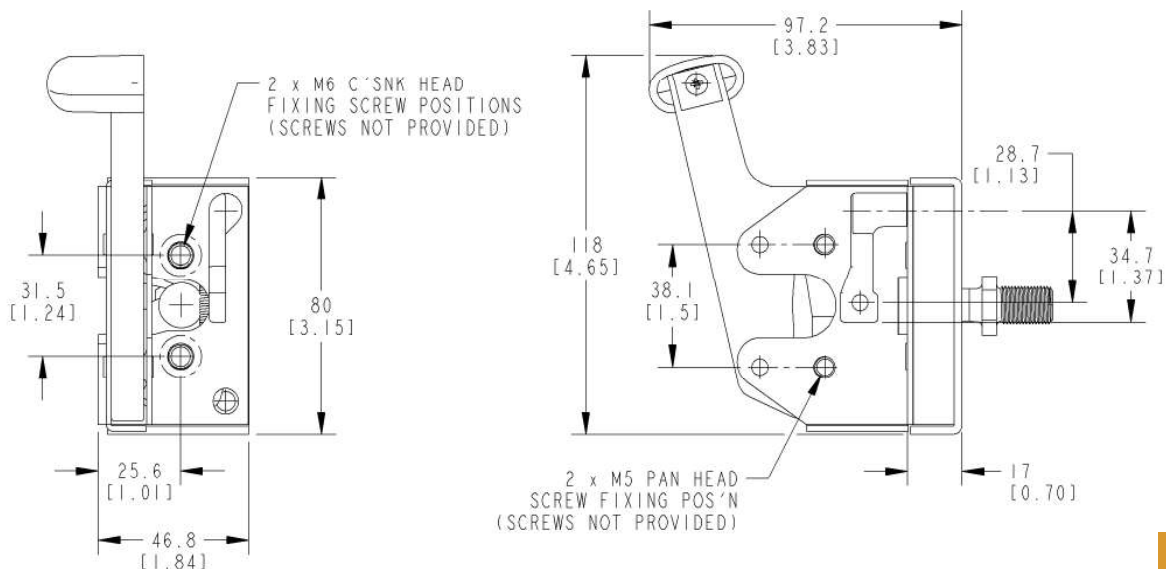
USE WITH:

- Latch Mounting Plate (included)
- 070-7100 10mm Striker Pin

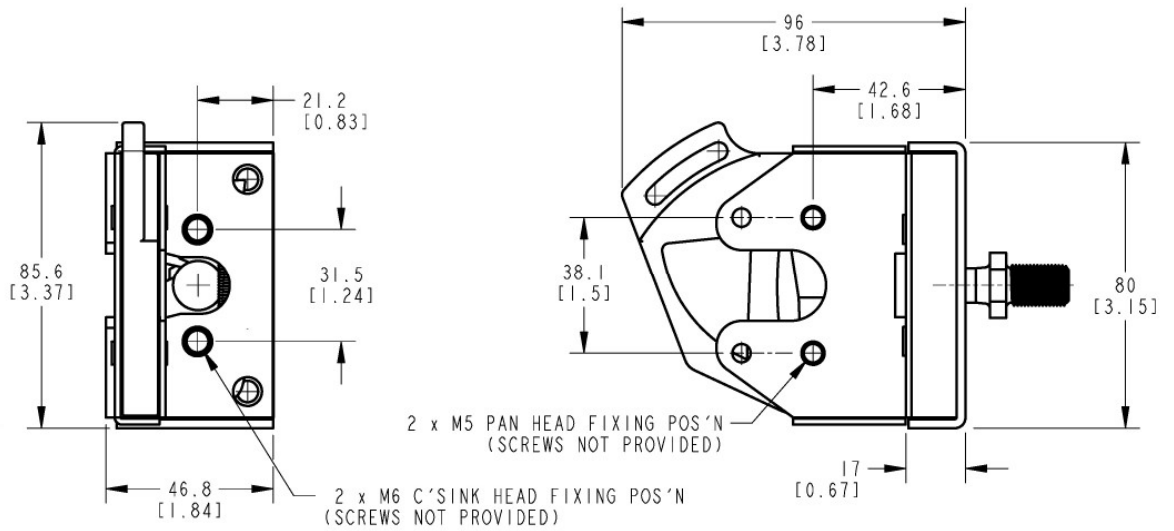
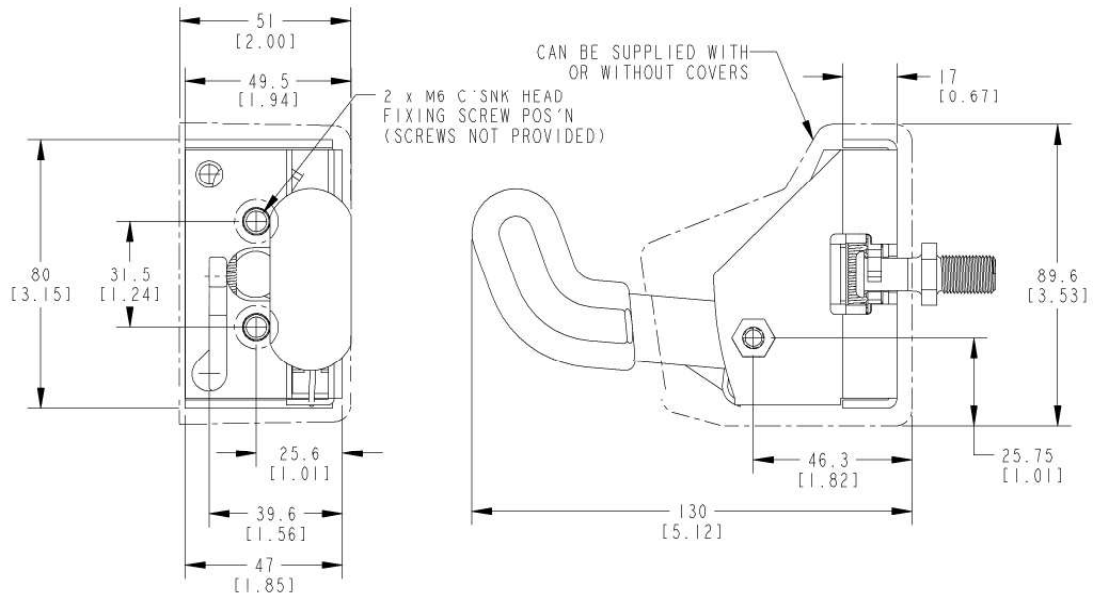
Note that this 050-7100 10mm Single Rotor Latch complies with FMVSS 206 (ECE R11) when tested with supplied bracket and accordance with SAE J839 and that this product meets FMVSS 206 (ECE R11) load requirements and may be used in FMVSS 206 (ECE R11) applications pending TriMark application approval. Please refer to page 158 for the complete FMVSS 206 (ECE R11) statement.

Caution: Product does not meet the locking requirements for FMVSS 206 (ECE R11).

All dimensions are for reference only. For more information visit www.trimarkcorp.com



050-7100 continued



All dimensions are for reference only. For more information visit www.trimarkcorp.com

050-7120 10mm Single Rotor Latch with Handrail

The compact 050-7120 10mm Single Rotor Latch with Handrail is designed for operator and compartment door applications for off-highway vehicles that require a remote interior release. The latch is incorporated into a rectangular tube for support for the opening and closing function of the door and provides for greater ease of operation (ergonomics) over direct releases.

- Light to medium duty doors up to 45 Kg (100 lbs.) with door seal pressures no greater than 11 Kg (25 lbs.)

FEATURES/BENEFITS:

- Compact size and shape; requires minimum use of door space
- Two position rotary function suitable for personnel doors for FMVSS 206 (ECE R11) applications
- Standard black finish reduces the need for secondary painting
- Supplied with latch plastic cover
- Robust designed remote inside release is incorporated into rectangular tubing which gives additional door structure support and assistance for the opening and closing functions of the door
- Provides for greater ease of operation
- Inside release can be positioned at two points along the tube for convenient location to suit the door/cab design
- Inside release is connected by rods, cables or direct operation to the latch

AVAILABLE:

- Versions are available to allow direct or remote actuation from exterior push button or flap handles
- With left and right variants; provides application flexibility (right hand shown)
- Tube is variable in length and angled to suit customer requirements providing flexibility in the product application



MATERIAL/FINISH:

- Inside release components: Nylon, zinc casting
- Black plated steel case halves
- Cam and catch: Heat treated steel
- Springs: Non-corrosive stainless steel
- Tubing: Black painted steel
- Tube mounting end: Reinforced nylon

INSTALLATION:

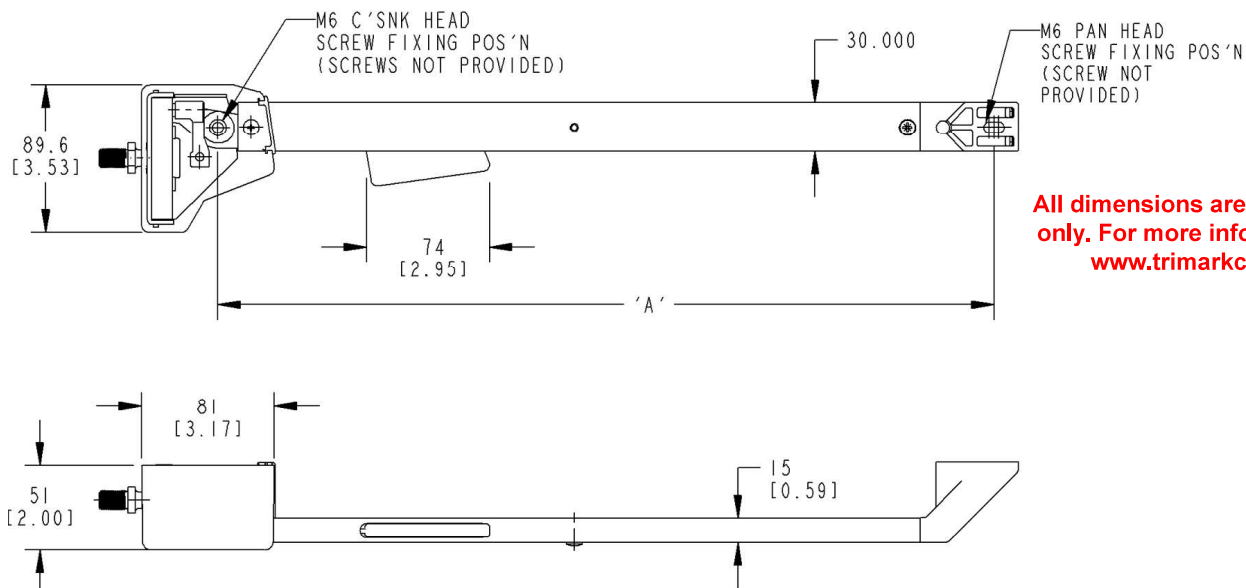
- Easy to install - recommended mounting fastener (2) M6 x 1.0 flat or oval head class 8.8 or better fasteners are required for FMVSS 206 (ECE R11) (not included) plus (1) M6 fastener on handrail end
- Tighten to the fasteners recommended torque value, however, do not exceed 6 to 8 N-m (53 to 70 in-lbs.)
- Latch mounting plate is required to meet FMVSS 206 (ECE R11) loads

USE WITH:

- Latch Mounting Plate (included)
- 070-7100 10mm Striker Pin

Note that this 050-7120 10mm Single Rotor Latch with Handrail complies with FMVSS 206 (ECE R11) when tested with supplied bracket and accordance with SAE J839 and that this product meets FMVSS 206 (ECE R11) load requirements and may be used in FMVSS 206 (ECE R11) applications pending TriMark application approval. Please refer to page 158 for the complete FMVSS 206 (ECE R11) statement.

Caution: Product does not meet the locking requirements for FMVSS 206 (ECE R11).



All dimensions are for reference only. For more information visit www.trimarkcorp.com

050-7130 10mm Single Rotor Latch with Squeeze Release

The compact 050-7130 10mm Single Rotor Latch with Squeeze Release is designed for operator door applications for off-highway vehicles that require a remote interior release. Similar to the 050-7120, this 10mm Single Rotor Latch with Direct Squeeze Release allows inside squeeze release integration into the customers door tubing.

- Light to medium duty doors up to 45 Kg (100 lbs.) with door seal pressures no greater than 11 Kg (25 lbs.)

FEATURES/BENEFITS:

- Compact size and shape; requires minimum use of door space
- Two position rotary function suitable for personnel doors for FMVSS 206 (ECE R11) applications
- Standard black finish reduces the need for secondary painting
- Robust designed remote inside release is able to be incorporated into customers door tubing
- Provides for greater ease of operation

AVAILABLE:

- Versions are available to allow direct or remote actuation from exterior push button or paddle handles
- With left and right variants; provides application flexibility (right hand shown)

MATERIAL/FINISH:

- Inside release components: Nylon
- Black plated steel case halves
- Cam and catch: Heat treated steel



INSTALLATION:

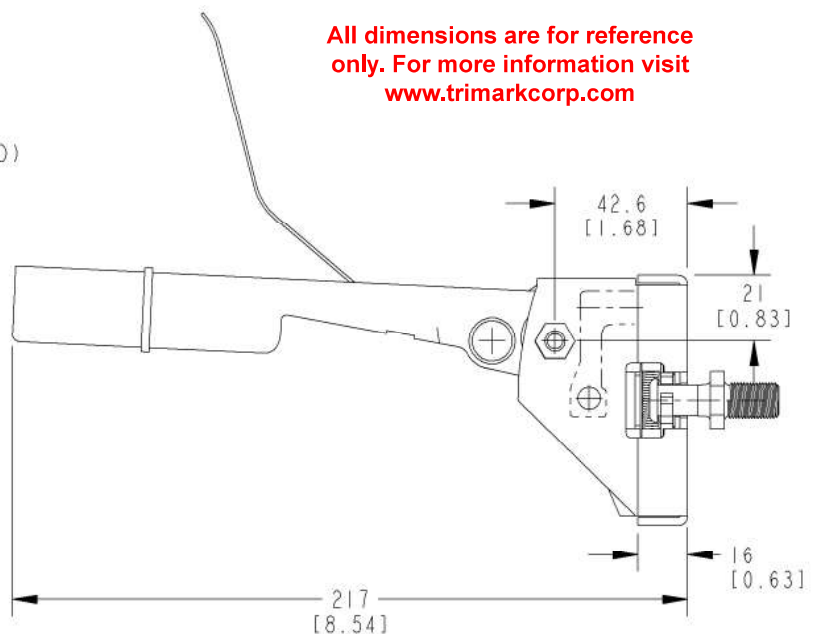
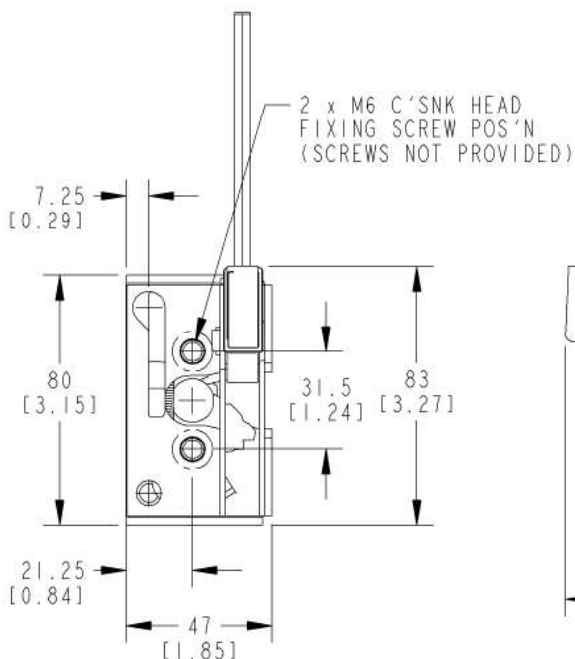
- Easy to install - recommended mounting fastener (2) M6 x 1.0 flat or oval head class 8.8 or better fasteners are required for FMVSS 206 (ECE R11) (not included)
- Tighten to the fasteners recommended torque value, however, do not exceed 6 to 8 N-m (53 to 70 in-lbs.)
- Latch mounting plate supplied, is required to meet FMVSS 206 (ECE R11) loads

USE WITH:

- Latch Mounting Plate (included)
- 070-7100 10mm Striker Pin

Note that this 050-7130 10mm Single Rotor Latch Squeeze Release complies with FMVSS 206 (ECE R11) when tested with supplied mounting bracket and accordance with SAE J839 and that this product meets FMVSS 206 (ECE R11) load requirements and may be used in FMVSS 206 (ECE R11) applications pending TriMark application approval. Please refer to page 158 for the complete FMVSS 206 (ECE R11) statement.

Caution: Product does not meet the locking requirements for FMVSS 206 (ECE R11).



050-7140 10mm Single Rotor Latch with Cable Release

The compact 050-7140 10mm Single Rotor Latch with Cable Release is designed for operator applications for off-highway vehicles that require a remote interior release. Similar to the 050-7120, this 10mm Single Rotor Latch with Cable Release allows inside squeeze release integration into the customers door tubing.

- Light to medium duty doors up to 45 Kg (100 lbs.) with door seal pressures no greater than 11 Kg (25 lbs.)

FEATURES/BENEFITS:

- Compact size and shape; requires minimum use of door space
- Two position rotary function suitable for personnel doors for FMVSS 206 and (ECE R11) applications
- Standard black finish reduces the need for secondary painting
- Supplied with latch plastic cover
- Provides for greater ease of operation (ergonomics) and flexibility into customers door tubing

AVAILABLE:

- Versions are available to allow direct or remote actuation from exterior push button or paddle handles
- With left and right variants; provides application flexibility (right hand shown)
- Multiple cable lengths are available providing flexibility in the product application. Custom lengths are available (please inquire)

MATERIAL/FINISH:

- Black plated steel case halves
- Cam and catch: Heat treated steel



INSTALLATION:

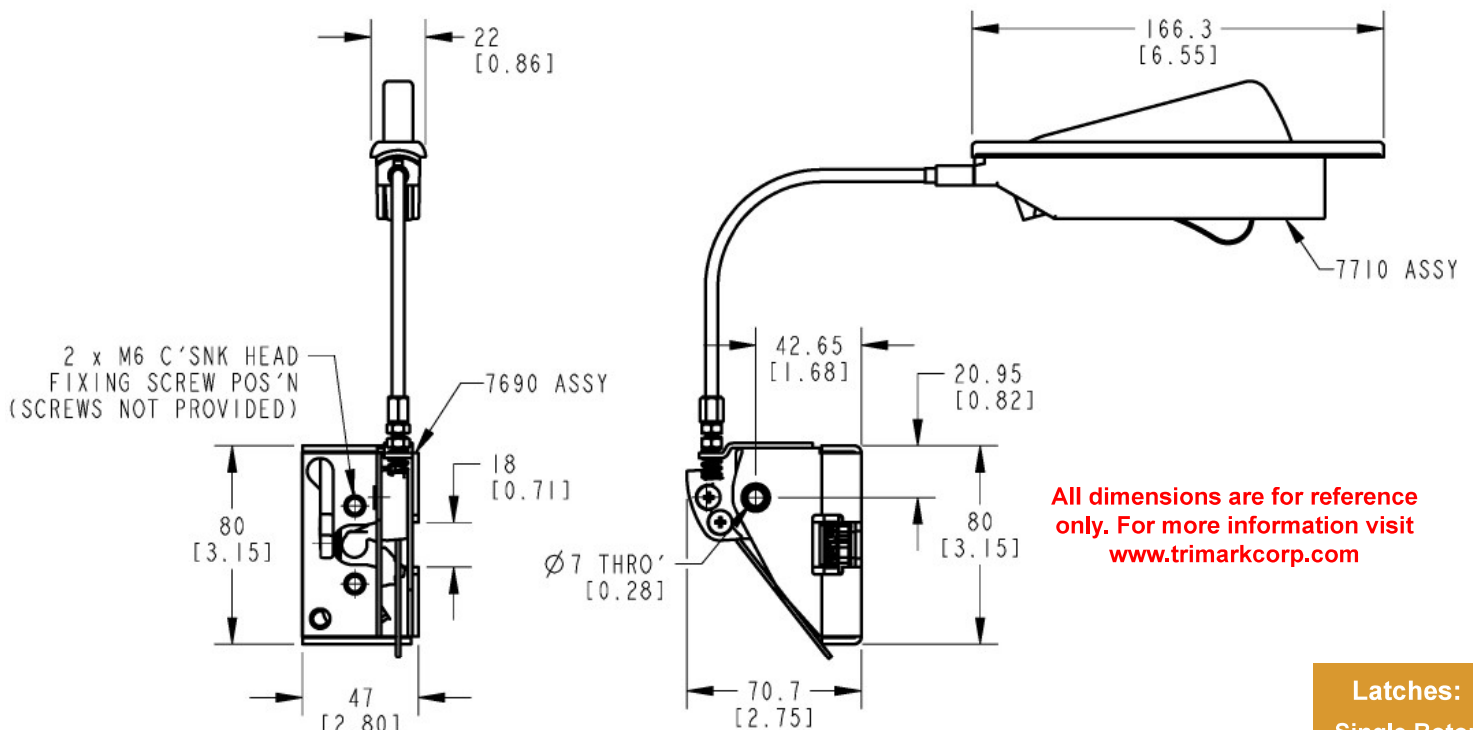
- Easy to install - recommended mounting fastener (2) M6 x 1.0 flat or oval head class 8.8 or better fasteners are required for FMVSS 206 and (ECE R11) (not included)
- Tighten to the fasteners recommended torque value, however, do not exceed 6 to 8 N-m (53 to 70 in-lbs.)
- Latch mounting plate is required to meet FMVSS 206 (ECE R11) loads

USE WITH:

- Latch Mounting Plate (included)
- 070-7100 10mm Striker Pin

Note that this 050-7140 10mm Single Rotor Latch With Cable Release complies with FMVSS 206 (ECE R11) when tested with supplied mounting bracket accordance with SAE J839 and that this product meets FMVSS 206 (ECE R11) load requirements and may be used in FMVSS 206 (ECE R11) applications pending TriMark application approval. Please refer to page 158 for the complete FMVSS 206 (ECE R11) statement.

Caution: Product does not meet the locking requirements for FMVSS 206 (ECE R11).



050-7180 10mm Single Rotor Latch with Finger Release

The compact 050-7180 10mm Single Rotor Latch with Finger Release is designed for compartment door applications for off-highway vehicles that require a simple and compact rotary latch with a finger release.

- Access panels and hoods for light duty doors up to 23 Kg (50 lbs.) with door seal pressures no greater than 7 Kg (15 lbs.)

FEATURES/BENEFITS:

- Compact size and shape; allows maximum use of door space
- Two position rotary function
- Standard black finish reduces the need for secondary painting

AVAILABLE:

- Versions are available to allow application flexibility
- With and without direct release inside levers
- With left and right variants; provides application flexibility (right hand shown)

MATERIAL/FINISH:

- Black plated steel case halves
- Cam and finger release: Heat treated steel



INSTALLATION:

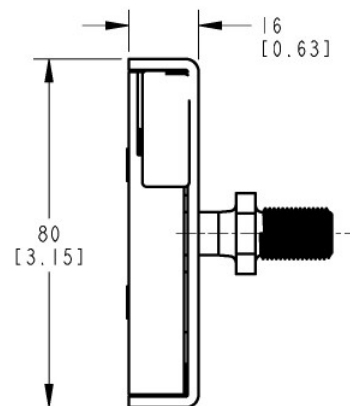
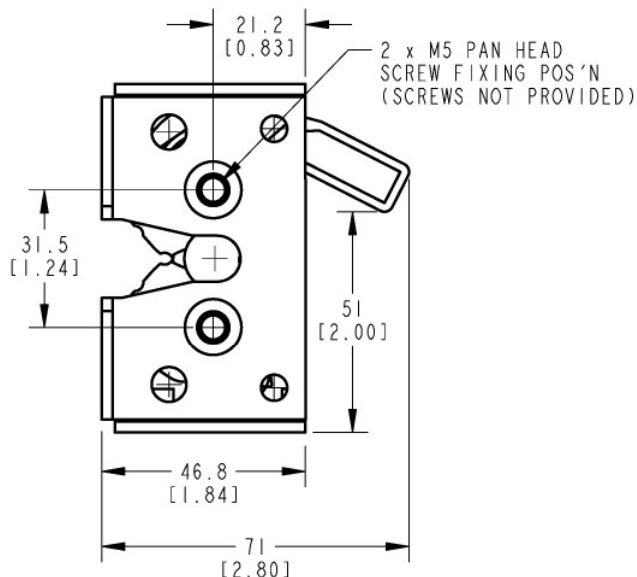
- Easy to install - recommended mounting fastener (2) M6 x 1.0 flat or oval head fasteners are required (not included)

USE WITH:

- 070-7100 10mm Striker Pin

Caution: Latch does not meet FMVSS 206 (ECE R11) load requirements.

All dimensions are for reference only. For more information visit www.trimarkcorp.com



050-7200 10mm Single Rotor Latch with Dual Trip Levers

The compact 050-7200 10mm Single Rotor Latch with Dual Release Levers is designed for operator and compartment door applications for off-highway vehicles. Offering a direct push button handle release with remote cable or rod actuated inside release providing expanded application flexibility

- Light to medium duty doors up to 45 Kg (100 lbs.) with door seal pressures no greater than 20 Kg (44 lbs.)

FEATURES/BENEFITS:

- Compact size and shape; requires minimum use of door space
- Standard black finish reduces the need for secondary painting
- Two position rotary function

AVAILABLE:

- Versions are available to allow direct or remote actuation from exterior push button or paddle handles
- With left and right variants; provides application flexibility (right hand shown)

All dimensions are for reference only. For more information visit www.trimarkcorp.com



MATERIAL/FINISH:

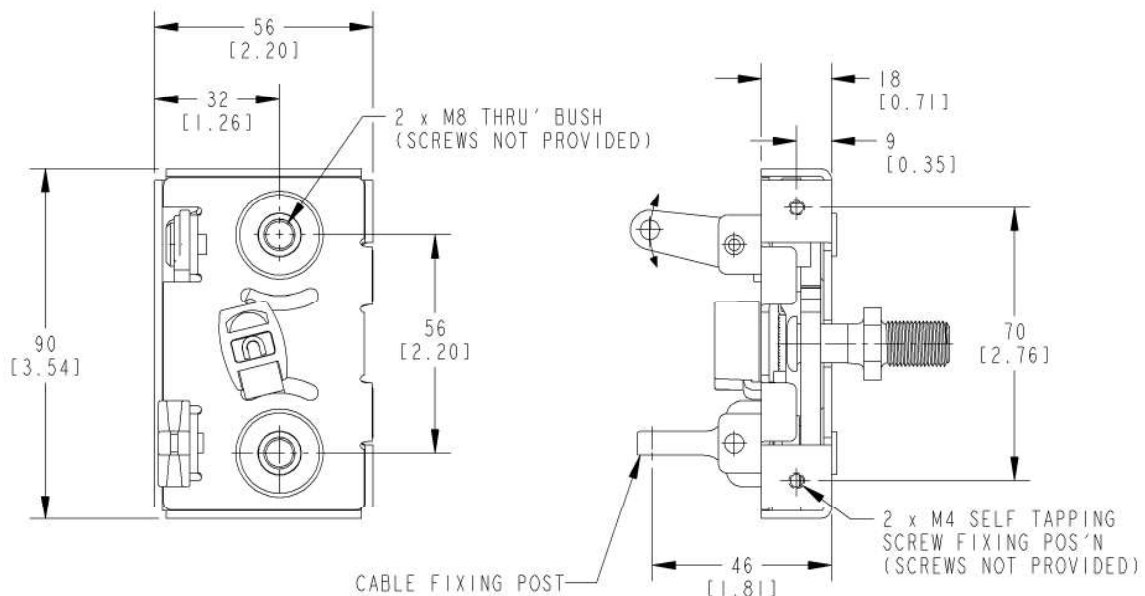
- Black plated steel case halves
- Cam and catch: Heat treated steel

INSTALLATION:

- Easy to install - recommended mounting fastener (2) M8 x 1.25 flat or oval head fasteners are required (not included)

USE WITH:

- 070-7100 10mm Striker Pin



060-0500 Plunger Bolt

This plunger bolt was designed for small compartment and access doors where low cost slam action latching is desired. It features a plastic plunger bolt for ease of closing/opening and is available with rod collars and a direct release knob for installation and ease of use.



FEATURES/BENEFITS:

- Unique, economical, single piece cover design
- .625" (15.87mm) allowable travel
- Low operating efforts
- Corrosion resistant
- Slotted mounted holes for ease of installation
- Precision placed mounting holes allow pre-drilling of holes in mating parts
- Optional inside release feature
- Non-metallic plunger bolt for low operating efforts
- Optional collar and setscrew for easy rod attachment and adjustment

FINISH:

- Cover and link: Zinc plated with clear chromate conversion coating
- Collar: Clear chromate dip

MATERIAL:

- Cover and link: Cold rolled steel
- Plunger bolt: Black nylon
- Collar: Zinc die cast alloy

INSTALLATION:

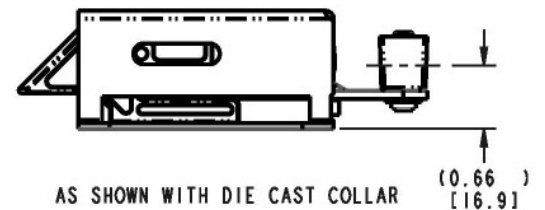
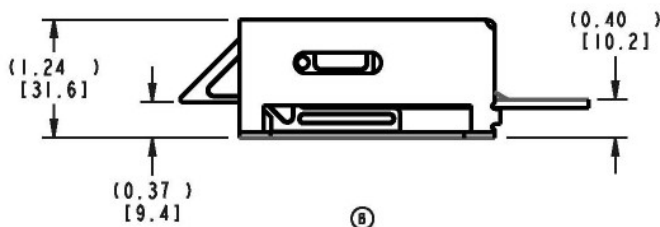
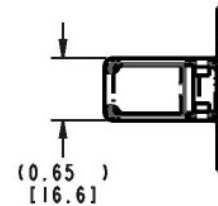
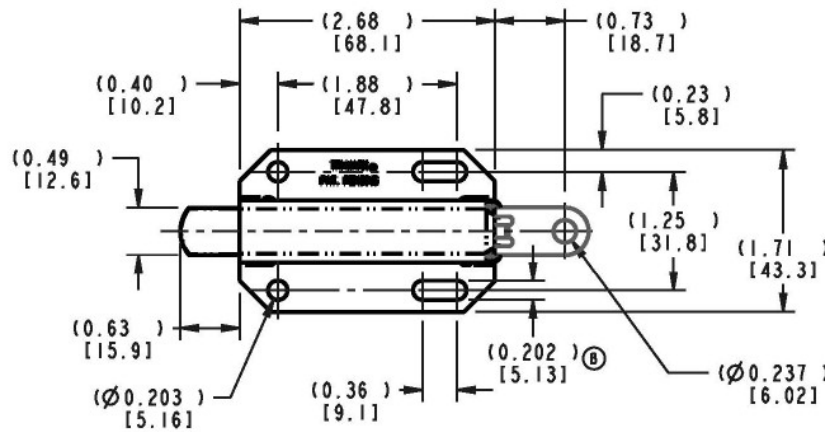
- Recommended use of #10-24 or #10-32 type D, F, G or T thread cutting, self-threading screws (not included)

AVAILABLE:

- With or without collar and setscrew as shown below (please inquire)
- Operated with cables or rods
- Custom rods up to .219" diameter (5.4mm)
- Optional plunger nose configurations available (requires tooling)

Note: Rod collars are not intended or recommended for use in applications that require FMVSS 206 (ECE R11) compliance or applications that have heavy or extreme striker bolt loads (> 25 lbs. / 11 kg) and/or high to extreme usage (> 100,000 door cycles/life).

All dimensions are for reference only. For more information visit www.trimarkcorp.com



060-0900 Recessed Mount Plunger Bolt

This plunger bolt was designed for small compartment and access doors where low cost slam action latching is desired. It features a plastic plunger bolt for ease of closing/opening and a flange mount that allows for internal door mounting (recessed).



FEATURES/BENEFITS:

- .500" (12.7mm) allowable travel
- Low operating efforts
- Corrosion resistant
- Non-metallic plunger bolt for low operating efforts
- Flange mount allows for internal door mounting (recessed)

FINISH:

- Black painted

MATERIAL:

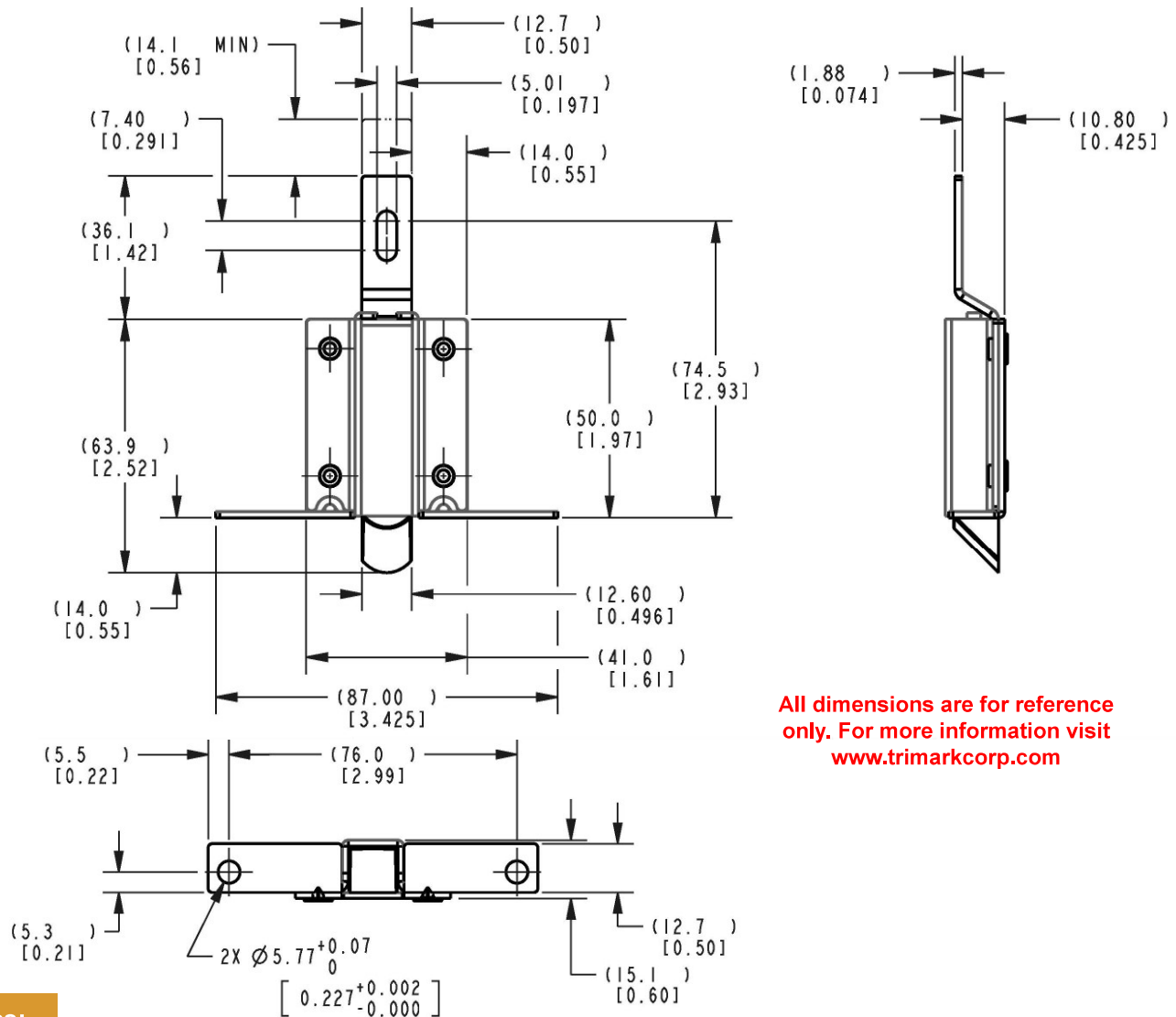
- Base, cover, slide: Cold rolled steel
- Spring: Stainless steel
- Plunger: Nylon

AVAILABLE:

- Custom rods up to .188" diameter (4.5mm)

INSTALLATION:

- Recommended use of (2) 3/16 (4.5mm) diameter pop rivets or #12 type AB, B or BP steel thread forming screws



All dimensions are for reference only. For more information visit www.trimarkcorp.com

Latches:

Sliding Bolt
44

060-0901 Low Profile Plunger Bolt

This plunger bolt was designed for small compartment and access doors where low cost slam action latching is desired. It features a robust steel plunger bolt for durability and a base mount that allows for ease of installation.

- Light duty baggage doors
- Door weights up to 30 lbs. (13.6 kg)
- Door seal load up to 15 lbs. (6.8 kg)

FEATURES/BENEFITS:

- Plunger bolt retraction is independent of link
- 500" (12.7mm) allowable travel
- Low operating efforts
- Corrosion resistant
- Slotted mounting holes for ease of installation

FINISH:

- Cover, link, plunger bolt: Zinc plated with clear chromate conversion coating

MATERIAL:

- Cover and link: Cold rolled steel or 304 stainless steel
- Plunger bolt: Powder metal
- Spring and base plate: Stainless steel

All dimensions are for reference only. For more information visit www.trimarkcorp.com



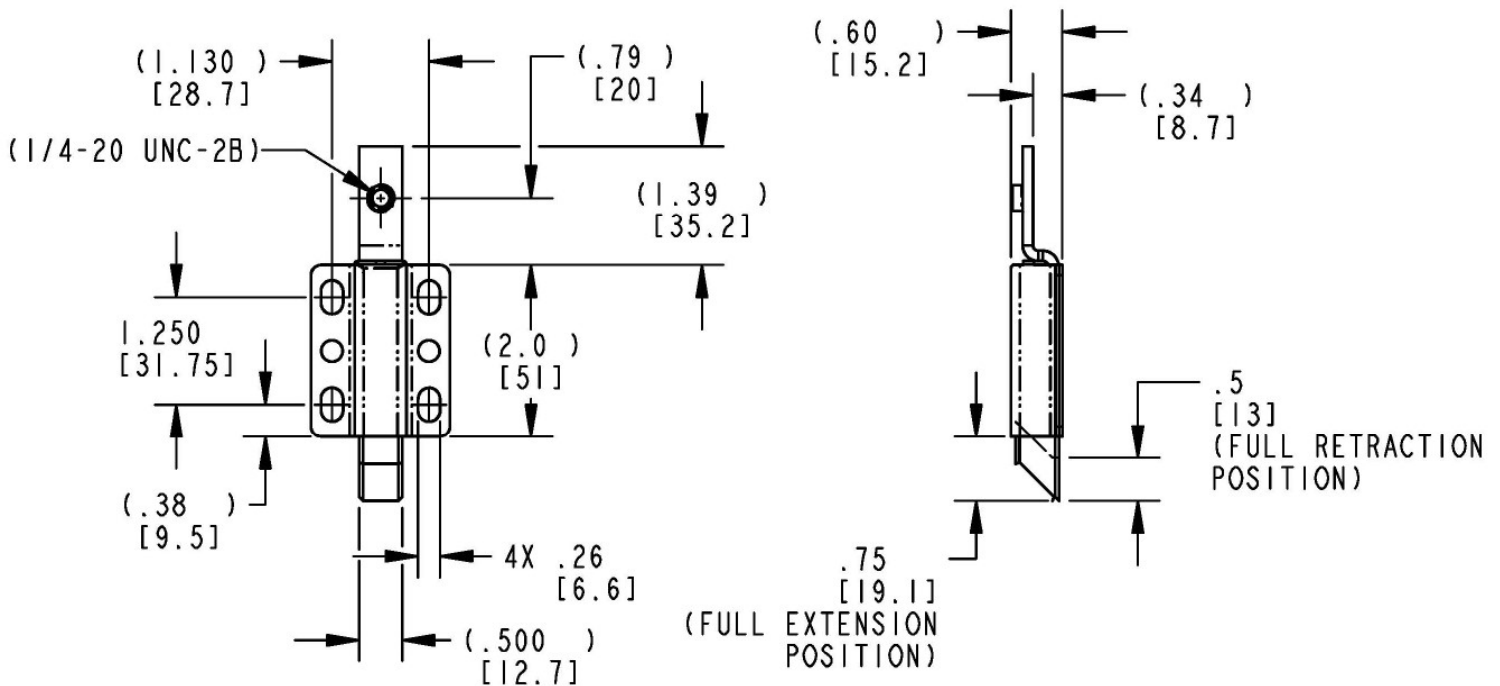
AVAILABLE:

- Reverse plunger for inward swinging doors (please inquire)

INSTALLATION:

- Recommended use of (4) 1/4-20 or M6 type fasteners

Caution: Latch does not meet FMVSS 206 (ECE R11) load requirements.



060-1200 RV Screen Door Latch

This product is designed for securing of screen doors for RV motor homes and travel trailers. It features sturdy die cast zinc construction for years of trouble free use.

FEATURES/BENEFITS:

- Dual function - latch secures the screen door to the exterior door as well as the door jamb
- Allows for one hand operation with positive slam action latching function
- Low profile design will work with a wide variety of doors

AVAILABLE:

- Right hand version
- Door latch and strike are included for a total system solution

INSTALLATION:

- Easy to install with (6) #8 fasteners (included)



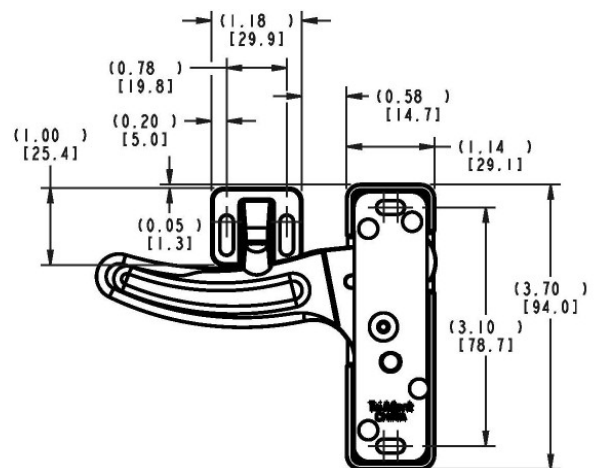
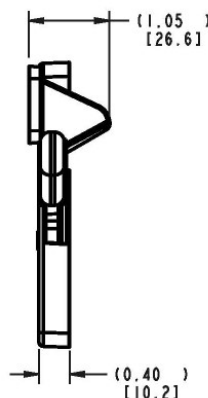
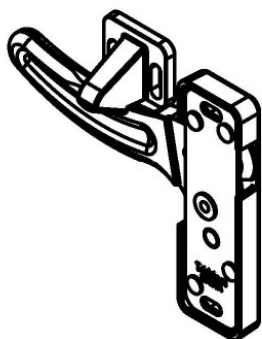
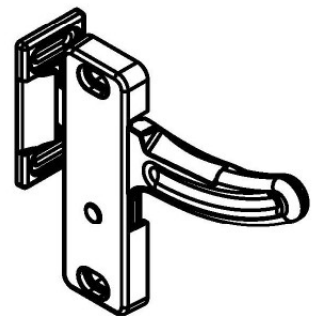
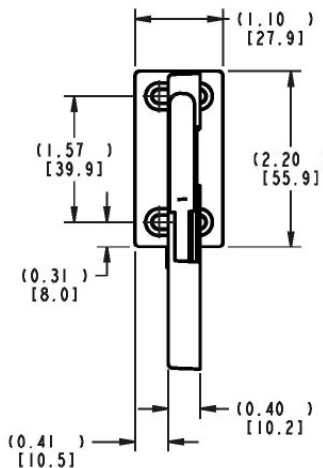
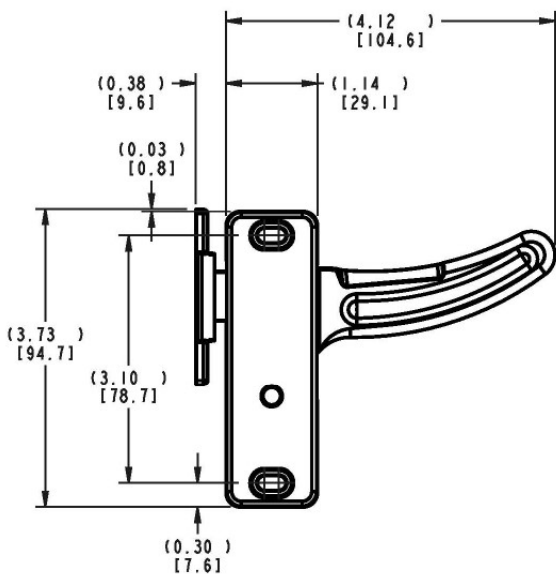
MATERIAL:

- Sturdy die cast zinc alloy
- Non-corrosive stainless steel spring
- Door strike and keeper—engineered plastic

FINISH:

- Black powder coated

All dimensions are for reference only. For more information visit www.trimarkcorp.com



060-7100 Plunger Latch - Low Profile L-Handle

Designed for compartment and access doors where low cost slam action latching with L-handle actuation is desired. It features a robust zinc die cast plunger bolt for durability.

FEATURES/BENEFITS:

- Various handle styles
- Easy to install
- Accommodates door thickness from 25mm to 50mm (1.00-2.00")
- Non-handed

AVAILABLE:

- Several options are available to suit a variety of applications

MATERIAL:

- Sturdy zinc die cast alloy housing and plunger bolt components



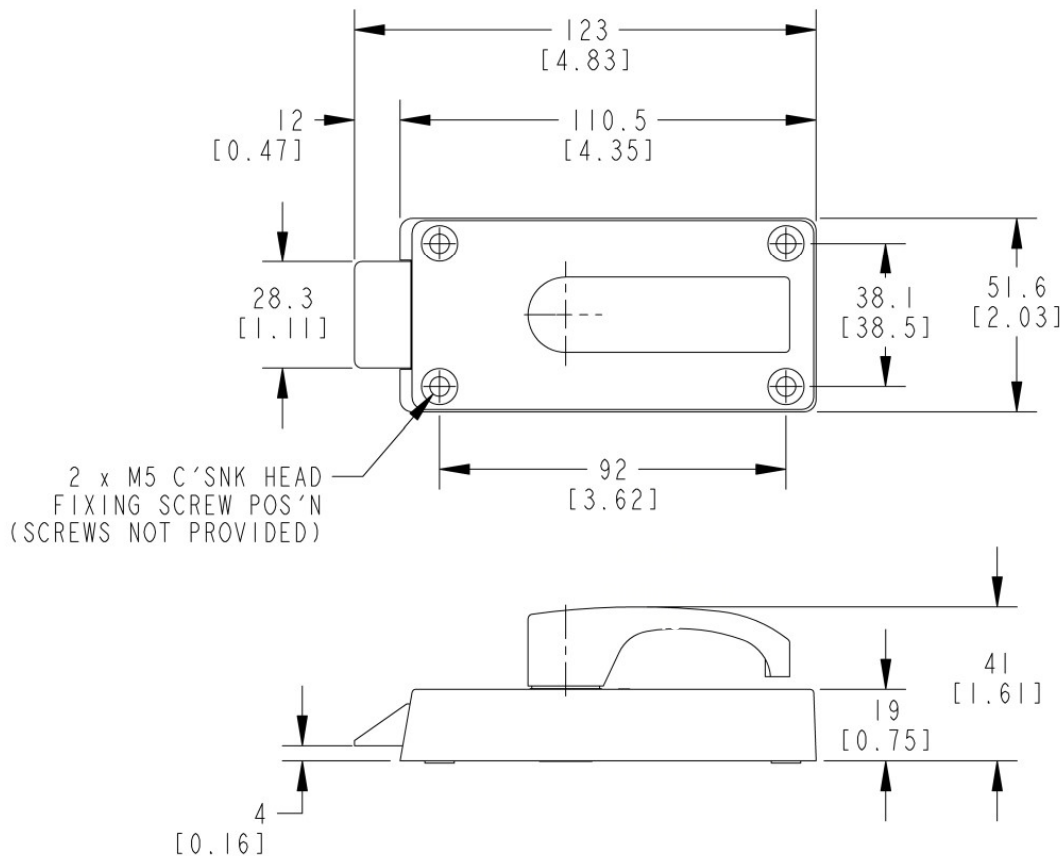
FINISH:

- Standard black or silver powder coated
- Other color options available upon request

INSTALLATION:

- Easy to install, (4) M5 fixing screws available, not to exceed 6 N-m (50 in-lbs.)
- Various base plates available (spacer)

All dimensions are for reference only. For more information visit www.trimarkcorp.com



060-7200 Heavy Duty Plunger Latch - Large L-Handle

Designed for compartment and access doors where low cost slam action latching with L-handle actuation is desired. It features a robust zinc die cast plunger bolt for durability.

FEATURES/BENEFITS:

- Various handle styles
- Easy to install
- Accommodates door thickness from 25mm to 50mm (1.00-2.00")
- Internal Locking

AVAILABLE:

- Several options are available to suit a variety of applications
- Left and right hand variants (handle rotation)

MATERIAL:

- Sturdy zinc die cast alloy housing
- Zinc die cast alloy plunger bolt with steel reinforcement plate



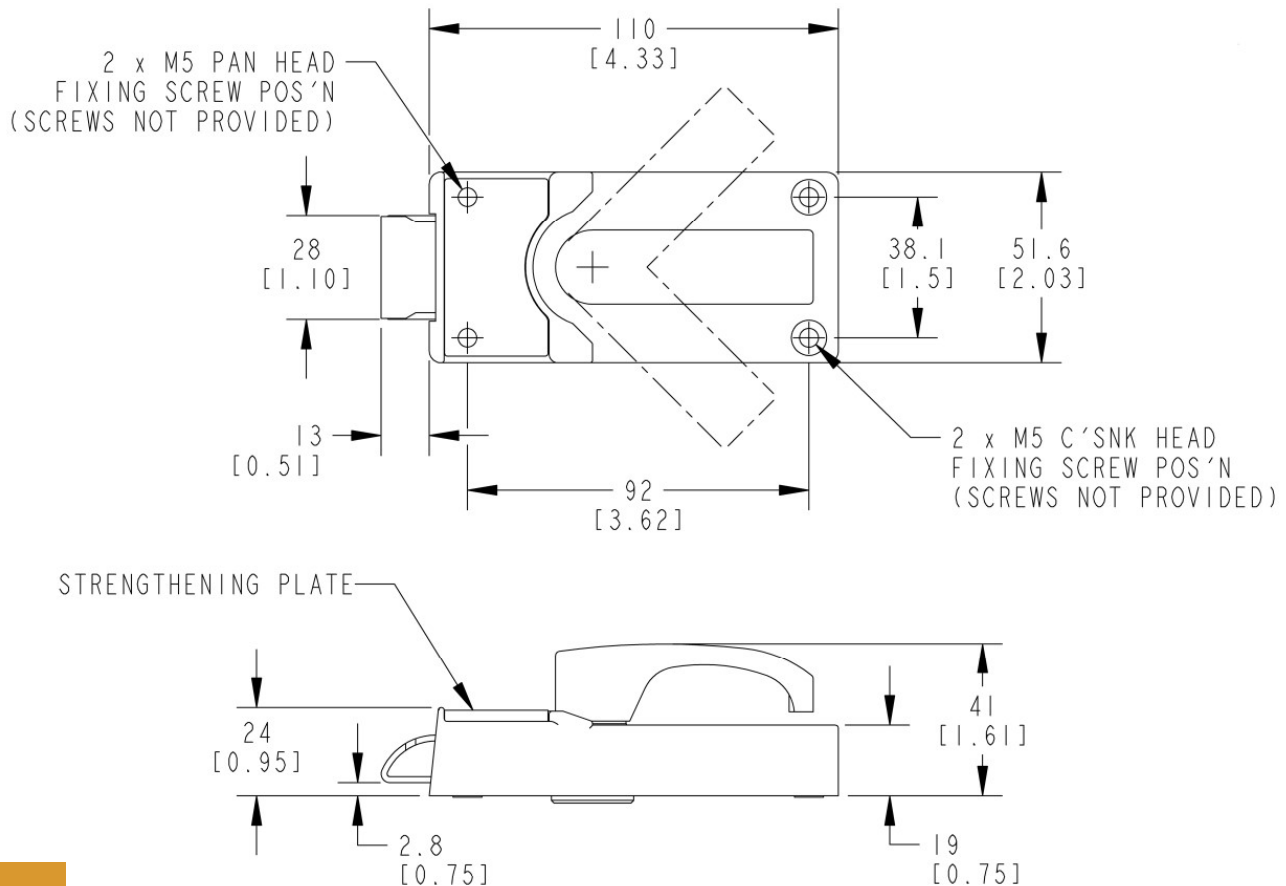
FINISH:

- Standard black or silver powder coated
- Other color options available upon request

INSTALLATION:

- Easy to install, (4) M5 fixing screws available, not to exceed 6 N-m (50 in-lbs.)
- Various base plates available (spacer)

All dimensions are for reference only. For more information visit www.trimarkcorp.com



140-0100 TriGuard Heavy Duty Cam Lock

This heavy duty cam lock module is designed to be located in high stress areas and used as a primary mechanism for securing personnel doors, rear doors, hatches and windows or as a secondary mechanism in conjunction with a primary door latch. Providing additional strength and security, it can be used singularly or in multiples and can be operated and controlled via rods or cables from a central release such as TriMark's 010-1000 Inside Release Handle.

FEATURES/BENEFITS:

- Heavy duty modular construction is received fully assembled and tested
- Integrated detent holds the cam in 90 degree orientations
- Square drive detail allows for interior handle attachment and exterior emergency release

AVAILABLE:

- Clockwise and counter-clockwise rotation to lock (clockwise rotation shown)
- Customization features available
- Please inquire - special cases and mounting details

MATERIAL:

- High strength steel construction
- Heat treated cam and cross shaft

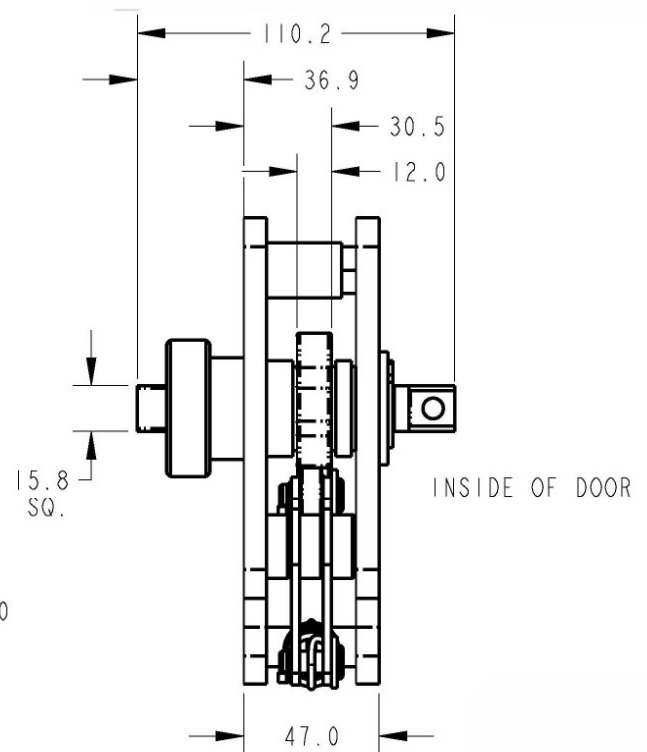
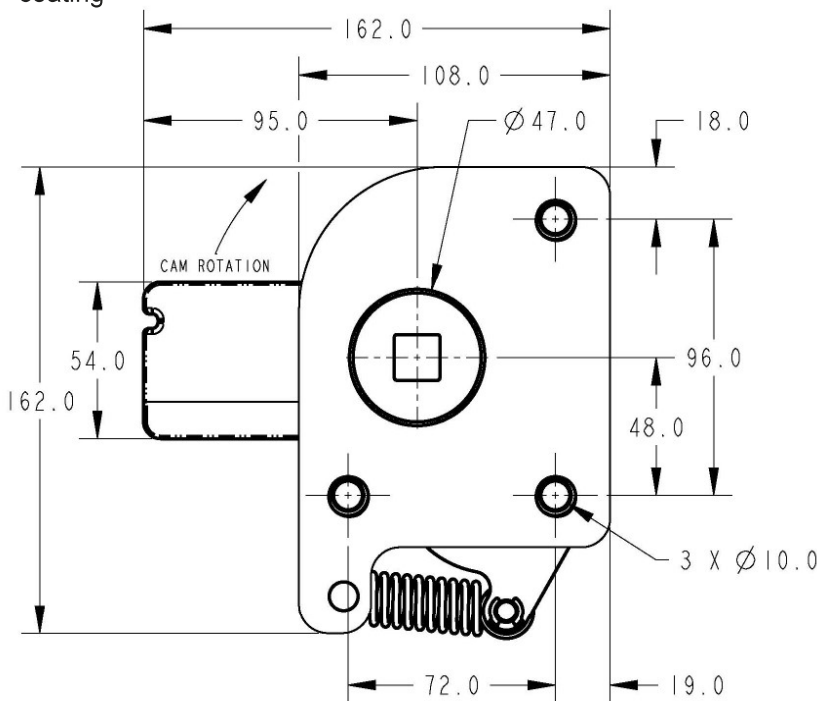
FINISH:

- Zinc plated, clear chromate steel components
- Optional finishes available including: Black Magni coating, Tan/Olive CARC paint and Tan/Olive powder coating



INSTALLATION:

- Easy to install, module mounts with (3) M8 x 1.25 Class 8.8 fasteners
- Tighten to the manufacturers' recommended torque value
- For best results, lock cam to have minimal clearance to the door frame 1.0mm-2.0mm (0.040-0.080")



All dimensions are for reference only. For more information visit www.trimarkcorp.com

Latches:
Deadbolt
49

030-0500 Pivoting Catch Compartment Latch

This latch was specifically designed for storage and compartment doors for off-road vehicles including agricultural and construction equipment and industrial enclosures. It features a pivoting hook latching design and a reverse paddle design that is suited for top hinged doors and resistance to the insertion of foreign objects.

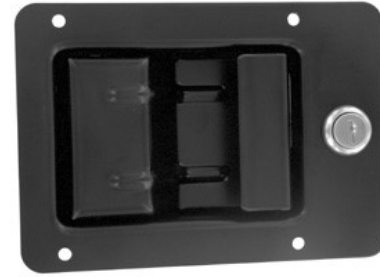
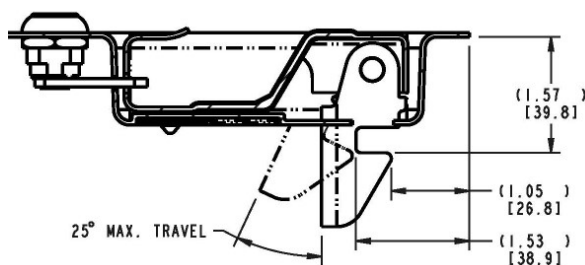
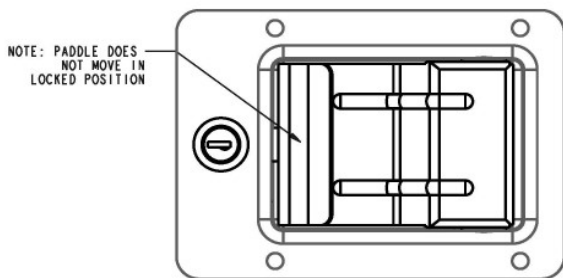
- On or off-highway vehicle applications - construction, mining, agricultural
- Service and utility truck body doors
- Electrical switch and transformer boxes

FEATURES/BENEFITS:

- Pivoting catch allows relative movement between the door and frame when the vehicle frame flexes
- Components are spring loaded internally to minimize effects of vibration
- Reverse paddle design of the compartment latch is suited for top hinged doors and provides resistance to insertion of foreign objects
- Two levels of performance/duty; the heavy duty version (030-0550) provides a higher level of resistance to vibration and wear

AVAILABLE:

- Key locking - keyed alike with most common key codes to match paddle actuators used for operator enclosures
- Non-locking
- Padlockable for increased security
- Optional hole patterns



MATERIAL:

- All steel reinforced construction

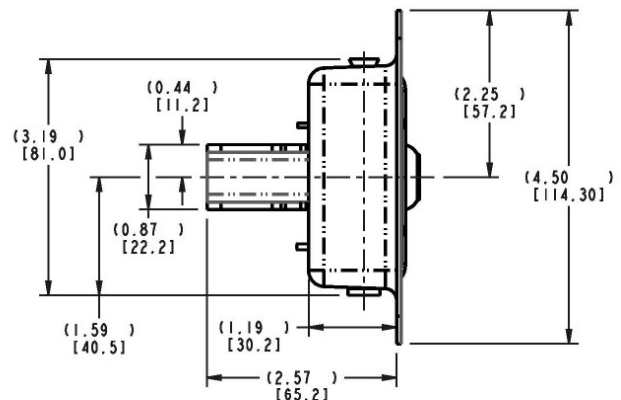
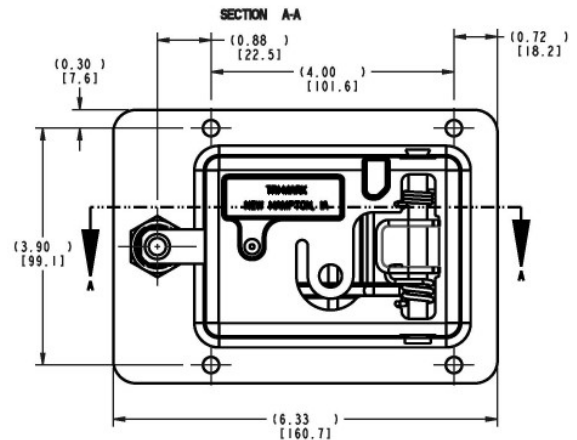
FINISH:

- Zinc plate, clear chromate conversion coat for maximum paint adhesion and resistance to rust
- Black powder coated

INSTALLATION:

- Lock cylinder may be installed after the latch has been assembled into the door and painted
- (4) 3/16" M4 diameter steel "pop" rivets or 1/4-20 or M6 screws (not included)

Caution: Latch does not meet FMVSS 206 (ECE R11) load requirements.

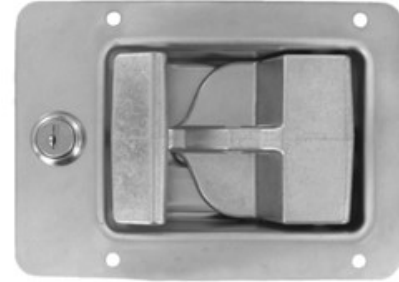


030-0550 Heavy Duty Pivoting Catch Compartment Latch

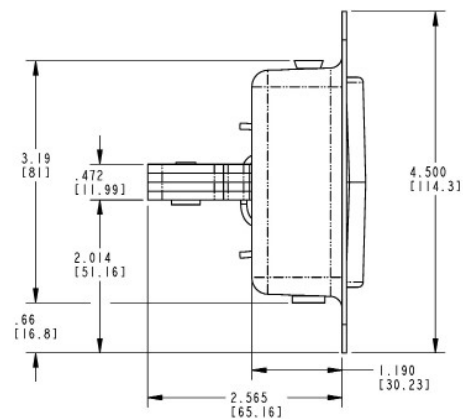
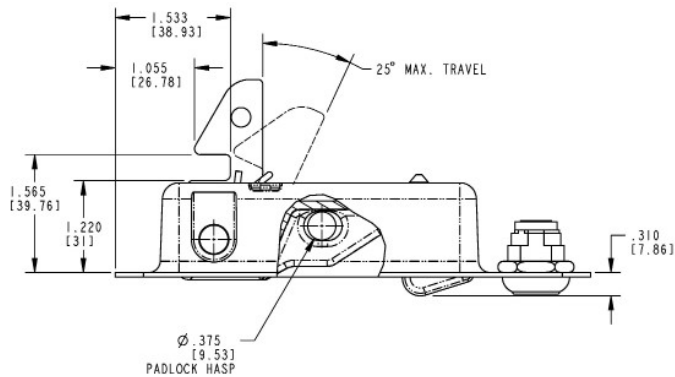
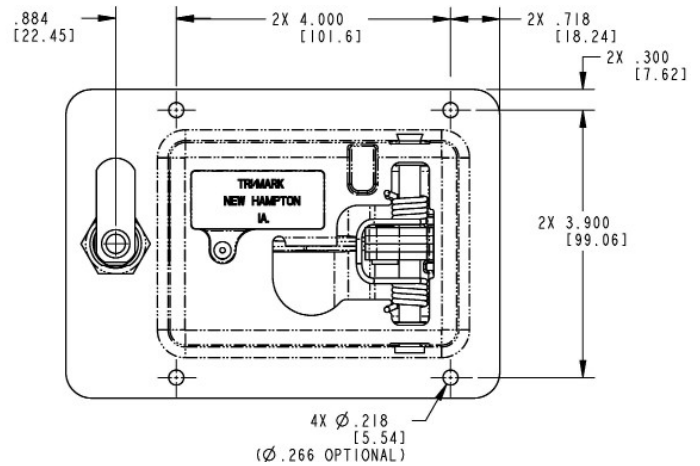
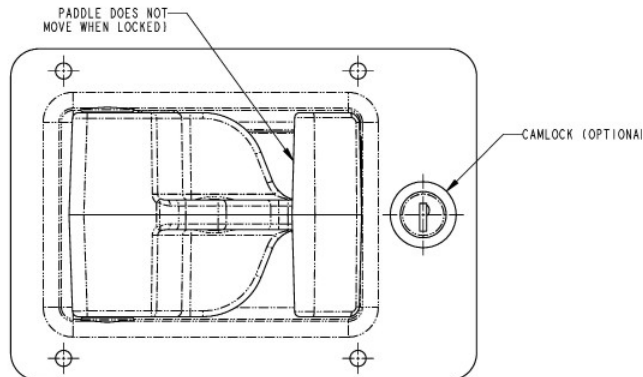
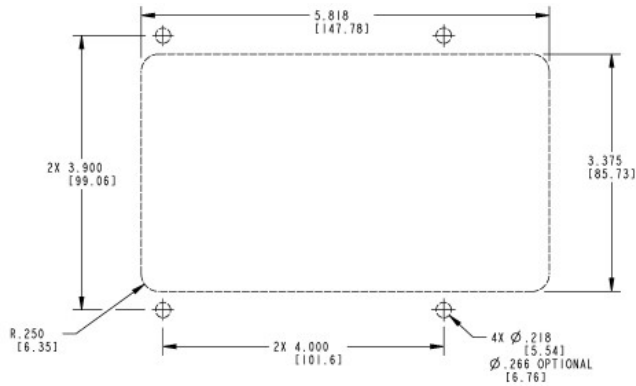
030-0550 FEATURES:

- The high strength steel laminated hook resists wear and increases strength
- Heavy duty zinc die-cast paddle resists deformation
- Retrofits the same cutout as the 030-0500 Pivoting Catch Compartment Latch

Caution: Latch does not meet FMVSS 206 (ECE R11) load requirements.



All dimensions are for reference only. For more information visit www.trimarkcorp.com



050-1300 Plastic Slam Latch

TriMark's 050-1300 Plastic Slam Latch is designed to secure a variety of storage, compartment and access doors. The robust construction and compact size at a very cost effective price makes it a great choice for light duty compartment door and access panel applications.



FEATURES/BENEFITS:

- Slam action latch is non-handed
- Small size will work in a variety of small compartments and applications
- Simple, cost-effective latch offers an alternative to standard rotary latches
- Operation - dual plungers allow the rod to enter into the latch as normal slam action, then the rods must be retracted to allow for the release
- Reduced operating efforts under load
- Reduced operating noise and rattle when compared to zinc/steel products
- Engineered plastic withstands corrosion and has a lower coefficient of friction, reducing closing and operating efforts
- Striker diameter - .375" (9.5mm)

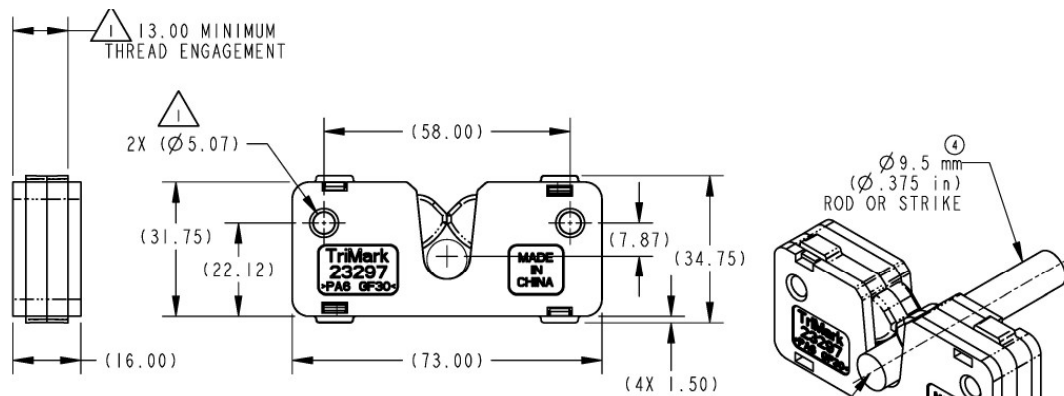
INSTALLATION:

- Easy to install with (2) M6 thread forming fasteners (available - not included)

MATERIAL:

- Engineered injection molded plastic
- Non-corrosive stainless steel springs
- Internal cold rolled stamped steel reinforcement plate (zinc plated, clear chromate)

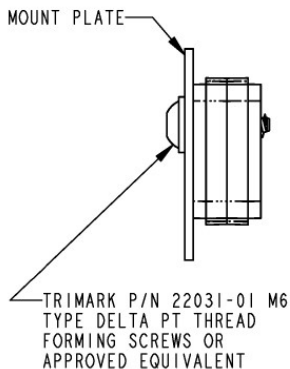
Caution: Latch does not meet FMVSS 206 (ECE R11) load requirements.



NOTES: UNLESS OTHERWISE SPECIFIED

3 1 RECOMMEND MOUNTING WITH TRIMARK PART NUMBER 22031-01 (M6 TYPE DELTA POINT THREAD FORMING SCREWS) WITH 13.00 MM MINIMUM THREAD ENGAGEMENT. MOUNTING TORQUE NOT TO EXCEED 7.5 Nm (66 IN-LBF).

2. CAUTION: CASE HALF SEPARATION MAY OCCUR WHEN THREADING A SCREW INTO THE LATCH IF THE OPPOSITE SIDE CASE HALF IS NOT HELD RIGID.



MOUNTING OPTION

All dimensions are for reference only. For more information visit www.trimarkcorp.com

080-0200 Lever Style Compression Latch

This product is designed for light to medium duty compartment doors, access panels and hoods for off-highway vehicle applications. This heavy duty lever action fixed grip compression latch offers a long lever handle for increased door closing leverage, simplicity of operation and comfortable grip.

FEATURES/BENEFITS:

- Double cam design works with strikers up to 10mm in diameter providing a high level of resistance to vibration and wear
- Over-center action prevent accidental opening due to shock or vibration
- 4mm compression dampens vibration and helps reduce noise and rattle
- Stylish handle cover provides a comfortable grip

AVAILABLE:

- Standard padlock hasp
- Key locking provision to add a cam lock for increased security



MATERIAL:

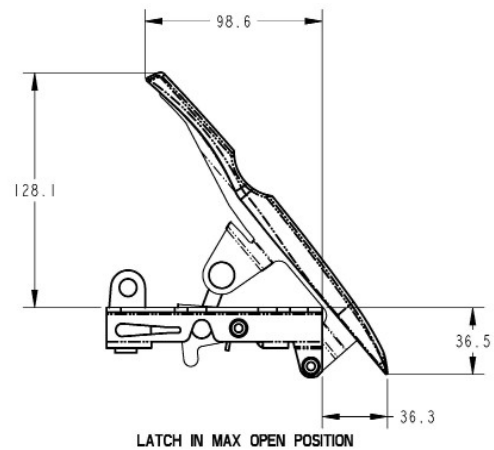
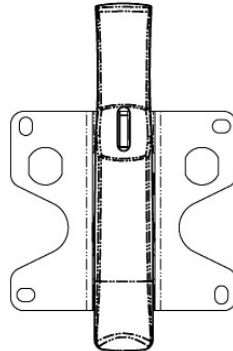
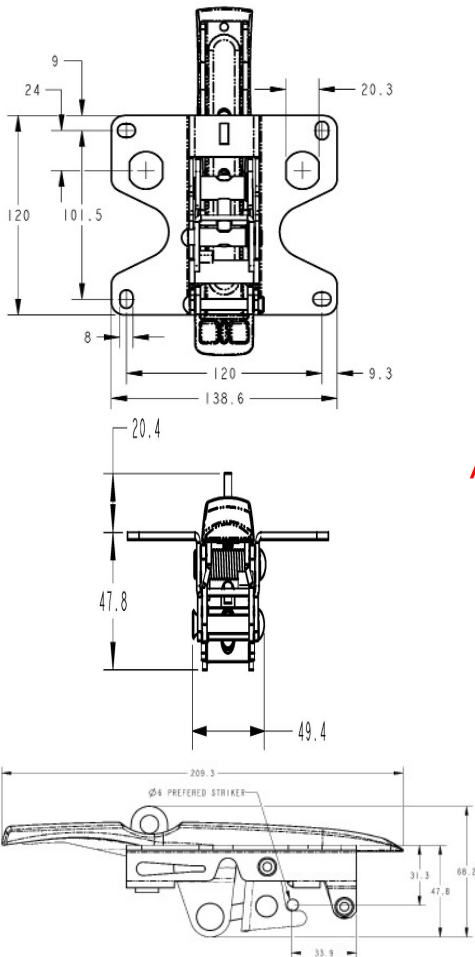
- Robust all steel reinforced construction
- Handle cover: Black engineered plastic
- Springs: Non-corrosive stainless steel

FINISH:

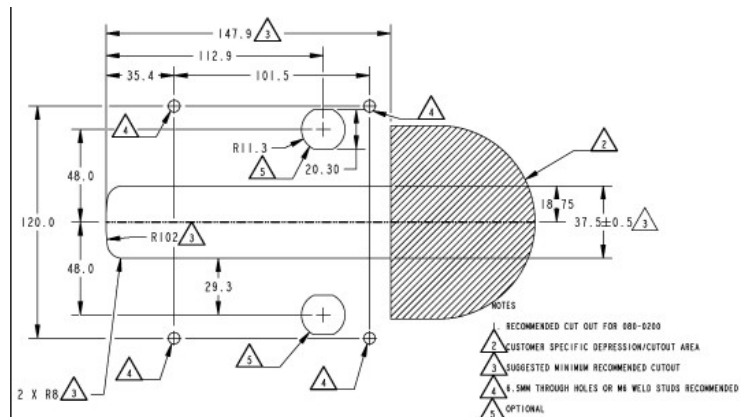
- Zinc plated steel components with black chromate

INSTALLATION:

- (4) M6 or 1/4" fasteners (not included)
- Latch mounts from inside of door panel
- Lock cylinder may be installed after the latch has been assembled into the door



All dimensions are for reference only. For more information visit www.trimarkcorp.com



080-0400 CompOne™ Compression Latch

TriMark's 080-0400 CompOne Compression Lock combines the compactness of a cam lock with smooth and secure pull-in functionality. Featuring 5mm of compression with a 180° turn of the key, this robust lock is intended for gasketed doors, is fully adjustable, water resistant and easy to install.



- Light to medium on or off-highway panel and compartments where door gaskets require a compression lock to pull-in for a firm seal



FEATURES/BENEFITS:

- The KeyOne™ Plus locking system allows the operation of multiple onboard locking hardware with a single key or the option to key differently
- Key-operated compression lock provides 5mm of compression with 180° turn of the key, helps reduce or eliminate noise and rattles caused by vibration.
- Internal and external gasket resists water infiltration through the door
- Cam mounting allows for 8mm (.315") adjustment and cams are rotatable in 45° increments

MATERIAL:

- Sturdy die cast zinc alloy
- Fixing kits: Steel

FINISH:

- Head: Black chromate or chrome plated
- Steel components: Zinc plate and clear chromate conversion coat

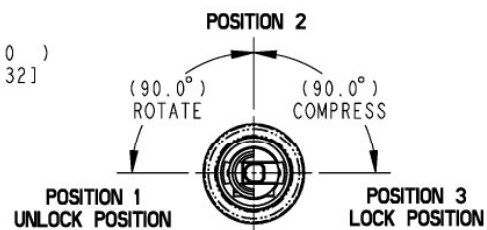
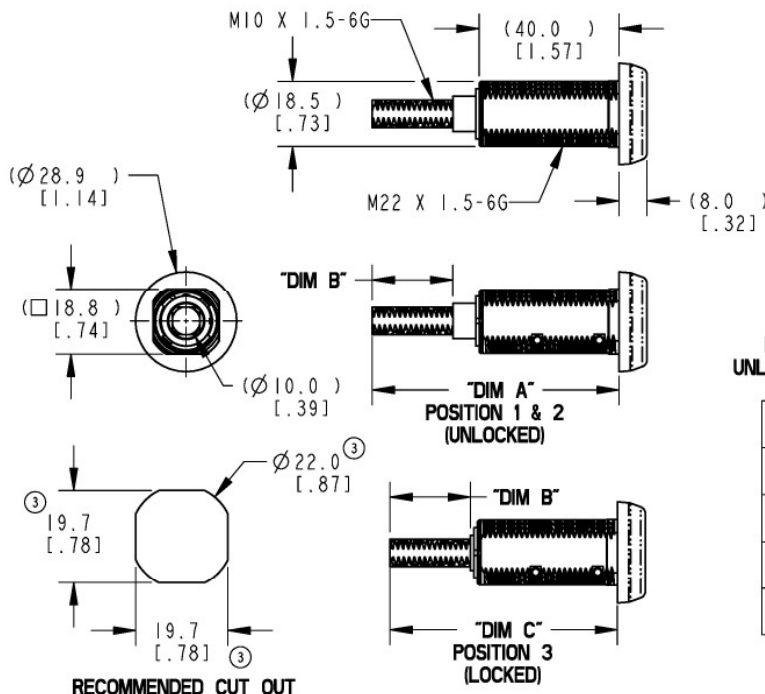
AVAILABLE:

- With various fixing kits consisting of mounting gasket, panel nut, anti-vibration mount washer, (2) cam nuts/ washers and standard cam
- Special cams are available upon request
- Non-locking thumb turn and 7mm square drives are available in sturdy die cast zinc alloy with either low gloss black and chrome finish. Operation is smooth with detent rotation in latched and unlatched positions. Other tool drives are available upon request.

INSTALLATION:

- The product installs easily in a panel with supplied panel nut and vibration washer through a single mounting hole
- Panel thickness range up to 22mm (.866")
- Maximum mounting nut torque 30 N-m (22.1 lbs-ft)

U.S. Patent No. 8,746,022



AVAILABLE SIZES			
	DIM "A"	DIM "B"	DIM "C"
OPTION 1	65.0	23.0	70.5
OPTION 2	60.0	18.0	65.5
OPTION 3	75.0	33.0	80.5

All dimensions are for reference only. For more information visit www.trimarkcorp.com

080-0500 Grapple Style Compression Latch

This grapple style compression latch is designed for compartments, access panels and hoods for off-highway vehicle applications that are subject to high vibration loads. Offering 5mm of compression, the three robust opposing jaws work with a striker diameter of .375" (9.5mm), providing a high level of resistance to vibration, shock and wear.

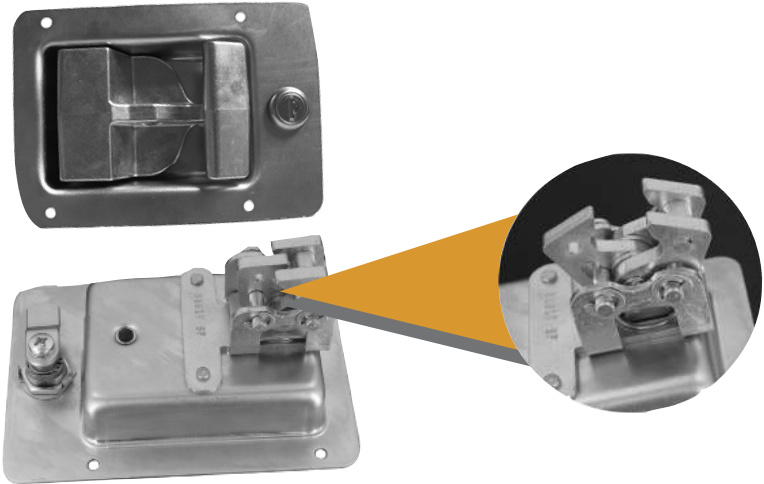
FEATURES/BENEFITS:

- Its use in gasketed applications meets requirements for environmental sealing, noise and airflow management
- Sealed housing provides for minimal intrusion of dirt and water
- Easy to install, the product offers the same look and mounting pattern as the popular 030-0500/030-0550, offering customers a heavy duty product upgrade
- Intuitive open and close actuation does not require a turning operation
- Handle provides over-center action and remains up (flagged) when latch is open providing clear open/closed status

AVAILABLE:

- Locking options include a standard padlock hasp with key locking provision to add a cam lock for increased security or keyed alike to common lock codes to match paddle actuators used for operator enclosures
- Non-locking

All dimensions are for reference only. For more information visit www.trimarkcorp.com



MATERIAL:

- Handle: Sturdy die cast zinc
- Latch and housing: Steel reinforced construction

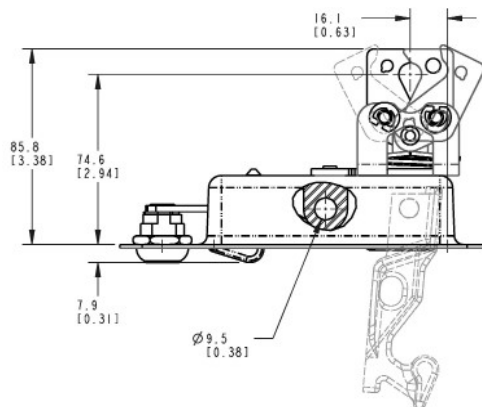
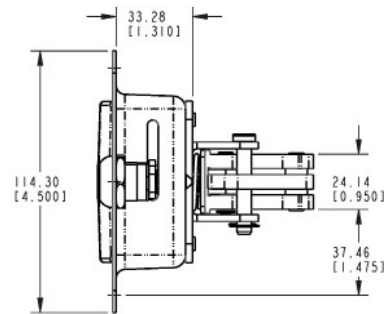
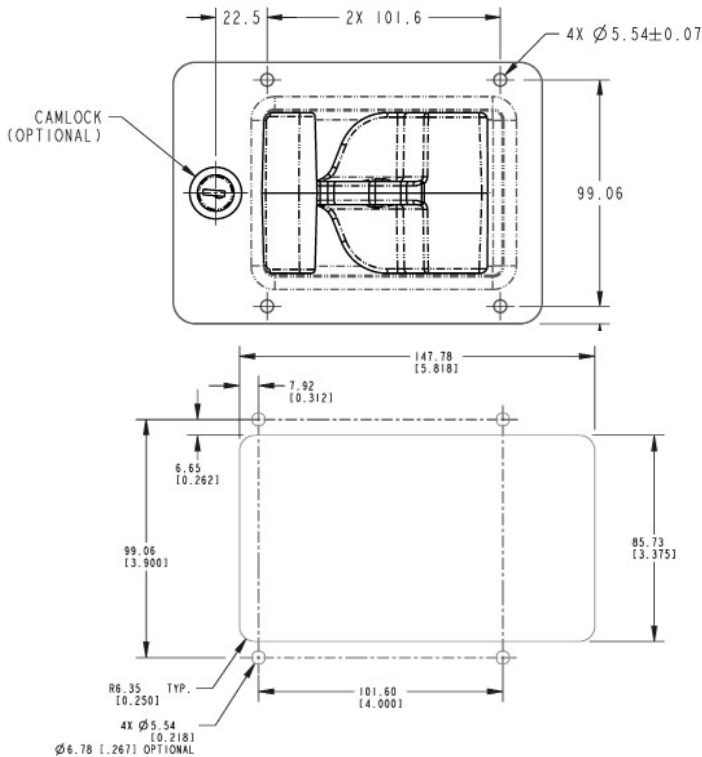
FINISH:

- Zinc plate, clear chromate conversion coat for maximum paint adhesion and resistance to rust
- Black powder coated

INSTALLATION:

- Lock cylinder may be installed after the latch has been assembled into the door and painted
- (4) 3/16" M4 diameter steel "pop" rivets, 1/4-20 or M6 x 1 screws (not included)

U.S. Patent No. 8,770,635



080-0700 Light Duty Compression Hook Latch

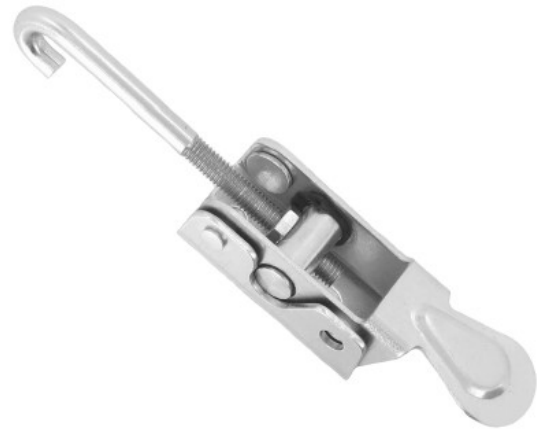
This cost effective, light duty lever operated compression hook latch provides a secure over-center action to keep panels rattle free and secure. Designed for applications where the latch and keeper are surface mounted on the same plane, folding the handle lever down pulls mating in-line panels tight.

DESIGNED FOR:

- Light-duty off-highway panel and compartments where pull-in function and resistance to vibration loads are desired

FEATURES/BENEFITS:

- Easy to operate (ergonomics), folding the handle lever down pulls mating in-line panels tight
- Adjustable hook (20mm range) can engage around a pin (6mm diameter) or into a hole (17mm diameter minimum) in the cover
- Provision to add a small padlock for added security (5mm diameter shackle)
- Universal design is non-handed



MATERIAL:

- Mounting base/lever handle/housing, hook: Mild steel

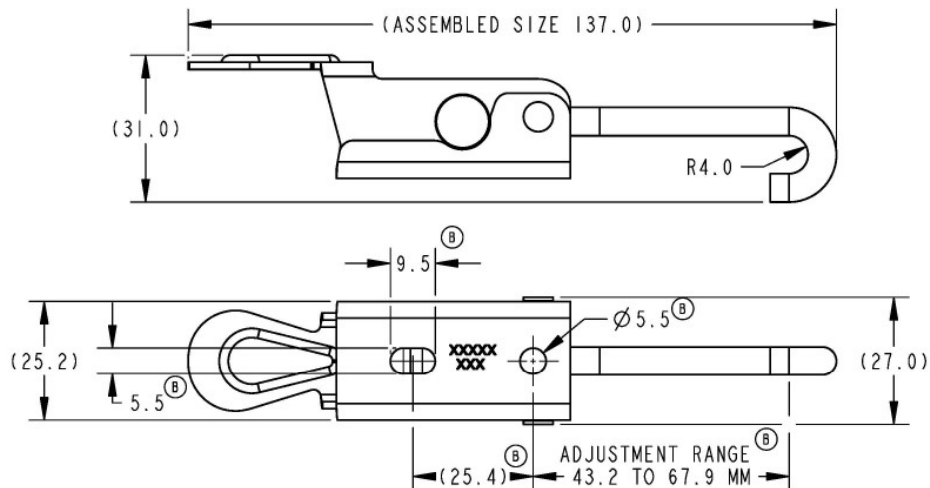
FINISH:

- Zinc plate and clear chromate conversion coat

INSTALLATION:

- Installs easily with (2) M5 #10 mounting fasteners (not included)

All dimensions are for reference only. For more information visit www.trimarkcorp.com



080-7100 Over Center Latch

Designed with no metallic parts for a direct replacement for steel where corrosion may not be acceptable. Locking pin can be replaced with a padlock (not supplied).

FEATURES/BENEFITS:

- Ergonomic function and styling
- Quick release pin or padlock option
- Impact resistant
- Unique non-metallic design reduces weight and provides corrosion resistance over steel counterparts

AVAILABLE:

- With or without keeper (please inquire)

MATERIAL:

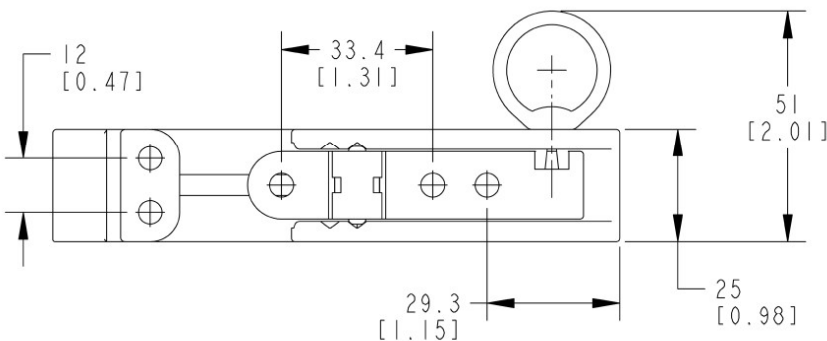
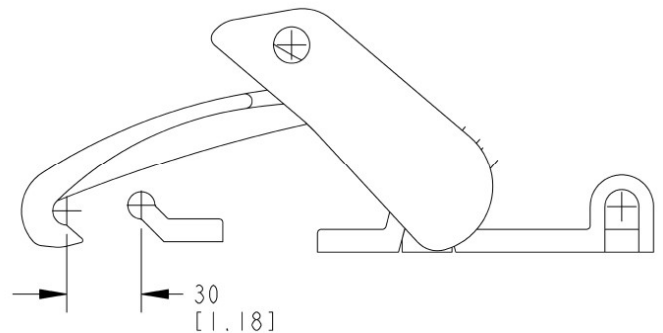
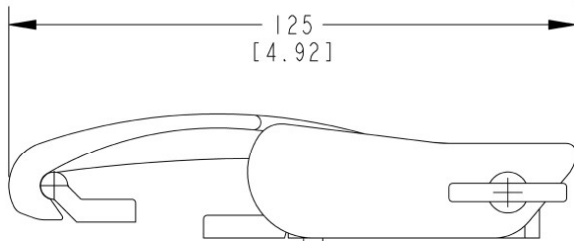
- UV stabilized black nylon

INSTALLATION:

- Easy to install
- (3) M5 CSK screws for body (2) M5 CSK screws for keep (screws not supplied) or alternatively can be riveted



All dimensions are for reference only. For more information visit www.trimarkcorp.com



090-0520 Window Hold-Open

This easy to operate window hold-open is designed for top and side hinged venting windows for on and off-highway vehicles. It features an over center design that orientates the window at fully closed and fully open positions and an optional quick release pin.

- Mushroom window fixings designed for 5mm or 6mm glass thickness
- Non-handed style will work on windows in any orientation
- Easy to install with window fixings (optional)

AVAILABLE:

- With or without quick release pin (please inquire)

INSTALLATION:

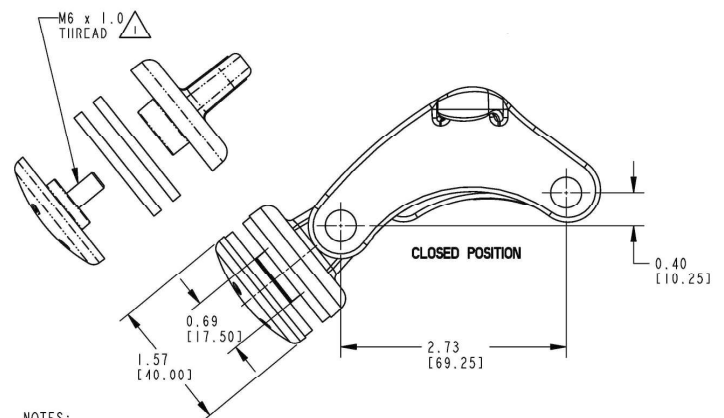
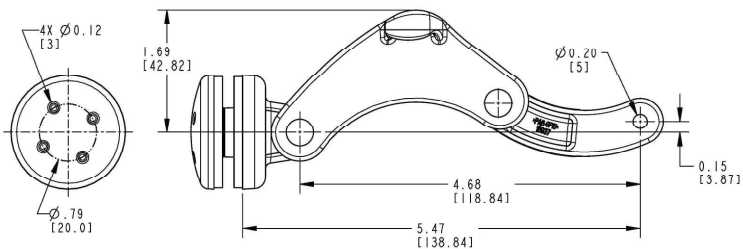
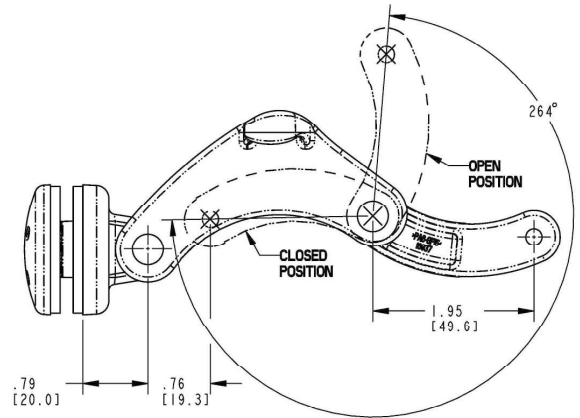
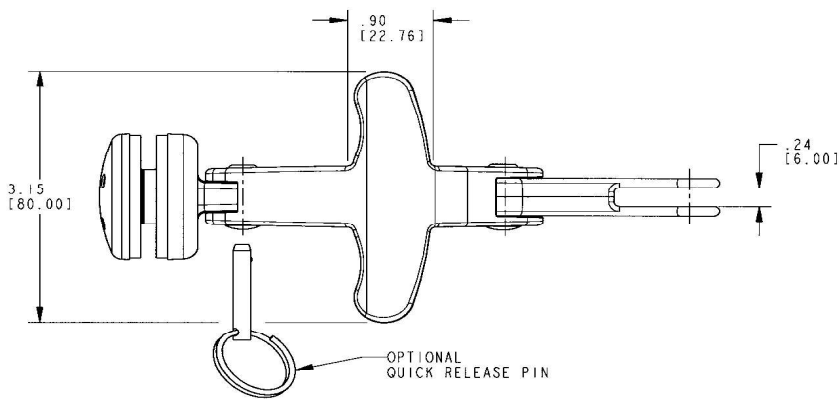
- Installs through 18mm diameter hole

MATERIAL:

- Glass reinforced nylon (black)



090-0520 Window Hold-Open



090-7100 T-Style Over Center Window Stay

This easy to operate window hold-open is designed to fit comfortably in the hand for top and side hinged venting windows for on and off-highway vehicles. It features an over center design that orientates the window at fully closed and fully open positions and an optional quick release pin in bright red nylon or steel.

FEATURES/BENEFITS:

- Mushroom window fixings designed for 5mm or 6mm glass thickness
- Non-handed style will work on windows in any orientation
- Easy to install with window fixings
- Ratchet (optional) allows for various opening positions

AVAILABLE:

- With or without quick release pin (please inquire)
- With mounting gaskets



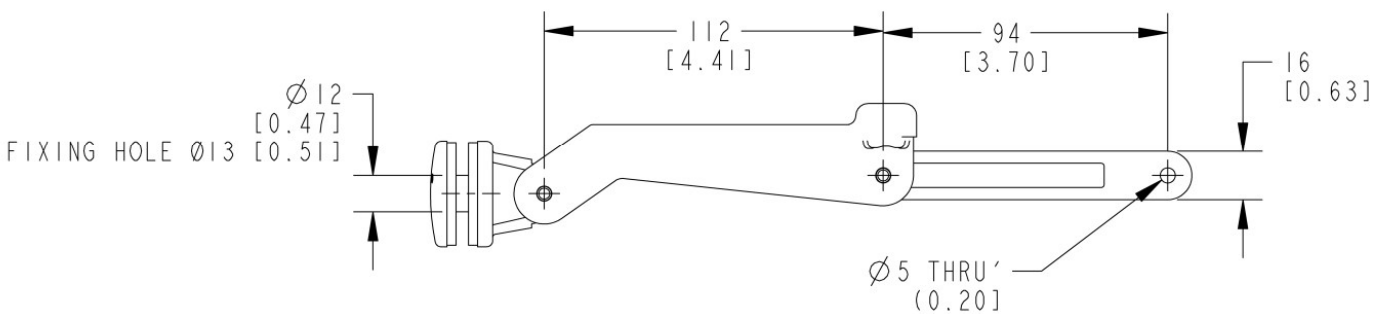
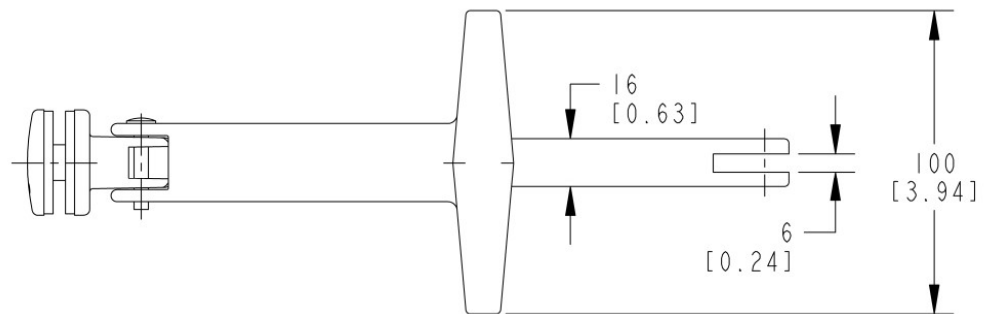
MATERIAL:

- Glass reinforced nylon - black
- Brass threaded insert

INSTALLATION:

- Installs through 13mm diameter hole
- Maximum opening of 220mm
- Mushroom fixing—not to exceed 6 N-m

All dimensions are for reference only. For more information visit www.trimarkcorp.com



090-7110 Compact T-Style Window Hold-Open

This easy to operate compact window hold-open is designed to fit comfortably using a two finger operation for top and side hinged venting windows for on and off-highway vehicles. It features an over center design that orientates the window at fully closed and fully open positions and an optional quick release pin in bright red nylon or steel.

FEATURES/BENEFITS:

- Mushroom window fixings designed for 5mm or 6mm glass thickness
- Non-handed style will work on windows in any orientation
- Easy to install with window fixings (optional)
- Ratchet, allows for various opening positions

AVAILABLE:

- With or without quick release pin (please inquire)
- With mounting gaskets

MATERIAL:

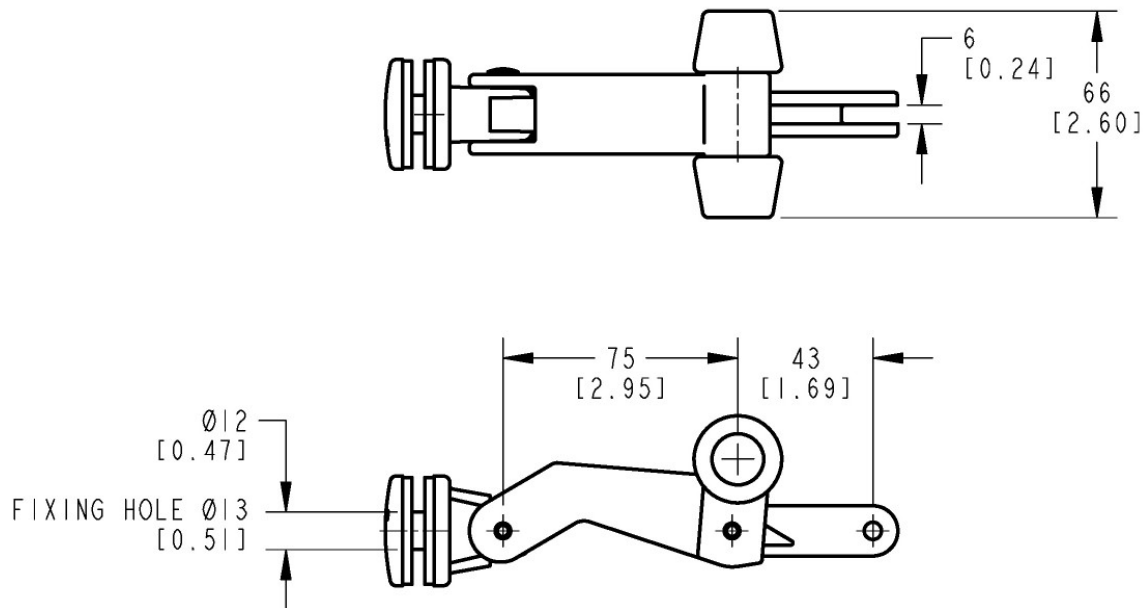
- Glass reinforced nylon
- Brass threaded insert

INSTALLATION:

- Installs through 13mm diameter hole
- Maximum opening of 135mm
- Not to exceed 6 N-m



All dimensions are for reference only. For more information visit www.trimarkcorp.com



090-7200 L-Style Over Center Window Stay

This easy to operate window hold-open is designed to fit comfortably in the hand for top and side hinged venting windows for on and off-highway vehicles. It features an over center design that orientates the window at fully closed and fully open positions and an optional quick release pin in bright red nylon or steel.



FEATURES/BENEFITS:

- Mushroom window fixings designed for 5mm or 6mm glass thickness
- Easy to install with window fixings (optional)
- Ratchet, allows for various opening positions

AVAILABLE:

- With or without quick release pin (please inquire)
- With mounting gaskets

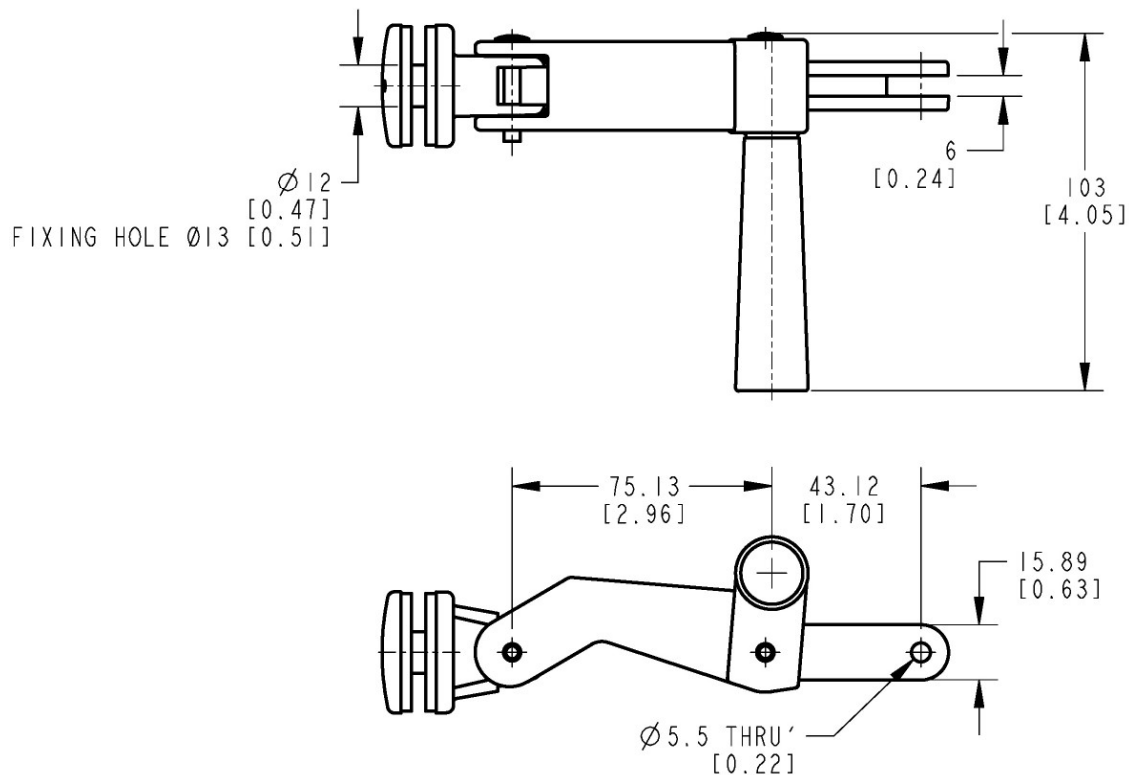
MATERIAL:

- Glass reinforced nylon - black
- Brass threaded insert

INSTALLATION:

- Installs through 13mm diameter hole
- Maximum opening of 135mm
- Mushroom fixing—not to exceed 6 N-m

All dimensions are for reference only. For more information visit www.trimarkcorp.com



130-0100 Dual Release Door Hold-Open

This product is designed for light to medium duty agricultural, construction personnel doors or any door that needs to be held in an open position. Any application where it is desirable to hold or retain a hinged door in an open position. The simple rotating knob design allows for the door to be released from the open position from either the inside of the cab or from the ground level.

FEATURES/BENEFITS:

- Simple, easy to use, rotating knob/pin latch
- Engineered to withstand vibration, shock, dust, dirt and moisture
- Ergonomic knob design
- Two stage lead in helps align the striker and receiver to compensate for door sag
- Universal design
- Rotating knob(s) allows for the door to be released from the open position from either the inside of the cab or from the ground level
- Durability in tough applications
- Easy to install
- Easily adaptable to a wide variety of door/cab configurations
- Fills a niche between the low cost "friction type" hold-opens and top end rotary and bayonet style products presently available



MATERIAL:

- Engineered plastic withstands corrosion and UV exposure and has a lower coefficient of friction, reducing closing and operation efforts
- Striker shroud is the thermoplastic rubber (TPR) to help absorb door shock loads

INSTALLATION:

- Easy to install with special thread forming screws (included)
- Flange mounting and self adhesive gaskets (included) permits through glass mounting

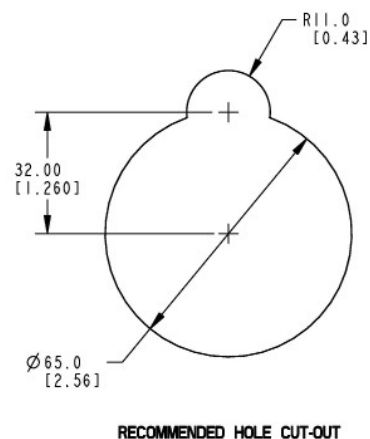
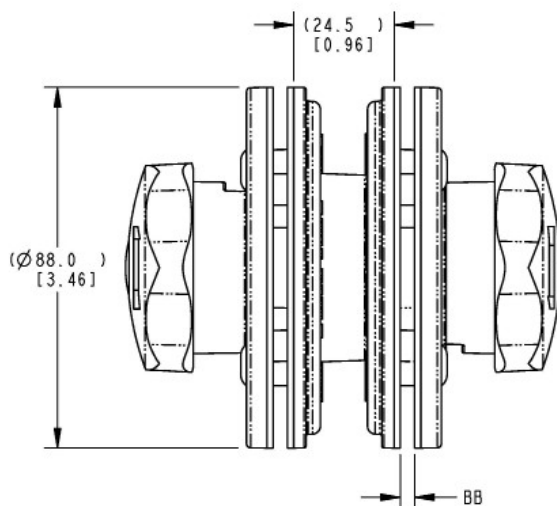
AVAILABLE:

- With gasket options to adapt to a wide range of door/cab thickness 3mm-6mm (.118-.236")

U.S. Patent No. 6,357,078

Caution: Door hold-open is not designed to secure a door in the closed position and does not comply with FMVSS 206 (ECE R11).

All dimensions are for reference only. For more information visit www.trimarkcorp.com



Latches:

Pin Type
62

130-7200 Door Hold-Open

This door hold-open is designed for light to medium duty agricultural, construction or other equipment personnel doors that need to be held in an open position. Any application where it is desirable to hold or retain a hinged door in an open position.

FEATURES/BENEFITS:

- Simple, easy to use
- Rotating knob/pin latch
- Engineered to withstand vibration, shock, dust, dirt and moisture
- Ergonomic knob design
- Rotating knob allows for the door to be released from the open position from the ground level
- Durability in tough applications
- Easily adaptable to a wide variety of door/cab configurations

AVAILABLE:

- Single release pin latch or remote release version

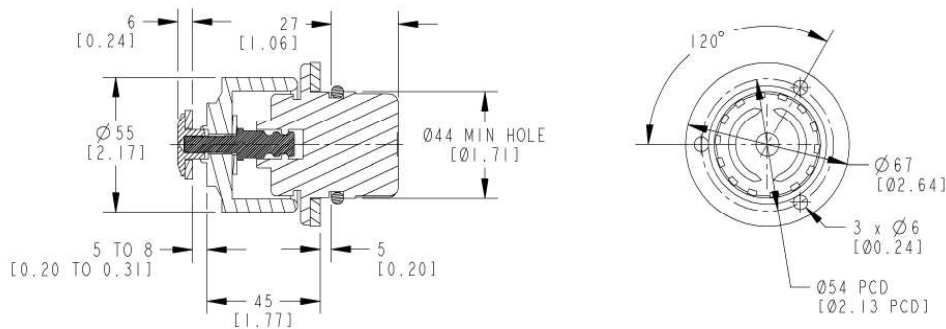
MATERIAL/FINISH:

- Glass reinforced nylon - black
- Chromed steel latching pin
- Internal components: Zinc plated steel

INSTALLATION:

- Easy to install, can be mounted on glass or steel doors
- (1) Shouldered hat nut and large rubber O-ring (included)
- Recommended mounting fastener torque on strike sub-assembly to be 6.7 to 7.9 N-m (59 to 70 in. lbs.)

Caution: Door hold-open is not designed to secure a door in the closed position and does not comply with FMVSS 206 (ECE R11).



All dimensions are for reference only. For more information visit www.trimarkcorp.com

