

010-0200 Non-Locking L-Handle

010-0300 Locking L-Handle



DESIGNED FOR:

- General purpose use for off-highway cab doors or storage, compartment and access doors for on or off-highway applications

FEATURES/BENEFITS:

- Ample finger clearance
- Easily installed with oval or flat head No. 10 fasteners (not included)
- Locking L-handle assembly provides 360° rotation and locks at 90° increments



500 Bailey Avenue
P.O. Box 350
New Hampton, Iowa 50659
United States
Tel: 641-394-3188
Fax: 641-394-2392
1-800-447-0343
www.trimarkcorp.com



TriMark Europe, Ltd.
Cedar Court
Walker Road
Bardon Hill
Coalville LE67 1TU
United Kingdom
Tel: +44 (0)1530 512460
Fax: +44 (0)1530 512461
www.trimarkeu.com



010-0200 Non-Locking L-Handle

010-0300 Locking L-Handle

AVAILABLE:

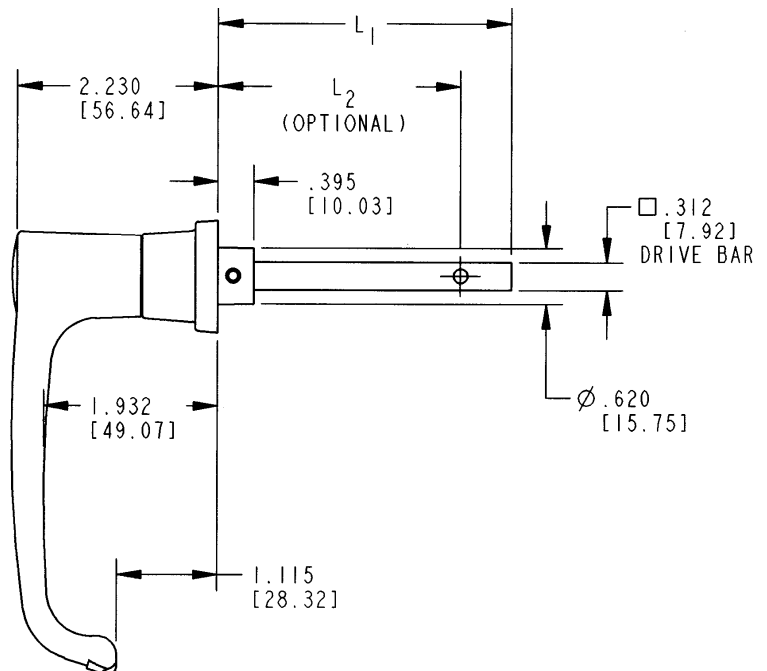
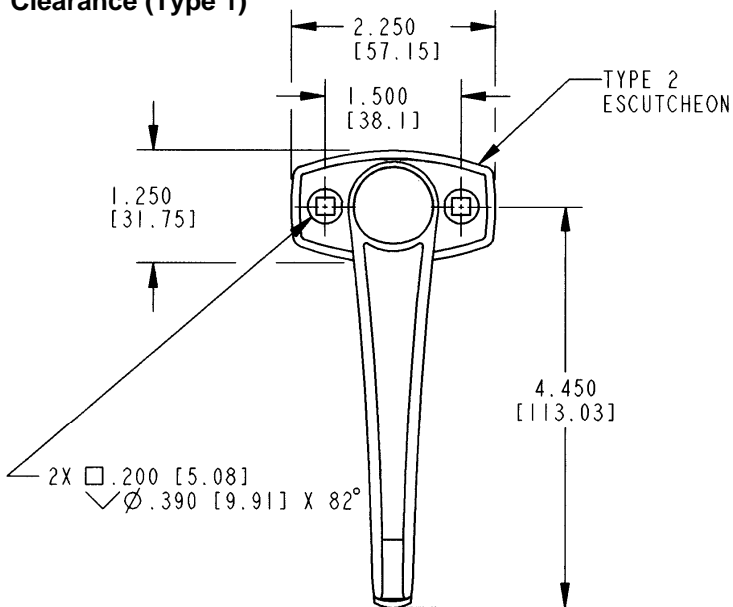
- Mounting hole patterns and escutcheons (bases) for different finger clearances
- Drive bar lengths, with or without holes or threaded rods
- Keyed CH751 and other key codes
- Drive bar attached to handle by drilling and pinning
- Locking or non-locking:
 - ◊ Standard finger clearance (Type 1 and 2)
 - ◊ Extended finger clearance (Type 4)
 - ◊ Low profile (Type 3)
- 1.50 or 1.75 mounting hole spacing

USE WITH:

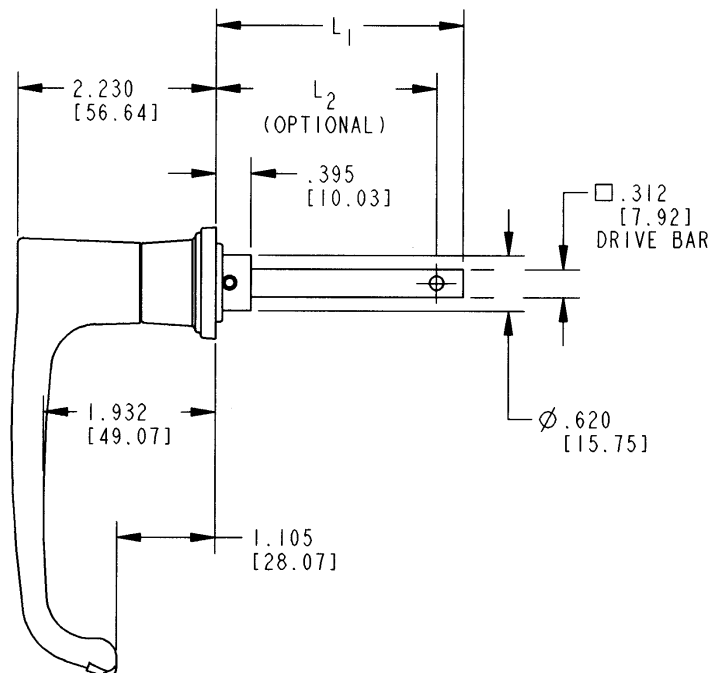
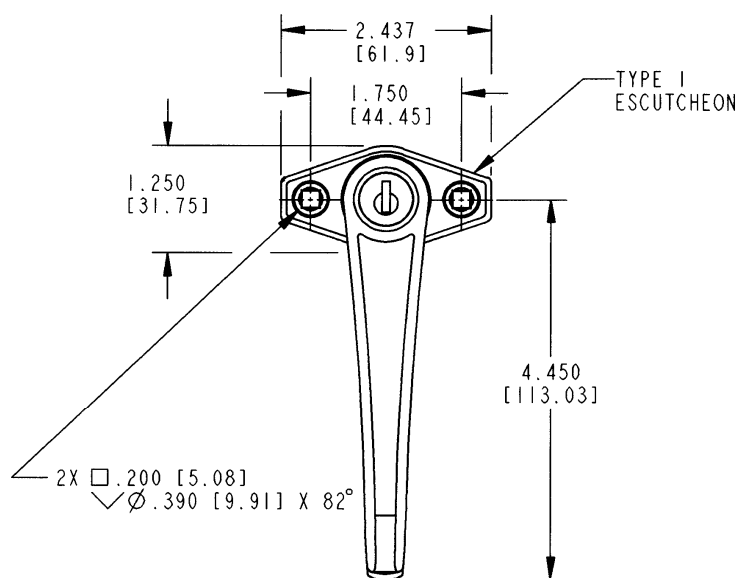
- Please refer to our website for related products that are compatible for use with this product

For more information visit
www.trimarkcorp.com

Standard Finger Clearance (Type 1)



Standard Finger Clearance (Type 2)



SPECIFY WHEN ORDERING:

- Series number
- Escutcheon type
- Drive bar length (L1) and optional hole location (L2)

FINISH:

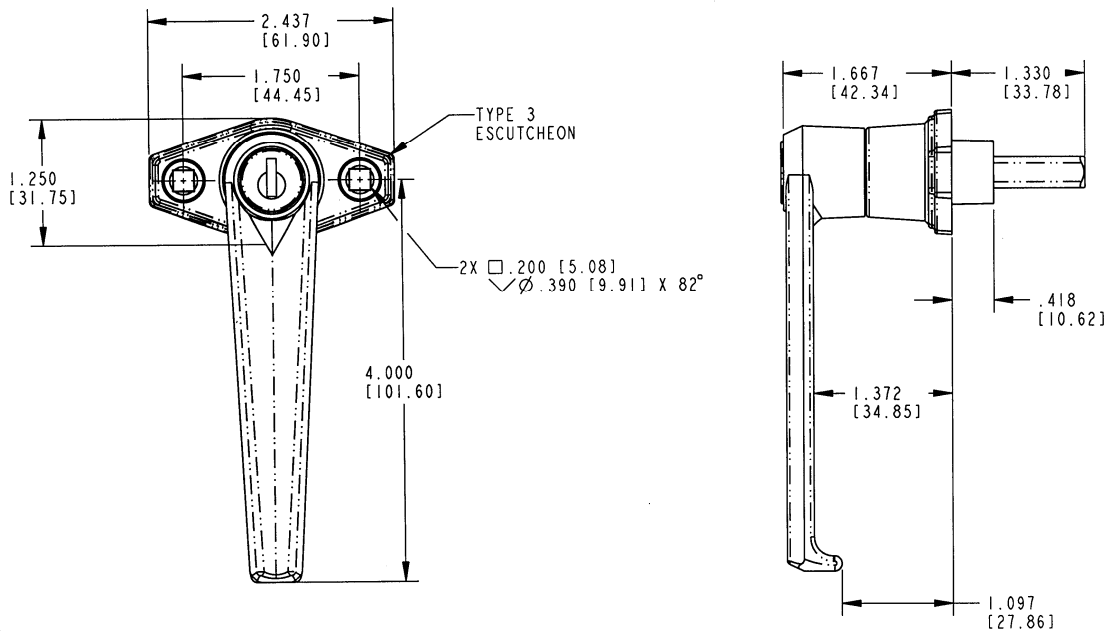
- Handle and escutcheon: copper-nickel chrome plated; or black powder coated
- Drive bar: mill finish

MATERIAL:

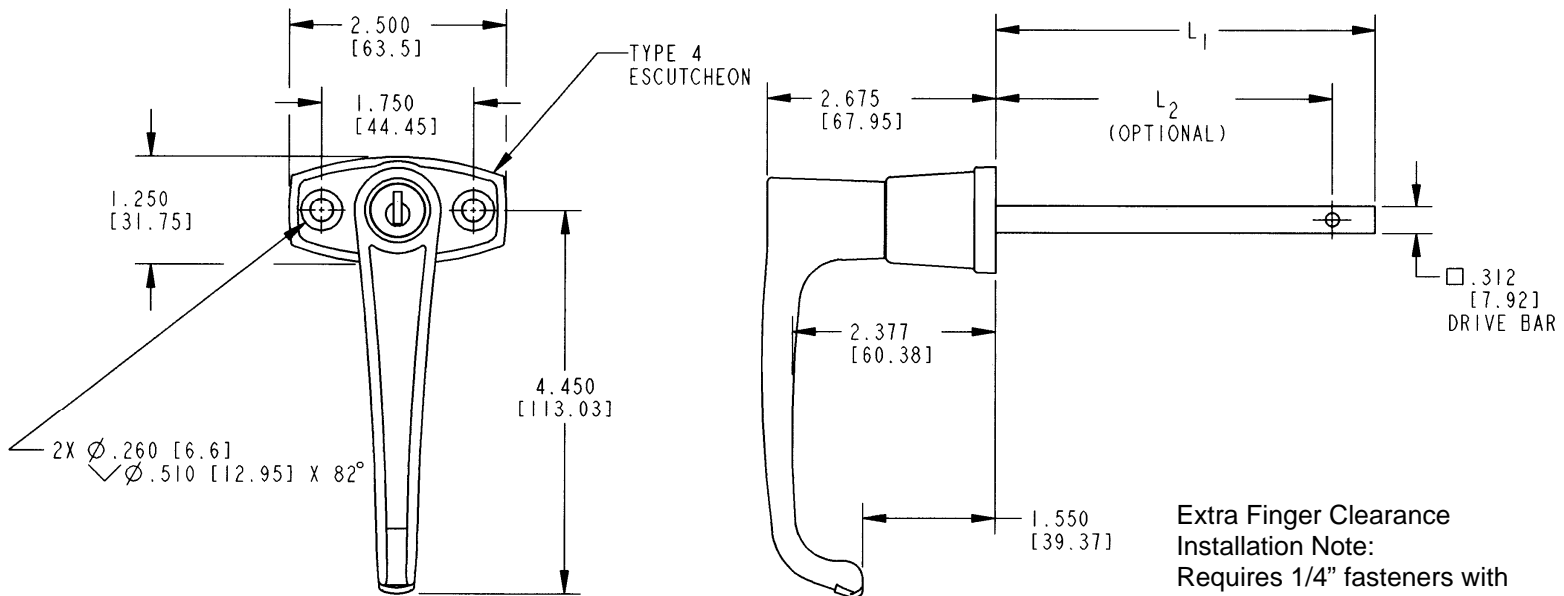
- Handle and escutcheon: die cast zinc alloy
- Drive bar: mild steel

Individual part dimensions are for reference only. Refer to individual part drawings for complete dimensions, specifications, and installation procedures. Engineering assistance and application drawings are available.

Low Profile (Type 3)



Extra Finger Clearance (Type 4)



Extra Finger Clearance
Installation Note:
Requires 1/4" fasteners with
oval or flat head (not included)