

# 130-0100 Single Release Door Hold-Open



## **DESIGNED FOR:**

- Light to medium duty agricultural, construction or other equipment personnel doors that need to be held in an open position
- The 130-0110 fixed receiver is designed for use with TriMark's 130-0100-01-XX Striker Assembly. This component provides for a lower cost solution for light to medium duty agricultural, construction or other equipment personnel doors that need to be held in an open position and where release from inside the vehicle is not a requirement

## **FEATURES/BENEFITS:**

- New shroud design provides a means to absorb shock loads and provide door release
- Revised mounting provides easier installation and alignment
- Simple, easy to use, rotating knob/pin latch
- Engineered to withstand vibration, shock, dust, dirt and moisture
- Ergonomic knob design
- Two-stage lead in helps align the striker and receiver to compensate for door sag
- Universal design
- Durability in tough applications
- Easy to install
- Easily adaptable to a wide variety of door/cab configurations
- Fills a niche between the low cost "friction type" hold-opens and top end rotary and bayonet style products presently available



500 Bailey Avenue  
P.O. Box 350  
New Hampton, Iowa 50659  
United States  
Tel: 641-394-3188  
Fax: 641-394-2392  
1-800-447-0343  
www.trimarkcorp.com



## **TriMark Europe, Ltd.**

Cedar Court  
Walker Road  
Bardon Hill  
Coalville LE67 1TU  
United Kingdom  
Tel: +44 (0)1530 512460  
Fax: +44 (0)1530 512461  
www.trimarkeu.com



# 130-0110 Single Release Door Hold-Open

## **MATERIAL:**

- Engineered plastic withstands corrosion and UV exposure and has a lower coefficient of friction, reducing closing and operating efforts

## **INSTALLATION:**

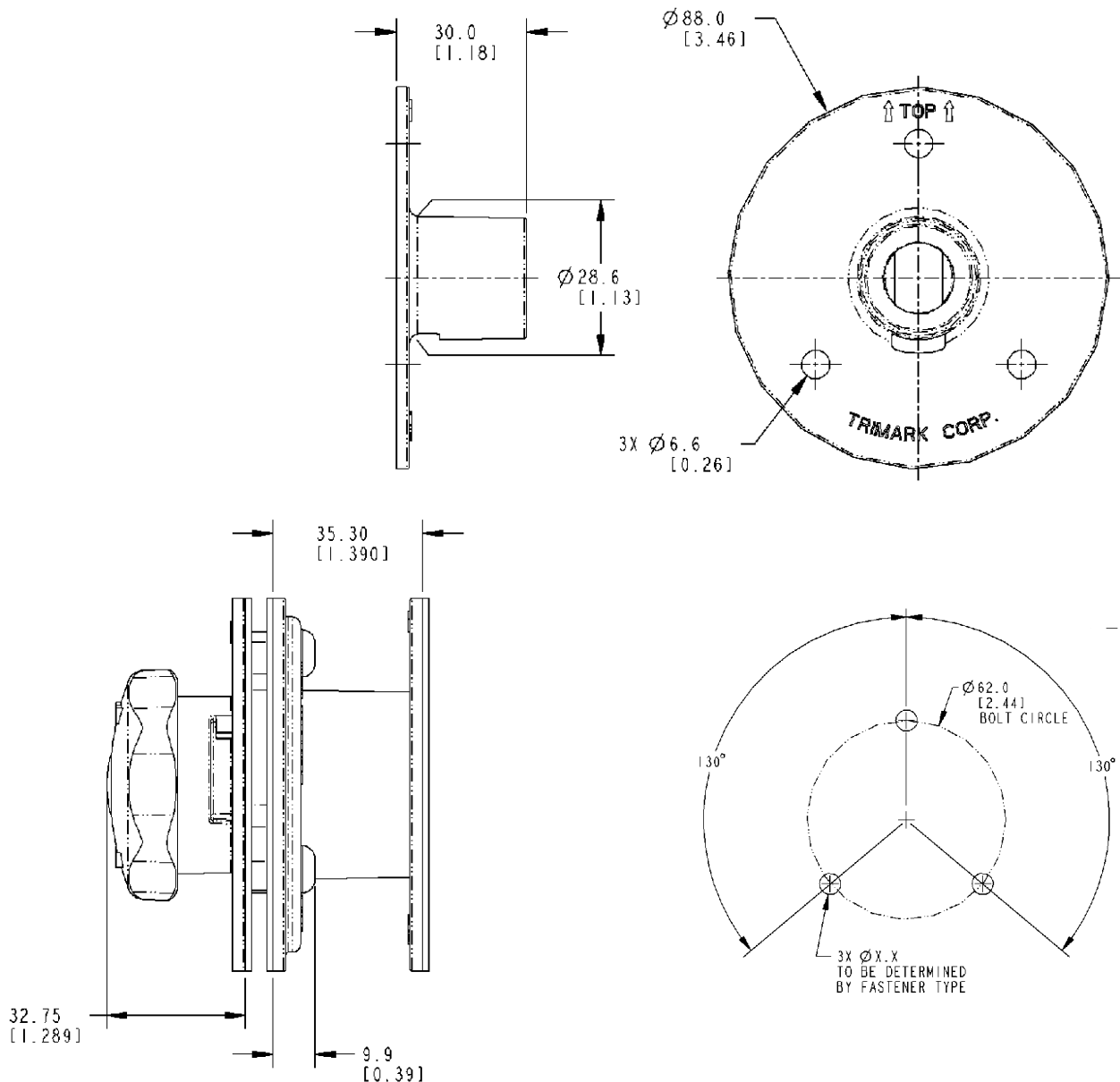
- Flange mounting and gasket (included)
- Easy to install with (3) M6 fasteners (not included)

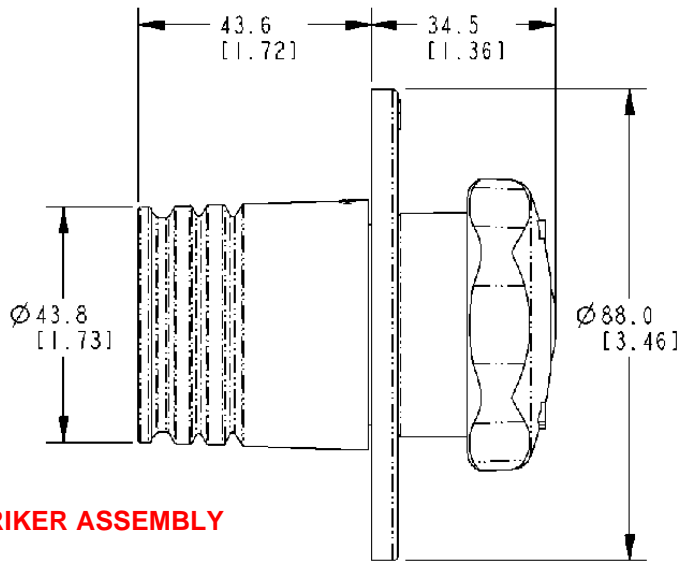
U.S. Patent No. 6,357,078

CAUTION: Door hold-open is not designed to secure a door in the closed position and does not comply with FMVSS 206

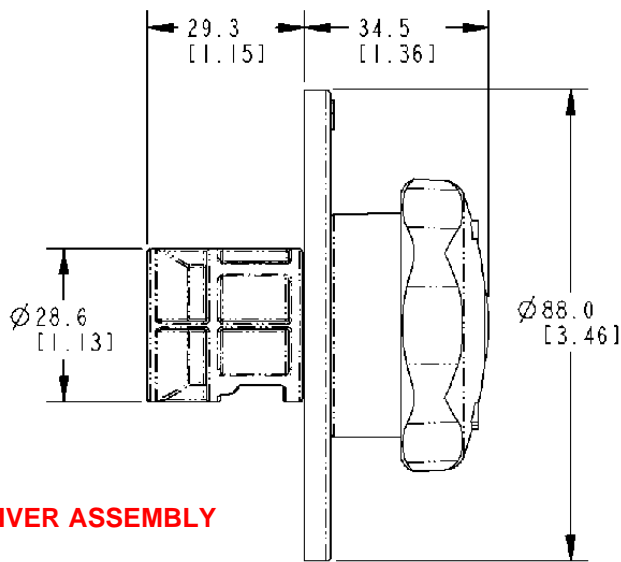
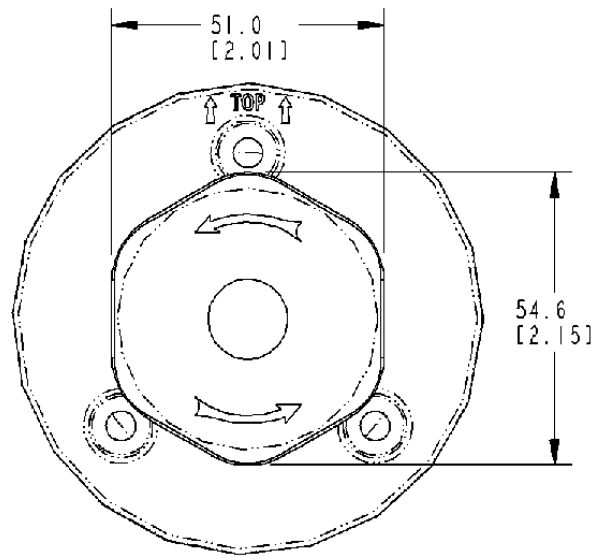
Individual part dimensions are for reference only. Refer to individual part drawings for complete dimensions, specifications, and installation procedures. Engineering assistance and application drawings are available.

For more information visit  
[www.trimarkcorp.com](http://www.trimarkcorp.com)

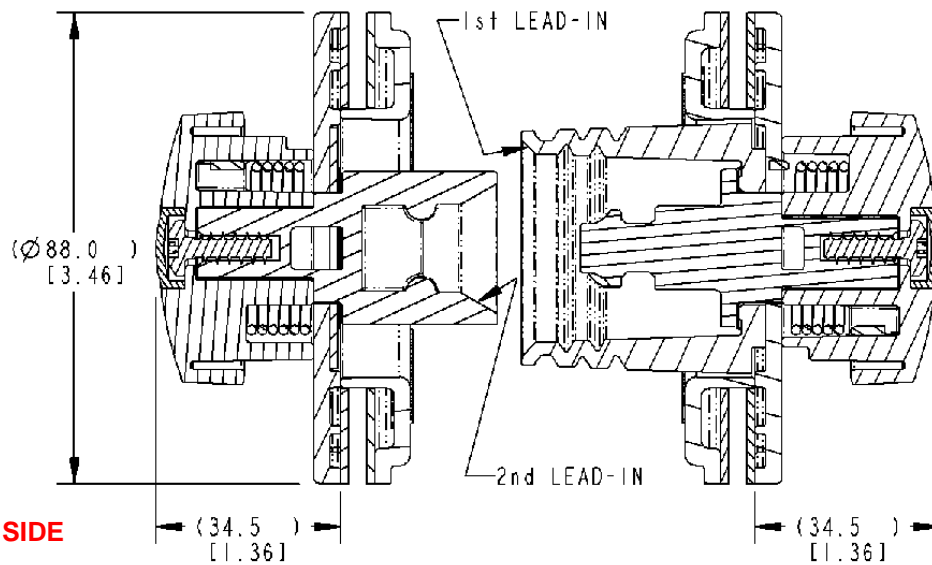
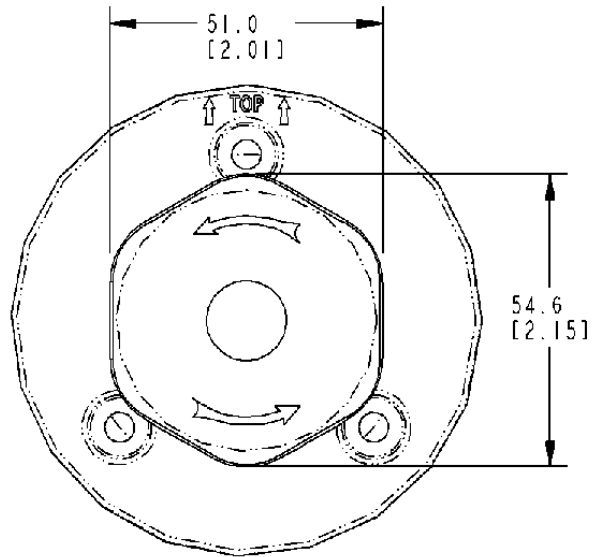




**STRIKER ASSEMBLY**



**RECEIVER ASSEMBLY**



**RECEIVER / CAB SIDE**

**STRIKER / DOOR SIDE**