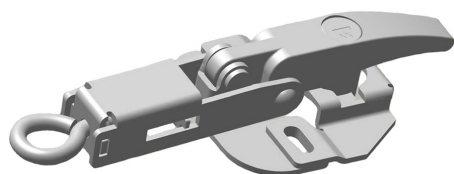


中国

**TriMark**<sup>®</sup>  
特利马克(徐州)

门禁系统之超越， 打造属于您的个性解决方案



**TriMark 80-0600X AccessX  
Compression Hook Latch**

**80-0600X 通达X 机罩锁**

This simple lever operated compress hook latch provides a secure over-center action and the spring-loaded eye-hook incorporates tension to keep panels rattle-free and secure. Design for applications where the latch and keeper are surface mounted on the same plane, folding the robust lever down pulls mating in-line panels tight. Other product details include:

该机罩锁是一个操作简单，安全可靠的过中心和加载弹簧眼钩结合，可以保持机罩安全自由开闭。使锁和手柄表面安装在同一平面，耐折叠底座与机罩配合紧密。产品其它细节如下：

- The KeyOne™ Plus locking system allows the operation of multiple onboard locking hardware with a single key or option to key differently.  
KeyOne™ Plus 锁定系统允许一把钥匙打开多个锁或者选择不同的钥匙。
- Robust construction: Welded steel housing and mounting base  
结构坚固：焊接钢板底座和锌压铸把手

System kits are available and include handles, latches and accessories to provide a comprehensive access solution. Please visit [www.trimarkcn.com](http://www.trimarkcn.com) or [trimarkcorp.com](http://trimarkcorp.com) for additional information.

系统成套配置，包括把手、锁及相关配件，提供全面的门禁解决方案。请访问 [www.trimarkcn.com](http://www.trimarkcn.com) or [trimarkcorp.com](http://trimarkcorp.com) 获取更多信息。

**TriMark(Xuzhou) Automotive Components Co., LTD**  
Standard Factory Building A5  
Jingwu Road, Xuzhou Economic Development Zone  
Xuzhou, Jiangsu, 221004 PR China

Tele: +86 516 8793 6120  
Fax: +86 516 8773 0058  
Http://www.trimarkcn.com  
E-Mail: sales@trimarkcn.com